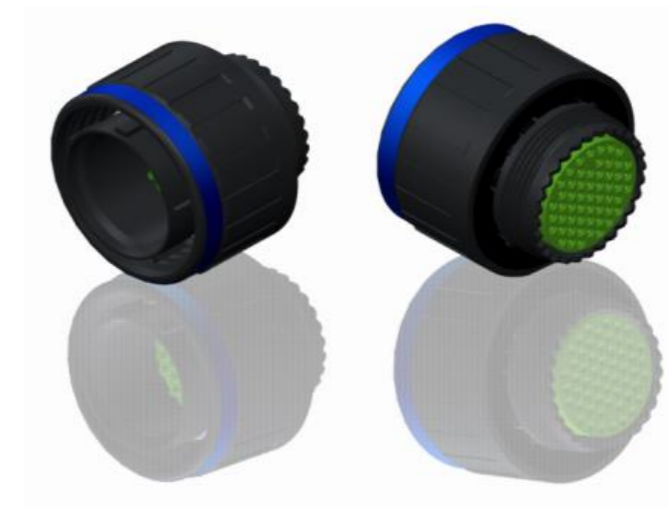


H G F E D C B A



LAYOUT SHOWN AS EXAMPLE

Keying Shown as example

**CHARACTERISTICS**

- Standard : Based on MIL-DTL-38999 Series III
- Shell Material : Composite
- Shell Plating : Without Plating
- Insulator : Thermoplastic
- Contacts : Copper Alloy
- Seals & Grommet : Silicon Elastomer
- Contact Plating : Gold over copper Alloy 0.8µm minimum
- Durability : 500 Mating cycles
- Delivered without Souriau contacts
- Temperature Range : -65°C to +175°C
- Salt Spray : 2000 hours

| Connector dimension |          |
|---------------------|----------|
| Dim                 | Nominal  |
| ØS                  | 44.9 Max |
| Z                   | 31 Max   |
| VV THREAD           | M34x1-6g |

SOURIAU shall not be liable for any non-conformity or damage due to a use of the Products which does not comply with the Specifications issued by either of the Parties or by a third party (professional recommendation, technical notice.)

|         |                             |
|---------|-----------------------------|
| Country | Jurisdiction & Control List |
| FR      | Not Listed                  |

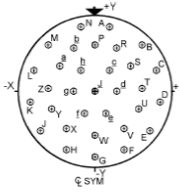
**PN: 8D523X32PBL**

|                                                                                                       |                                     |                                |                               |
|-------------------------------------------------------------------------------------------------------|-------------------------------------|--------------------------------|-------------------------------|
| A                                                                                                     | 07-10-2016                          | First Release                  |                               |
| ISS                                                                                                   | DATE                                | Latest modification - by       | MOD N°                        |
| Designed By:                                                                                          |                                     | Date:                          | <b>CUSTOMER DRAWING</b>       |
| <b>TITLE</b>                                                                                          |                                     | Composite Plug 8D series       |                               |
| SCALE                                                                                                 | NA                                  | General linear Tolerances: ±-- | NPRDS / PROJECT<br><b>859</b> |
| <b>SOURIAU</b>                                                                                        |                                     | WWW.SOURIAU.COM                |                               |
| This document is the property of SOURIAU it must not be reproduced or communicated without permission |                                     |                                |                               |
| FORMAT                                                                                                | <b>SOURIAU DRG N° 8D523X32PBL-C</b> |                                | SHEET<br>1/2                  |

|                |                         |   |   |    |                                 |    |   |   |   |                        |
|----------------|-------------------------|---|---|----|---------------------------------|----|---|---|---|------------------------|
| BASIC SERIES:  | 8D                      | 5 | - | 23 | X                               | 32 | P | B | L | Delivered W/O Contacts |
| SHELL TYPE :   | Plug with RFI Shielding |   |   |    | ORIENTATION : B                 |    |   |   |   |                        |
| CONTACT TYPE : | Standard Crimp Contact  |   |   |    | CONTACT TYPE : PIN(500 Matings) |    |   |   |   |                        |
| SHELL SIZE :   | 23                      |   |   |    | CONTACT LAYOUT : 23-32          |    |   |   |   |                        |
| PLATING :      | X = Without Plating     |   |   |    |                                 |    |   |   |   |                        |

H G F E D C B A

Contact Layout



| Contacts<br>(Insert arrangement 23-32) |              |              |                     |             |             |
|----------------------------------------|--------------|--------------|---------------------|-------------|-------------|
| Contact position ID                    | Location     |              | Contact position ID | Location    |             |
|                                        | X-axis (mm)  | Y-axis (mm)  |                     | X-axis (mm) | Y-axis (mm) |
| A                                      | +100 (2.54)  | +450 (11.43) | T                   | +325 (8.26) | +025 (0.64) |
| B                                      | +325 (8.26)  | +325 (8.26)  | U                   | +300 (7.62) | -125 (3.18) |
| C                                      | +425 (10.80) | +150 (3.81)  | V                   | +200 (5.08) | -250 (6.35) |
| D                                      | +450 (11.43) | -075 (1.91)  | W                   | +000 (0.00) | -300 (7.62) |
| E                                      | -375 (9.53)  | -275 (6.99)  | X                   | -200 (5.08) | -260 (6.35) |
| F                                      | +200 (5.08)  | -400 (10.16) | Y                   | -300 (7.62) | -125 (3.18) |
| G                                      | +000 (0.00)  | -450 (11.43) | Z                   | -325 (8.26) | +025 (0.64) |
| H                                      | -200 (5.08)  | -400 (10.16) | a                   | -250 (6.35) | +175 (4.45) |
| J                                      | -375 (9.53)  | -275 (6.99)  | b                   | -150 (3.81) | +300 (7.62) |
| K                                      | -450 (11.43) | -075 (1.91)  | c                   | +100 (2.54) | +150 (3.81) |
| L                                      | -425 (10.80) | +150 (3.81)  | d                   | +150 (3.81) | +000 (0.00) |
| M                                      | -325 (8.26)  | +325 (8.26)  | e                   | +075 (1.91) | -150 (3.81) |
| N                                      | -100 (2.54)  | +450 (11.43) | f                   | -075 (1.91) | -150 (3.81) |
| P                                      | +000 (0.00)  | +325 (8.26)  | g                   | -150 (3.81) | +000 (0.00) |
| R                                      | +150 (3.81)  | +300 (7.62)  | h                   | -100 (2.54) | +150 (3.81) |
| S                                      | +250 (6.35)  | +175 (4.45)  | j                   | +000 (0.00) | +000 (0.00) |

| Shell size | Arrangement no. | Number of contacts | Size contacts | Service rating | Contact location | Supersedes |
|------------|-----------------|--------------------|---------------|----------------|------------------|------------|
| 23         | -32             | 32                 | 20            | I              | All              | MS20056-32 |

SOURIAU shall not be liable for any non-conformity or damage due to a use of the Products which does not comply with the Specifications issued by either of the Parties or by a third party (professional recommendation, technical notice.)

| Country | Jurisdiction & Control List |
|---------|-----------------------------|
| FR      | Not Listed                  |

PN: 8D523X32PBL

|                |                                     |                            |                                                                                                       |
|----------------|-------------------------------------|----------------------------|-------------------------------------------------------------------------------------------------------|
| A              | 07-10-2016                          | First Release              |                                                                                                       |
| ISS            | DATE                                | Latest modification - by   | MOD N°                                                                                                |
| Designed By:   |                                     | Date:                      | <b>CUSTOMER DRAWING</b>                                                                               |
| <b>TITLE</b>   | <b>Composite Plug 8D series</b>     |                            |                                                                                                       |
| SCALE          |                                     | General linear Tolerances: | NPRDS / PROJECT                                                                                       |
| NA             |                                     | ±--                        | <b>859</b>                                                                                            |
| <b>SOURIAU</b> | <b>WWW.SOURIAU.COM</b>              |                            | This document is the property of SOURIAU it must not be reproduced or communicated without permission |
| FORMAT         | <b>SOURIAU DRG N° 8D523X32PBL-C</b> |                            | SHEET 2/2                                                                                             |