

NOTES:

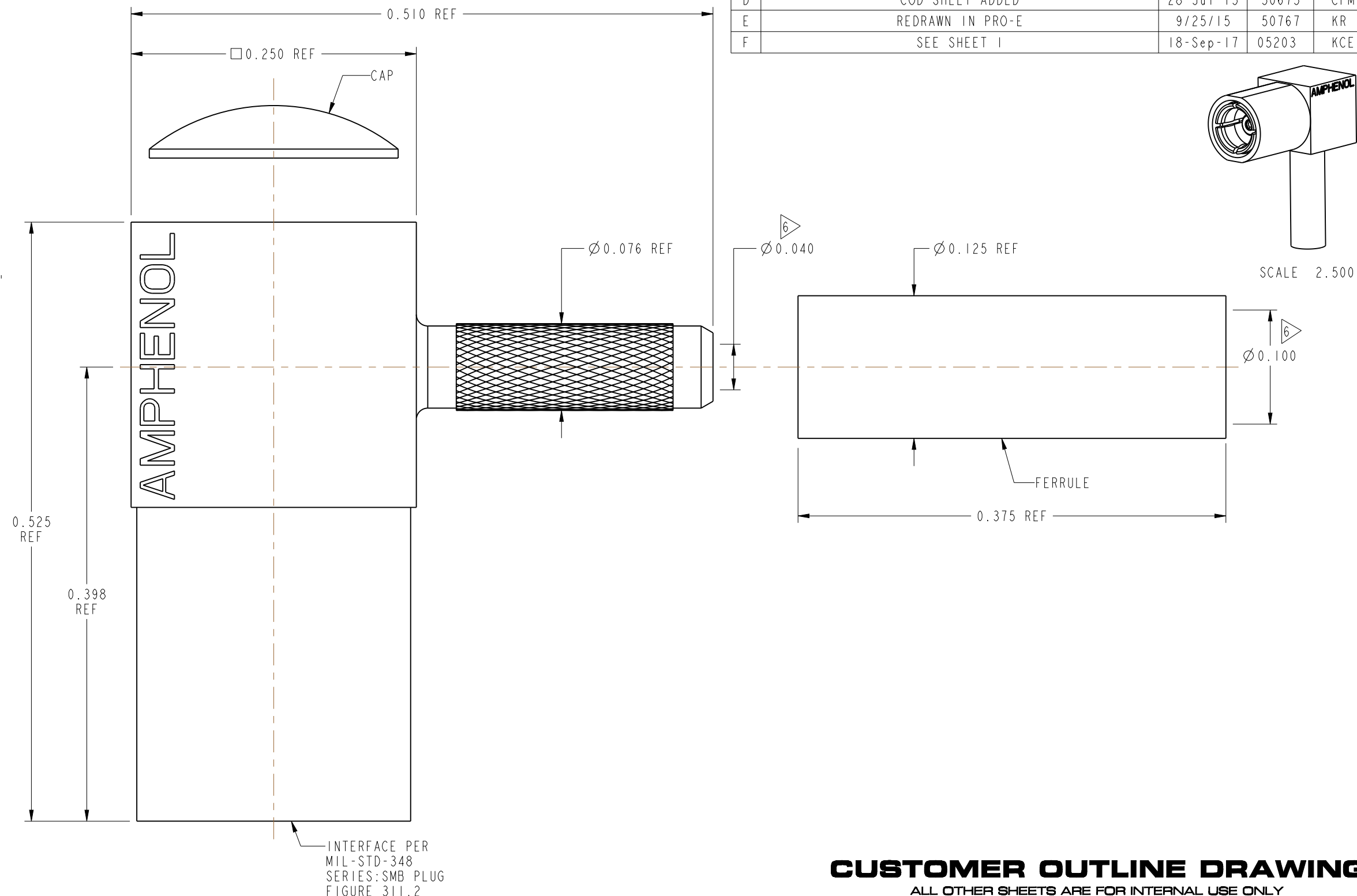
1. MATERIALS AND FINISHES:  
 CUBE BODY- ZINC DIE CAST, GOLD PLATING  
 BODY & CAP - BRASS, GOLD PLATING  
 CONTACT - BeCu, GOLD PLATING  
 RETAINING RING - BeCu, NICKEL PLATING  
 INSULATOR - PTFE, NATURAL  
 FERRULE - COPPER, GOLD PLATING
2. FOR ASSEMBLY INSTRUCTIONS SEE AMPHENOL SPEC, 349-50521, SHEET 3.
3. ELECTRICAL:  
 A. IMPEDANCE: 50 OHM
4. MECHANICAL:  
 A. DURABILITY: 500 CYCLES MIN.  
 B. TEMPERATURE RANGE: -65° C TO +165° C
5. PACKAGING:  
 A. QUANTITY: SINGLE PACK  
 B. MARKING: BAG TO BE MARKED "AMPHENOL RF, 903-291P-51A1, AND DATE CODE"

6 SHOWS CABLE ENTRY DIMENSIONS.

THIRD ANGLE PROJ.

REVISIONS

REV	DESCRIPTION	DATE	ECO	APPR
A	RELEASE TO MFG.	13-Jun-94	39999	PB
D	COD SHEET ADDED	28-Jul-15	50675	CPM
E	REDRAWN IN PRO-E	9/25/15	50767	KR
F	SEE SHEET 1	18-Sep-17	05203	KCE



**CUSTOMER OUTLINE DRAWING**  
 ALL OTHER SHEETS ARE FOR INTERNAL USE ONLY

UNLESS OTHERWISE SPECIFIED, DIMENSIONS ARE IN INCHES AND TOLERANCES ARE: 2 PLACE DECIMAL 3 PLACE DECIMAL ANGLES $\pm 0.015$ (0,381 mm) $\pm 0.005$ (0,127 mm) $\pm 1^\circ$	MATERIAL	DRAWN	DATE	TITLE 50 OHM SMB RA PLUG FOR RG-196/U CABLE		Amphenol RF www.amphenolrf.com	
	SEE NOTES	KARTHIK R	11-Sep-15				
NOTICE - These drawings, specifications, or other data (1) are, and remain the property of Amphenol corp. (2) must be returned upon request; and (3) are confidential and not to be disclosed to any person other than those to whom they are given by Amphenol Corp. the furnishing of these drawings, specifications, or other data by Amphenol Corp., or to any other person to anyone for any purpose is not to be regarded by implication or otherwise in any manner licensing, granting rights to permitting such holder or any other person to manufacture, use or sell any product, process or design, patented or otherwise, that may in any way be related to or disclosed by said drawings, specifications, or other data.	REFERENCE	ENGINEER	DATE	SCALE: 10.3:1.0 SHEET 2 OF 2		DRAWING NO.903-291P-51A1 ITEM NO.903-291P-51A1	
	EAR 111-964117	RAV	11-Jun-94				
	CONFIGURATION LEVEL: In Work	APPROVED	DATE		DWG SIZE	REV	PART NO.903-291P-51A1
FINISH	RAV	11-Jun-94		B	F		