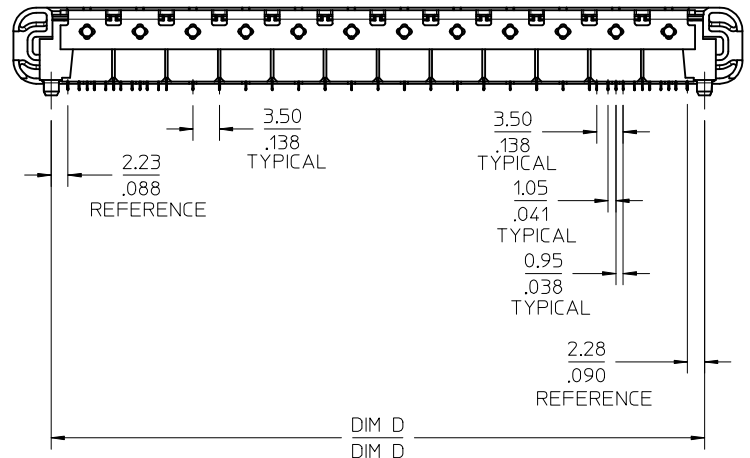
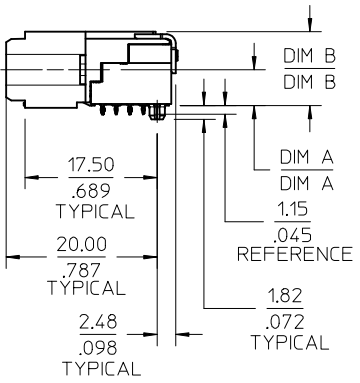


- NOTES:
- 1) MATERIALS:
HOUSING - LIQUID CRYSTAL POLYMER, UL94 V-0
WAFER DIELECTRIC - LIQUID CRYSTAL POLYMER, UL94 V-0
CONTACT - COPPER ALLOY
 - 2) FINISHES: SEE SHEET 2
 - 3) PRODUCT SPECIFICATION: THIS PART CONFORMS TO MOLEX SPECIFICATION PS-7.
 - 4) PACKAGING SPECIFICATION: THIS PART TO BE PACKAGED PER SPECIFICATION PK-75020-030.
 - 5) APPLICATION SPECIFICATION: THIS PART TO BE APPLIED PER SPECIFICATION PS-75018-001. APPLICATION TOOL AND INSTRUCTIONS PER AS-75018-001.
 - 6) MATING INFORMATION
THIS PART MATES WITH 74149-XXXX.
WILL MATE WITH MAXIMUM 1.27mm MIS-ALIGNMENT.
WILL MATE WITH MAXIMUM 0.5° MIS-ALIGNMENT.
 - 7) FOR CIRCUIT DESIGNATION SEE SHEET 3
 - 8) FOR PCB INFORMATION SEE SHEET 3
 - 9) CIRCUITS IN THIS ZONE HAVE BEEN OMITTED TO SIMPLIFY THE MODEL. ACTUAL PRODUCT IS FULLY LOADED WITH TERMINALS.
 - 10) APPLICATION TOOLING KEEP OUT AREA. NO COMPONENTS ALLOWED IN THIS AREA.
 - 11) CONFORMS TO MOLEX COSMETIC SPECIFICATION PS-45499-002 AND PS-45499-003.
 - 12) MARKING: PART NUMBER, MX, DDDY
 - 13) RECOMMENDED DRILL SIZE 0.48±0.03 TO YIELD FINISHED PLATED THROUGH HOLE OF 0.39±0.05



PROPOSAL IEC NO: UCP2012-0751 DRAWN BY: MS IBARRA 2011/12/12 CHECKED BY: SDANNELLEY 2011/12/12 APPR: SMILLER 2012/01/23	DESCRIPTION HS DOCK+ FIXED CONNECTOR	QUALITY SYMBOLS	GENERAL TOLERANCES (UNLESS SPECIFIED)	DIMENSION STYLE	SCALE	DESIGN UNITS	THIRD ANGLE PROJECTION
		$\nabla = 0$ $\nabla = 0$ $\nabla = 0$	mm INCH 4 PLACES ± --- ± --- 3 PLACES ± --- ± .005 2 PLACES ± 0.13 ± .01 1 PLACE ± 0.25 ± --- ANGULAR ± 1/2°	MM/IN	2:1	METRIC	
		DRAFT WHERE APPLICABLE MUST REMAIN WITHIN DIMENSIONS	DRAWN BY: MS IBARRA 2010/09/28 CHECKED BY: SDANNELLEY 2010/09/28 APPROVED BY: SMILLER 2012/01/23 MATERIAL NO. SEE TABLE	TITLE HS DOCK+ FIXED CONNECTOR	DOCUMENT NO. SD-74148-0000	SHEET NO. 1 OF 4	
		SIZE 	THIS DRAWING CONTAINS INFORMATION THAT IS PROPRIETARY TO MOLEX INCORPORATED AND SHOULD NOT BE USED WITHOUT WRITTEN PERMISSION				

LEADED ASSEMBLIES

ITEM NUMBER	CIRCUIT SIZE	NO. OF COLUMNS 'N'	CENTERLINE DIMENSION 'A' mm(in)	O/A HEIGHT DIMENSION 'B' mm(in)	O/A LENGTH DIMENSION 'C' mm(in)	PEG TO PEG DIMENSION 'D' mm(in)	FIRST-LAST SIGNAL DIMENSION 'E' mm(in)	FIRST-LAST GROUND DIMENSION 'F' mm(in)	PLATING FINISH	HOUSING FINISH
74148-0001	144	48	4.74 (.187)	9.78 (.385)	96.50 (3.799)	86.51 (3.406)	82.00 (3.228)	77.00 (3.031)	OPTION 1	NICKEL
74148-0002	108	36	4.74 (.187)	9.78 (.385)	75.50 (2.972)	65.51 (2.579)	61.00 (2.402)	56.00 (2.205)	OPTION 1	NICKEL
74148-2001	144	48	4.74 (.187)	9.78 (.385)	96.50 (3.799)	86.51 (3.406)	82.00 (3.228)	77.00 (3.031)	OPTION 3	GOLD
74148-2002	108	36	4.74 (.187)	9.78 (.385)	75.50 (2.972)	65.51 (2.579)	61.00 (2.402)	56.00 (2.205)	OPTION 3	GOLD

LEAD FREE ASSEMBLIES

ITEM NUMBER	CIRCUIT SIZE	NO. OF COLUMNS 'N'	CENTERLINE DIMENSION 'A' mm(in)	O/A HEIGHT DIMENSION 'B' mm(in)	O/A LENGTH DIMENSION 'C' mm(in)	PEG TO PEG DIMENSION 'D' mm(in)	FIRST-LAST SIGNAL DIMENSION 'E' mm(in)	FIRST-LAST GROUND DIMENSION 'F' mm(in)	PLATING FINISH	HOUSING FINISH
74148-1001	144	48	4.74 (.187)	9.78 (.385)	96.50 (3.799)	86.51 (3.406)	82.00 (3.228)	77.00 (3.031)	OPTION 2	NICKEL
74148-1002	108	36	4.74 (.187)	9.78 (.385)	75.50 (2.972)	65.51 (2.579)	61.00 (2.402)	56.00 (2.205)	OPTION 2	NICKEL
74148-3001	144	48	4.74 (.187)	9.78 (.385)	96.50 (3.799)	86.51 (3.406)	82.00 (3.228)	77.00 (3.031)	OPTION 4	GOLD
74148-3002	108	36	4.74 (.187)	9.78 (.385)	75.50 (2.972)	65.51 (2.579)	61.00 (2.402)	56.00 (2.205)	OPTION 4	GOLD

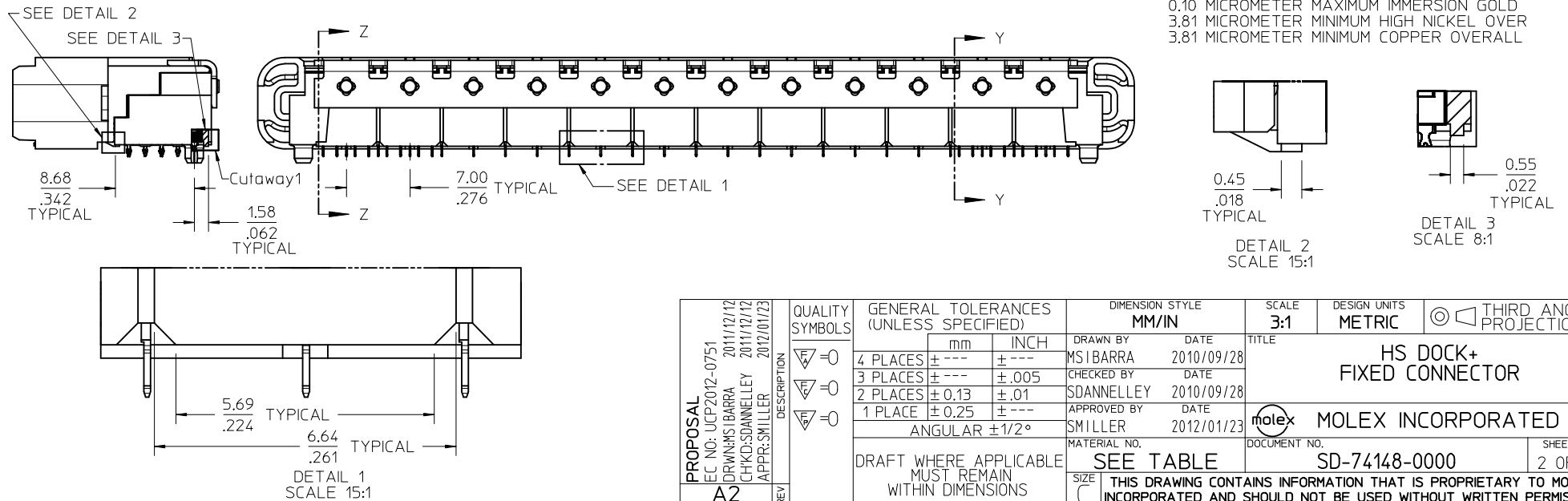
FINISHES:

OPTION 1
 CONTACT INTERFACE
 0.76 MICROMETER MINIMUM SELECT GOLD
 1.27 MICROMETER MINIMUM NICKEL OVERALL
 COMPLIANT INTERFACE
 0.76 MICROMETER MINIMUM SELECT TIN-LEAD OVER
 1.27 MICROMETER MINIMUM NICKEL OVERALL
 HOUSING
 3.81 MICROMETER MINIMUM HIGH PHOS NICKEL OVER
 3.81 MICROMETER MINIMUM COPPER OVERALL

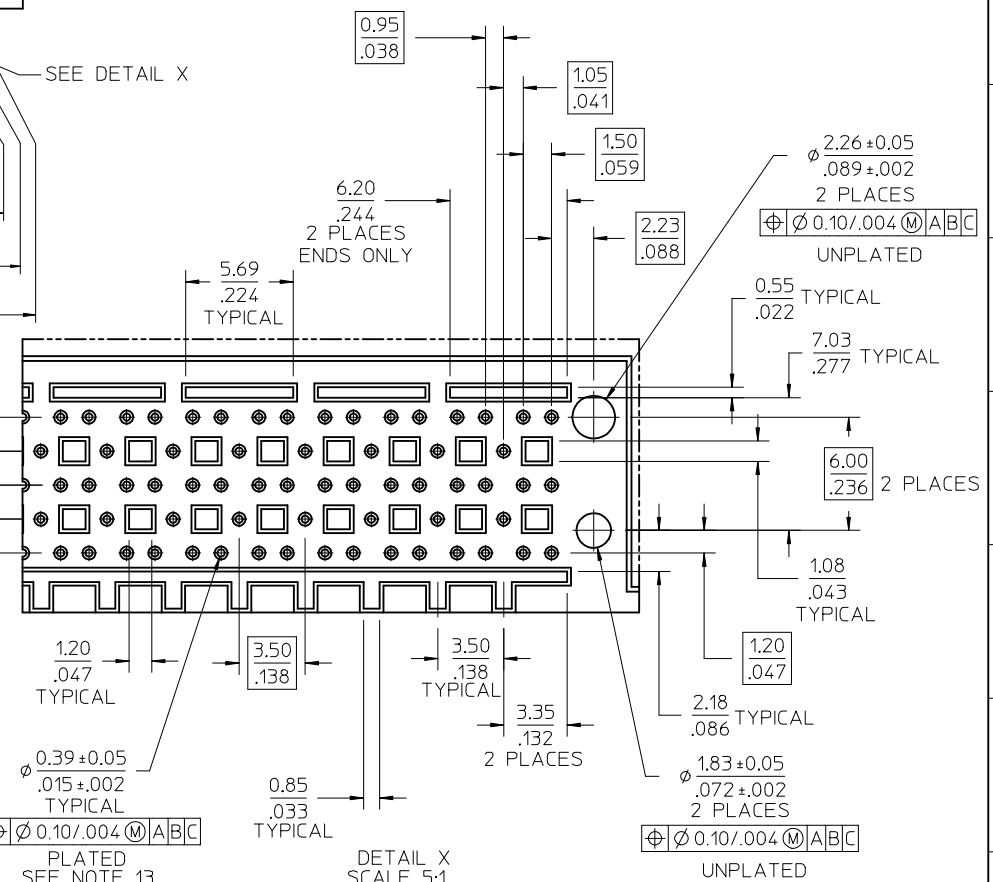
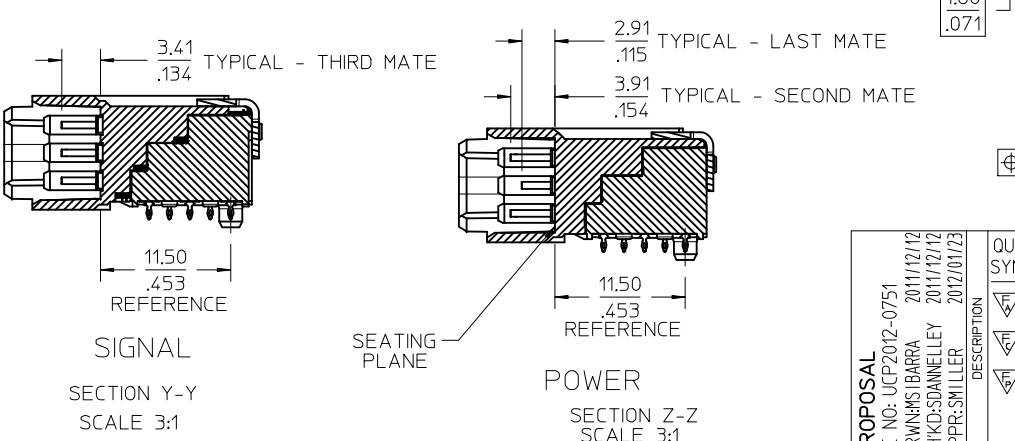
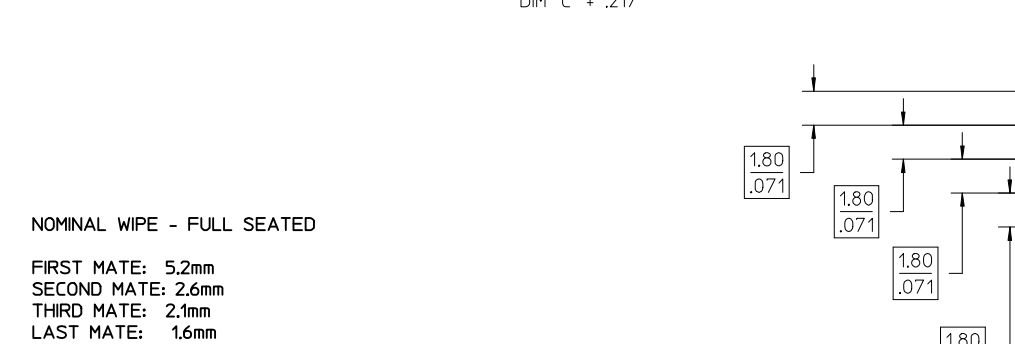
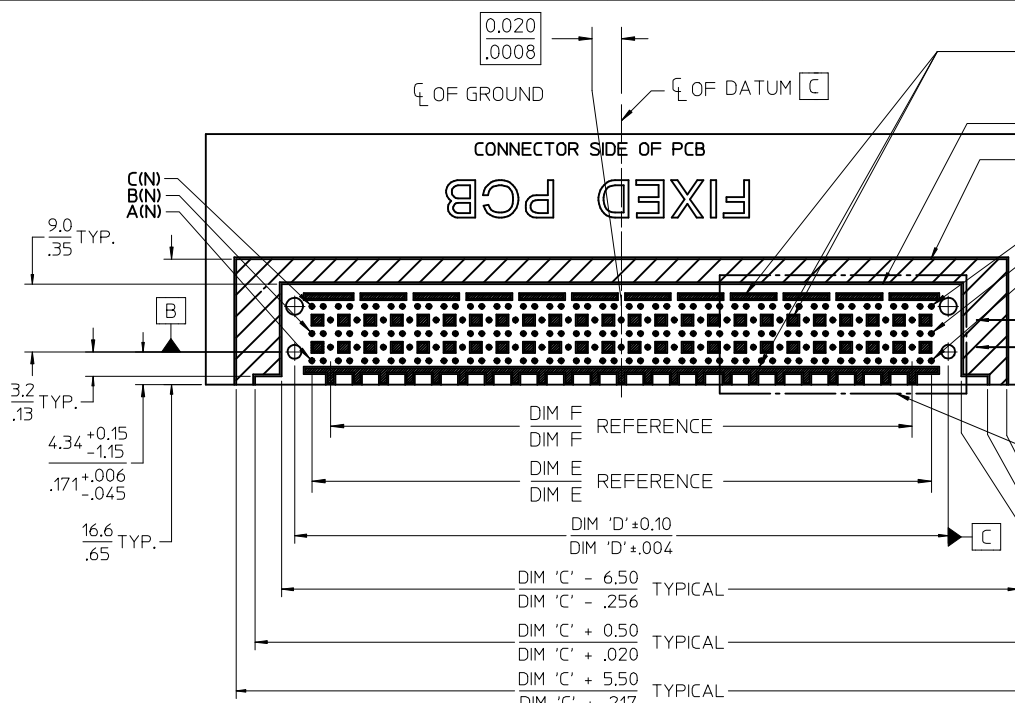
OPTION 2
 CONTACT INTERFACE
 0.76 MICROMETER MINIMUM SELECT GOLD
 1.27 MICROMETER MINIMUM NICKEL OVERALL
 COMPLIANT INTERFACE
 0.76 MICROMETER MINIMUM SELECT TIN OVER
 1.27 MICROMETER MINIMUM NICKEL OVERALL
 HOUSING
 3.81 MICROMETER MINIMUM HIGH PHOS NICKEL OVER
 3.81 MICROMETER MINIMUM COPPER OVERALL

OPTION 3
 CONTACT INTERFACE
 0.76 MICROMETER MINIMUM SELECT GOLD
 1.27 MICROMETER MINIMUM NICKEL OVERALL
 COMPLIANT INTERFACE
 0.76 MICROMETER MINIMUM SELECT TIN-LEAD OVER
 1.27 MICROMETER MINIMUM NICKEL OVERALL
 HOUSING
 0.10 MICROMETER MAXIMUM IMMERSION GOLD
 3.81 MICROMETER MINIMUM NICKEL OVER
 3.81 MICROMETER MINIMUM COPPER OVERALL

OPTION 4
 CONTACT INTERFACE
 0.76 MICROMETER MINIMUM SELECT GOLD
 1.27 MICROMETER MINIMUM NICKEL OVERALL
 COMPLIANT INTERFACE
 0.76 MICROMETER MINIMUM SELECT TIN OVER
 1.27 MICROMETER MINIMUM NICKEL OVERALL
 HOUSING
 0.10 MICROMETER MAXIMUM IMMERSION GOLD
 3.81 MICROMETER MINIMUM HIGH NICKEL OVER
 3.81 MICROMETER MINIMUM COPPER OVERALL



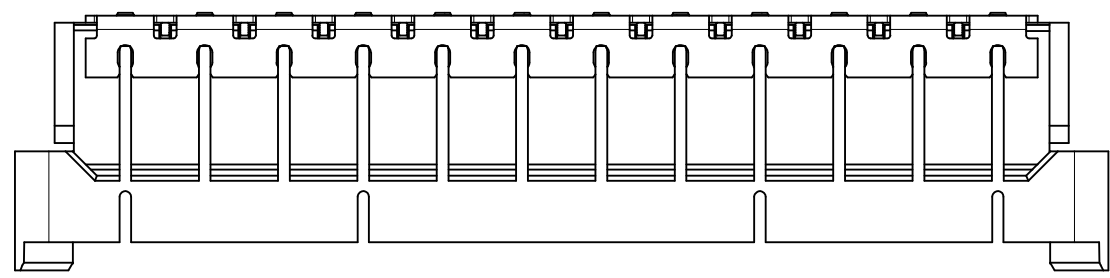
PROPOSAL EC NO: UCP2012-0751 DRWN:MSIBARRA 2011/12/12 CHKD:SDANNELLEY 2011/12/12 APPR:SMILLER 2012/01/23	QUALITY SYMBOLS ∇=0 ∇=0 ∇=0	GENERAL TOLERANCES (UNLESS SPECIFIED)		DIMENSION STYLE MM/IN		SCALE 3:1	DESIGN UNITS METRIC	THIRD ANGLE PROJECTION			
		4 PLACES ± --- ± --- 3 PLACES ± --- ± .005 2 PLACES ± 0.13 ± .01 1 PLACE ± 0.25 ± --- ANGULAR ± 1/2°	mm INCH	DRAWN BY MSIBARRA	DATE 2010/09/28	TITLE HS DOCK+ FIXED CONNECTOR					
		DRAFT WHERE APPLICABLE MUST REMAIN WITHIN DIMENSIONS		APPROVED BY SMILLER	DATE 2012/01/23	MOLEX INCORPORATED					
		SEE TABLE		MATERIAL NO. SD-74148-0000	DOCUMENT NO.	SHEET NO. 2 OF 4					



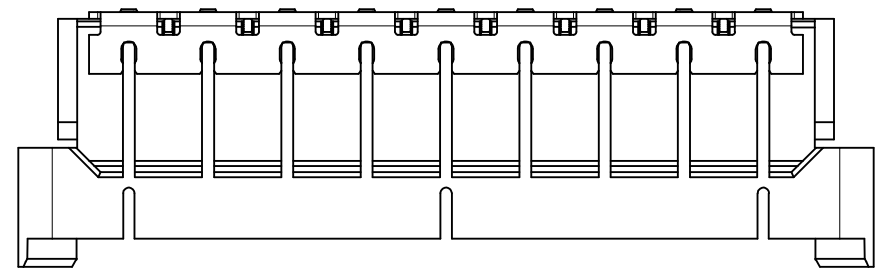
PROPOSAL EC NO: UCP2012-0751 DRAWN BY: DRWINHIS BARRA 2011/12/12 CHECKED BY: CHKD-SDANNELLEY 2011/12/12 APPR: SMILLER 2012/01/23	QUALITY SYMBOLS ▽=0 ▽=0 ▽=0	GENERAL TOLERANCES (UNLESS SPECIFIED)		DIMENSION STYLE MM/IN		SCALE 2:1	DESIGN UNITS METRIC	THIRD ANGLE PROJECTION	
		4 PLACES ± --- ± --- 3 PLACES ± --- ± .005 2 PLACES ± 0.13 ± .01 1 PLACE ± 0.25 ± ---		DRAWN BY: MSIBARRA 2010/09/28 CHECKED BY: SDANNELLEY 2010/09/28 APPROVED BY: SMILLER 2012/01/23		TITLE HS DOCK+ FIXED CONNECTOR	MATERIAL NO. SD-74148-0000		
DRAFT WHERE APPLICABLE MUST REMAIN WITHIN DIMENSIONS		SEE TABLE		SHEET NO. 3 OF 4		THIS DRAWING CONTAINS INFORMATION THAT IS PROPRIETARY TO MOLEX INCORPORATED AND SHOULD NOT BE USED WITHOUT WRITTEN PERMISSION			

HOUSING SHROUD SLOT CONFIGURATION

144 CIRCUIT



108 CIRCUIT



PROPOSAL EC NO: UCP2012-0751 DRWN:MSIBARRA 2011/12/12 CHKD:SDANNELLEY 2011/12/12 APPR:SMILLER 2012/01/23	QUALITY SYMBOLS ▽=0 ▽=0 ▽=0	GENERAL TOLERANCES (UNLESS SPECIFIED)		DIMENSION STYLE MM/IN	SCALE 3:1	DESIGN UNITS METRIC	THIRD ANGLE PROJECTION	
		4 PLACES ± --- ± ---	DRAWN BY MSIBARRA	DATE 2010/09/28	TITLE HS DOCK+ FIXED CONNECTOR			
		3 PLACES ± --- ± .005	CHECKED BY SDANNELLEY	DATE 2010/09/28				
		2 PLACES ± 0.13 ± .01	APPROVED BY SMILLER		DATE 2012/01/23	MATERIAL NO. SEE TABLE		
1 PLACE ± 0.25 ± ---	ANGULAR ± 1/2°		DOCUMENT NO. SD-74148-0000	SHEET NO. 4 OF 4				
A2	DRAFT WHERE APPLICABLE MUST REMAIN WITHIN DIMENSIONS	SIZE C		THIS DRAWING CONTAINS INFORMATION THAT IS PROPRIETARY TO MOLEX INCORPORATED AND SHOULD NOT BE USED WITHOUT WRITTEN PERMISSION				