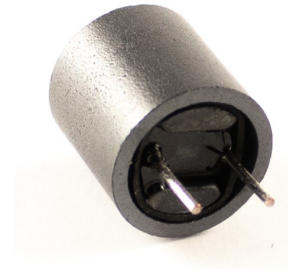
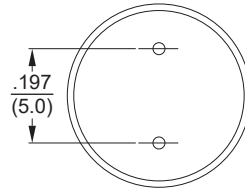
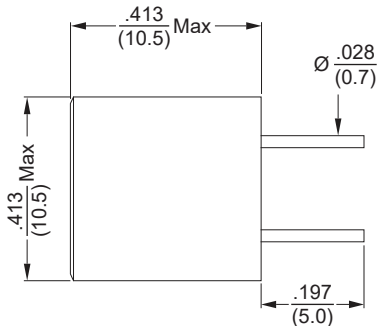




Dimensions:  $\frac{\text{inch}}{\text{mm}}$



Allied Part Number	Inductance (mH)	Tolerance (±%)*	Q Min.	Q Test Freq (KHz)	SRF Min. (MHz)	DCR Max (Ω)	IDC (mA)
RBS181-102_	1.0	J,K	70	50	0.77	3.4	90
RBS181-122_	1.2	J,K	70	50	0.70	3.7	75
RBS181-152_	1.5	J,K	70	50	0.64	4.0	70
RBS181-182_	1.8	J,K	70	50	0.57	4.5	65
RBS181-222_	2.2	J,K	70	50	0.51	5.2	60
RBS181-272_	2.7	J,K	70	50	0.48	5.8	55
RBS181-332_	3.3	J,K	100	50	0.44	6.1	50
RBS181-392_	3.9	J,K	100	50	0.41	7.2	45
RBS181-472_	4.7	J,K	100	50	0.38	7.5	40
RBS181-562_	5.6	J,K	100	50	0.35	8.4	40
RBS181-682_	6.8	J,K	100	50	0.32	9.7	35
RBS181-822_	8.2	J,K	100	50	0.28	10.4	30
RBS181-103_	10	J,K	100	50	0.25	12.1	25
RBS181-123_	12	J,K	100	50	0.22	13.0	25
RBS181-153_	15	J,K	100	50	0.22	15.0	20
RBS181-183_	18	J,K	100	50	0.19	17.0	22
RBS181-223_	22	J,K	100	50	0.19	19.5	21
RBS181-273_	27	J,K	100	50	0.16	22.0	18
RBS181-333_	33	J,K	100	50	0.16	26.0	17
RBS181-363_	36	J,K	100	50	0.14	27.0	16
RBS181-393_	39	J,K	100	50	0.12	45.0	15
RBS181-473_	47	J,K	100	50	0.12	52.0	13
RBS181-563_	56	J,K	100	50	0.12	58.0	12
RBS181-683_	68	J,K	100	50	0.09	67.0	11
RBS181-823_	82	J,K	100	50	0.09	71.0	10
RBS181-104_	100	J,K	100	50	0.09	82.0	9
RBS181-124_	120	J,K	100	50	0.08	97.0	8

\*Insert letter at the end of the part number for desired tolerance J=5%, K=10%  
All specifications subject to change without notice

### Features

- For R.F. and other applications
- Magnetically Shielded Construction
- Extensive Inductance Range
- RoHS Compliance

### Electrical

**Inductance Range:** 1.0mH - 120mH  
**Tolerance:** \*Available in 5% and 10% as indicated  
**Test Frequency:** (L) @1KHZ, Q @ 50KHZ  
**Operating Temperature:** -55°C to +105°C  
**Rated Current:** The current at which the inductance will decrease by no more than 10% from initial value without current

### Test Equipment

**Inductance:** HP4342A & HP4284A  
**DCR:** CH-301 Current Source & DCR Meter  
**Current:** CH-301 Current Source & DCR Meter

### Physical

**Packaging:** 400/Tray  
**Marking:** EIA Inductance code