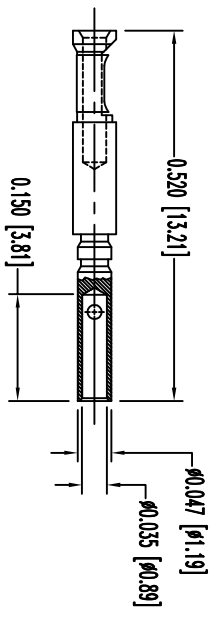
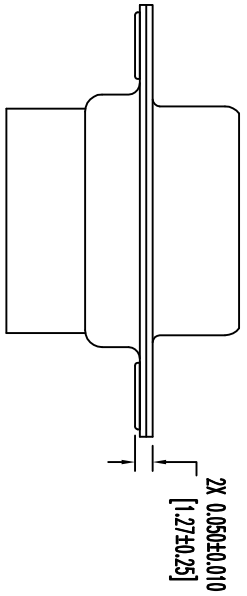
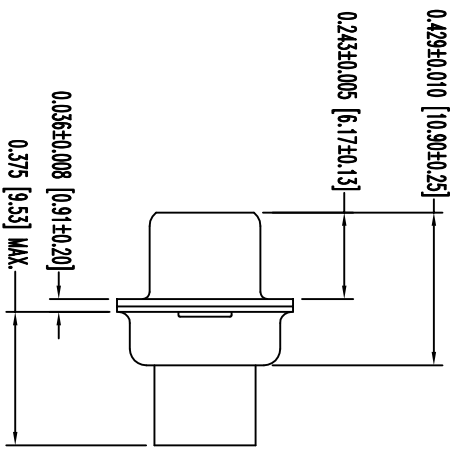
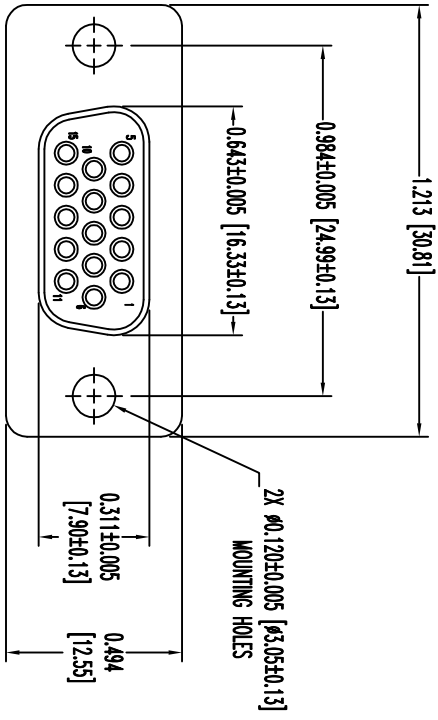


THIS DRAWING CONTAINS INFORMATION PROPRIETARY TO POSTRONIC AND ITS SUBSIDIARIES. POSTRONIC BELIEVES THE DATA ON THIS DRAWING TO BE RELIABLE. SINCE THE USER EMPLOYERS SUCH INFORMATION AT HIS OWN DISCRETION AND RISK. POSTRONIC ASSUMES NO RESPONSIBILITY FOR RESULTS OBTAINED OR DAMAGES INCURRED FROM USE OF SUCH INFORMATION UNLESS OTHERWISE STATED ON DRAWING.

DD15S10000/AA

DATE	REV	REVISION	RECORD	APP	DR	CK
02-20-19	A	ECO	65195	RK	SM	ND



15X FEMALE CONTACT
ENLARGED

NOTES:

1. MATERIALS AND FINISHES:
INSULATOR: GLASS FILLED POLYESTER PER ASTM D5927, UL 94V-0, COLOR: BLUE.
CONTACTS: PRECISION MACHINED COPPER ALLOY, GOLD FLASH OVER NICKEL PLATE.
SHELLS: STEEL, ZINC PLATE WITH CHROMATE SEAL.
2. DETAILED PRODUCT, MECHANICAL AND ELECTRICAL INFORMATION IS AVAILABLE IN THE LATEST HIGH DENSITY D-SUB PRODUCT PUBLICATION AT CONNECTPOSTRONIC.COM.
3. CONNECTORS ARE COMPLIANT TO THE CURRENT ROHS DIRECTIVE.
4. DIMENSIONS ARE IN INCHES [MILLIMETERS].



POSTRONIC INDUSTRIES INC.
SPRINGFIELD, MISSOURI 65801

DECIMAL TOL.	± 0.015 [0.38]	ANGULAR TOL.	± 5°
TITLE	DD15S10000/AA	DATE	02-20-19
SERIES	DD	DRAWING NUMBER	DD15S10000/AA
SCALE	N.T.S.	DATE	02-20-19
DRAWN BY	SAGAR M.	REV.	A
APPROVED BY	RK		