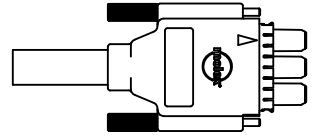
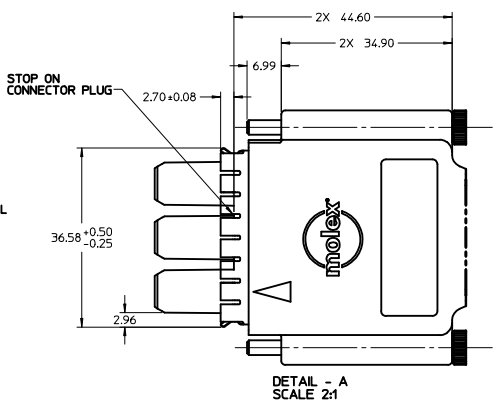
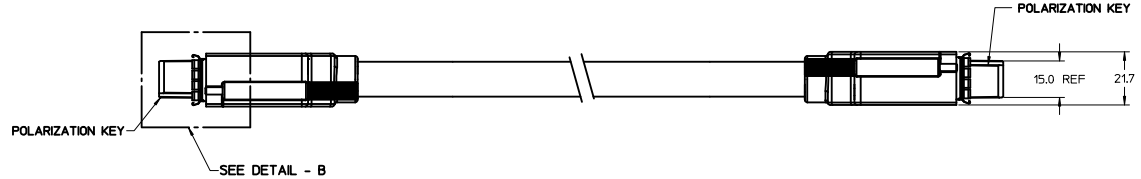
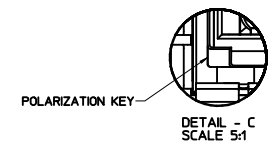
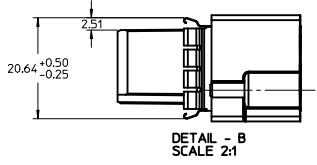


MATING VIEW OF P1  
SCALE 2:1



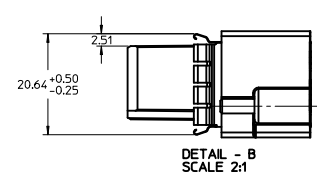
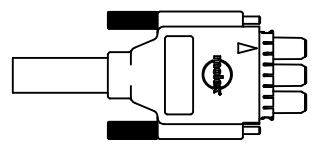
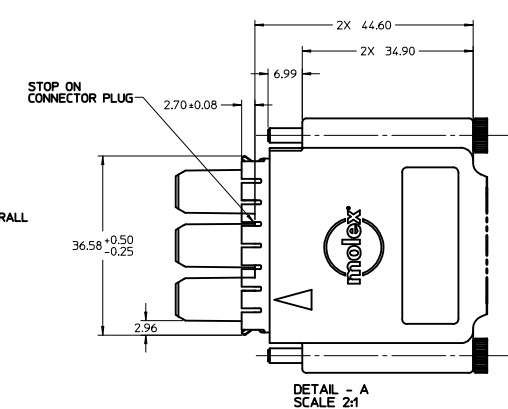
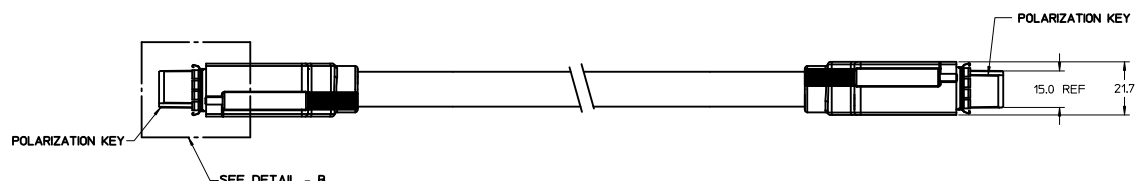
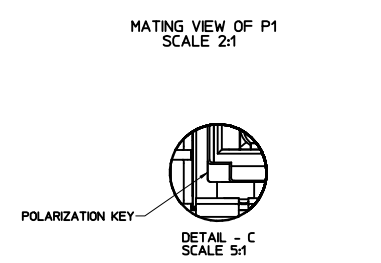
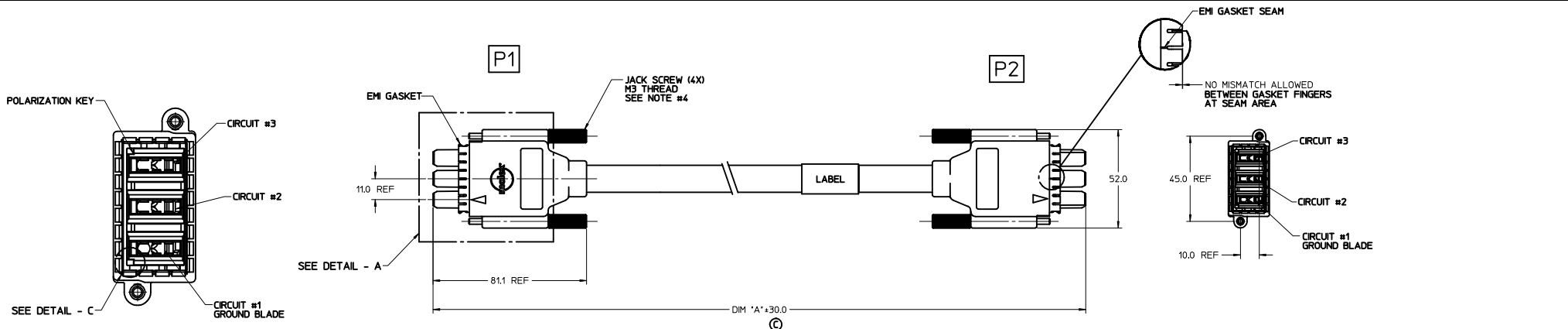
- NOTES**
- MATERIAL:**  
 3 CKT HSG - PBT (UL 94V-0)  
 TERMINAL - COPPER ALLOY  
 PLATING: 30µm GOLD IN CONTACT AREA AND 100µm TIN OVER 50µm NICKEL OVERALL  
 TPA - PBT (UL 94V-0)  
 OVER-MOLD - PP RTP 154 UL94V-0  
 EMI GASKET - 0.127 THK COPPER ALLOY  
 PLATING: NICKEL PLATED (127-3.81 µm)  
 JACK SCREW - STAINLESS 303  
 PREMOLD - TEO RTP 2899 X 121388 UL94V-0  
 COPPER TAPE  
 BLOCKER - TEO RTP 2899 X 121388 UL94V-0  
 PLUGGING LOCATION LABEL -  
 WRAP LABEL -  
 CABLE - UL RECOGNIZED AWM STYLE 2570  
 (2) 8 AWG POWER TIN PLATED COPPER - HYTREL INSULATION  
 (1) 10 AWG DRAIN - BARE COPPER  
 SHIELD - 34 AWG TIN PLATED COPPER  
 JACKET - XPBT BLACK
  - CABLE MATES TO PLUG SERIES 46817
  - THUMB SCREW AND OVER-MOLD REQUIREMENTS:  
 THUMB SCREW MUST WITHSTAND A MINIMUM EXTRACTION FORCE OF 15kg (3.3 POUNDS)
  - STRAIN RELIEF MUST CONTAIN JACKET AND WITHSTAND A MINIMUM PULL FORCE OF 22 LBS IN ANY DIRECTION.
  - FINAL ASSEMBLY TO BE HI-POT TESTED  
 - FROM POS #2 & #3  
 - TO POS #1 (GND)  
 - PRIMARIES TO GROUND/SHIELD  
 - VOLTAGE: 1500 VRMS/2121 VDC
  - PRODUCT SPECIFICATION: TBD
  - THIS PRODUCT MEETS THE RESTRICTION OF HAZARDOUS SUBSTANCES IN ELECTRICAL AND ELECTRONIC EQUIPMENT RoHS DIRECTIVE (2002/95/EC)

MOLEX P/N	DIM - 'A'	DESCRIPTION
11119-1000	1000	



<b>CHANGED DIM A</b> EC NO: CPG2012-0602 DRAWN BY: CHYD:REVES CHECKED BY: APPR:KMONROE DATE: 2011/02/20 DATE: 2012/02/07	QUALITY SYMBOLS ▽=0 ▽=0	GENERAL TOLERANCES (UNLESS SPECIFIED)		DIMENSION STYLE MM ONLY		SCALE 1:1	DESIGN UNITS METRIC	THIRD ANGLE PROJECTION
		4 PLACES ±--- INCH 3 PLACES ±--- INCH 2 PLACES ±0.18 INCH 1 PLACE ±0.3 INCH	4 PLACES ±--- MM 3 PLACES ±--- MM 2 PLACES ±0.18 MM 1 PLACE ±0.3 MM	DRAWN BY: JREEVES DATE: 2010/05/18 CHECKED BY: JREEVES DATE: 2010/05/18 APPROVED BY: KMONROE DATE: 2010/07/19	TITLE POWER CABLE ASSY 3 CKTS WITH EMI GASKET		MOLEX INCORPORATED	
DRAFT WHERE APPLICABLE MUST REMAIN WITHIN DIMENSIONS		MATERIAL NO. SEE CHART		DOCUMENT NO. SD-11119-001		SHEET NO. 1 OF 1		

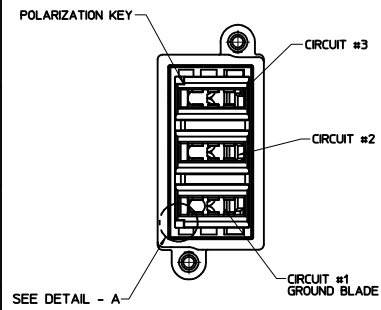
THIS DRAWING CONTAINS INFORMATION THAT IS PROPRIETARY TO MOLEX INCORPORATED AND SHOULD NOT BE USED WITHOUT WRITTEN PERMISSION



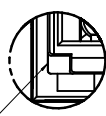
- NOTES**
- MATERIAL:**
    - 3 CKT HSG - PBT (UL 94V-0)
    - TERMINAL - COPPER ALLOY
    - PLATING: 30µm GOLD IN CONTACT AREA AND 100µm TIN OVER 50µm NICKEL OVERALL
    - TPA - PBT (UL 94V-0)
    - OVER-MOLD - PP RTP 154 UL94V-0
    - EMI GASKET - 0.127 THK COPPER ALLOY
    - PLATING: NICKEL PLATED (127-3.81 µm)
    - JACK SCREW - STAINLESS 303
    - PREMOLD - TEO RTP 2899 X 121388 UL94V-0
    - COPPER TAPE
    - BLOCKER - TEO RTP 2899 X 121388 UL94V-0
    - PLUGGING LOCATION LABEL - WRAP LABEL
    - CABLE - UL RECOGNIZED AWM STYLE 2570
    - (2) 8 AWG POWER TIN PLATED COPPER - HYTREL INSULATION
    - (1) 10 AWG DRAIN - BARE COPPER
    - SHIELD - 34 AWG TIN PLATED COPPER
    - JACKET - XPBT BLACK
  - CABLE MATES TO PLUG SERIES 46817
  - THUMB SCREW AND OVER-MOLD REQUIREMENTS:  
THUMB SCREW MUST WITHSTAND A MINIMUM EXTRACTION FORCE OF 15kg (3.3 POUNDS)
  - STRAIN RELIEF MUST CONTAIN JACKET AND WITHSTAND A MINIMUM PULL FORCE OF 22 LBS IN ANY DIRECTION.
  - FINAL ASSEMBLY TO BE HI-POT TESTED
    - FROM POS #2 & #3
    - TO POS #1 (GND)
    - PRIMARIES TO GROUND/SHIELD
    - VOLTAGE: 1500 VRMS/2121 VDC
  - PRODUCT SPECIFICATION: TBD
  - THIS PRODUCT MEETS THE RESTRICTION OF HAZARDOUS SUBSTANCES IN ELECTRICAL AND ELECTRONIC EQUIPMENT RoHS DIRECTIVE (2002/95/EC)

MOLEX P/N	DIM - 'A'	DESCRIPTION
11119-1000	1000	

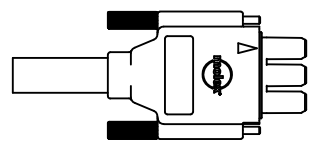
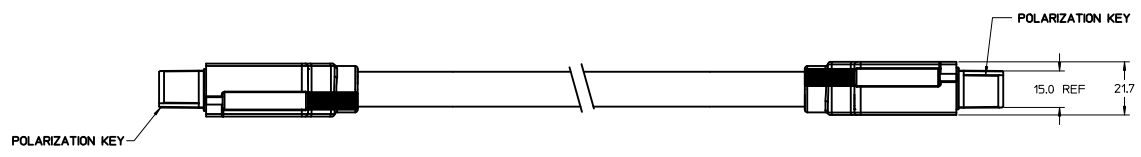
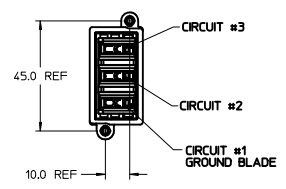
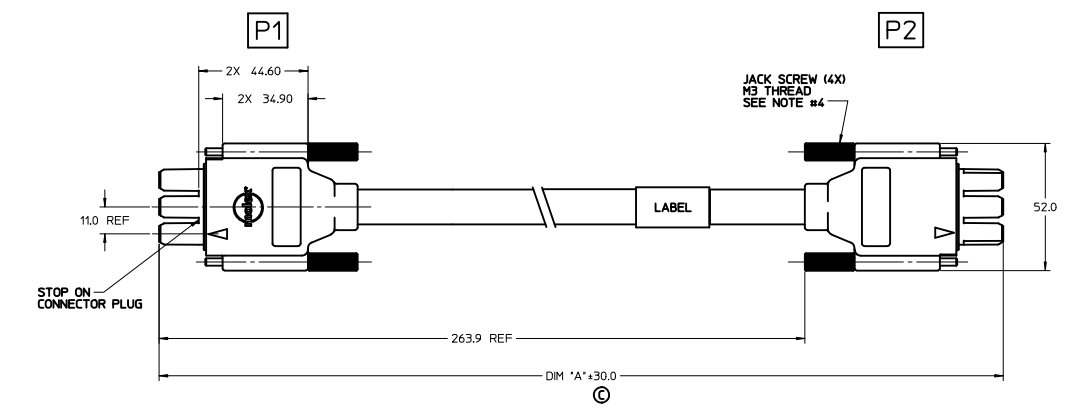
<b>CHANGED DIM A</b> EC NO: CPG2012-0602 DRAWN BY: CHYD:REVES DATE: 2011/02/20 APPR: KMONROE DATE: 2012/02/07	QUALITY SYMBOLS ▽=0 ▽=0	GENERAL TOLERANCES (UNLESS SPECIFIED)		DIMENSION STYLE MM ONLY		SCALE 1:1	DESIGN UNITS METRIC	THIRD ANGLE PROJECTION
		4 PLACES ±0.10 mm 3 PLACES ±0.15 mm 2 PLACES ±0.18 mm 1 PLACE ±0.3 mm ANGULAR ±1/2°		DRAWN BY: JREEVES DATE: 2010/05/18 CHECKED BY: JREEVES DATE: 2010/05/18 APPROVED BY: KMONROE DATE: 2010/07/19		TITLE: POWER CABLE ASSY 3 CKTS WITH EMI GASKET		
DRAFT WHERE APPLICABLE MUST REMAIN WITHIN DIMENSIONS		MATERIAL NO. SEE CHART		MOLEX INCORPORATED		DOCUMENT NO. SD-11119-001		
SIZE D		THIS DRAWING CONTAINS INFORMATION THAT IS PROPRIETARY TO MOLEX INCORPORATED AND SHOULD NOT BE USED WITHOUT WRITTEN PERMISSION						



MATING VIEW OF P1  
SCALE 2:1



DETAIL - A  
SCALE 5:1

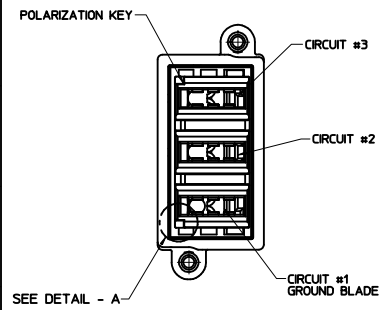


- NOTES**
- MATERIAL:**
    - 3 CKT HSG - PBT (UL 94V-0)
    - TERMINAL - COPPER ALLOY
    - PLATING: 30m" GOLD IN CONTACT AREA AND 100m" TIN OVER 50m" NICKEL OVERALL
    - TPA - PBT (UL 94V-0)
    - OVER-HOLD - PP RTP #54 UL94V-0
    - JACK SCREW - STAINLESS 303
    - PREMOLD - TEO RTP 2899 X 121388 UL94V-0
    - COPPER TAPE
    - BLOCKER - TEO RTP 2899 X 121388 UL94V-0
    - PLUGGING LOCATION LABEL -
    - WRAP LABEL -
    - CABLE - UL RECOGNIZED AWM STYLE 2570
    - (2) 8 AWG POWER TIN PLATED COPPER - HYTREL INSULATION
    - (1) 10 AWG DRAIN - BARE COPPER
    - SHIELD - 34 AWG TIN PLATED COPPER
    - JACKET - XPBT BLACK
  - CABLE MATES TO PLUG SERIES 46817
  - THUMB SCREW AND OVER-HOLD REQUIREMENTS:  
THUMB SCREW MUST WITHSTAND A MINIMUM EXTRACTION FORCE OF 15kg (3.3 POUNDS)
  - STRAIN RELIEF MUST CONTAIN JACKET AND WITHSTAND A MINIMUM PULL FORCE OF 22 LBS IN ANY DIRECTION.
  - FINAL ASSEMBLY TO BE HI-POT TESTED
    - FROM POS #2 & #3
    - TO POS #1 (GND)
    - PRIMARIES TO GROUND
    - VOLTAGE: 1500 VRMS/2121 VDC
  - PRODUCT SPECIFICATION: TBD
  - THIS PRODUCT MEETS THE RESTRICTION OF HAZARDOUS SUBSTANCES IN ELECTRICAL AND ELECTRONIC EQUIPMENT RoHS DIRECTIVE (2002/95/EC)

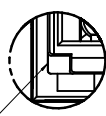
Ⓢ

MOLEX P/N	DIM - 'A'	DESCRIPTION
11119-2000	1000	

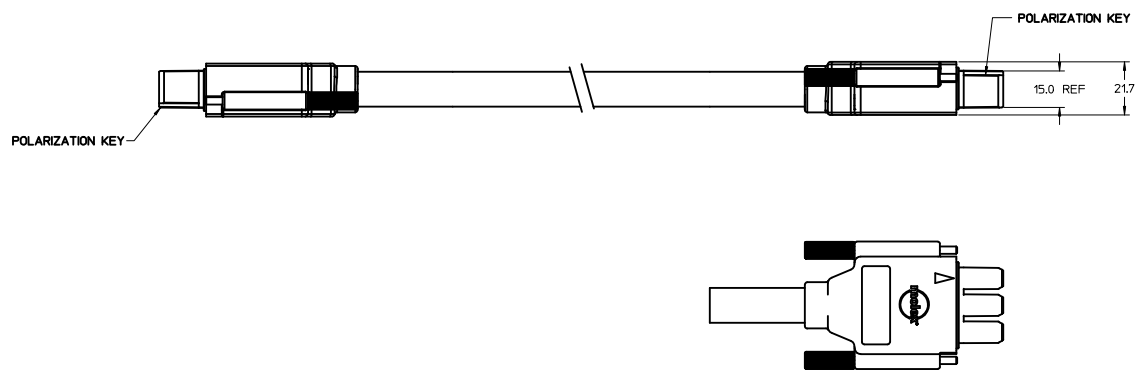
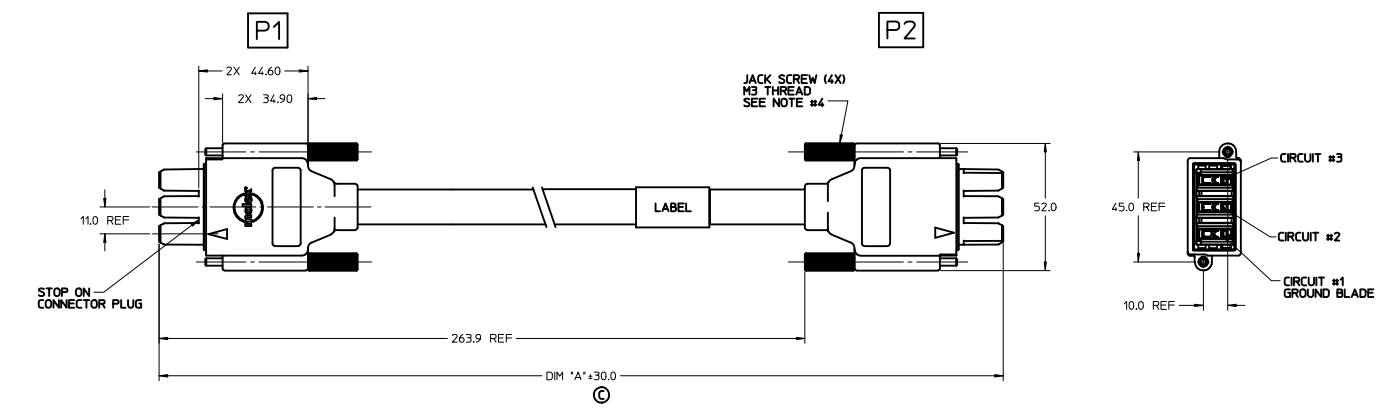
<b>CHANGE DIM A</b> EC NO: CPG2012-0602 DRAWN: PRATT 2011/02/20 CHKD: REEVES 2011/02/20 APPR: KMONROE 2012/02/07	QUALITY SYMBOLS ▽=0 ▽=0	GENERAL TOLERANCES (UNLESS SPECIFIED)		DIMENSION STYLE <b>MM ONLY</b>	SCALE 1:1	DESIGN UNITS METRIC	THIRD ANGLE PROJECTION
		4 PLACES ±---   ±--- 3 PLACES ±---   ±--- 2 PLACES ±0.18   ±--- 1 PLACE ±0.3   ±--- ANGULAR ±1/2°	DRAWN BY JREEVES	DATE 2010/05/21	TITLE <b>POWER CABLE ASSY 3 CKTS</b>		
DRAFT WHERE APPLICABLE MUST REMAIN WITHIN DIMENSIONS		APPROVED BY KMONROE	DATE 2010/07/19	MATERIAL NO. <b>SEE CHART</b>		DOCUMENT NO. <b>SD-111119-002</b>	
SIZE D THIS DRAWING CONTAINS INFORMATION THAT IS PROPRIETARY TO MOLEX INCORPORATED AND SHOULD NOT BE USED WITHOUT WRITTEN PERMISSION				MOLEX INCORPORATED		SHEET NO. 1 OF 1	



MATING VIEW OF P1  
SCALE 2:1



DETAIL - A  
SCALE 5:1



- NOTES**
- MATERIAL:**
    - 3 CKT HSG - PBT (UL 94V-0)
    - TERMINAL - COPPER ALLOY
    - PLATING: 30m" GOLD IN CONTACT AREA AND 100m" TIN OVER 50m" NICKEL OVERALL
    - TPA - PBT (UL 94V-0)
    - OVER-HOLD - PP RTP #54 UL94V-0
    - JACK SCREW - STAINLESS 303
    - PREMOLD - TEO RTP 2899 X 121388 UL94V-0
    - COPPER TAPE
    - BLOCKER - TEO RTP 2899 X 121388 UL94V-0
    - PLUGGING LOCATION LABEL -
    - WRAP LABEL -
    - CABLE - UL RECOGNIZED AWM STYLE 2570
    - (2) 8 AWG POWER TIN PLATED COPPER - HYTREL INSULATION
    - (1) 10 AWG DRAIN - BARE COPPER
    - SHIELD - 34 AWG TIN PLATED COPPER
    - JACKET - XPBT BLACK
  - CABLE MATES TO PLUG SERIES 46817
  - THUMB SCREW AND OVER-HOLD REQUIREMENTS:  
THUMB SCREW MUST WITHSTAND A MINIMUM EXTRACTION FORCE OF 15kg (3.3 POUNDS)
  - STRAIN RELIEF MUST CONTAIN JACKET AND WITHSTAND A MINIMUM PULL FORCE OF 22 LBS IN ANY DIRECTION.
  - FINAL ASSEMBLY TO BE HI-POT TESTED
    - FROM POS #2 & #3
    - TO POS #1 (GND)
    - PRIMARIES TO GROUND
    - VOLTAGE: 1500 VRMS/2121 VDC
  - PRODUCT SPECIFICATION: TBD
  - THIS PRODUCT MEETS THE RESTRICTION OF HAZARDOUS SUBSTANCES IN ELECTRICAL AND ELECTRONIC EQUIPMENT RoHS DIRECTIVE (2002/95/EC)

©

MOLEX P/N	DIM - 'A'	DESCRIPTION
11119-2000	1000	

<b>CHANGE DIM A</b> EC NO: CPG2012-0602 DRAWN: PRATT 2011/02/20 CHKD: REEVES 2011/02/20 APPR: KMONROE 2012/02/07	QUALITY SYMBOLS ▽=0 ▽=0	GENERAL TOLERANCES (UNLESS SPECIFIED) mm INCH 4 PLACES ±--- ±--- 3 PLACES ±--- ±--- 2 PLACES ±0.18 ±--- 1 PLACE ±0.3 ±--- ANGULAR ±1/2°		DIMENSION STYLE <b>MM ONLY</b>	SCALE 1:1	DESIGN UNITS METRIC	THIRD ANGLE PROJECTION
		DRAFT WHERE APPLICABLE MUST REMAIN WITHIN DIMENSIONS		DRAWN BY DATE JREEVES 2010/05/21	CHECKED BY DATE DATE	APPROVED BY DATE KMONROE 2010/07/19	MATERIAL NO. SEE CHART

THIS DRAWING CONTAINS INFORMATION THAT IS PROPRIETARY TO MOLEX INCORPORATED AND SHOULD NOT BE USED WITHOUT WRITTEN PERMISSION