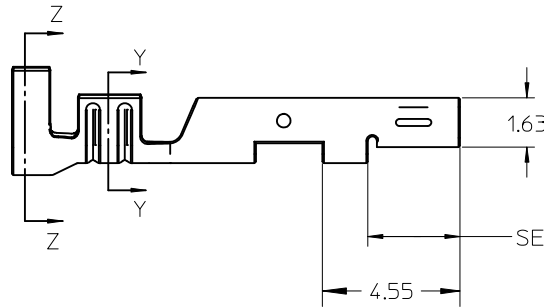
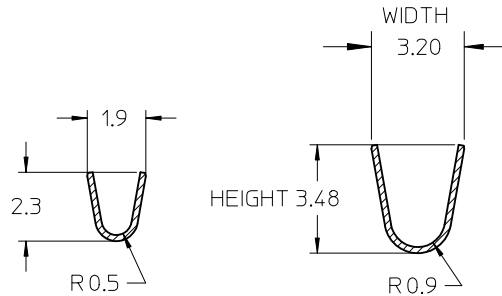
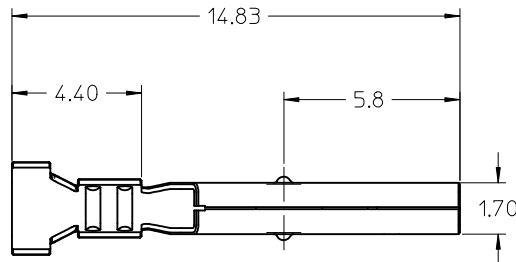
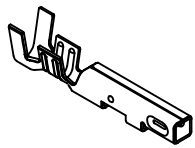


NOTES:

- MATERIAL: HIGH PERFORMANCE COPPER ALLOY
- FINISH:
 - 222 - OVERALL TIN: 100 MI MIN OVER NICKEL
 - 228 - SELECT GOLD: 30 MI MIN
 - SELECT TIN: 100 MI MIN
 - OVER NICKEL
- PRODUCT SPECIFICATION: PS-46064-001
- PACKAGING: REEL PACK PER: PK-46055-002
LOOSE PACK PER: PK-5556-003
- TERMINAL TO BE USED WITH ASSY NUMBER: 46064
- WIRE SPECIFICATION: SEE CHART.
- WHEN USING OVERALL TIN PLATED TERMINALS: FOR APPLICATIONS INVOLVING VIBRATION AND/OR THERMAL CYCLING, MOLEX STRONGLY RECOMMENDS THE USE OF NYE LUBRICANT, NYE 760G, ON THE MATING END OF THE TERMINAL. LUBRICANT SHOULD BE APPLIED PRIOR TO INSERTION INTO THE HOUSING.

LOOSE PACKAGED MATERIAL NUMBER	REEL PACKAGED MATERIAL NUMBER	FINISH	WIRE SPEC	INSULATION DIA	INSULATION (CRIMPED)		CONDUCTOR (CRIMPED)					
					HEIGHT		WIDTH		HEIGHT		WIDTH	
					MIN	MAX	MIN	MAX	MIN	MAX	MIN	MAX
46055-0007	46055-0005	222 - TIN	UL1015 18/20 AWG	2.52 / 2.81	N/A	3.20	2.70	2.90	1.05	1.15	1.50	1.70
46055-0008	46055-0006	228 - SELECT GOLD	UL1015 18/20 AWG	2.52 / 2.81	N/A	3.20	2.70	2.90	1.05	1.15	1.50	1.70

UPDATE NOTE 4 EC NO: UCP2011-1228 DRWN: J JAGUILAR 2010/10/29 CHKD: APPR: FSMITH 2010/11/09	QUALITY SYMBOLS	GENERAL TOLERANCES (UNLESS SPECIFIED)	DIMENSION STYLE	SCALE	DESIGN UNITS	THIRD ANGLE PROJECTION														
	$\nabla = 0$ $\nabla = 0$ $\nabla = 0$	<table border="1"> <tr><th colspan="2">mm</th><th>INCH</th></tr> <tr><td>4 PLACES</td><td>\pm ---</td><td>\pm ---</td></tr> <tr><td>3 PLACES</td><td>\pm ---</td><td>\pm ---</td></tr> <tr><td>2 PLACES</td><td>\pm 0.25</td><td>\pm ---</td></tr> <tr><td>1 PLACE</td><td>\pm 0.38</td><td>\pm ---</td></tr> </table>	mm		INCH		4 PLACES	\pm ---	\pm ---	3 PLACES	\pm ---	\pm ---	2 PLACES	\pm 0.25	\pm ---	1 PLACE	\pm 0.38	\pm ---	MM ONLY	4:1
	mm		INCH																	
	4 PLACES	\pm ---	\pm ---																	
3 PLACES	\pm ---	\pm ---																		
2 PLACES	\pm 0.25	\pm ---																		
1 PLACE	\pm 0.38	\pm ---																		
	ANGULAR \pm 3°	DRAFT WHERE APPLICABLE MUST REMAIN WITHIN DIMENSIONS	DRAWN BY: KSAMIEC DATE: 2007/03/22 CHECKED BY: DATE: APPROVED BY: FSMITH DATE: 2010/11/09	TITLE: SEALED MINIFIT H20 RECEPTACLE TERMINAL MOLEX MOLEX INCORPORATED																
D2			MATERIAL NO. SEE CHART SIZE A THIS DRAWING CONTAINS INFORMATION THAT IS PROPRIETARY TO MOLEX INCORPORATED AND SHOULD NOT BE USED WITHOUT WRITTEN PERMISSION	DOCUMENT NO. SD-46055-001	SHEET NO. 1 OF 1															



NOTES:

- MATERIAL: HIGH PERFORMANCE COPPER ALLOY
- FINISH:
 - 222 - OVERALL TIN: 100 MI MIN OVER NICKEL
 - 228 - SELECT GOLD: 30 MI MIN
 - SELECT TIN: 100 MI MIN
 - OVER NICKEL
- PRODUCT SPECIFICATION: PS-46064-001
- PACKAGING: REEL PACK PER: PK-46055-002
LOOSE PACK PER: PK-5556-003
- TERMINAL TO BE USED WITH ASSY NUMBER: 46064
- WIRE SPECIFICATION: SEE CHART.
- WHEN USING OVERALL TIN PLATED TERMINALS: FOR APPLICATIONS INVOLVING VIBRATION AND/OR THERMAL CYCLING, MOLEX STRONGLY RECOMMENDS THE USE OF NYE LUBRICANT, NYE 760G, ON THE MATING END OF THE TERMINAL. LUBRICANT SHOULD BE APPLIED PRIOR TO INSERTION INTO THE HOUSING.

SECTION Y-Y
CONDUCTOR CRIMP

SECTION Z-Z
INSULATION CRIMP

SEE NOTE 7

LOOSE PACKAGED MATERIAL NUMBER	REEL PACKAGED MATERIAL NUMBER	FINISH	WIRE SPEC	INSULATION DIA	INSULATION (CRIMPED)		CONDUCTOR (CRIMPED)					
					HEIGHT		WIDTH		HEIGHT		WIDTH	
					MIN	MAX	MIN	MAX	MIN	MAX	MIN	MAX
46055-0007	46055-0005	222 - TIN	UL1015 18/20 AWG	2.52 / 2.81	N/A	3.20	2.70	2.90	1.05	1.15	1.50	1.70
46055-0008	46055-0006	228 - SELECT GOLD	UL1015 18/20 AWG	2.52 / 2.81	N/A	3.20	2.70	2.90	1.05	1.15	1.50	1.70

UPDATE NOTE 4
EC NO: UCP2011-1228
DRWN: J JAGUILAR 2010/10/29
CHKD:
APPR: FSMITH 2010/11/09

QUALITY SYMBOLS
 = 0
 = 0
 = 0

GENERAL TOLERANCES (UNLESS SPECIFIED)

	mm	INCH
4 PLACES	± ---	± ---
3 PLACES	± ---	± ---
2 PLACES	± 0.25	± ---
1 PLACE	± 0.38	± ---

ANGULAR ± 3 °

DRAFT WHERE APPLICABLE
MUST REMAIN
WITHIN DIMENSIONS

DIMENSION STYLE
MM ONLY

DRAWN BY: KSAMIEC
DATE: 2007/03/22

CHECKED BY: _____
DATE: _____

APPROVED BY: FSMITH
DATE: 2010/11/09

MATERIAL NO.
SEE CHART

SIZE
A

SCALE
4:1

DESIGN UNITS
METRIC

THIRD ANGLE PROJECTION

TITLE
**SEALED MINIFIT H20
RECEPTACLE TERMINAL**

MOLEX INCORPORATED

DOCUMENT NO.
SD-46055-001

SHEET NO.
1 OF 1

THIS DRAWING CONTAINS INFORMATION THAT IS PROPRIETARY TO MOLEX INCORPORATED AND SHOULD NOT BE USED WITHOUT WRITTEN PERMISSION