

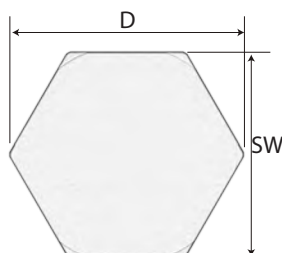
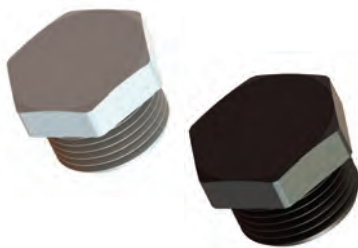
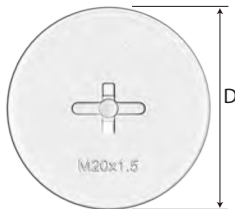
Hole Plug

Round or hex polyamide hole plugs, black or gray

Metric & PG
Thread

Hole plugs are used where a pre-existing threaded hole exists with no cable that needs to be closed and protected. SAB offers a round and hex top Polyamide 6 product in gray or black & PG and metric thread.

Technical data:	
Material:	Polyamide 6
Temperature range:	
permanent:	-20°C to +100°C
intermittent:	-40°C to +150°C
Flammability:	V2 (according to UL 94)



Part Number		Thread Type	Plug Diameter (D)		Thread Length (TL)		Height (h)	
Gray	Black		inches	mm	inches	mm	inches	mm
Metric: Round								
HPR-17	HPR-24	M12x1.5	0.591	15.0	0.236	6	0.118	3.0
HPR-18	HPR-25	M16x1.5	0.768	19.5	0.236	6	0.134	3.4
HPR-19	HPR-26	M20x1.5	1.004	25.5	0.236	6	0.118	3.0
HPR-20	HPR-27	M25x1.5	1.181	30.0	0.394	10	0.157	4.0
HPR-21	HPR-28	M32x1.5	1.457	37.0	0.315	8	0.157	4.0
HPR-22	HPR-29	M40x1.5	1.811	46.0	0.315	8	0.177	4.5
HPR-23	HPR-30	M50x1.5	2.165	55.0	0.394	10	0.146	3.7
PG: Round								
HPR-01	HPR-09	PG 7	0.591	15.0	0.236	6	0.118	3.0
HPR-02	HPR-10	PG 9	0.768	19.5	0.236	6	0.118	3.0
HPR-03	HPR-11	PG 11	0.866	22.0	0.236	6	0.118	3.0
HPR-04	HPR-12	PG 13.5	0.984	25.0	0.236	6	0.118	3.0
HPR-05	HPR-13	PG 16	1.063	27.0	0.236	6	0.134	3.4
HPR-06	HPR-14	PG 21	1.299	33.0	0.315	8	0.157	4.0
HPR-07	HPR-15	PG 29	1.732	44.0	0.315	8	0.126	3.2
HPR-08	HPR-16	PG 36	2.165	55.0	0.394	10	0.146	3.7

Part Number		Thread Type	Plug Diameter (D)		Thread Length (TL)		Wrenching Flat (SW)		Height (h)	Overall Height (OH)
Gray	Black		inches	mm	inches	mm	inches	mm	inches	mm
Metric: Hex										
HPH-01	HPH-13	M12x1.5	0.669	17.0	0.394	10.0	0.591	15	0.197	0.591
HPH-02	HPH-14	M16x1.5	0.866	22.0	0.433	11.0	0.748	19	0.169	0.602
HPH-03	HPH-15	M16x1.5	0.866	22.0	0.591	15.0	0.748	19	0.169	0.76
HPH-04	HPH-16	M20x1.5	1.024	26.0	0.433	11.0	0.906	23	0.236	0.669
HPH-06	HPH-18	M20x1.5	1.024	26.0	0.591	15.0	0.906	23	0.236	0.827
HPH-07	HPH-19	M25x1.5	1.260	32.0	0.394	10.0	1.102	28	0.228	0.622
HPH-08	HPH-20	M25x1.5	1.260	32.0	0.591	15.0	1.102	28	0.228	0.819
HPH-09	HPH-21	M32x1.5	1.634	41.5	0.591	15.0	1.417	36	0.307	0.898
HPH-10	HPH-22	M40x1.5	2.087	53.0	0.709	18.0	1.811	46	0.335	1.044
HPH-11	HPH-23	M50x1.5	2.500	63.5	0.709	18.0	2.165	55	0.374	1.083
HPH-12	HPH-24	M63x1.5	3.130	79.5	0.709	18.0	2.717	69	0.374	1.083