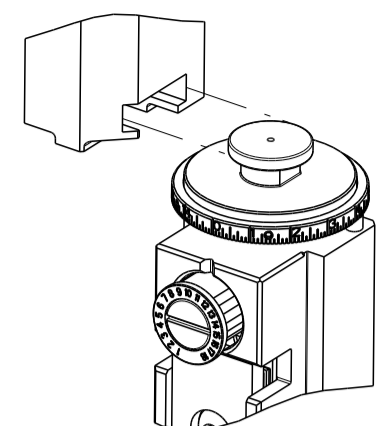


PART NUMBER	REVISION	DESCRIPTION	FEED TYPE
2266403-2	C	FINE CRIMP HEIGHT ADJUST	PNEUMATIC
7-2266403-2	C	PNEUMATIC AND CRIMP TOOLING KIT	PNEUMATIC
7-2266403-7	A	CRIMP TOOLING KIT	-

ATLANTIC VERSION TERMINATOR INTERFACE ADAPTER



APPLICATOR DATA		
CRIMP	SIZE	TYPE
WIRE	6.35 mm [.250]	F
INSUL	8.51 mm [.335]	OV

APPLICATOR INSTRUCTIONS  
408-35043

TERMINAL DATA: YAZAKI TERMINAL YAZAKI CRIMP SPECIFICATION			
TERMINAL NAME: 9.5MM RECEPTACLE			
WIRE STRIP LENGTH		INSULATION DIAMETER RANGE	
7.50-8.50 mm [.295-.335 IN]		Ø4.60-5.80 mm [.181-.228 IN]	
TERMINAL APPLICATION SPECIFICATION		72-WT10-3209 Rev WA2114	-
TERMINALS APPLIED			
TE TERMINAL	YAZAKI TERMINAL	TE TERMINAL	YAZAKI TERMINAL
1572755-1	7116-3250	2-1203801-3	7116-3250

WIRE SIZE	CRIMP HEIGHT mm [INCH]	CRIMP HEIGHT REFERENCE SETTING
8.00mm2	2.75 +/- 0.05 [.108 +/- .002]	5.9
6.00mm2	2.45 +/- 0.05 [.096 +/- .002]	6.7
5.00mm2	2.40 +/- 0.05 [.094 +/- .002]	9.2

- RECOMMENDED SPARE PARTS
- REFER TO SUPPLIED INSTRUCTION SHEET FOR CLEANING, LUBRICATION AND STORAGE OF APPLICATOR.
- APPLY PART NUMBER 2-23419-6 LOCTITE TO THREADS OF ITEM 242.
- CRIMP HEIGHT REFERENCE SETTING WAS THE SETTING USED WHEN THE APPLICATOR WAS QUALIFIED AT THE FACTORY. ADJUSTMENT MAY BE NECESSARY WHEN RUNNING APPLICATOR IN THE FIELD.
- TERMINAL PITCH NOT COMPATIBLE WITH MECHANICAL FEED.
- TERMINAL LUBRICANT IS RECOMMENDED.
- 7. UNLESS SPECIFIED OTHERWISE TORQUE VALUES SHALL BE USED PER DOCUMENT, 101-35000.

LOC	DIST	REVISIONS					
A	66	P	LTN	DESCRIPTION	DATE	OWN	APVD
		A		RELEASED	17DEC2014	KH	TE
		B		ECR-19-000060	03JAN2019	JAH	TE
		C		ECR-19-009765	22JUN2019	TB	TE

-	2	2	2168083-1	SCR, SKT HD CAP, RoHS, M3 X 8.0	269	
-	1	1	1633782-2	FENCE	267	
-	1	1	1803078-2	SPACER, PRECISION	259	
-	1	1	2119641-1	FEED CAM, AIR FEED	248	
-	1	1	2119082-7	CAM, SNAIL, INSULATION ADJUSTMENT	244	
-	1	1	2079764-1	WASHER, WAVE SPRING, CREST-TO-CREST	243	
	1	1	2119083-1	RETAINER, INSULATION DIAL	242	
-	1	1	7-18023-7	SCR, SKT HD CAP M3 X 4.0	241	
-	1	1	2844940-2	AIR FEED MODULE	238	
-	REF	REF	994970-2	COUNTER, MAGNETIC	164	
-	1	1	1-18028-2	WASHER, FLAT, REG M4	119	
	1	1	2119955-1	ASSY, LUBRICATOR, SIDE FEED	113	
-	1	1	2844908-1	SCREW, LOCKING	99	
-	1	1	2844907-1	POST, LOCKING	98	
-	1	1	1-690438-0	FRONT STRIP GUIDE	96	
-	2	2	2168083-1	SCR, SKT HD CAP, RoHS, M3 X 8.0	95	
-	1	1	1-455888-1	SPACER, CRIMPER	82	
-	2	2	2079383-4	SCR, BHSC, RoHS (M4 X 8)	79	
-	1	1	1803096-1	EXTENSION PLATE	78	
-	1	1	1803607-3	DOCUMENTATION PACKAGE	71	
-	1	1	2119791-5	DEPRESSOR, WIRE	70	
-	1	1	2119740-1	TAG IDENTIFICATION	67	
-	2	2	2168078-1	SCREW, DRIVE, RH, RoHS, 2 x .188	66	
-	2	2	2-18032-5	SCR, SET, FLT PNT, M5 X 20.0	61	
-	1	1	2168083-2	SCR, SKT HD CAP, RoHS, M4 X 8.0	60	
-	1	1	5-18022-5	SCR, HEX HD CAP, M4 X 6.0	59	
-	1	1	1338683-8	FEED PAWL	56	
-	4	4	2168083-3	SCR, SKT HD CAP, RoHS, M4 X 12.0	54	
-	2	2	2168083-8	SCR, SKT HD CAP, RoHS, M4 X 16	53	
-	1	1	5018030-1	NUT, HEX, REG, RoHS, M3	52	
-	1	1	811242-5	BUMPER, HOLD DOWN	51	
-	1	1	690753-2	SPACER, TONKER	50	
-	1	1	18023-9	SCR, SKT HD CAP M4 X 6.0	49	
-	1	1	1803583-9	APPLICATOR BASIC ASSEMBLY, SF	46	
-	1	1	1803515-2	RAM ASSEMBLY, SF ATLANTIC	44	
-	1	1	1803602-2	SCR, BHSC, RoHS (M8 X 40)	41	
-	1	1	1-1752356-8	SUPPORT, TERMINAL	34	
-	2	2	2079383-5	SCR, BHSC, RoHS (M4 X 20)	33	
-	2	2	2-2844962-1	SPACER, CYLINDRICAL, STRIP GUIDE	30	
-	1	1	2844992-3	ASSEMBLY, STRIP GUIDE	29	
-	1	1	1-455888-5	SPACER, CRIMPER	28	
-	2	2	22283-1	SPRING, COMPRESSION	27	
-	1	1	356835-1	LEVER, DRAG RELEASE	26	
-	1	1	240792-1	DRAG, TERMINAL	25	
-	1	1	1320928-6	STRIP GUIDE	24	
-	1	1	980371-4	SCR, SKT HD SHLDR 5.0 DIA X 6.0	23	
-	1	1	2168083-2	SCR, SKT HD CAP, RoHS, M4 X 8.0	21	
-	1	1	1-18028-2	WASHER, FLAT, REG M4	20	
-	1	1	2119533-1	STRIPPER, SIDE FEED	19	
	1	1	2119806-1	INSERT, SHEAR	13	
-	1	1	3-22280-3	SPRING, COMPRESSION	12	
-	1	1	1-356885-3	STOP, SHEAR	11	
	1	1	2119805-1	SHEAR HOLDER, FRONT	10	
	1	1	454276-5	FLOATING SHEAR, FRONT	9	
	1	2	1	2-1633930-9	ANVIL, COMBINATION	8
-	1	1	1-240641-4	SPACER	7	
-	-	-	-	-	6	
-	1	1	1-2119757-2	DEPRESSOR, SHEAR	5	
-	1	1	238011-3	BLOCK, CRIMPER SPACER	4	
	1	2	1	6-2119785-4	CRIMPER, INSULATION OVERLAP PREMIUM	3
-	1	1	455888-7	SPACER, CRIMPER	2	
	1	2	1	456432-9	CRIMPER, WIRE	1

ATLANTIC VERSION  
Shown on sheets 1 of 4 & 2 of 4  
(Pacific version shown on sheets 3 of 4 & 4 of 4)

DIMENSIONS:		TOLERANCES UNLESS OTHERWISE SPECIFIED:		MATERIAL:		FINISH:	
mm	0 PLC ±	1 PLC ±	2 PLC ±	3 PLC ±	4 PLC ±	ANGLES	FINISH

OWN	H. HUANG	19NOV2012
CHK	S. XI	19NOV2012
APVD	S. XI	19NOV2012
PRODUCT SPEC		
APPLICATION SPEC		
SIZE	CAGE CODE	DRAWING NO
A1	00779	2266403
Customer Accessible Production Drawing		
SCALE	1:2	SHEET 1 OF 4

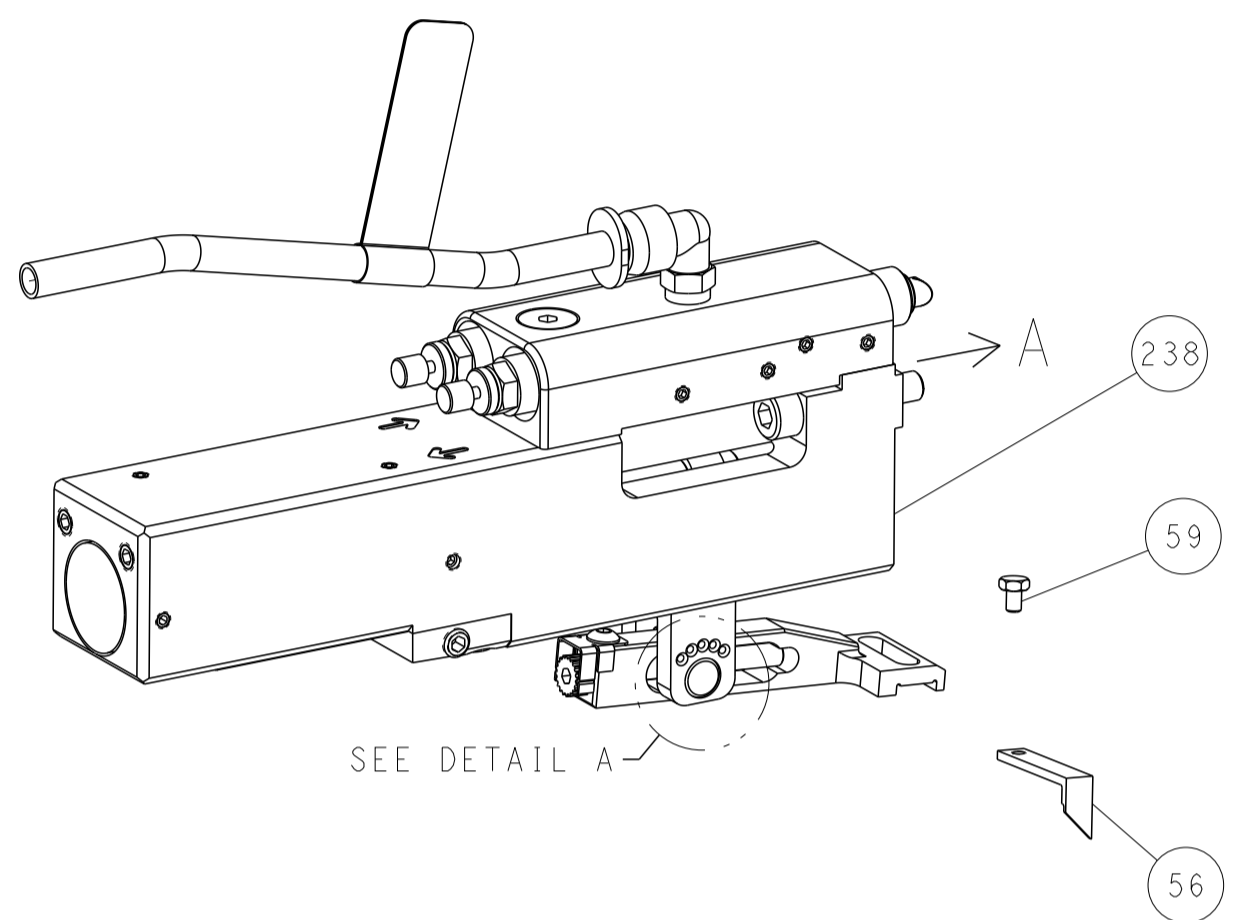
LOC	DIST	REV	DATE	BY	APPD
A	66				

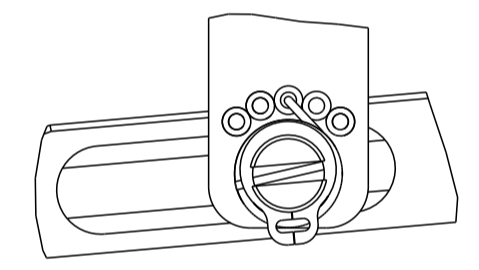
REVISIONS			
REV	DATE	DESCRIPTION	BY
-	-	SEE SHEET 1	-

# FEED TYPE

## PNEUMATIC

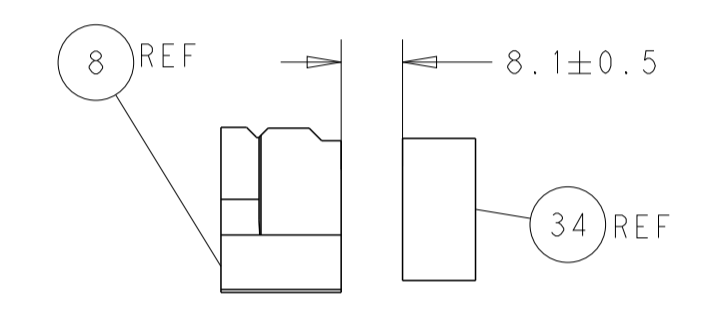
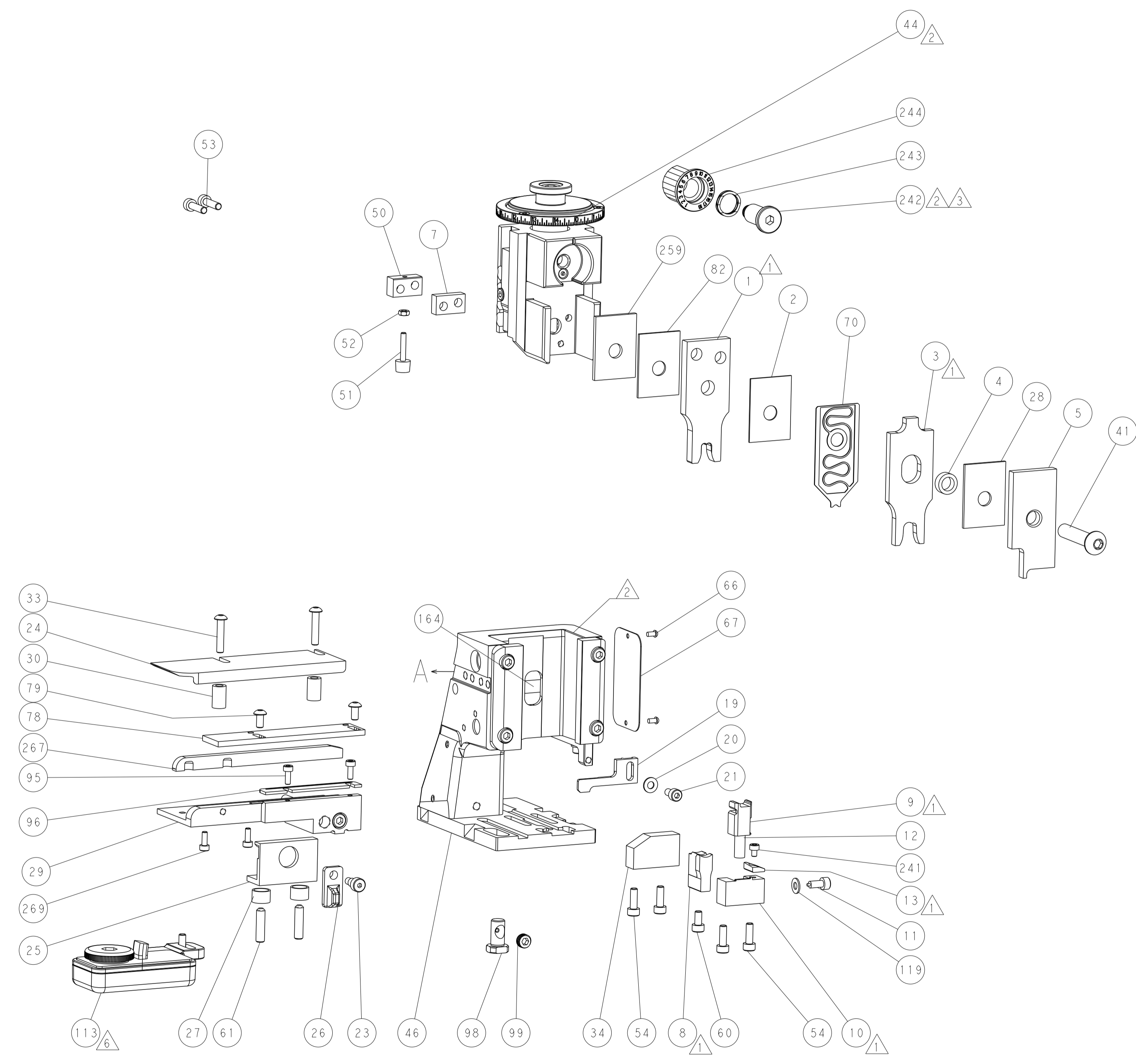
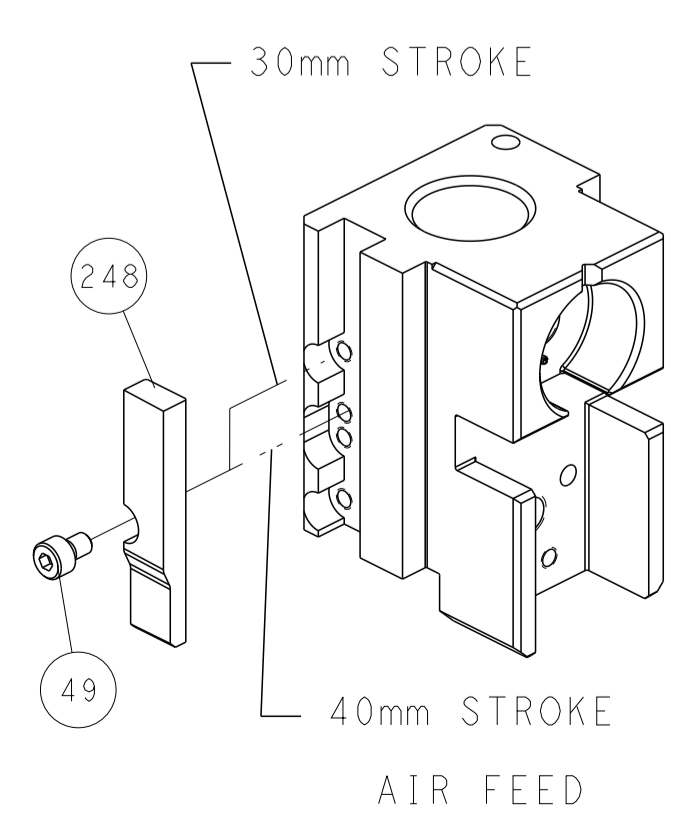


## FEED SPRING SETTING POSITION (SHOWN FROM REAR SIDE)

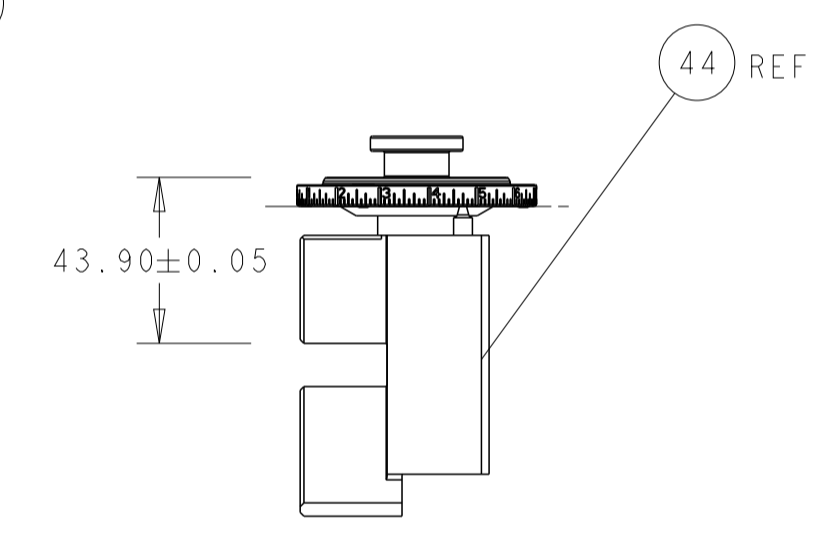


DETAIL A

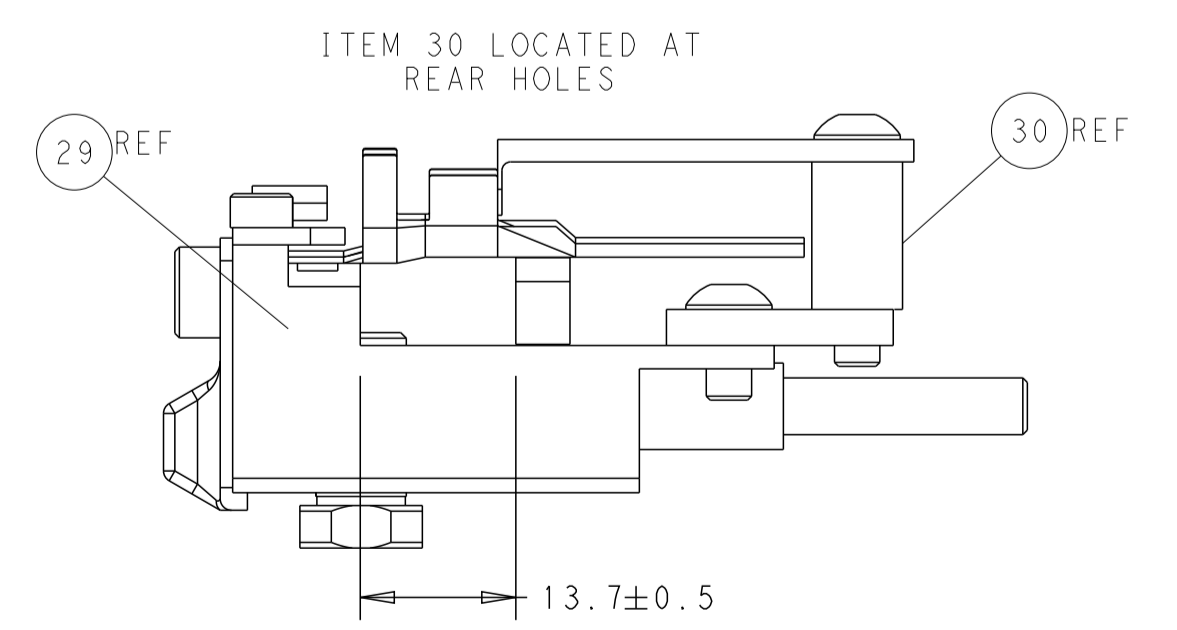
## CAM POSITION



TERMINAL SUPPORT LOCATION



RAM SET-UP



FEED TRACK POSITION GUIDE BY WIRE BARREL

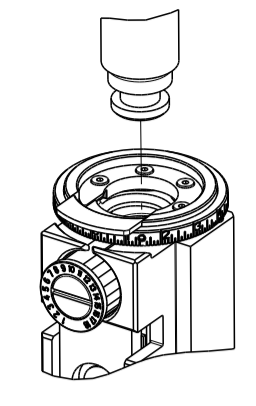
**ATLANTIC VERSION**  
 Shown on sheets 1 of 4 & 2 of 4  
 (Pacific version shown on sheets 3 of 4 & 4 of 4)

DIMENSIONS:		TOLERANCES UNLESS OTHERWISE SPECIFIED:		DWN R. HUANG 19NOV2012		TE Connectivity	
mm	0 PLC ±	1 PLC ±	2 PLC ±	3 PLC ±	4 PLC ±	Harrisburg, PA 17105-3608	
MATERIAL:		FINISH:		CHK S. XI 19NOV2012		NAME Ocean Side Feed Applicator	
				APVD S. XI 19NOV2012		SIZE CAGE CODE DRAWING NO RESTRICTED TO	
				PRODUCT SPEC		A1 00779 C=2266403	
				APPLICATION SPEC		Customer Accessible Production Drawing	
				WEIGHT		SCALE 1:2 SHEET 2 OF 4 REV C	

THIS DRAWING IS UNPUBLISHED. RELEASED FOR PUBLICATION 20  
 COPYRIGHT 20 BY TYCO ELECTRONICS CORPORATION. ALL RIGHTS RESERVED.

PART NUMBER	REVISION	DESCRIPTION	FEED TYPE
2-2266403-2	C	FINE CRIMP HEIGHT ADJUST	PNEUMATIC
7-2266403-7	A	CRIMP TOOLING KIT	-

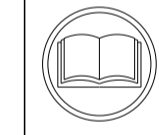
PACIFIC VERSION TERMINATOR  
 INTERFACE ADAPTER



APPLICATOR DATA		
CRIMP	SIZE	TYPE
WIRE	6.35 mm [ .250 ]	F
INSUL	8.51 mm [ .335 ]	OV
APPLICATOR INSTRUCTIONS 408-35043		

TERMINAL DATA: YAZAKI TERMINAL YAZAKI CRIMP SPECIFICATION			
TERMINAL NAME: 9.5MM RECEPTACLE			
WIRE STRIP LENGTH		INSULATION DIAMETER RANGE	
7.50-8.50 mm [ .295-.335 IN ]		Ø4.60-5.80 mm [ .181-.228 IN ]	
TERMINAL APPLICATION SPECIFICATION		72-WT10-3209 Rev WA2114	
TERMINALS APPLIED			
TE TERMINAL	YAZAKI TERMINAL	TE TERMINAL	YAZAKI TERMINAL
1572755-1	7116-3250	2-1203801-3	7116-3250

WIRE SIZE	CRIMP HEIGHT mm [INCH]	CRIMP HEIGHT REFERENCE SETTING
8.00mm2	2.75+/-0.05 [ .108+/- .002 ]	5.9
6.00mm2	2.45+/-0.05 [ .096+/- .002 ]	6.7
5.00mm2	2.40+/-0.05 [ .094+/- .002 ]	9.2



**\*WARNING**  
 ON INSTALLATION, SET WIRE DISC TO CRIMP HEIGHT REFERENCE SETTING FOR LARGEST WIRE SIZE. CRIMP HEIGHT REFERENCE SETTINGS GREATER THAN THE VALUE SHOWN MAY CAUSE DAMAGE TO THE CRIMP TOOLING, REFER TO THE INSTRUCTION SHEET FOR PROPER SETUP AND ADJUSTMENTS.

- RECOMMENDED SPARE PARTS
- REFER TO SUPPLIED INSTRUCTION SHEET FOR CLEANING, LUBRICATION AND STORAGE OF APPLICATOR.
- APPLY PART NUMBER 2-23419-6 LOCTITE TO THREADS OF ITEM 242.
- CRIMP HEIGHT REFERENCE SETTING WAS THE SETTING USED WHEN THE APPLICATOR WAS QUALIFIED AT THE FACTORY. ADJUSTMENT MAY BE NECESSARY WHEN RUNNING APPLICATOR IN THE FIELD.
- TERMINAL PITCH NOT COMPATIBLE WITH MECHANICAL FEED.
- TERMINAL LUBRICANT IS RECOMMENDED.
- 7. UNLESS SPECIFIED OTHERWISE TORQUE VALUES SHALL BE USED PER DOCUMENT, 101-35000.

LOC	DIST	REV	DATE	BY	CHK	APPD
A	66					

REVISIONS						
REV	DATE	BY	CHK	APPD	DESCRIPTION	ITEM NO
-					SEE SHEET 1	-
-	2				SCR, SKT HD CAP, RoHS, M3 X 8.0	269
-	1				FENCE	267
-	1				SPACER, PRECISION	259
-	1				CAM, SNAIL, INSULATION ADJUSTMENT	244
-	1				WASHER, WAVE SPRING, CREST-TO-CREST	243
-	1				RETAINER, INSULATION DIAL	242
-	1				SCR, SKT HD CAP M3 X 4.0	241
-	1				AIR FEED MODULE	238
-	REF				COUNTER, MAGNETIC	164
-	1				FEED CAM, AIR FEED	151
-	1				SCR, SKT HD CAP, RoHS, M4 X 16	144
-	4				SCR, SKT HD CAP, RoHS, M4 X 20	143
-	1				APPLICATOR BASIC ASSEMBLY, SF	141
-	1				RAM ASSEMBLY, SF PACIFIC	140
-	1				WASHER, FLAT, REG M4	119
-	1				ASSY, LUBRICATOR, SIDE FEED	113
-	1				SCREW, LOCKING	99
-	1				POST, LOCKING	98
-	1				FRONT STRIP GUIDE	96
-	2				SCR, SKT HD CAP, RoHS, M3 X 8.0	95
-	1				SPACER, CRIMPER	82
-	2				SCR, BHSC, RoHS (M4 X 8)	79
-	1				EXTENSION PLATE	78
-	1				DOCUMENTATION PACKAGE	71
-	1				DEPRESSOR, WIRE	70
-	1				TAG, IDENTIFICATION	67
-	2				SCREW, DRIVE, RH, RoHS, 2 x .188	66
-	2				SCR, SET, FLT PNT, M5 X 20.0	61
-	1				SCR, HEX HD CAP, M4 X 6.0	59
-	1				FEED PAWL	56
-	2				SCR, SKT HD CAP, RoHS, M4 X 16	53
-	1				NUT, HEX, REG, RoHS, M3	52
-	1				BUMPER, HOLD DOWN	51
-	1				SPACER, TONKER	50
-	1				SCR, SKT HD CAP M4 X 6.0	49
-	1				SCR, BHSC, RoHS (M8 X 40)	41
-	1				SUPPORT, TERMINAL	34
-	2				SCR, BHSC, RoHS (M4 X 20)	33
-	2				SPACER, CYLINDRICAL, STRIP GUIDE	30
-	1				ASSEMBLY, STRIP GUIDE	29
-	1				SPACER, CRIMPER	28
-	2				SPRING, COMPRESSION	27
-	1				LEVER, DRAG RELEASE	26
-	1				DRAG, TERMINAL	25
-	1				STRIP GUIDE	24
-	1				SCR, SKT HD SHLDR 5.0 DIA X 6.0	23
-	1				SCR, SKT HD CAP, RoHS, M4 X 8.0	21
-	1				WASHER, FLAT, REG M4	20
-	1				STRIPPER, SIDE FEED	19
-	1				INSERT, SHEAR	13
-	1				SPRING, COMPRESSION	12
-	1				STOP, SHEAR	11
-	1				SHEAR HOLDER, FRONT	10
-	1				FLOATING SHEAR, FRONT	9
-	1				ANVIL, COMBINATION	8
-	1				SPACER	7
-	-				-	6
-	1				DEPRESSOR, SHEAR	5
-	1				BLOCK, CRIMPER SPACER	4
-	1				CRIMPER, INSULATION OVERLAP PREMIUM	3
-	1				SPACER, CRIMPER	2
-	1				CRIMPER, WIRE	1
-77	-22				PART NO	ITEM NO

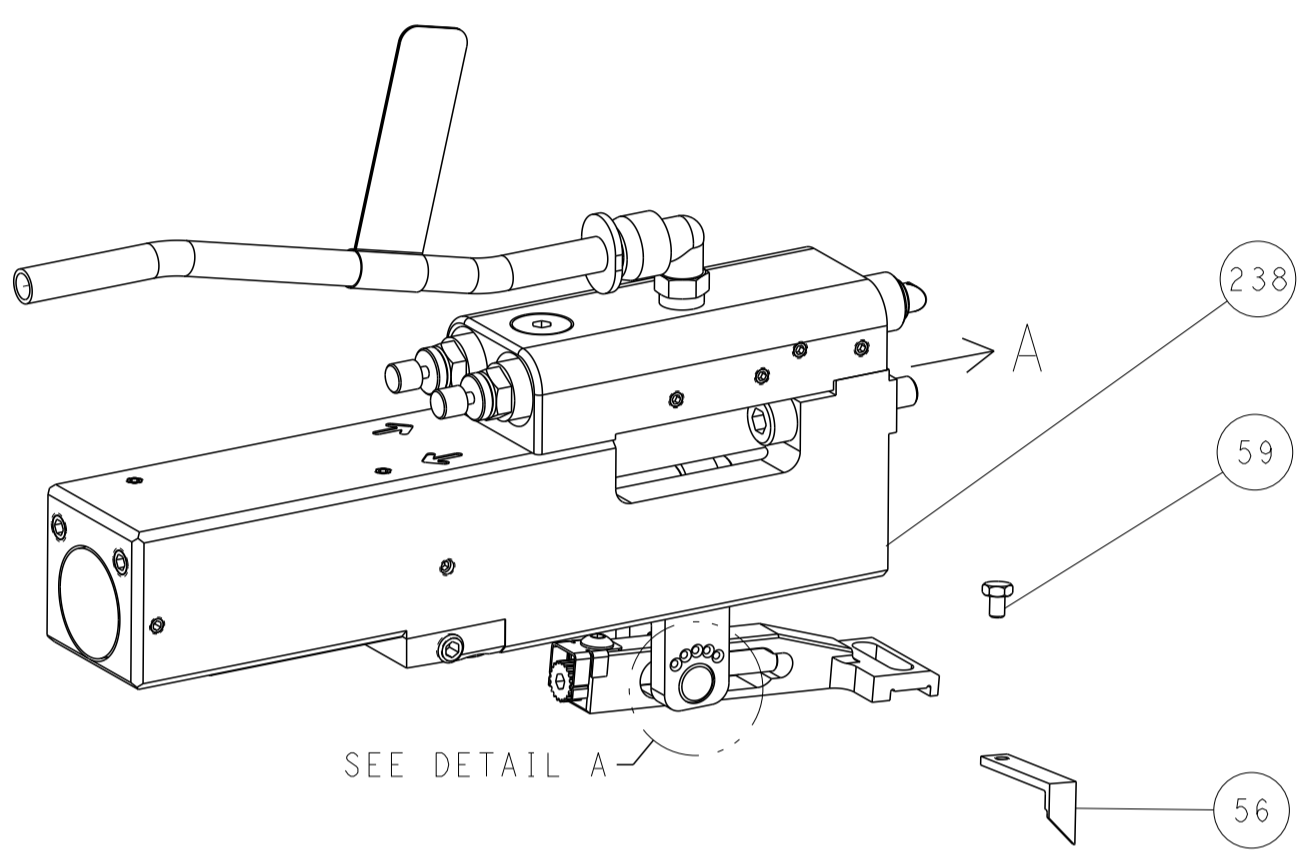
PACIFIC VERSION  
 Shown on sheets 3 of 4 & 4 of 4  
 (Atlantic version shown on sheets 1 of 4 & 2 of 4)

DIMENSIONS:		TOLERANCES UNLESS OTHERWISE SPECIFIED:		DWG: H. HUANG 19NOV2012		CHK: S. XI 19NOV2012		APPD: S. XI 19NOV2012		NAME: Ocean Side Feed Applicator	
mm	0 PLC ±	1 PLC ±	2 PLC ±	3 PLC ±	4 PLC ±	ANGLES ±	FINISH	SIZE: A1	CAGE CODE: 00779	DRAWING NO: C=2266403	RESTRICTED TO: -
MATERIAL: -								WEIGHT: -		SCALE: 1:2 SHEET 3 OF 4 REV C	

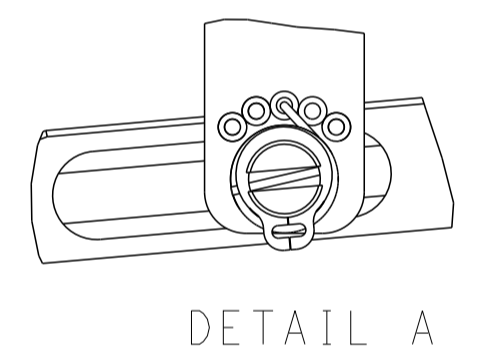
LOC	DIST	REVISIONS					
A	66	P	LTN	DESCRIPTION	DATE	DWN	APVD
		-		SEE SHEET 1	-	-	-

# FEED TYPE

## PNEUMATIC

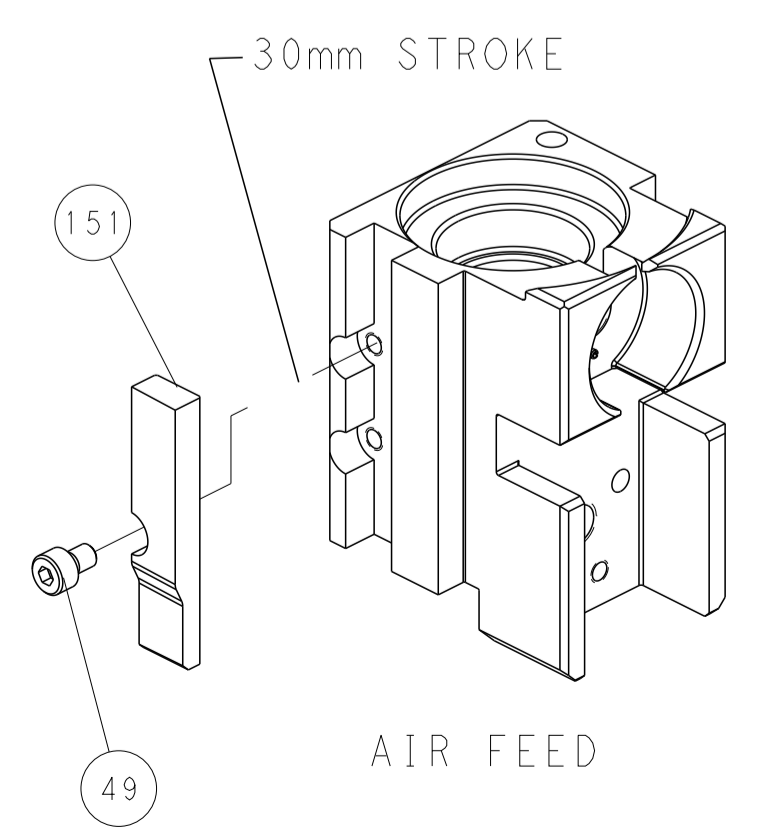


## FEED SPRING SETTING POSITION (SHOWN FROM REAR SIDE)

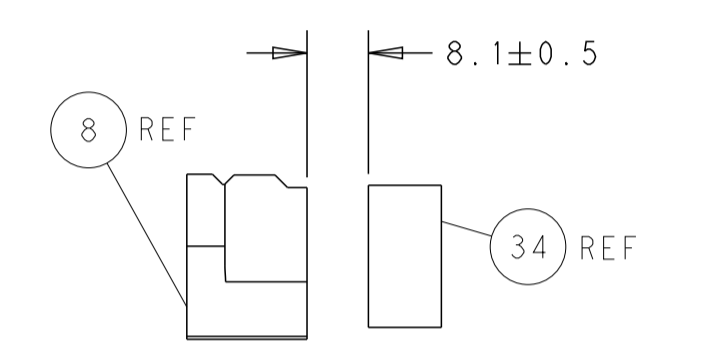
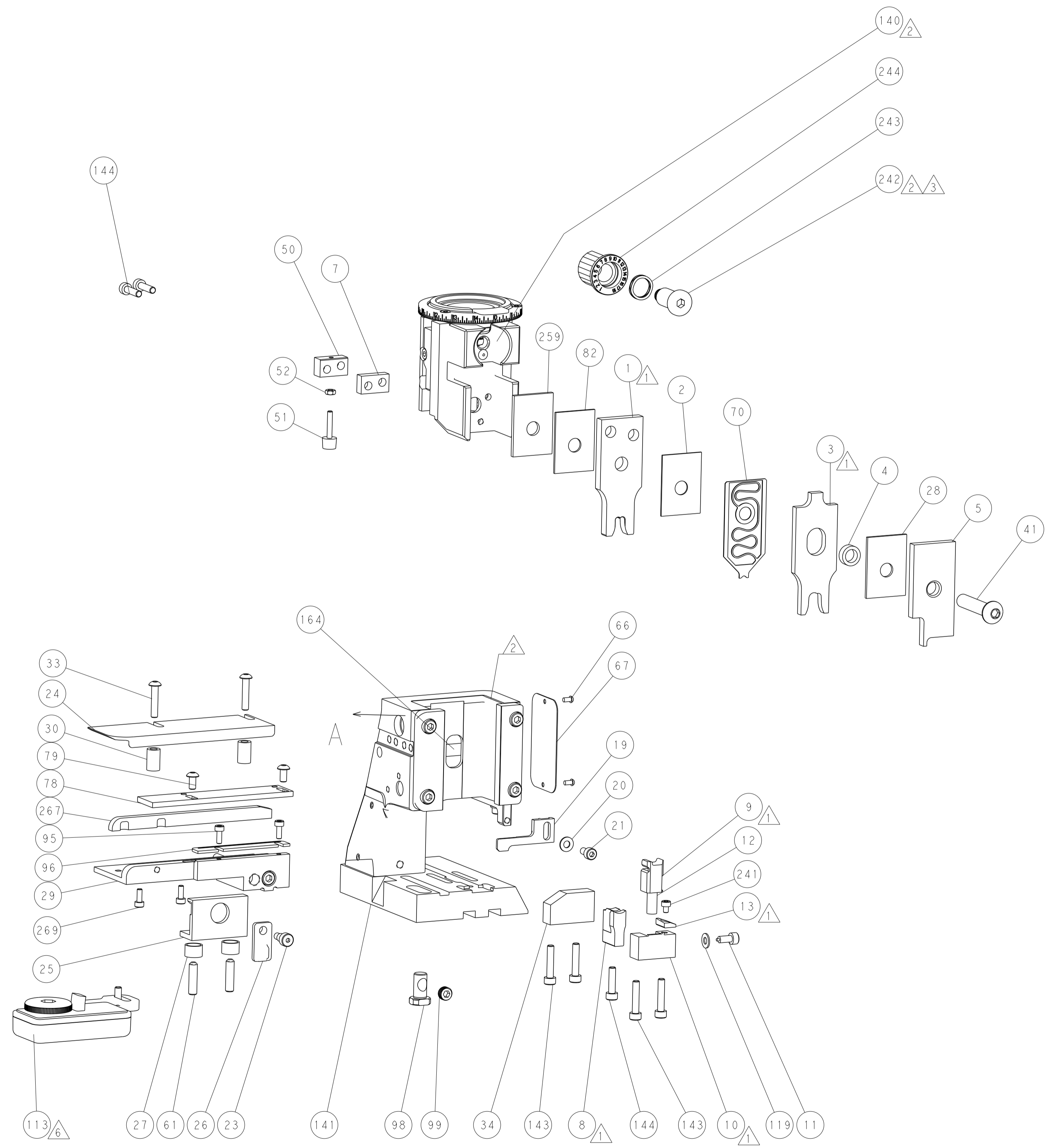


DETAIL A

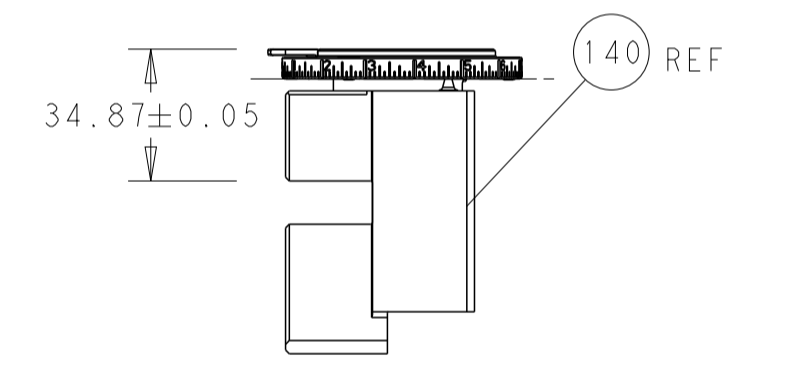
## CAM POSITION



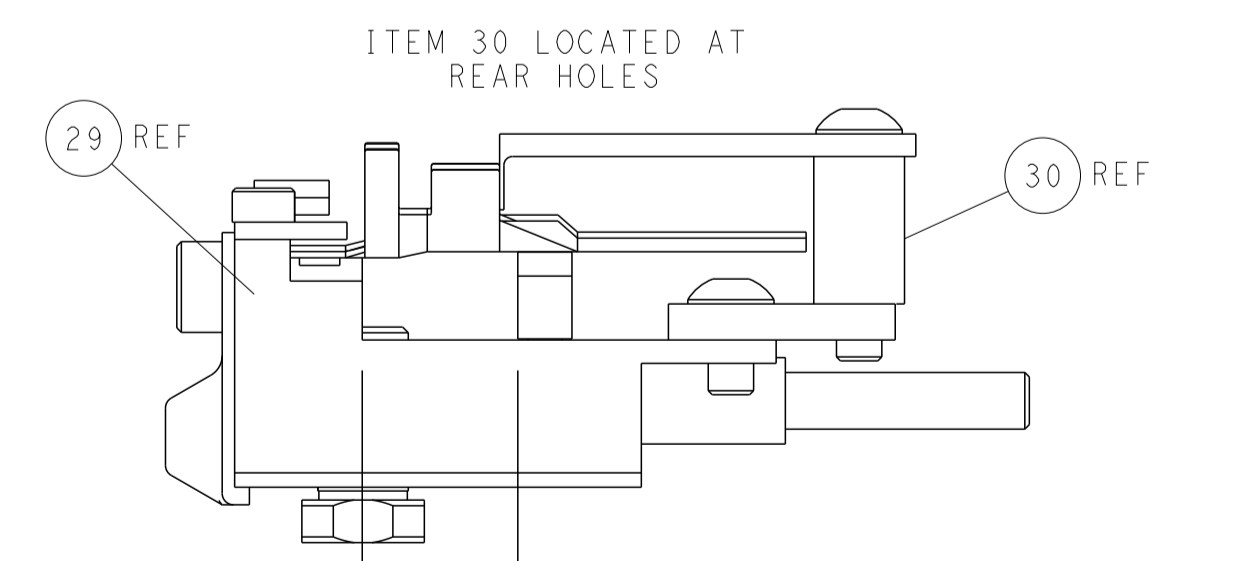
AIR FEED



TERMINAL SUPPORT LOCATION



RAM SET-UP



FEED TRACK POSITION GUIDE BY WIRE BARREL

**PACIFIC VERSION**  
 Shown on sheets 3 of 4 & 4 of 4  
 (Atlantic version shown on sheets 1 of 4 & 2 of 4)

<small>THIS DRAWING IS UNPUBLISHED. RELEASED FOR PUBLICATION. IT IS THE PROPERTY OF TYCO ELECTRONICS CORPORATION. IT IS TO BE USED ONLY FOR THE PURPOSES AND IN THE QUANTITIES SPECIFIED IN THE ORDER. IT IS TO BE RETURNED TO TYCO ELECTRONICS CORPORATION IF NOT SO. THIS DRAWING IS UNPUBLISHED. RELEASED FOR PUBLICATION. IT IS THE PROPERTY OF TYCO ELECTRONICS CORPORATION. IT IS TO BE USED ONLY FOR THE PURPOSES AND IN THE QUANTITIES SPECIFIED IN THE ORDER. IT IS TO BE RETURNED TO TYCO ELECTRONICS CORPORATION IF NOT SO.</small>		DWN: H. HUANG 19NOV2012 CHK: S. XI 19NOV2012 APVD: S. XI 19NOV2012	NAME: TE Connectivity Harrisburg, PA 17105-3608
DIMENSIONS: mm TOLERANCES UNLESS OTHERWISE SPECIFIED: 0 PLC ± 1 PLC ± 2 PLC ± 3 PLC ± 4 PLC ± ANGLES ± FINISH	PRODUCT SPEC APPLICATION SPEC SIZE: A1 CAGE CODE: 00779 DRAWING NO: 2266403	RESTRICTED TO: - SCALE: 1:2 SHEET: 4 OF 4 REV: C	CUSTOMER ACCESSIBLE PRODUCTION DRAWING