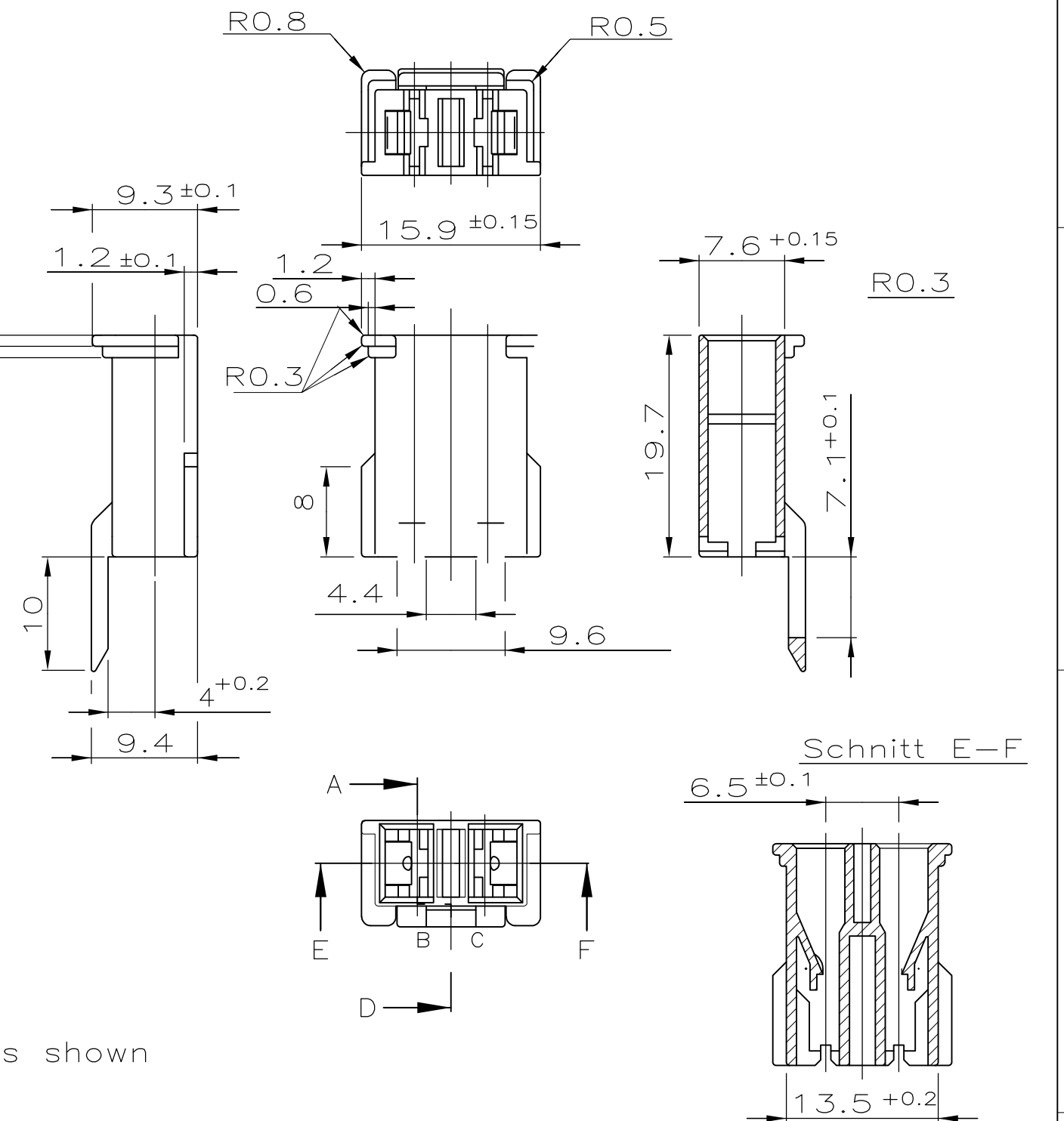
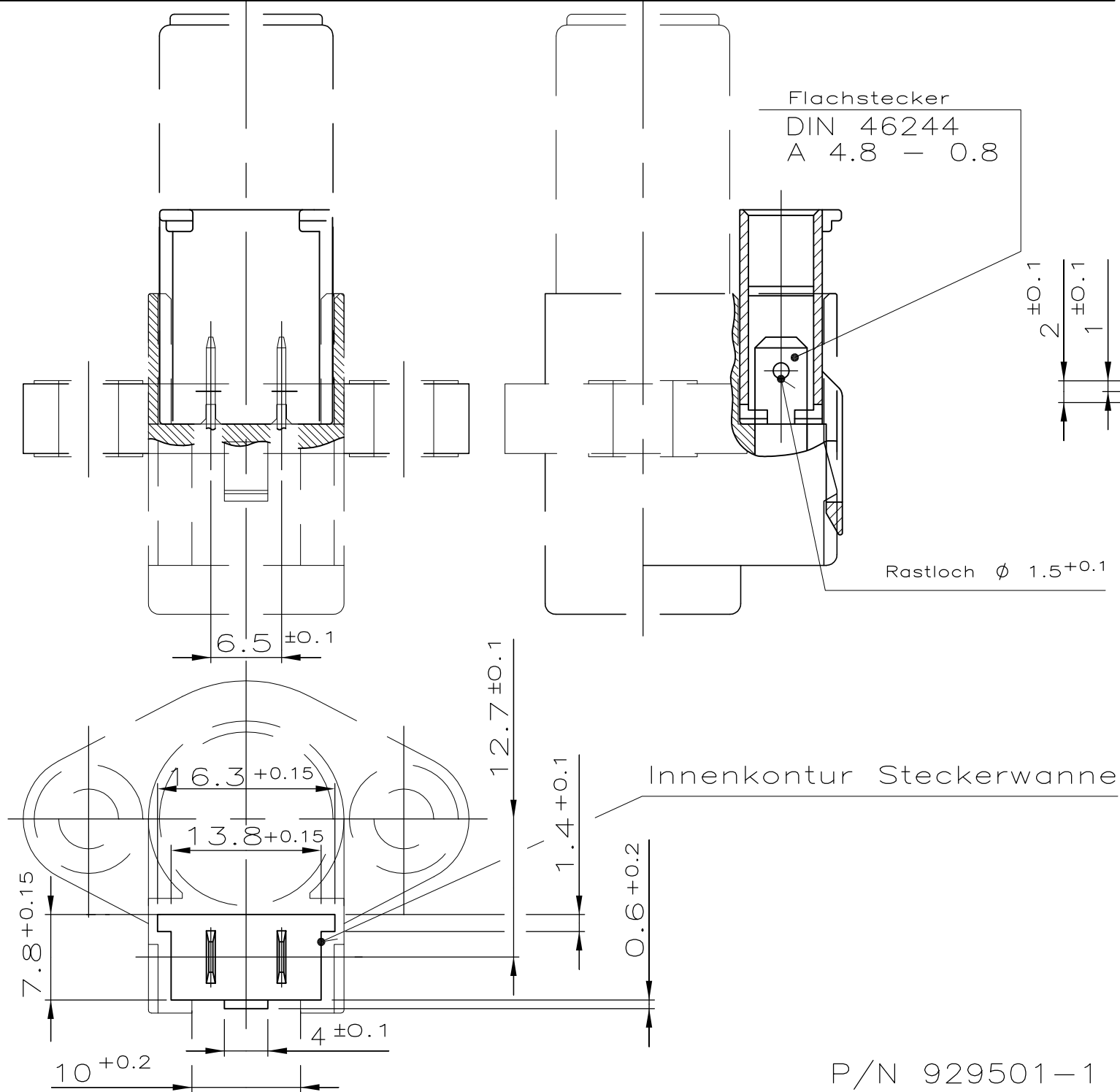


THIS DRAWING IS UNPUBLISHED. RELEASED FOR PUBLICATION - , 1987.
 © COPYRIGHT 1987 BY TYCO ELECTRONICS CORPORATION. ALL INTERNATIONAL RIGHTS RESERVED.

LOC	DIST	P	LTR	DESCRIPTION	DATE	DWN	APVD
-	-		A1	Note 1 updated	17SEP2009	PKS	RRP



P/N 929501-1 as shown

Bemerkungen

- Funktion gewährleistet mit
 TE "FASTON"-Steckhülse 63850-1
 Drahtgrößenbereich 0.5 - 1.5 mm²
 Isolations φ 2.3 - 3.3 mm
 Anschlagwerkzeug muß auf die
 PTFE isolierten Leitungen (ZF-Norm: ZFB 968
 und TL 6145-11) abgestimmt werden

THIS DRAWING IS A CONTROLLED DOCUMENT.		DWN H. BOUDA 17 JUL 87	Tyco Electronics Tyco Electronics DEUTSCHLAND GmbH Langen b.Ffm., West Germany	
DIMENSIONS: mm		CHK J. RYLL 17 JUL 87	NAME 2 pol. PIP POD Gehaeuse (4.8 SteckhuelSEN)	
TOLERANCES UNLESS OTHERWISE SPECIFIED: ± 0.2		APVD -	PRODUCT SPEC -	
0 PLC ± - 1 PLC ± - 2 PLC ± - 3 PLC ± - 4 PLC ± - ANGLES ± 1°		APPLICATION SPEC -	SIZE A3	CAGE CODE 00779
MATERIAL ZYTEL E103 HSL		FINISH NATURAL	DRAWING NO G-929501	RESTRICTED TO -
CUSTOMER DRAWING			SCALE 2:1	SHEET 1 von 1 OF 1
			REV A1	