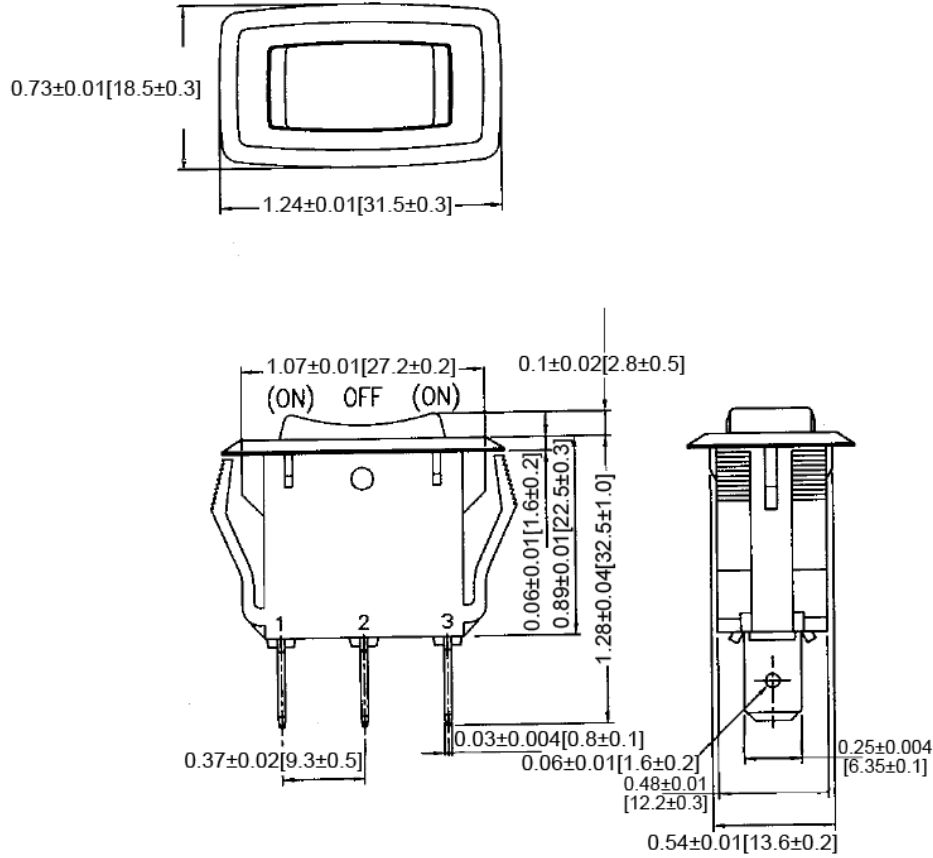
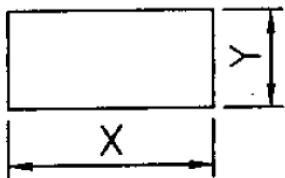


Mechanical Dimensions: Inches [mm]

Tolerances ± 0.012 [0.3] Unless Otherwise Specified



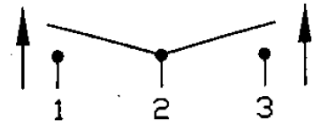
Mounting Hole



| Thickness | X | Y |
|----------------|----------------|----------------|
| 0.1 [0.75~3.0] | 1.0 [27.6-0.1] | 0.5 [13.8+0.1] |
| 0.1 [3.0~4.0] | 1.0 [27.8-0.1] | 0.5 [13.8+0.1] |
| 0.1 [4.0~5.0] | 1.1 [28.0-0.1] | 0.5 [13.8+0.1] |

Circuit Diagram

3P SPDT (ON)-OFF-(ON)



Electrical Specifications

| | |
|-----------------------|------------------------|
| Rating | 16A 12V DC, 10A 28V DC |
| Contact Resistance | 50m ohm Max |
| Insulation Resistance | DC 500V 100M ohm Min |
| Dielectric Strength | AC 1500V 1minute |
| Operation Temperature | -20°C~85°C |

Material Specifications

| | |
|----------|------------------|
| Frame | Nylon#66, Black. |
| Actuator | Nylon#66, Black. |

| Rev | Date of issue | Revision Notes | Designed | Approved |
|-----|---------------|-----------------|----------|----------|
| B | 02-26-2020 | Initial Drawing | RC | OF |