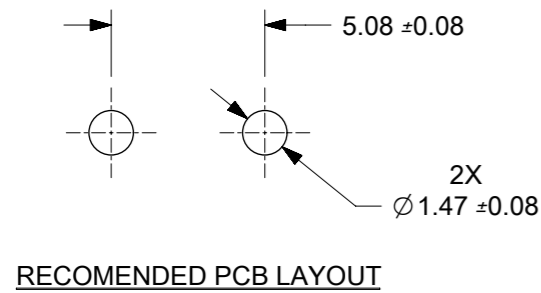


- NOTES:
1. MATERIALS
TERMINAL: BRASS C26000
 2. FINISHS
TERMINAL: MINIMUM 1.25µM MATTE TIN OVER NICKEL
 3. PRODUCT SPECIFICATION: PS-36662-001
 4. PACKAGING SPECIFICATION: PK-36662-001
 5. MATES WITH: 36662-0005
 6. PART TO MEET SOLDERABILITY SPEC SMES-152
- △ PARTING OFF SURFACE (UNPLATED)



THIS DRAWING CONTAINS INFORMATION THAT IS PROPRIETARY TO MOLEX ELECTRONIC TECHNOLOGIES, LLC AND SHOULD NOT BE USED WITHOUT WRITTEN PERMISSION												
QUALITY SYMBOLS △A = 0 △B = 0 △C = 0 ▽ = 0 △D = 0 ⊠ = 0 ■ = 0 ▽ = 0	ADDED NOTE #7 EC NO: 167599 DRWN: PKH CHKD: GKARUNAKARAN REV APPR: GCMPRASAD	GENERAL TOLERANCES (UNLESS SPECIFIED)		DIMENSION UNITS	SCALE							
		MM	INCH	MM	4:1							
		4 PLACES ±	±	DRWN BY	DATE	STAMP-PART;BRASS; 0.250" EXTENDED TAB APC P/N #701-0158-Z						
		3 PLACES ±	±	DINESH	2005/09/27							
		2 PLACES ±	0.15 ±	CHK'D BY	DATE							
		1 PLACES ±	0.25 ±	KPRASAD	2005/09/27	PRODUCT CUSTOMER DRAWING						
		0 PLACES ±	±	APPR BY	DATE							
		ANGULAR TOL = 2.0		GJLOWE	2005/09/27	SERIES	MATERIAL NUMBER	CUSTOMER				
		DRAFT WHERE APPLICABLE MUST REMAIN WITHIN DIMENSIONS		DRAWING SIZE	THIRD ANGLE PROJECTION	36662	36662-0004	GENERAL MARKET				
				A3		DOCUMENT NUMBER		DOC TYPE	DOC PART	SHEET NUMBER		
				SD-36662-004		PSD	001	1 OF 1				