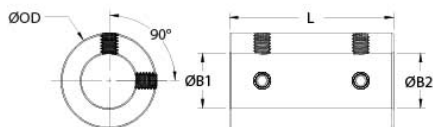




MSCX-25-25-F


Ruland MSCX-25-25-F, 25mm x 25mm Rigid Coupling, Black Oxide Steel, Set Screw Style, 45mm OD, 75mm Length



Description

Ruland MSCX-25-25-F is a set screw rigid coupling with 25mm x 25mm bores, 45mm OD, and 75mm length. It has precision honed bores to ensure they are collinear and do not introduce misalignment or vibration into the system making it suitable for high precision servo applications as well as shaft to shaft connections. Forged screws test beyond DIN 912 12.9 standards to ensure maximum holding power. Tightly controlled bore tolerance of +.050mm/+0.012mm is maintained. MSCX-25-25-F is made from 1215 lead-free steel with a proprietary black oxide finish that produces a fine glossy finish while increasing holding power and resisting corrosion. It is machined from solid bar stock that is sourced exclusively from North American mills and is RoHS3 and REACH compliant. MSCX-25-25-F is manufactured in our Marlborough, MA factory under strict controls using proprietary processes.

Product Specifications

Bore (B1)	25 mm	Small Bore (B2)	25 mm
B1 Max Shaft Penetration	37.5 mm	B2 Max Shaft Penetration	37.5 mm
Outer Diameter (OD)	45 mm	Bore Tolerance	+0.050 mm / +0.012 mm
Length (L)	75 mm	Recommended Shaft Tolerance	+0.000 mm / -0.013 mm
Forged Set Screw	M8	Screw Material	Alloy Steel
Hex Wrench Size	4.0 mm	Screw Finish	Black Oxide
Seating Torque	17 Nm	Number of Screws	4 ea
Rated Torque	Rating Coming Soon	Moment of Inertia	$2.119 \times 10^{-4} \text{ kg-m}^2$
Maximum Speed	4,000 RPM	Full Bearing Support Required?	No
Precision Honed Bores?	Yes	Zero-Backlash?	Yes
Material Specification	1215 Carbon Steel Bar	Temperature	-40°F to 350°F (-40°C to 176°C)
Finish Specification	Hot Process Black Oxide, Impregnated with Naphthenic Oil, Centrifugally Dried	Manufacturer	Ruland Manufacturing
Country of Origin	USA	Weight (lbs)	1.408500
UPC	634529076484	Tariff Code	8483.60.8000
UNSPC	31163009		
Note 1	Performance ratings are for guidance only. The user must determine suitability for a particular application.		
Prop 65	 WARNING This product can expose you to the chemical Ethylene Thiourea, known to the State of California to cause cancer and birth defects or other reproductive harm. For more information go to www.P65Warnings.ca.gov .		

Installation Instructions

1. Align the MSCX-25-25-F set screw rigid coupling on the two shafts to be connected. There should be no misalignment.
2. Tighten the set screws in two stages, starting with the inside set screws. Using a 4.0 mm torque wrench, tighten the inside set screws to 8.5 Nm which is half the recommended seating torque. Repeat for the outside set screws, again tightening to half of the recommended seating torque.
3. Tighten the screws to the full recommended seating torque of 17 Nm following the same pattern, starting with the inside set screws first.