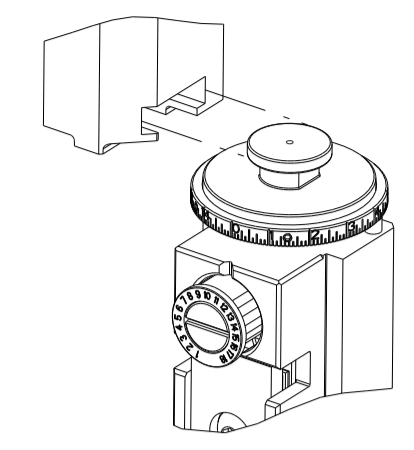


| PART NUMBER | REVISION | DESCRIPTION | FEED TYPE |
|-------------|----------|----------------------------------|------------|
| 2151254-1 | H | FINE CRIMP HEIGHT ADJUST | MECHANICAL |
| 2151254-2 | J | FINE CRIMP HEIGHT ADJUST | PNEUMATIC |
| 7-2151254-1 | H | MECHANICAL AND CRIMP TOOLING KIT | MECHANICAL |
| 7-2151254-2 | J | PNEUMATIC AND CRIMP TOOLING KIT | PNEUMATIC |
| 7-2151254-7 | H | CRIMP TOOLING KIT | - |

ATLANTIC VERSION TERMINATOR INTERFACE ADAPTER



| APPLICATOR DATA | | |
|-----------------|----------------|------|
| CRIMP | SIZE | TYPE |
| WIRE | 4.06 mm [.160] | F |
| INSUL | 4.83 mm [.190] | OV |

APPLICATOR INSTRUCTIONS 408-35042

| TERMINAL DATA: TE TERMINAL | | TE CRIMP SPECIFICATION | |
|---|-------------|------------------------------|-------------|
| TERMINAL NAME: AMP MCP4.8K FLATCONTACT ASSEMBLY | | | |
| WIRE STRIP LENGTH | | INSULATION DIAMETER RANGE | |
| 5.10-5.70 mm [.201-.224 IN] | | Ø3.40-4.30 mm [.134-.169 IN] | |
| TERMINAL APPLICATION SPECIFICATION | 114-18388 | - | - |
| TERMINALS APPLIED | | | |
| TE TERMINAL | TE TERMINAL | TE TERMINAL | TE TERMINAL |
| 1241408-1 | 1-1241408-3 | 2-1241408-3 | |

| TERMINAL DATA: TE TERMINAL | | TE CRIMP SPECIFICATION | |
|---|-------------|------------------------------|-------------|
| TERMINAL NAME: AMP MCP4.8K FLATCONTACT ASSEMBLY | | | |
| WIRE STRIP LENGTH | | INSULATION DIAMETER RANGE | |
| 5.10-5.70 mm [.201-.224 IN] | | Ø4.00-4.30 mm [.157-.169 IN] | |
| TERMINAL APPLICATION SPECIFICATION | 114-18388 | - | - |
| TERMINALS APPLIED | | | |
| TE TERMINAL | TE TERMINAL | TE TERMINAL | TE TERMINAL |
| 1-2177995-3 | 1-2333552-3 | | |

| TERMINAL DATA: TE TERMINAL | | TE CRIMP SPECIFICATION | |
|---|-------------|------------------------------|-------------|
| TERMINAL NAME: AMP MCP4.8K FLATCONTACT ASSEMBLY | | | |
| WIRE STRIP LENGTH | | INSULATION DIAMETER RANGE | |
| 5.10-5.70 mm [.201-.224 IN] | | Ø4.00-4.30 mm [.157-.169 IN] | |
| TERMINAL APPLICATION SPECIFICATION | | - | - |
| TERMINALS APPLIED | | | |
| TE TERMINAL | TE TERMINAL | TE TERMINAL | TE TERMINAL |
| 1241408-1 | | | |

| WIRE SIZE | CRIMP HEIGHT mm [INCH] | CRIMP HEIGHT REFERENCE SETTING |
|-----------|----------------------------|--------------------------------|
| 6.00mm2 | 2.58+/-0.05 [.102+/- .002] | 5.0 |
| 4.00mm2 | 2.06+/-0.05 [.081+/- .002] | 10.7 |

| WIRE SIZE | CRIMP HEIGHT mm [INCH] | CRIMP HEIGHT REFERENCE SETTING |
|-----------|----------------------------|--------------------------------|
| 6.00mm2 | 2.58+/-0.05 [.102+/- .002] | 5.0 |

| WIRE SIZE | CRIMP HEIGHT mm [INCH] | CRIMP HEIGHT REFERENCE SETTING |
|-------------|----------------------------|--------------------------------|
| 2 x 2.50mm2 | 2.32+/-0.05 [.091+/- .002] | 7.9 |

- RECOMMENDED SPARE PARTS
- REFER TO SUPPLIED INSTRUCTION SHEET FOR CLEANING, LUBRICATION AND STORAGE OF APPLICATOR.
- APPLY PART NUMBER 2-23419-6 LOCTITE TO THREADS OF ITEM 242.
- CRIMP HEIGHT REFERENCE SETTING WAS THE SETTING USED WHEN THE APPLICATOR WAS QUALIFIED AT THE FACTORY. ADJUSTMENT MAY BE NECESSARY WHEN RUNNING APPLICATOR IN THE FIELD.
- UNLESS SPECIFIED OTHERWISE TORQUE VALUES SHALL BE USED PER DOCUMENT 101-35000.
- THIS CRIMP PARAMETER IS PROVIDED TO MEET A CUSTOM AND UNIQUE CUSTOMER REQUIREMENT. IT HAS BEEN EVALUATED AND IS CONDITIONALLY SPECIFIED BY TE CONNECTIVITY. THIS CUSTOMIZED CRIMP PARAMETER IS NOT LISTED AS AN APPROVED APPLICATION WITHIN A TE CONNECTIVITY APPLICATION SPECIFICATION; HOWEVER, IT HAS BEEN VALIDATED ACCORDING TO **TE CONNECTIVITY SPECIFICATIONS 109-18079 (TEST GROUP 1) AND 114-18022. TE CONNECTIVITY EXPRESSLY DISCLAIMS ANY AND ALL WARRANTIES THAT THE PRODUCT WILL PERFORM SIMILARLY TO VALIDATED AND APPROVED APPLICATIONS, AS STATED WITHIN TE CONNECTIVITY APPLICATION SPECIFICATIONS, INCLUDING BUT NOT LIMITED TO IMPLIED WARRANTIES OF MERCHANTABILITY OR FITNESS FOR PARTICULAR PURPOSE.** AS SUCH, IT IS HIGHLY RECOMMENDED THAT THE CUSTOMER PERFORM FURTHER DETAILED EVALUATION TO ASSESS PRODUCT PERFORMANCE IN THE SPECIFIC APPLICATION.

***WARNING**
ON INSTALLATION, SET WIRE DISC TO CRIMP HEIGHT REFERENCE SETTING FOR LARGEST WIRE SIZE. CRIMP HEIGHT REFERENCE SETTINGS GREATER THAN THE VALUE SHOWN MAY CAUSE DAMAGE TO THE CRIMP TOOLING, REFER TO THE INSTRUCTION SHEET FOR PROPER SETUP AND ADJUSTMENTS.

ATLANTIC VERSION
Shown on sheets 1 of 4 & 2 of 4
(Pacific version shown on sheets 3 of 4 & 4 of 4)

| LOC | DIST | REVISIONS | | | | | |
|-----|------|-----------|-----|---------------|-----------|-----|------|
| A | 66 | P | LTN | DESCRIPTION | DATE | OWN | APVD |
| | | H | | ECR-20-002159 | 14FEB2020 | FZ | RK |
| | | J | | ECR-20-013419 | 21SEP2020 | JAH | RK |
| | | J1 | | ECR-22-162334 | 30DEC2022 | FZ | JAH |
| | | J2 | | ECR-23-169547 | 17MAR2023 | FZ | JAH |

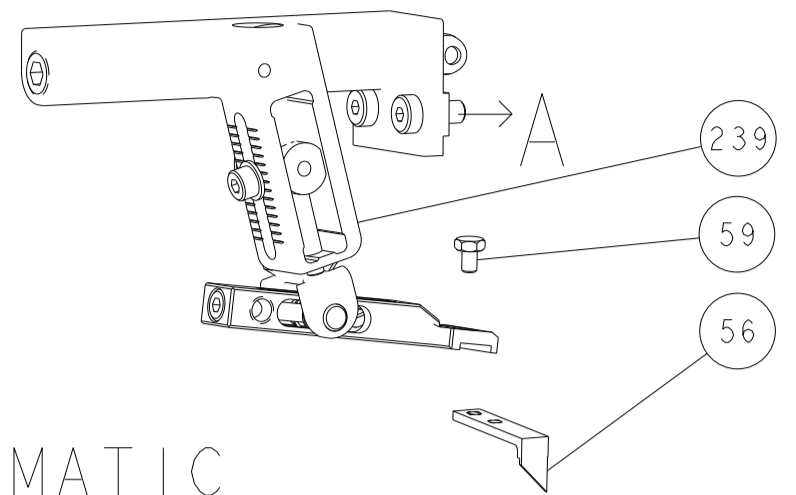
| | | | | | | | | |
|---|-----|-----|-----|-----|-------------|-------------------------------------|-------------------------------------|---------|
| - | 1 | - | 1 | - | 2119641-1 | FEED CAM, AIR FEED | 248 | |
| - | 1 | 1 | 1 | 1 | 2119082-9 | CAM, SNAIL, INSULATION ADJUSTMENT | 244 | |
| - | 1 | 1 | 1 | 1 | 2079764-1 | WASHER, WAVE SPRING, CREST-TO-CREST | 243 | |
| - | 1 | 1 | 1 | 1 | 2119083-1 | RETAINER, INSULATION DIAL | 242 | |
| - | 1 | 1 | 1 | 1 | 7-18023-7 | SCR, SKT HD CAP M3 X 4.0 | 241 | |
| - | - | 1 | - | 1 | 2119580-1 | MECHANICAL FEED ASSEMBLY | 239 | |
| - | 1 | - | 1 | - | 2844940-1 | AIR FEED MODULE | 238 | |
| - | REF | REF | REF | REF | 994970-2 | COUNTER, MAGNETIC | 164 | |
| - | 1 | 1 | 1 | 1 | 1-18028-2 | WASHER, FLAT, REG M4 | 119 | |
| - | 1 | 1 | 1 | 1 | 2844908-1 | SCREW, LOCKING | 99 | |
| - | 1 | 1 | 1 | 1 | 2844907-1 | POST, LOCKING | 98 | |
| - | 1 | 1 | 1 | 1 | 455888-4 | SPACER, CRIMPER | 82 | |
| - | 1 | 1 | 1 | 1 | 1803607-3 | DOCUMENTATION PACKAGE | 71 | |
| - | 1 | 1 | 1 | 1 | 2119740-1 | TAG IDENTIFICATION | 67 | |
| - | 2 | 2 | 2 | 2 | 2168078-1 | SCREW, DRIVE, RH, RoHS, 2 x .188 | 66 | |
| - | 1 | 1 | 1 | 1 | 2168083-2 | SCR, SKT HD CAP, RoHS, M4 X 8.0 | 60 | |
| - | 1 | 1 | 1 | 1 | 5-18022-5 | SCR, HEX HD CAP, M4 X 6.0 | 59 | |
| - | 1 | 1 | 1 | 1 | 1338685-1 | PAWL, FEED | 56 | |
| - | 4 | 4 | 4 | 4 | 2168083-3 | SCR, SKT HD CAP, RoHS, M4 X 12.0 | 54 | |
| - | 2 | 2 | 2 | 2 | 1-2168083-0 | SCR, SKT HD CAP, RoHS, M4 X 10 | 53 | |
| - | 1 | 1 | 1 | 1 | 1803382-2 | HOLD DOWN, SPRING LOADED | 50 | |
| - | 1 | 2 | 1 | 2 | 18023-9 | SCR, SKT HD CAP M4 X 6.0 | 49 | |
| - | - | 1 | - | 1 | 2119652-1 | FEED CAM, PRE FEED | 48 | |
| - | - | 1 | - | 1 | 2119653-1 | FEED CAM, POST FEED | 47 | |
| - | 1 | 1 | 1 | 1 | 1803583-9 | APPLICATOR BASIC ASSEMBLY, SF | 46 | |
| - | 1 | 1 | 1 | 1 | 1803515-1 | RAM ASSEMBLY, SF ATLANTIC | 44 | |
| - | 1 | 1 | 1 | 1 | 1803602-1 | SCR, BHSC, RoHS (M8 X 25) | 41 | |
| - | 1 | 1 | 1 | 1 | 1-1752356-2 | SUPPORT, TERMINAL | 34 | |
| - | 2 | 2 | 2 | 2 | 2079383-5 | SCR, BHSC, RoHS (M4 X 20) | 33 | |
| - | 2 | 2 | 2 | 2 | 3-2844962-0 | SPACER, CYLINDRICAL, STRIP GUIDE | 30 | |
| - | 1 | 1 | 1 | 1 | 2844992-2 | ASSEMBLY, STRIP GUIDE | 29 | |
| - | 1 | 1 | 1 | 1 | 1-455888-0 | SPACER, CRIMPER | 28 | |
| - | 1 | 1 | 1 | 1 | 1320928-2 | STRIP GUIDE | 24 | |
| - | 1 | 1 | 1 | 1 | 2168083-2 | SCR, SKT HD CAP, RoHS, M4 X 8.0 | 21 | |
| - | 1 | 1 | 1 | 1 | 1-18028-2 | WASHER, FLAT, REG M4 | 20 | |
| - | 1 | 1 | 1 | 1 | 2119533-1 | STRIPPER, SIDE FEED | 19 | |
| - | 1 | 1 | 1 | 1 | 2119806-1 | INSERT, SHEAR | 13 | |
| - | 1 | 1 | 1 | 1 | 3-22280-3 | SPRING, COMPRESSION | 12 | |
| - | 1 | 1 | 1 | 1 | 1-356885-4 | STOP, SHEAR | 11 | |
| - | 1 | 1 | 1 | 1 | 2119805-1 | SHEAR HOLDER, FRONT | 10 | |
| - | 1 | 1 | 1 | 1 | 454276-5 | FLOATING SHEAR, FRONT | 9 | |
| - | 1 | 2 | 2 | 1 | 1 | 8-1633138-3 | ANVIL, COMBINATION | 8 |
| - | 1 | 1 | 1 | 1 | 2119757-8 | DEPRESSOR, SHEAR | 5 | |
| - | 1 | 1 | 1 | 1 | 2-238011-6 | BLOCK, CRIMPER SPACER | 4 | |
| - | 1 | 2 | 2 | 1 | 1 | 9-1633963-5 | CRIMPER, INSULATION OVERLAP PREMIUM | 3 |
| - | 1 | 2 | 2 | 1 | 1 | 4-657555-0 | CRIMPER, WIRE PREMIUM | 1 |
| - | 77 | -72 | -71 | -2 | -1 | PART NO | DESCRIPTION | ITEM NO |

| | | | | | | | | | | | |
|-------------|---------|--|---------|----------------|---------|----------------|----------|-----------------|----------|------------------|-----------------------|
| DIMENSIONS: | | TOLERANCES UNLESS OTHERWISE SPECIFIED: | | OWN: 25AUG2011 | | CHK: 26AUG2011 | | APVD: 26AUG2011 | | NAME: I. ELBIN | |
| mm | 0 PLC ± | 1 PLC ± | 2 PLC ± | 3 PLC ± | 4 PLC ± | ANGLES ± | FINISH ± | APPLICATOR SPEC | SIZE: A1 | CAGE CODE: 00779 | DRAWING NO: C=2151254 |
| MATERIAL: | | FINISH: | | WEIGHT: | | SCALE: 1:2 | | SHEET: 1 OF 4 | | REV: J2 | |

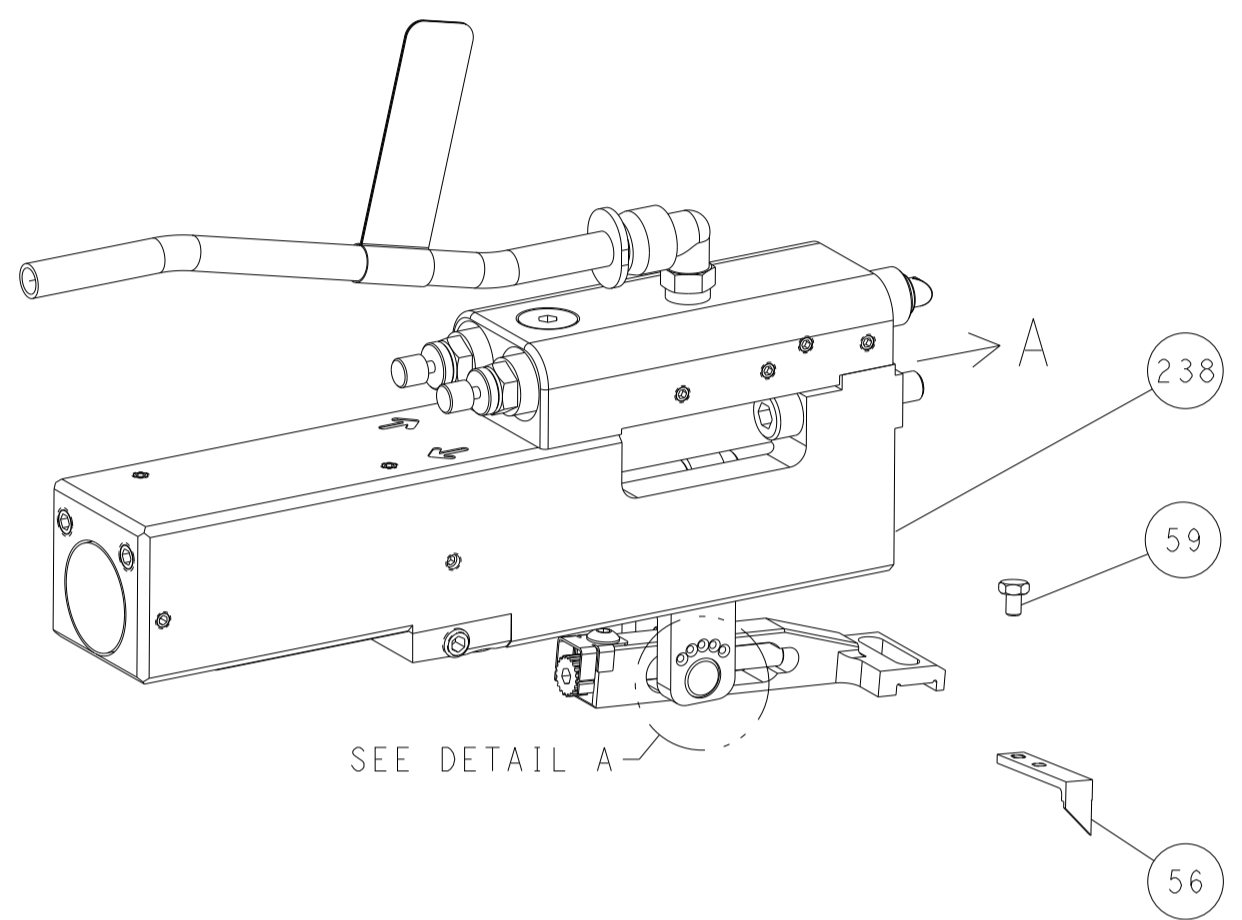
Customer Accessible Production Drawing

| LOC | DIST | REVISIONS | | | | | |
|-----|------|-----------|-----|-------------|------|-----|------|
| A | 66 | P | LTN | DESCRIPTION | DATE | DWN | APVD |
| | | - | | SEE SHEET 1 | | | |

FEED TYPE MECHANICAL



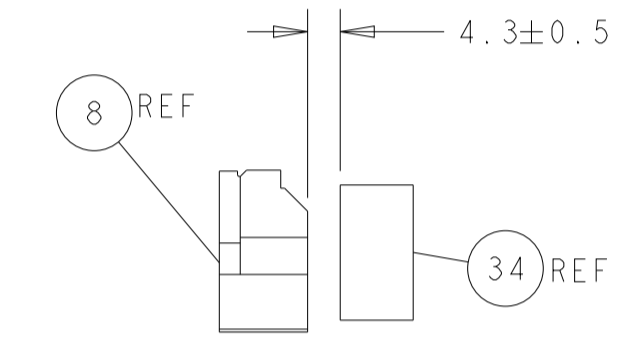
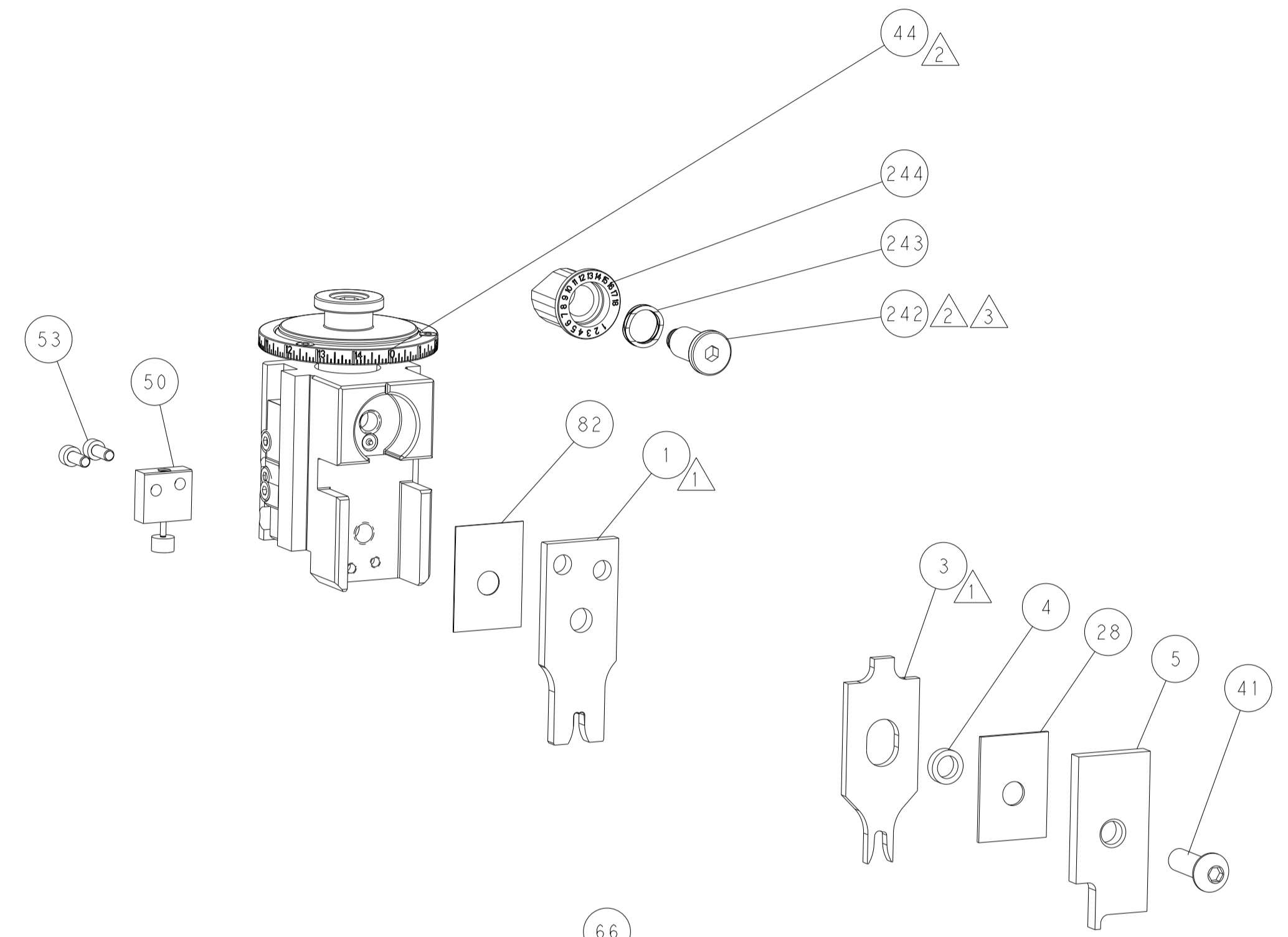
PNEUMATIC



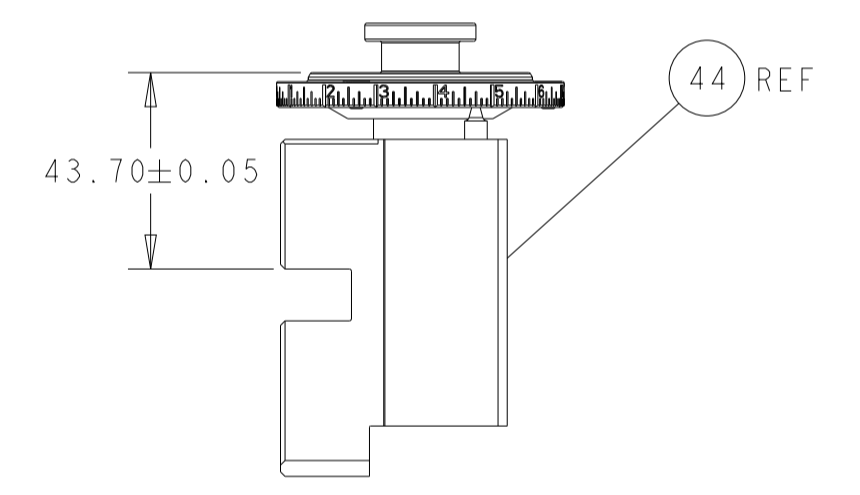
FEED SPRING SETTING POSITION (SHOWN FROM REAR SIDE)



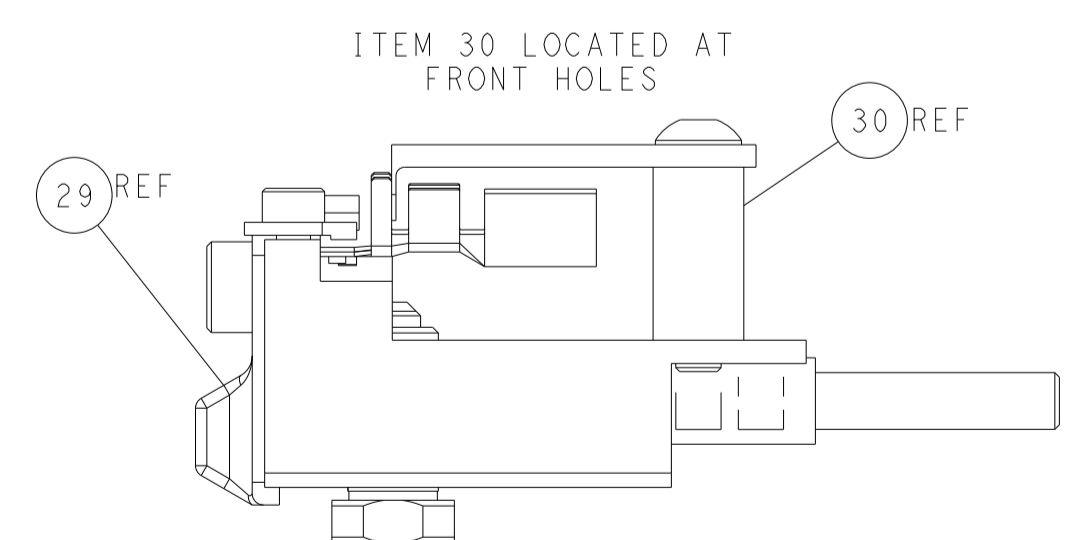
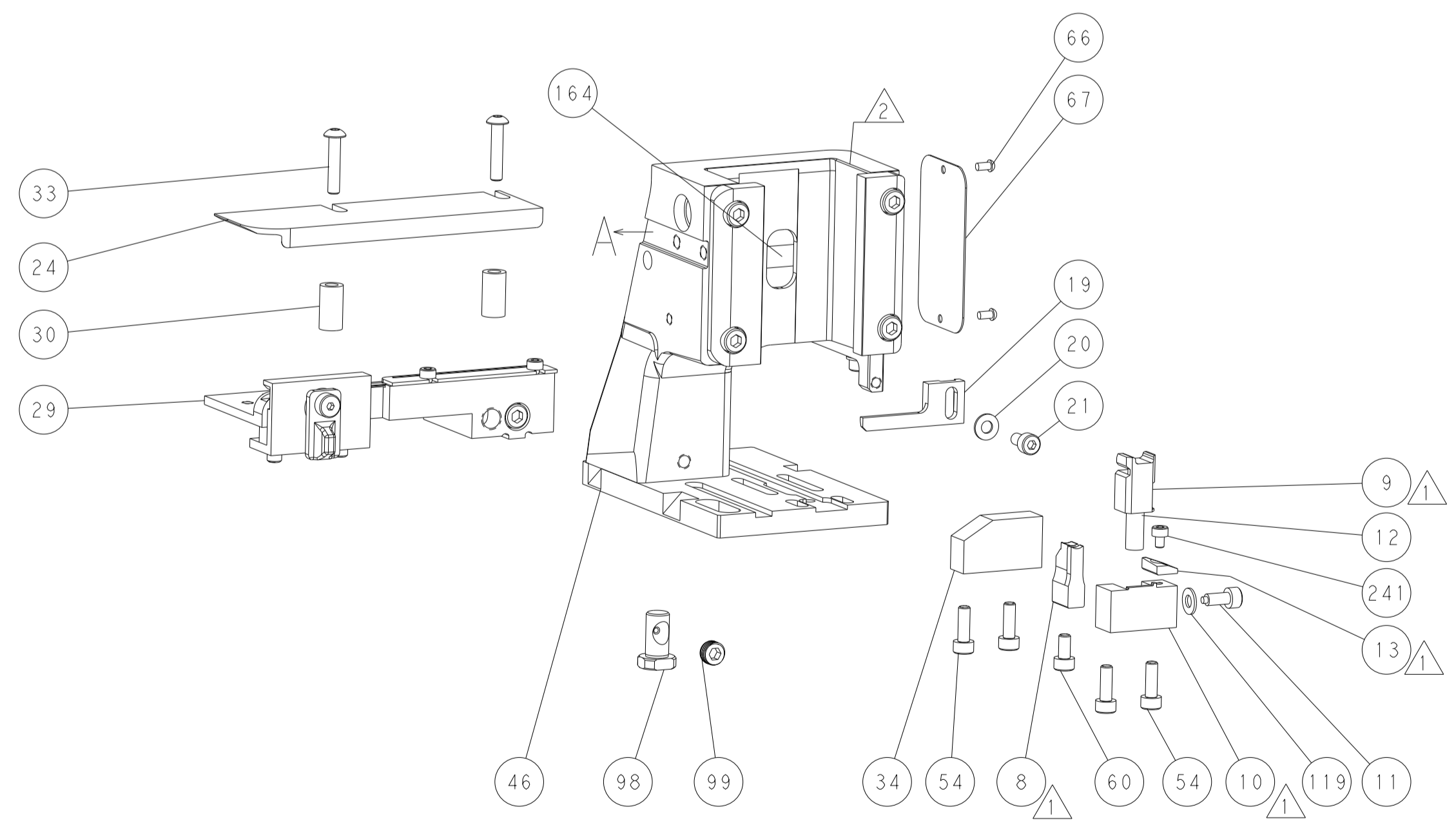
DETAIL A



TERMINAL SUPPORT LOCATION

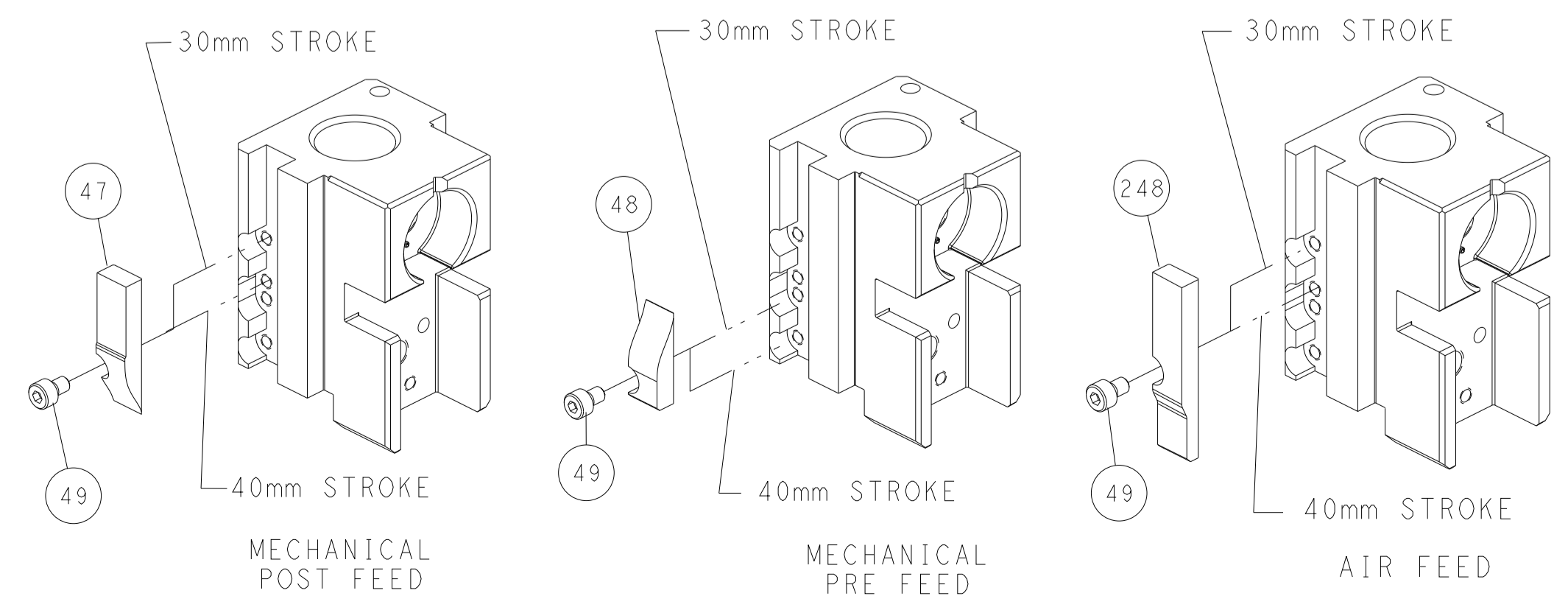


RAM SET-UP



FEED TRACK POSITION GUIDE BY INSULATION BARREL

CAM POSITIONS

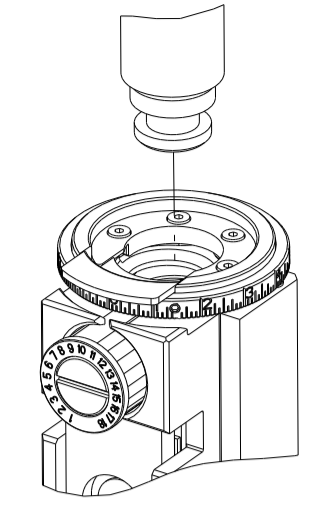


ATLANTIC VERSION
 Shown on sheets 1 of 4 & 2 of 4
 (Pacific version shown on sheets 3 of 4 & 4 of 4)

| | | | |
|--|--|--|---|
| <small>THIS DRAWING IS UNPUBLISHED. RELEASED FOR PUBLICATION BY TYCO ELECTRONICS CORPORATION. ALL RIGHTS RESERVED.</small> | | DWN: HOFFNER 25AUG2011 CHK: TELBIN 26AUG2011 APVD: TELBIN 26AUG2011 | TE Connectivity Harrisburg, PA 17105-3608 |
| DIMENSIONS: mm TOLERANCES UNLESS OTHERWISE SPECIFIED: 0 PLC ± 1 PLC ± 2 PLC ± 3 PLC ± 4 PLC ± ANGLES FINISH ± | | NAME: Ocean Side Feed Applicator APPLICATION SPEC: - WEIGHT: - SCALE: 1:2 | SIZE: A1 CAGE CODE: 00779 DRAWING NO: 2151254 SHEET 2 OF 4 REV J2 |
| MATERIAL: - | | RESTRICTED TO: - Customer Accessible Production Drawing | |

| 8 | 7 | 6 | 5 | 4 | 3 | 2 | 1 |
|---|----------|--------------------------|------------|----|---|---|---|
| THIS DRAWING IS UNPUBLISHED. | | RELEASED FOR PUBLICATION | | 20 | | | |
| COPYRIGHT © BY TYCO ELECTRONICS CORPORATION. ALL RIGHTS RESERVED. | | | | | | | |
| PART NUMBER | REVISION | DESCRIPTION | FEED TYPE | | | | |
| 2-2151254-1 | H | FINE CRIMP HEIGHT ADJUST | MECHANICAL | | | | |
| 2-2151254-2 | J | FINE CRIMP HEIGHT ADJUST | PNEUMATIC | | | | |
| 7-2151254-7 | H | CRIMP TOOLING KIT | - | | | | |

PACIFIC VERSION TERMINATOR INTERFACE ADAPTER



| APPLICATOR DATA | | |
|--------------------------------------|----------------|------|
| CRIMP | SIZE | TYPE |
| WIRE | 4.06 mm [.160] | F |
| INSUL | 4.83 mm [.190] | OV |
| APPLICATOR INSTRUCTIONS 408-35042 | | |

| TERMINAL DATA: TE TERMINAL | | TE CRIMP SPECIFICATION | |
|---|-------------|------------------------------|-------------|
| TERMINAL NAME: AMP MCP4.8K FLATCONTACT ASSEMBLY | | | |
| WIRE STRIP LENGTH | | INSULATION DIAMETER RANGE | |
| 5.10-5.70 mm [.201-.224 IN] | | Ø3.40-4.30 mm [.134-.169 IN] | |
| TERMINAL APPLICATION SPECIFICATION | 114-18388 | - | - |
| TERMINALS APPLIED | | | |
| TE TERMINAL | TE TERMINAL | TE TERMINAL | TE TERMINAL |
| 1241408-1 | 1-1241408-3 | 2-1241408-3 | |

| TERMINAL DATA: TE TERMINAL | | TE CRIMP SPECIFICATION | |
|---|-------------|------------------------------|-------------|
| TERMINAL NAME: AMP MCP4.8K FLATCONTACT ASSEMBLY | | | |
| WIRE STRIP LENGTH | | INSULATION DIAMETER RANGE | |
| 5.10-5.70 mm [.201-.224 IN] | | Ø4.00-4.30 mm [.157-.169 IN] | |
| TERMINAL APPLICATION SPECIFICATION | 114-18388 | - | - |
| TERMINALS APPLIED | | | |
| TE TERMINAL | TE TERMINAL | TE TERMINAL | TE TERMINAL |
| 1-2177995-3 | 1-2333552-3 | | |

| TERMINAL DATA: TE TERMINAL | | TE CRIMP SPECIFICATION | |
|---|-------------|------------------------------|-------------|
| TERMINAL NAME: AMP MCP4.8K FLATCONTACT ASSEMBLY | | | |
| WIRE STRIP LENGTH | | INSULATION DIAMETER RANGE | |
| 5.10-5.70 mm [.201-.224 IN] | | Ø4.00-4.30 mm [.157-.169 IN] | |
| TERMINAL APPLICATION SPECIFICATION | 114-18388 | - | - |
| TERMINALS APPLIED | | | |
| TE TERMINAL | TE TERMINAL | TE TERMINAL | TE TERMINAL |
| 1241408-1 | | | |

| WIRE SIZE | CRIMP HEIGHT mm [INCH] | CRIMP HEIGHT REFERENCE SETTING |
|-----------|----------------------------|--------------------------------|
| 6.00mm2 | 2.58+/-0.05 [.102+/- .002] | 5.0 |
| 4.00mm2 | 2.06+/-0.05 [.081+/- .002] | 10.7 |

| WIRE SIZE | CRIMP HEIGHT mm [INCH] | CRIMP HEIGHT REFERENCE SETTING |
|-----------|----------------------------|--------------------------------|
| 6.00mm2 | 2.58+/-0.05 [.102+/- .002] | 5.0 |

| WIRE SIZE | CRIMP HEIGHT mm [INCH] | CRIMP HEIGHT REFERENCE SETTING |
|-------------|----------------------------|--------------------------------|
| 2 x 2.50mm2 | 2.32+/-0.05 [.091+/- .002] | 7.9 |

- △ RECOMMENDED SPARE PARTS
- △ REFER TO SUPPLIED INSTRUCTION SHEET FOR CLEANING, LUBRICATION AND STORAGE OF APPLICATOR.
- △ APPLY PART NUMBER 2-23419-6 LOCTITE TO THREADS OF ITEM 242.
- △ CRIMP HEIGHT REFERENCE SETTING WAS THE SETTING USED WHEN THE APPLICATOR WAS QUALIFIED AT THE FACTORY. ADJUSTMENT MAY BE NECESSARY WHEN RUNNING APPLICATOR IN THE FIELD.
- 5. UNLESS SPECIFIED OTHERWISE TORQUE VALUES SHALL BE USED PER DOCUMENT 101-35000.
- △ THIS CRIMP PARAMETER IS PROVIDED TO MEET A CUSTOM AND UNIQUE CUSTOMER REQUIREMENT. IT HAS BEEN EVALUATED AND IS CONDITIONALLY SPECIFIED BY TE CONNECTIVITY. THIS CUSTOMIZED CRIMP PARAMETER IS NOT LISTED AS AN APPROVED APPLICATION WITHIN A TE CONNECTIVITY APPLICATION SPECIFICATION; HOWEVER, IT HAS BEEN VALIDATED ACCORDING TO **TE CONNECTIVITY SPECIFICATIONS 109-18079 (TEST GROUP 1) AND 114-18022. TE CONNECTIVITY EXPRESSLY DISCLAIMS ANY AND ALL WARRANTIES THAT THE PRODUCT WILL PERFORM SIMILARLY TO VALIDATED AND APPROVED APPLICATIONS, AS STATED WITHIN TE CONNECTIVITY APPLICATION SPECIFICATIONS, INCLUDING BUT NOT LIMITED TO IMPLIED WARRANTIES OF MERCHANTABILITY OR FITNESS FOR PARTICULAR PURPOSE.** AS SUCH, IT IS HIGHLY RECOMMENDED THAT THE CUSTOMER PERFORM FURTHER DETAILED EVALUATION TO ASSESS PRODUCT PERFORMANCE IN THE SPECIFIC APPLICATION.

***WARNING**
ON INSTALLATION, SET WIRE DISC TO CRIMP HEIGHT REFERENCE SETTING FOR LARGEST WIRE SIZE. CRIMP HEIGHT REFERENCE SETTINGS GREATER THAN THE VALUE SHOWN MAY CAUSE DAMAGE TO THE CRIMP TOOLING, REFER TO THE INSTRUCTION SHEET FOR PROPER SETUP AND ADJUSTMENTS.

PACIFIC VERSION
Shown on sheets 3 of 4 & 4 of 4
(Atlantic version shown on sheets 1 of 4 & 2 of 4)

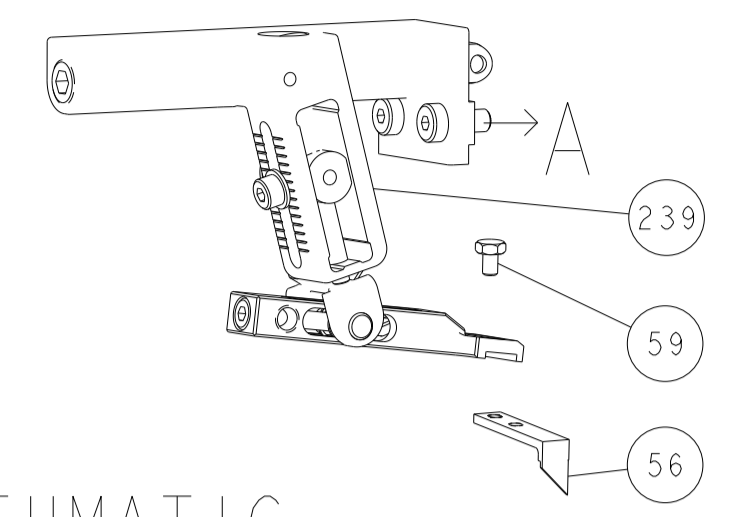
| LOC | DIST | REVISIONS | | | | | |
|-----|------|-----------|-----|-------------|------|-----|------|
| A | 66 | P | LTN | DESCRIPTION | DATE | DWN | APVD |
| | | - | | SEE SHEET 1 | - | - | - |

| | | | | | | |
|---|---|-----|-----|-------------|-------------------------------------|-----|
| △ | - | 1 | 1 | 2119082-9 | CAM, SNAIL, INSULATION ADJUSTMENT | 244 |
| | - | 1 | 1 | 2079764-1 | WASHER, WAVE SPRING, CREST-TO-CREST | 243 |
| | - | 1 | 1 | 2119083-1 | RETAINER, INSULATION DIAL | 242 |
| | - | 1 | 1 | 7-18023-7 | SCR, SKT HD CAP M3 X 4.0 | 241 |
| | - | - | 1 | 2119580-1 | MECHANICAL FEED ASSEMBLY | 239 |
| | - | 1 | - | 2844940-1 | AIR FEED MODULE | 238 |
| | - | REF | REF | 994970-2 | COUNTER, MAGNETIC | 164 |
| | - | 1 | - | 2119641-2 | FEED CAM, AIR FEED | 151 |
| | - | 1 | 1 | 2168083-8 | SCR, SKT HD CAP, RoHS, M4 X 16 | 144 |
| | - | 4 | 4 | 2168083-9 | SCR, SKT HD CAP, RoHS, M4 X 20 | 143 |
| | - | - | 1 | 2119653-2 | FEED CAM, POST FEED | 142 |
| | - | 1 | 1 | 1-1803583-0 | APPLICATOR BASIC ASSEMBLY, SF | 141 |
| | - | 1 | 1 | 1803516-1 | RAM ASSEMBLY, SF PACIFIC | 140 |
| | - | 1 | 1 | 1-18028-2 | WASHER, FLAT, REG M4 | 119 |
| | - | 1 | 1 | 2844908-1 | SCREW, LOCKING | 99 |
| | - | 1 | 1 | 2844907-1 | POST, LOCKING | 98 |
| | - | 1 | 1 | 455888-4 | SPACER, CRIMPER | 82 |
| | - | 1 | 1 | 1803607-3 | DOCUMENTATION PACKAGE | 71 |
| | - | 1 | 1 | 2119740-1 | TAG, IDENTIFICATION | 67 |
| | - | 2 | 2 | 2168078-1 | SCREW, DRIVE, RH, RoHS, 2 x .188 | 66 |
| | - | 1 | 1 | 5-18022-5 | SCR, HEX HD CAP, M4 X 6.0 | 59 |
| | - | 1 | 1 | 1338685-1 | PAWL, FEED | 56 |
| | - | 2 | 2 | 1-2168083-0 | SCR, SKT HD CAP, RoHS, M4 X 10 | 53 |
| | - | 1 | 1 | 1803382-2 | HOLD DOWN, SPRING LOADED | 50 |
| | - | 1 | 2 | 18023-9 | SCR, SKT HD CAP M4 X 6.0 | 49 |
| | - | - | 1 | 2119652-1 | FEED CAM, PRE FEED | 48 |
| | - | 1 | 1 | 1803602-1 | SCR, BHSC, RoHS (M8 X 25) | 41 |
| | - | 1 | 1 | 1-1752356-2 | SUPPORT, TERMINAL | 34 |
| | - | 2 | 2 | 2079383-5 | SCR, BHSC, RoHS (M4 X 20) | 33 |
| | - | 2 | 2 | 3-2844962-0 | SPACER, CYLINDRICAL, STRIP GUIDE | 30 |
| | - | 1 | 1 | 2844992-2 | ASSEMBLY, STRIP GUIDE | 29 |
| | - | 1 | 1 | 1-455888-0 | SPACER, CRIMPER | 28 |
| | - | 1 | 1 | 1320928-2 | STRIP GUIDE | 24 |
| | - | 1 | 1 | 2168083-2 | SCR, SKT HD CAP, RoHS, M4 X 8.0 | 21 |
| | - | 1 | 1 | 1-18028-2 | WASHER, FLAT, REG M4 | 20 |
| | - | 1 | 1 | 2119533-1 | STRIPPER, SIDE FEED | 19 |
| △ | - | 1 | 1 | 2119806-1 | INSERT, SHEAR | 13 |
| | - | 1 | 1 | 3-22280-3 | SPRING, COMPRESSION | 12 |
| | - | 1 | 1 | 1-356885-4 | STOP, SHEAR | 11 |
| △ | - | 1 | 1 | 2119805-1 | SHEAR HOLDER, FRONT | 10 |
| △ | - | 1 | 1 | 454276-5 | FLOATING SHEAR, FRONT | 9 |
| △ | 1 | 1 | 1 | 8-1633138-3 | ANVIL, COMBINATION | 8 |
| | - | 1 | 1 | 2119757-8 | DEPRESSOR, SHEAR | 5 |
| | - | 1 | 1 | 2-238011-6 | BLOCK, CRIMPER SPACER | 4 |
| △ | 1 | 1 | 1 | 9-1633963-5 | CRIMPER, INSULATION OVERLAP PREMIUM | 3 |
| △ | 1 | 1 | 1 | 4-657555-0 | CRIMPER, WIRE PREMIUM | 1 |

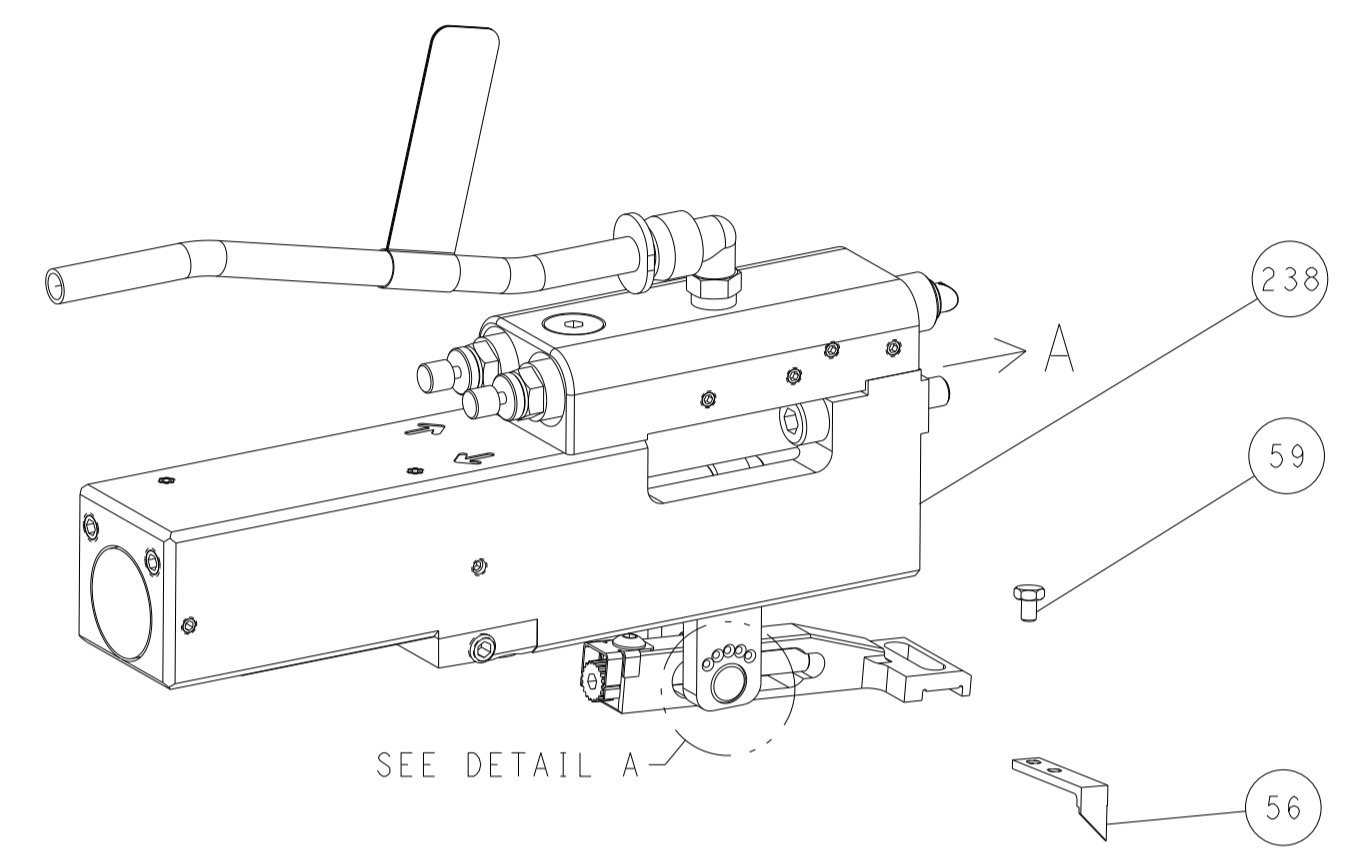
| | | | | |
|--|--|--|--|--|
| THIS DRAWING IS CONTROLLED DOCUMENT. FOR THE LATEST REVISION, REFER TO THE PRODUCT TO BE CRIMPED TOGETHER WITH THE INSTRUCTION SHEET. REVISIONS SHOULD BE CONTACTED FOR THE LATEST POSITION. | | DWN: HOFFNER 25AUG2011 | TE Connectivity Harrisburg, PA 17105-3608 | |
| DIMENSIONS: mm | | CHK: T. ELBIN 26AUG2011 | NAME: Ocean Side Feed Applicator | |
| TOLERANCES UNLESS OTHERWISE SPECIFIED: | | APVD: T. ELBIN 26AUG2011 | SIZE: A1 | |
| 0 PLC ± | | PRODUCT SPEC | CAGE CODE: 00779 | |
| 1 PLC ± | | APPLICATION SPEC | DRAWING NO: C=2151254 | |
| 2 PLC ± | | RESTRICTED TO | SCALE: 1:2 | |
| 3 PLC ± | | WEIGHT | SHEET 3 OF 4 | |
| 4 PLC ± | | MATERIAL | REV J2 | |
| ANGLES FINISH | | Customer Accessible Production Drawing | | |

| LOC | DIST | REVISIONS | | | | | |
|-----|------|-----------|-----|-------------|------|-----|------|
| A | 66 | P | LTN | DESCRIPTION | DATE | OWN | APVD |
| | | - | | SEE SHEET 1 | - | - | - |

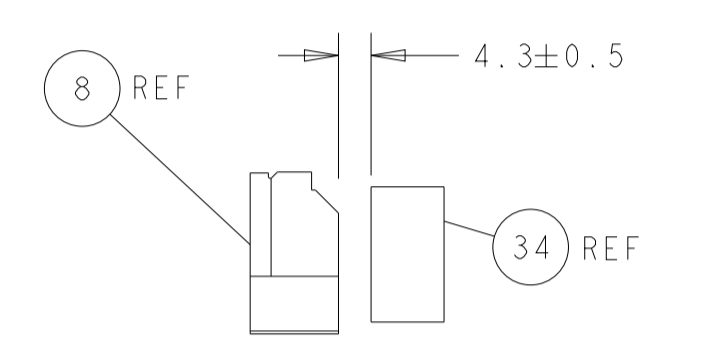
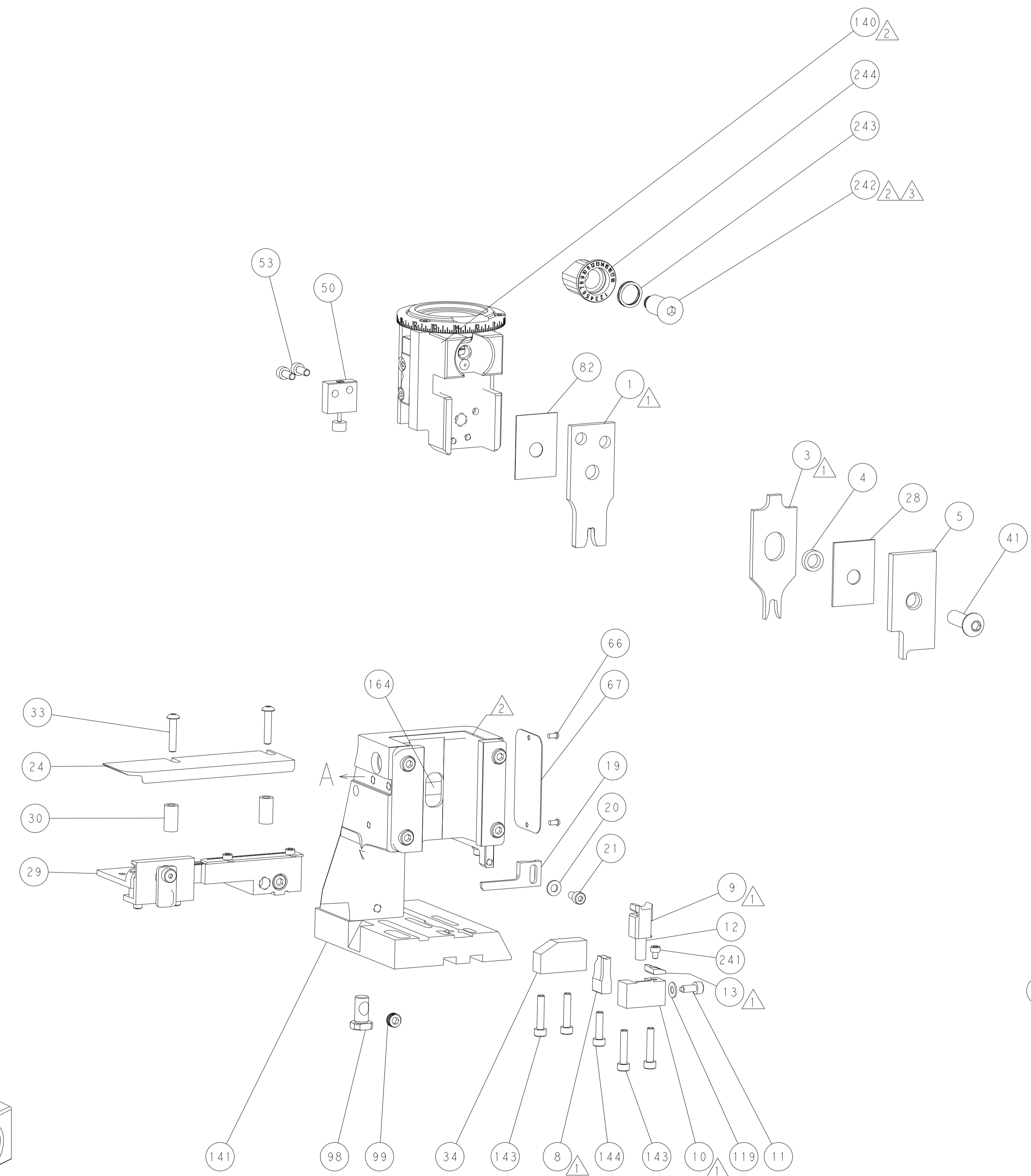
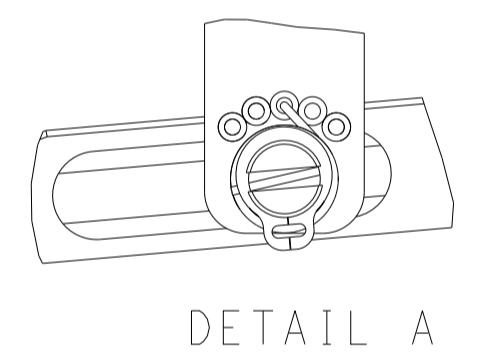
FEED TYPE MECHANICAL



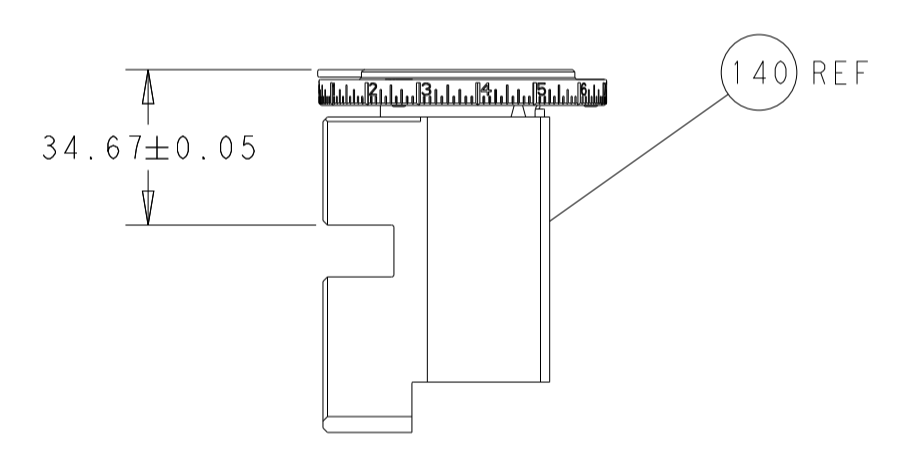
PNEUMATIC



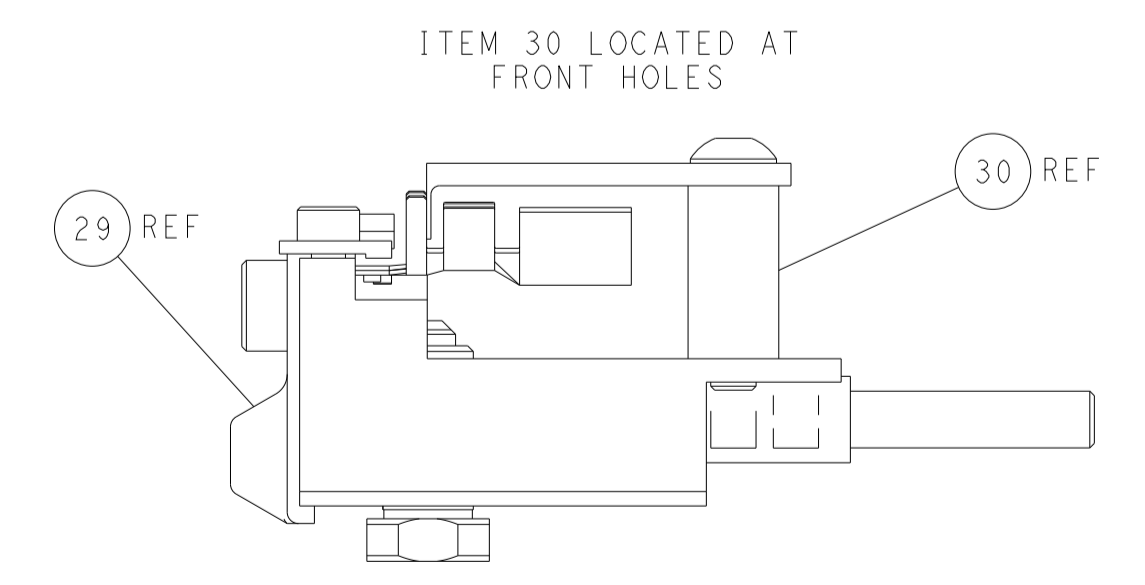
FEED SPRING SETTING POSITION (SHOWN FROM REAR SIDE)



TERMINAL SUPPORT LOCATION

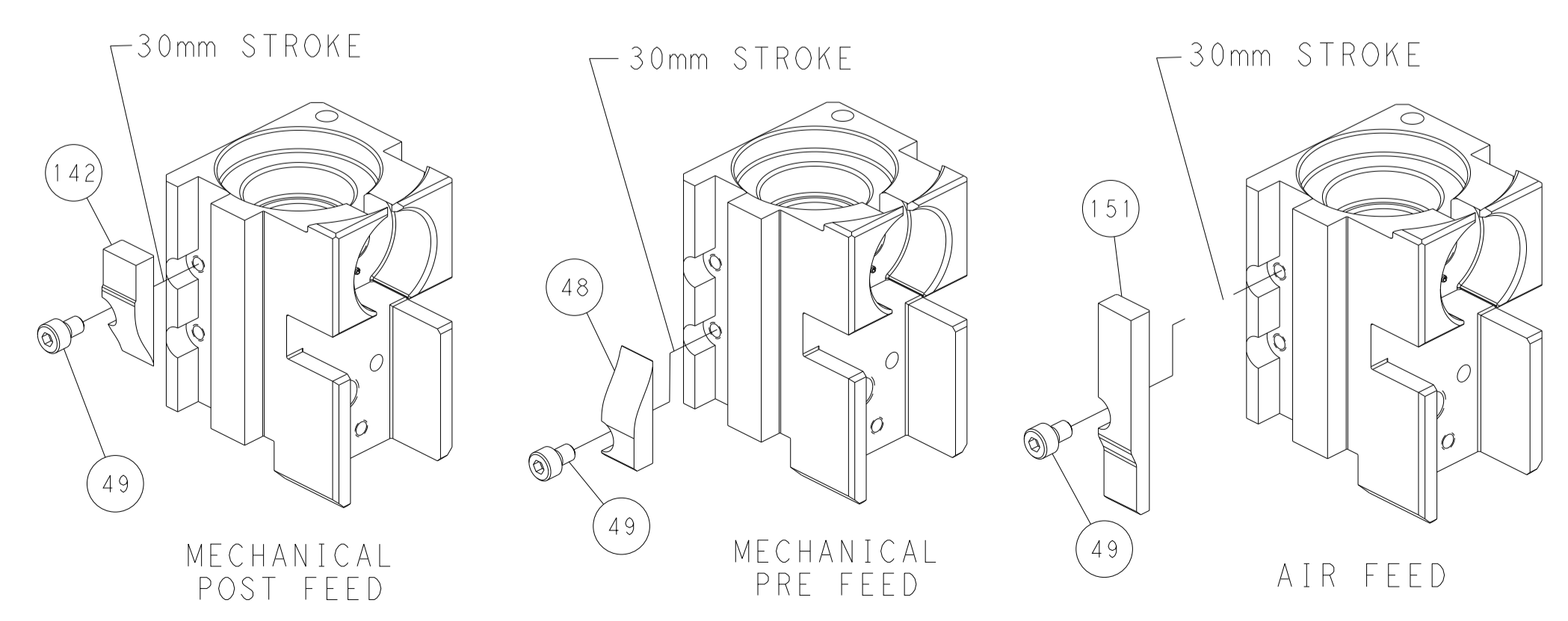


RAM SET-UP



FEED TRACK POSITION GUIDE BY INSULATION BARREL

CAM POSITIONS



PACIFIC VERSION
 Shown on sheets 3 of 4 & 4 of 4
 (Atlantic version shown on sheets 1 of 4 & 2 of 4)

| | | | |
|---|---|---|---|
| <small>THIS DRAWING IS A CONTROLLED DOCUMENT FOR TYCO ELECTRONICS CORPORATION. IT IS THE PROPERTY OF COMPANY AND IS NOT TO BE REPRODUCED OR TRANSMITTED IN ANY FORM OR BY ANY MEANS, ELECTRONIC OR MECHANICAL, INCLUDING PHOTOCOPYING, RECORDING, OR BY ANY INFORMATION STORAGE AND RETRIEVAL SYSTEM, WITHOUT THE WRITTEN PERMISSION OF TYCO ELECTRONICS CORPORATION.</small> | | DWN: HOFFNER 25AUG2011 CHK: TELBIN 26AUG2011 APVD: TELBIN 26AUG2011 | TE Connectivity Harrisburg, PA 17105-3608 |
| DIMENSIONS: mm | TOLERANCES UNLESS OTHERWISE SPECIFIED: 0 PLC ± 1 PLC ± 2 PLC ± 3 PLC ± 4 PLC ± ANGLES ± FINISH | NAME: Ocean Side Feed Applicator APPLICATION SPEC: | SIZE: A1 CAGE CODE: 00779 DRAWING NO: C=2151254 RESTRICTED TO: |
| MATERIAL: | WEIGHT: | Customer Accessible Production Drawing | SCALE: 1:2 SHEET 4 OF 4 REV J2 |