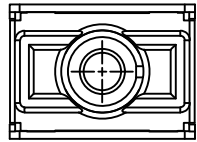


NOTES (UNLESS OTHERWISE SPECIFIED):

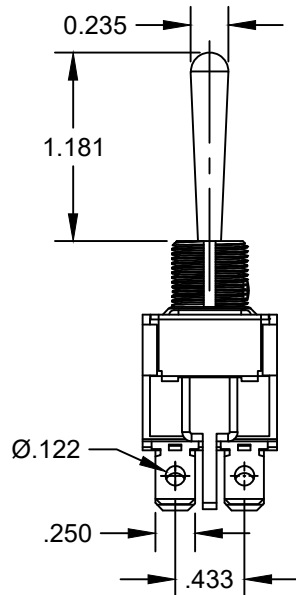
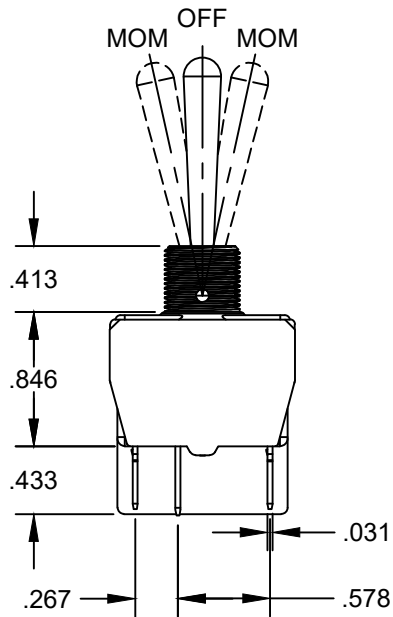
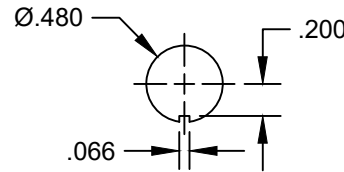
- THIS DRAWING ESTABLISHES GENERAL AND INSPECTION DIMENSIONS ONLY. ELECTRONIC FILE 647H/2K-4_REV_01 IS TO BE USED AS THE GOVERNING DOCUMENT.
- MOUNTING HARDWARE: QTY 1 HEX NUT, QTY 1 KNURLED NUT, SUPPLIED UNMOUNTED.

REVISIONS TABLE

REV	DESCRIPTION	DATE	ECN	INITIALS
01	CUSTOMER REQUESTED DRAWING	03/22/2023	----	CM



RECOMMENDED PANEL CUTOUT

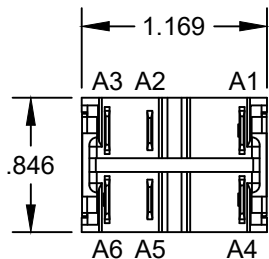




ELECTRICAL SPECIFICATION:

DESCRIPTION: SWITCH, DPDT, TOGGLE, 3POS, MOM-OFF-MOM
 ELECTRICAL RATINGS: 10A@125/250VAC, 1/2Hp.
 PEAK CURRENT: 30A@250VAC MAX DURING 1/2 SINEWAVE.
 ELECTRICAL LIFE: 10,000 CYCLES @ FULL LOAD.
 INITIAL CONTACT RESISTANCE: 10mΩ MAX.
 INSULATION RESISTANCE: 1,000MΩ @ 500VDC.
 DIELECTRIC STRENGTH: 2,000Vrms 50Hz MIN BETWEEN TERMINALS.
 2,500Vrms 50Hz MIN BETWEEN TERMINALS AND FRAME.

MECHANICAL SPECIFICATION:

TORQUE: 1.50Nm(1.10FT/LB) MAX APPLIED TO NUT.
 PANEL THICKNESS: 4.5mm(.177in) MAX BETWEEN TWO NUTS.
 OPERATING TEMPERATURE: -20°C TO +55°C(-4°F TO +131°F).
 CONTACT MATERIAL: SILVER, NICKEL ALLOY.
 CASE MATERIAL: POLYESTER UL94-V0.
 ACTUATOR MATERIAL: BRASS, NICKEL-PLATED.
 BUSHING MATERIAL: BRASS, NICKEL-PLATED OR ZINC DIE CAST.



UNLESS OTHERWISE SPECIFIED: DIMENSIONS ARE IN INCHES TOLERANCES : ±.012	NAME	DATE	 <p>an IDEC company MANUFACTURERS OF MAN-MACHINE INTERFACE PRODUCTS. 970 PARK CENTER DR., VISTA, CA 92081 TEL: (760) 598-2518 FAX: (760) 598-2524</p>	THIS DOCUMENT CONTAINS PROPRIETARY INFORMATION OF APEM, INC. AND IS TENTED SUBJECT TO THE CONDITIONS THAT THE INFORMATION (A) BE RETAINED CONFIDENCE, (B) NOT REPRODUCED OR COPIED IN WHOLE OR PART, (C) NOT BE LEASED TO THIRD PARTY AND, (D) NOT BE USED OR INCORPORATED IN ANY PRODUCT EXCEPT UNDER EXPRESSED WRITTEN AGREEMENT WITH APEM, INC.
	DRAWN BY: CMurua	03/22/2023		
 3rd ANGLE PROJECTION <input checked="" type="checkbox"/> : CRITICAL DIMENSIONS	CHECKED : --	--	TITLE: SWITCH, TOGGLE, 3POS, DPDT, MOM-OFF-MOM	
	EngAPRVL: --	--	SIZE: A PRJCT/ACCT NO.: FILE NO.: DWG NO.: 647H/2K-4 REV: 01	
COMMENTS:	MATERIAL:	FINISH:	SCALE: NONE	SHEET 1 OF 1
FORM NO. EF-310, Rev_B 10/11/17			DO NOT SCALE DRAWING	