

20 19 18 17 16 15 14 13 12 11 9 8 7 6 5 4 3 2 1

M

L

K

J

I

H

G

F

E

D

C

B

A

VIEW ON MATING SIDE

A	A	A	A	A	A	A	A	A	A	A	A	A	A	A	A	A	A	A	A	A	A	A	A	A	A	A	A	A	A	A	A	A	A	A	A	A	A	A	A	A	A	A	A	A									
A	A	A	A	A	A	A	A	A	A	A	A	A	A	A	A	A	A	A	A	A	A	A	A	A	A	A	A	A	A	A	A	A	A	A	A	A	A	A	A	A	A	A	A	A	A	A	A	A	A	A	A	A	A
-	2	3	4	5	6	7	8	9	10	11	12	13	14	15	16	17	18	19	20	21	22	23	24	25	26	27	28	29	30	31	32																						

A = 64 STANDARD CONTACTS L = 2.9

MARKING	STANDARD
PERFORMANCE LEVEL	G2/0 = CONTACT AREA PERFORM. LEVEL 2 / TERMINATION TIN
FLUX PROOF	NO
FIXING CLIP	NO
DIMENSIONS	SD-85013-0001 SHT 1

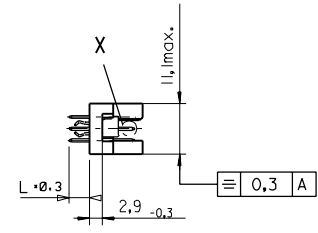
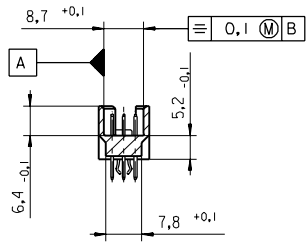
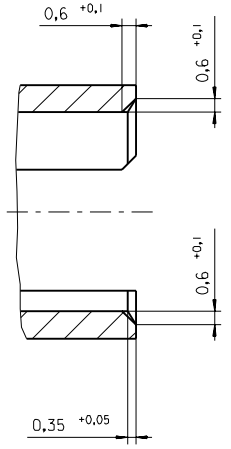
A	G2/0	01-32	01-32
CONTACT SYMBOL	PERFORMANCE LEVEL	CONTACT POSITION NUMBER	

EC NO. I 2004-XXXX DRAWN N.S. 31/03/04 CHECK G.L. 31/03/04 APPR. G.L. 31/03/04 B REV	QUALITY SYMBOLS	GENERAL TOLERANCES: (UNLESS SPECIFIED)	SCALE	DESIGN UNITS <input checked="" type="checkbox"/> MM <input type="checkbox"/> INCH	THIRD ANGLE PROJECTION <input checked="" type="checkbox"/> <input type="checkbox"/>		DIMENSIONS: <input type="checkbox"/> MM INCH <input type="checkbox"/> INCH MM <input checked="" type="checkbox"/> MM ONLY	SHT 1 REV REVISE ON CAD ONLY
	MAJOR	4 PLACES ±0. ±.	DRAWN BY & DATE N.S. 20/04/01	TITLE: 96 POS MALE CONNECTOR ACCORDING DIN 41612 STYLE R CONTACTS ARRANGEMENT				
	CRITICAL	3 PLACES ±0. ±.	CHECKED BY & DATE G.L. 20/04/01	MATERIAL NO. 85013-1938 DRAWING NO. SD-85013-1938				
		2 PLACES ±0. ±.	APPROVED BY & DATE G.L. 20/04/01	SHEET NO. 1 OF 1				
		1 PLACE ±0. ±.	ANGULAR ±	CAD FILENAME S850131938.S01				
DRAFT WHERE APPLICABLE MUST REMAIN WITHIN DIMENSIONS		THIS DRAWING CONTAINS INFORMATION THAT IS PROPRIETARY TO MOLEX INCORPORATED AND SHOULD NOT BE USED WITHOUT WRITTEN PERMISSION.						

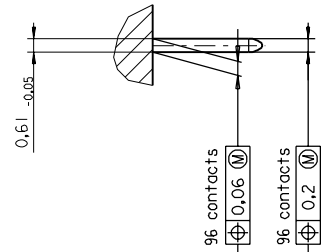
24-border.DGN REV 4 19 18 17 16 15 14 13 12 11 10 9 8 7 6 5 4 3 2 1 96/06/12 LEVEL 6

PART NO.
DWG. NO.

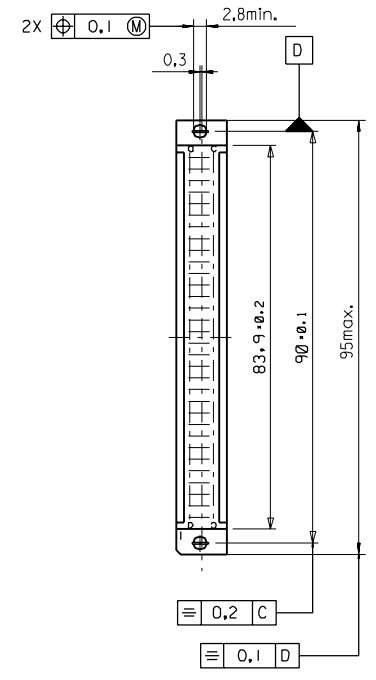
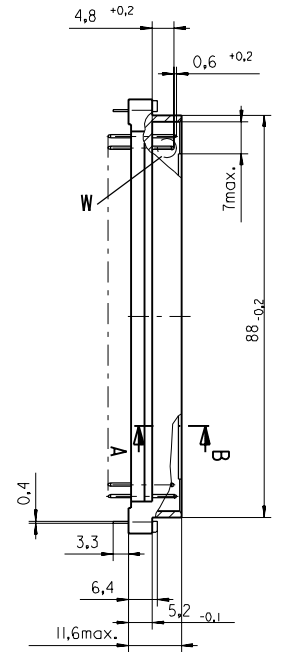
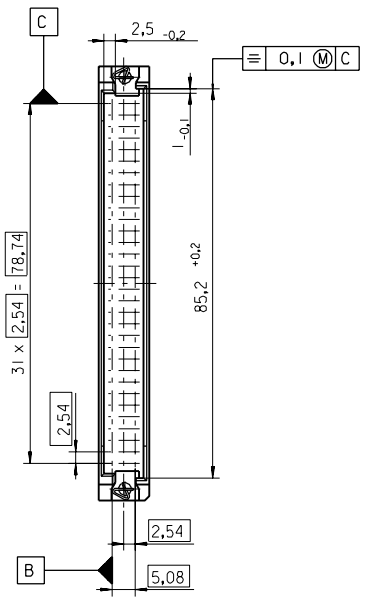
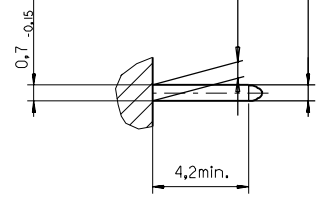
Section A - B
5:1



View X
5:1



View W
5:1



FIRST ANGLE PROJECTION		REVISE ONLY ON CAD SYSTEM		SH.	REV.
UNLESS OTHERWISE SPECIFIED TOLERANCES: ANGULAR $\pm 2^\circ$	INCH	DRWG BY	SIGN	CAD/CAM PROJECT NAME	
	METRIC	Ca		85013000	THIS DRAWING CONTAINS INFORMATION THAT IS PROPRIETARY TO MOLEX INC. & SHOULD NOT BE USED WITHOUT WRITTEN PERMISSION
3 PLACE \pm .	\pm	CHK'D BY	SIGN	TITLE	
2 PLACE \pm .	\pm	KN		96 pos. Male connector acc. DIN 41612 Style R Dimensions	
1 PLACE \pm .	\pm	APP'D BY	SIGN	SHEET NO. DATE	
DRAFT WHERE APPLICABLE MUST REMAIN WITHIN DIMENSIONS				1 OF	95/06/07
DESIGN DIMENSION	<input checked="" type="checkbox"/> MM	SCALE		MOLEX MOLEX EUROPE	
EQUIVALENT DIMENSION	<input type="checkbox"/> MM	: 1		SHEET NO. DATE	
IF TWO DIMENSIONS ARE SHOWN THE UPPER IS THE DESIGN DIMENSION, LOWER IS SECONDARY				1 OF 95/06/07	
first release see ECN No. 1887	LTR			PART NO.	DWG NO.
				SDA-85013-0001	SIZE
				B	

VIEW ON MATING SIDE

∩	A	A	A	A	A	A	A	A	A	A	A	A	A	A	A	A	A	A	A	A	A	A	A	A
∩																								
∩	A	A	A	A	A	A	A	A	A	A	A	A	A	A	A	A	A	A	A	A	A	A	A	A

1 2 3 4 5 6 7 8 9 10 11 12 13 14 15 16 17 18 19 20 21 22 23 24 25 26 27 28 29 30 31 32 33 34 35 36 37 38 39 40 41 42 43 44 45 46 47 48 49 50 51 52 53 54 55 56 57 58 59 60 61 62 63 64

A = 64 STANDARD CONTACTS L-2,9

Marking	Standard
Performance level	G2/0 = Contact area perform. level2 / Termination tin
Flux proof	no
Fixing clip	no
Dimensions	SDA-85013-0001 sht.1
Technical Data	PS-85013-0001

A	G2/0	a1-32	c1-32
Contact symbol	Perform. level	Contact position number	

first release see ECN No. 1868	REVISIONS		REVISIONS		REVISIONS ONLY ON CAD SYSTEM		SH. REV.
	FOR PREVIOUS REVISIONS SEE MRI LIST		CAD/CAM PROJECT NAME S8501319 S31		THIS DRAWING CONTAINS INFORMATION THAT IS PROPRIETARY TO MOLEX INC. & SHOULD NOT BE USED WITHOUT WRITTEN PERMISSION		
LTR	UNLESS OTHERWISE SPECIFIED TOLERANCES: ANGULAR ± 2°		DRWG BY	CHK'D BY	SIGN	TITLE	
	INCH		Ca	KN		96 pos. Male connector	
	METRIC					acc. DIN 41612 style R	
▷	3 PLACE ± .		DRAFT WHERE APPLICABLE MUST REMAIN WITHIN DIMENSIONS		contacts arrangement		
	2 PLACE ± .		DESIGN DIMENSION <input type="checkbox"/> MM <input type="checkbox"/> IN.		MOLEX EUROPE		
	1 PLACE ± .		EQUIVALENT DIMENSION <input type="checkbox"/> MM <input type="checkbox"/> IN.		SHEET NO. DATE		
	IF TWO DIMENSIONS ARE SHOWN, THE UPPER IS THE DESIGN DIMENSION, LOWER IS SECONDARY		SCALE		1 OF 1 95/06/06		
				PART NO.		SIZE	
				85013-1938		SDA-85013-1938	