



Edgeboard Connectors, 200 °C Burn-In Connectors, Dual Readout



ELECTRICAL SPECIFICATIONS

Current Rating: 3 A

Test Voltage Between Contacts:

At sea level: 650 V_{RMS}

At 70 000 feet (21 336 meters): 275 V_{RMS}

Insulation Resistance: 5000 MΩ minimum at 500 V_{DC} potential

Contact Resistance: 30 mV maximum at rated current

Humidity: 48 h at 95 % relative humidity at +90 °C, insulation resistance 5000 MΩ

Shock: three 50G shocks in each of 3 mutually perpendicular planes with no loss of continuity

FEATURES

- 0.100" (2.54 mm) C-C
- Right angle styles included for all models
- High temperature, glass reinforced PPS connector bodies -200 °C
- High reliability copper-nickel-tin alloy contacts
- Accepts PC board thickness of 0.054" to 0.071" (1.37 mm to 1.80 mm)
- High reliability bifurcated bellows contacts
- Gold plated contacts
- Card extender style terminals standard
- Variety of mounting styles available

APPLICATIONS

High temperature, long life connectors specifically designed for burn-in oven and automatic temperature testing applications.

Available in a wide range of sizes. Priced affordably and competitively.

SPECIAL NOTE

When operating units at elevated temperatures, solder having a melting point 50 °C above the operating temperature should be used. Contact factory for specific solder information.

MATERIAL SPECIFICATIONS

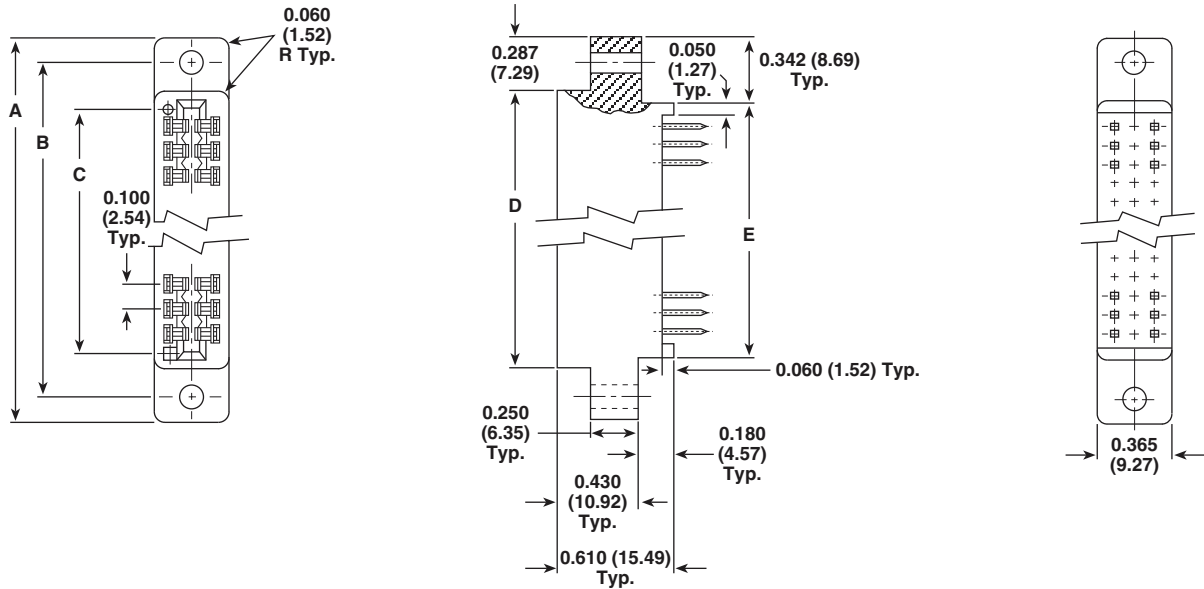
Body Material: 200 °C connectors: fiberglass reinforced polyphenylene sulfide, +200 °C operating temperature, flame retardant (UL 94 V-0)

Contacts: Copper-nickel-tin alloy per ASTM B 740

Plating: Gold plating (0.00003" (0.000762 mm) thick), over 0.00005" (0.00127 mm) minimum nickel underplate

DIMENSIONS in inches (millimeters)

EB4 0.100" (2.54 mm) C-C



MODEL - PART NUMBER	# OF CONTACT POSITIONS PER SIDE	A	B	C	D	E	CARD SLOT DEPTH
EB45-P-6GΔ	6	1.435 (36.45)	1.175 (29.85)	0.700 (17.78)	0.860 (24.84)	0.750 (19.05)	0.300 (7.62)
EB45-P-10GΔ	10	1.835 (46.61)	1.575 (40.00)	1.100 (27.94)	1.260 (32.00)	1.150 (29.21)	0.300 (7.62)
EB45-P-12GΔ	12	2.035 (51.69)	1.775 (45.08)	1.300 (33.02)	1.460 (37.08)	1.350 (34.29)	0.300 (7.62)
EB45-P-15GΔ	15	2.335 (59.31)	2.075 (52.70)	1.600 (40.64)	1.760 (44.70)	1.650 (41.91)	0.300 (7.62)
EB45-P-18GΔ	18	2.635 (66.93)	2.375 (60.32)	1.900 (48.26)	2.060 (52.32)	1.950 (49.53)	0.300 (7.62)
EB45-P-20GΔ	20	2.835 (72.01)	2.575 (65.40)	2.100 (53.34)	2.260 (57.40)	2.150 (54.61)	0.300 (7.62)
EB45-P-22GΔ	22	3.035 (77.09)	2.775 (70.48)	2.300 (58.42)	2.460 (62.48)	2.350 (59.69)	0.300 (7.62)
EB45-P-25GΔ	25	3.335 (84.71)	3.075 (78.10)	2.600 (66.04)	2.760 (70.10)	2.650 (67.31)	0.300 (7.62)
EB45-P-28GΔ	28	3.635 (92.33)	3.375 (85.72)	2.900 (73.66)	3.060 (77.72)	2.950 (74.93)	0.300 (7.62)
EB45-P-30GΔ	30	3.835 (97.41)	3.575 (90.80)	3.100 (78.74)	3.260 (82.80)	3.150 (80.01)	0.300 (7.62)
EB45-P-31GΔ	31	3.935 (99.95)	3.675 (93.34)	3.200 (81.28)	3.360 (85.34)	3.250 (82.55)	0.300 (7.62)
EB45-P-35GΔ	35	4.335 (110.11)	4.075 (103.50)	3.600 (91.44)	3.760 (95.50)	3.650 (92.71)	0.300 (7.62)
EB45-P-36GΔ	36	4.435 (112.65)	4.175 (106.04)	3.700 (93.98)	3.860 (98.04)	3.750 (95.25)	0.300 (7.62)
EB45-P-40GΔ	40	4.835 (122.81)	4.575 (116.20)	4.100 (104.14)	4.260 (108.20)	4.150 (105.41)	0.300 (7.62)
EB45-P-43GΔ	43	5.135 (130.43)	4.875 (123.82)	4.400 (111.76)	4.560 (115.82)	4.450 (113.03)	0.300 (7.62)
EB45-P-44GΔ	44	5.235 (132.97)	4.975 (126.36)	4.500 (114.30)	4.660 (118.36)	4.550 (115.57)	0.300 (7.62)
EB45-P-48GΔ	48	5.635 (143.13)	5.375 (136.52)	4.900 (124.46)	5.060 (128.52)	4.950 (125.73)	0.300 (7.62)
EB45-P-49GΔ	49	5.735 (145.67)	5.475 (139.06)	5.000 (127.00)	5.160 (131.06)	5.050 (128.27)	0.300 (7.62)
EB45-P-50GΔ	50	5.835 (148.21)	5.575 (141.60)	5.100 (129.54)	5.260 (133.60)	5.150 (130.81)	0.300 (7.62)
EB45-P-60GΔ	60	6.835 (173.61)	6.575 (167.00)	6.100 (154.94)	6.260 (159.00)	6.150 (156.21)	0.300 (7.62)
EB45-P-65GΔ	65	7.335 (186.31)	7.075 (179.70)	6.600 (167.64)	6.760 (171.70)	6.650 (168.91)	0.300 (7.62)

ORDERING INFORMATION

When ordering connectors using the above part numbers:

- = Indicate "E" for card extender, "K" for Wire Wrap™ or "3R" for right angle terminals
- Δ = Indicate "X" for standard mounting, "XF" for flush mounting or "XS" for side mounting

MOUNTING STYLES in inches (millimeters)

Wire Wrap™ Permanent Mounting 0.100" (2.54 mm) C-C

Labels: Oven Wall, Component Under Test, Wire Wrap™ Leads, Standard High Temperature Connector, 0.062 (1.57) Thick

200 °C WIRE WRAP™ MODEL NUMBERS

EB45-PK22GX	EB45-PK22GX	EB45-PK35GX	EB45-PK48GX
EB45-PK25GX	EB45-PK25GX	EB45-PK36GX	EB45-PK49GX
EB45-PK28GX	EB45-PK28GX	EB45-PK40GX	EB45-PK50GX
EB45-PK30GX	EB45-PK30GX	EB45-PK43GX	EB45-PK60GX
EB45-PK31GX	EB45-PK31GX	EB45-PK44GX	EB45-PK65GX

Right Angle PC Board Mounting 0.100" (2.54 mm) C-C

Labels: Oven Wall, Component Under Test, Standard High Temperature Connector (EB4X-P3R25GXS*), Input Board

200 °C RIGHT ANGLE MODEL NUMBERS

EB45-P3R10GXS	EB45-P3R22GXS	EB45-P3R35GXS	EB45-P3R48GXS
EB45-P3R12GXS	EB45-P3R25GXS*	EB45-P3R36GXS	EB45-P3R49GXS
EB45-P3R15GXS	EB45-P3R28GXS	EB45-P3R40GXS	EB45-P3R50GXS
EB45-P3R18GXS	EB45-P3R30GXS	EB45-P3R43GXS	EB45-P3R60GXS
EB45-P3R20GXS	EB45-P3R31GXS	EB45-P3R44GXS	EB45-P3R65GXS

Card Extender Mounting For Fast Change of Test Setups 0.100" (2.54 mm) C-C

Labels: Component Under Test, Oven Wall, Standard High Temperature Connector, Card Extender, Standard Connector, 0.062 (1.57) Thick, Card Extender Contacts

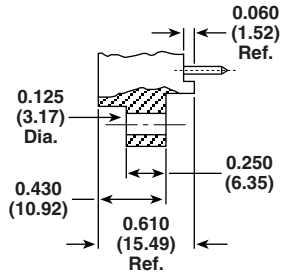
200 °C CARD EXTENDER MODEL NUMBERS

EB45-PE10GX	EB45-PE22GX	EB45-PE35GX	EB45-PE48GX
EB45-PE12GX	EB45-PE25GX	EB45-PE36GX	EB45-PE49GX
EB45-PE15GX	EB45-PE28GX	EB45-PE40GX	EB45-PE50GX
EB45-PE18GX	EB45-PE30GX	EB45-PE43GX	EB45-PE60GX
EB45-PE20GX	EB45-PE31GX	EB45-PE44GX	EB45-PE65GX

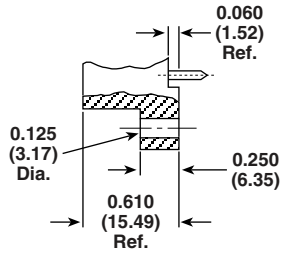
MOUNTING VARIATIONS in inches (millimeters)

0.100" (2.54 mm) C-C

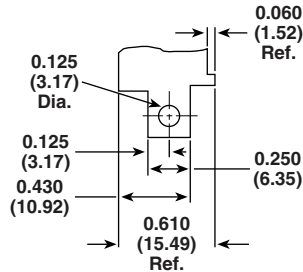
Type "X"
Clearance Hole
Raised Mounting Flange



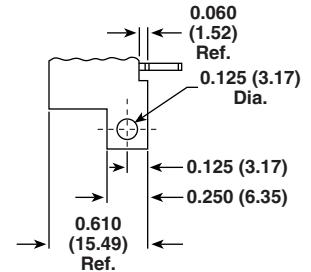
Type "XF"
Clearance Hole
Flush Mounting Flange



Type "XS"
Right Angle
Mounting Flange



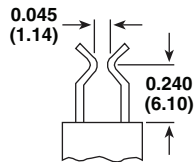
Type "XFS"
Right Angle
Mounting Flange



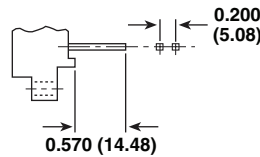
TERMINAL VARIATIONS in inches (millimeters)

0.100" (2.54 mm) C-C

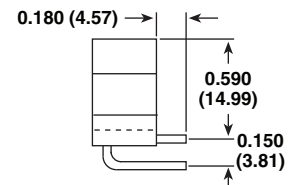
Type "E"
Card Extender



Type "K"
Wire Wrap™
0.025 (0.630) Square Terminals



Type "3R"
Right Angle
0.025 (0.630) Square Terminals





Disclaimer

ALL PRODUCT, PRODUCT SPECIFICATIONS AND DATA ARE SUBJECT TO CHANGE WITHOUT NOTICE TO IMPROVE RELIABILITY, FUNCTION OR DESIGN OR OTHERWISE.

Vishay Intertechnology, Inc., its affiliates, agents, and employees, and all persons acting on its or their behalf (collectively, "Vishay"), disclaim any and all liability for any errors, inaccuracies or incompleteness contained in any datasheet or in any other disclosure relating to any product.

Vishay makes no warranty, representation or guarantee regarding the suitability of the products for any particular purpose or the continuing production of any product. To the maximum extent permitted by applicable law, Vishay disclaims (i) any and all liability arising out of the application or use of any product, (ii) any and all liability, including without limitation special, consequential or incidental damages, and (iii) any and all implied warranties, including warranties of fitness for particular purpose, non-infringement and merchantability.

Statements regarding the suitability of products for certain types of applications are based on Vishay's knowledge of typical requirements that are often placed on Vishay products in generic applications. Such statements are not binding statements about the suitability of products for a particular application. It is the customer's responsibility to validate that a particular product with the properties described in the product specification is suitable for use in a particular application. Parameters provided in datasheets and / or specifications may vary in different applications and performance may vary over time. All operating parameters, including typical parameters, must be validated for each customer application by the customer's technical experts. Product specifications do not expand or otherwise modify Vishay's terms and conditions of purchase, including but not limited to the warranty expressed therein.

Hyperlinks included in this datasheet may direct users to third-party websites. These links are provided as a convenience and for informational purposes only. Inclusion of these hyperlinks does not constitute an endorsement or an approval by Vishay of any of the products, services or opinions of the corporation, organization or individual associated with the third-party website. Vishay disclaims any and all liability and bears no responsibility for the accuracy, legality or content of the third-party website or for that of subsequent links.

Except as expressly indicated in writing, Vishay products are not designed for use in medical, life-saving, or life-sustaining applications or for any other application in which the failure of the Vishay product could result in personal injury or death. Customers using or selling Vishay products not expressly indicated for use in such applications do so at their own risk. Please contact authorized Vishay personnel to obtain written terms and conditions regarding products designed for such applications.

No license, express or implied, by estoppel or otherwise, to any intellectual property rights is granted by this document or by any conduct of Vishay. Product names and markings noted herein may be trademarks of their respective owners.