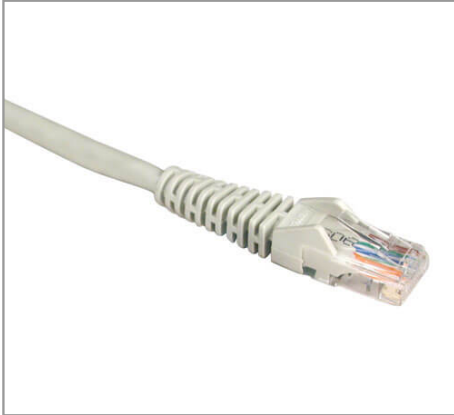


25-ft. Cat5e 350 MHz Snagless Molded Cable (RJ45 M/M) - Black

MODEL NUMBER: N001-025-BK-R



Description

Tripp Lite's 25-ft. black snagless category 5e (Cat5e) patch cable has 2 snagless RJ45 molded male connectors featuring integral strain relief. The cable is manufactured from PVC 4-pair stranded UTP and is rated for 350MHz/1Gbps communication. All cables are offered in a variety of lengths and colors for all category 5 (Cat5) and 5e cabling needs. Standard category 5e patch cables are also available. Tripp Lite warrants this product to be free from defects in materials and workmanship for life.

Features

- Cabling for category 5 (Cat5) and 5e (Cat5e) applications
- Length: 25-ft. color: black connectors: RJ45 male
- Feature molded connectors with integral strain relief
- Snagless design protects the locking tabs on the RJ45 connectors from being damaged or snapped off during installation
- PVC 4-pair stranded UTP
- Rated for 350MHz/ 1Gbps communication
- Meets most current industry standards including IEEE 802.3ab, IEEE 802.5, ANSI/EIA/TIA 568, ISO/IEC 11801 and ETL (category 5e draft 11)
- Available in other colors and lengths
- Also available without the snagless feature (N002 series)
- Also available - Cat6 cables (N201 series)
- Warranted to be free from defects in materials and workmanship for life.

Specifications

OVERVIEW	
UPC Code	037332012586
Technology	Cat5/5e

Highlights

- Premium cabling for Category 5 and 5e applications—rated for 350 MHz/1 Gbps communications
- IEEE 802.3ab
- PVC 4-pair stranded UTP
- All cables feature boots with integral strain-relief and RJ45 (Male) connectors
- Retail Packaging

System Requirements

- For 1000Base-T (1Gbps Ethernet), 10/100Base-T (Ethernet), 100 Mbps TPDDI, 155 Mbps ATM, ISDN, voice and Token Ring Type3 applications.

Package Includes

- 25-ft. Black Snagless Cat5e Patch Cable

PHYSICAL	
Color	Black
Cable Shielding	UTP
Cable Length (ft.)	25
Cable Length (m)	7.62
Shipping Dimensions (hwd / in.)	7.50 x 7.25 x 2.50
Shipping Dimensions (hwd / cm)	19.05 x 18.42 x 6.35
Shipping Weight (lbs.)	0.88
Shipping Weight (kg)	0.40
WARRANTY & SUPPORT	
Product Warranty Period (Worldwide)	Lifetime limited warranty