

## Product Change Notification

### PCN-PCC-248-2017

Business Unit	Product Line Code	Type of Change	Action	Date of Issue
PCC - PCB Connectors	AAA	Product Change Notification	Notify Distributors and Field	2/7/2017

*The following Phoenix Contact products have been modified. Existing specifications will be met or exceeded. Please review and acknowledge this document and inform your personnel as needed.*

#### Description for Product Change Notification

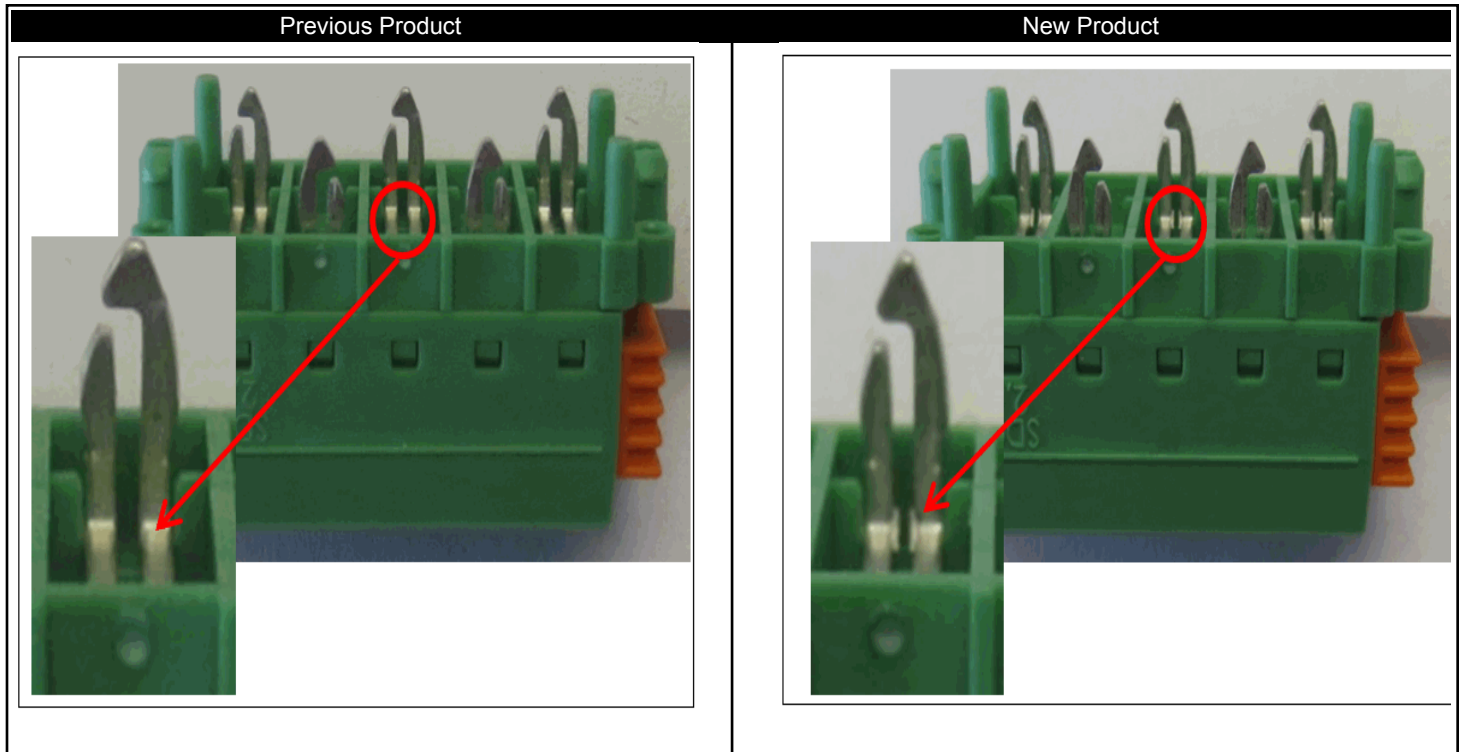
For purely procedural and production-related reasons, the contact contour inside the part has been modified. All documentation dimensions and technical data remain the same. During the conversion period, both versions will be delivered depending on inventory.

#### Stock Status

Can existing stock still be used?	Yes
Is mixture of stock acceptable?	Yes

#### Transaction Dates

Date modification goes into effect from Germany:	2/7/2017
Expected first shipment (from Phoenix Contact) of the modified products(s):	2/1/2017





Phoenix Contact Inc.  
P.O. BOX 4100  
Harrisburg, PA 17111-0100  
Phone: 717-944-1300  
Fax: 717-944-1625

## Product Change Notification

*Should you have any issues with the timeline or content of this product change, please contact Phoenix Contact using the information below. Customers should acknowledge receipt of the PCN within 30 days of delivery of the PCN; provided, however, that the failure to acknowledge receipt does not affect the product change or the effective date thereof.*

**Contact Info:**

Harold McKee  
hmckee@phoenixcon.com

Thank you,

A handwritten signature in black ink, appearing to read 'JDunbar', positioned above a horizontal line.

---

James Dunbar

Product Marketing Manager PCC



Phoenix Contact Inc.  
P.O. BOX 4100  
Harrisburg, PA 17111-0100  
Phone: 717-944-1300  
Fax: 717-944-1625

## Product Change Notification

Part #	Type Description
1864024	SDC 2,5/ 1-PV-5,0-ZB
1864037	SDC 2,5/ 2-PV-5,0-ZB
1864040	SDC 2,5/ 3-PV-5,0-ZB
1864053	SDC 2,5/ 4-PV-5,0-ZB
1864066	SDC 2,5/ 5-PV-5,0-ZB
1864079	SDC 2,5/ 6-PV-5,0-ZB
1864082	SDC 2,5/ 7-PV-5,0-ZB
1864095	SDC 2,5/ 8-PV-5,0-ZB
1864105	SDC 2,5/ 9-PV-5,0-ZB
1864118	SDC 2,5/10-PV-5,0-ZB
1864121	SDC 2,5/11-PV-5,0-ZB
1864134	SDC 2,5/12-PV-5,0-ZB
1864147	SDC 2,5/13-PV-5,0-ZB
1864150	SDC 2,5/14-PV-5,0-ZB
1864163	SDC 2,5/15-PV-5,0-ZB
1864176	SDC 2,5/16-PV-5,0-ZB