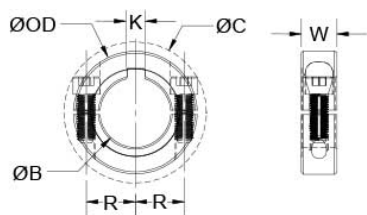




## SPK-28-F

Ruland SPK-28-F, 1 3/4" Two-Piece Shaft Collar, Black Oxide Steel, Clamp Style With Keyway, 2 3/4" OD, 0.688" Width




### Description

Ruland SPK-28-F is a two-piece shaft collar with a 1.7500" bore, 2 3/4" OD, 0.688" width, and 3/8" keyway. The clamp style design does not mar the shaft, is easy to remove, and is indefinitely adjustable. It is commonly used for guiding, spacing, stopping, mounting, and component alignment. The keyway prevents slippage on the shaft when the shaft collar is used for positive drive. Equipment manufacturers benefit from the tightly controlled face to bore perpendicularity of Ruland shaft collars, TIR of  $\pm 0.002$ ". Perpendicularity is critical for alignment when the shaft collar is used as a load bearing face, mechanical stop, or for mounting components such as gears or bearings. Proprietary processes have been developed by Ruland to maintain superior fit, finish, and holding power. SPK-28-F is stamped with the Ruland name and bore size for ease of identification. Halves are mated throughout the manufacturing process for proper fit and alignment. Forged screws test beyond ANSI standards to ensure maximum holding power. SPK-28-F is manufactured from solid bar stock sourced from select North American mills and machined to a fine burr free finish. Ruland uses 1215 lead-free steel with a proprietary black oxide finish that produces a fine glossy finish while increasing holding power and resisting corrosion. SPK-28-F is RoHS3 and REACH compliant and manufactured in our Marlborough, MA factory under strict controls using proprietary processes.

### Product Specifications

<b>Bore (B)</b>	1.7500 in	<b>Bore Tolerance</b>	+0.0020 in / +0.0005 in
<b>Keyway (K)</b>	3/8 in	<b>Width (W)</b>	0.688 in
<b>Outer Diameter (OD)</b>	2 3/4 in	<b>Width Tolerance</b>	+0.003 in / -0.010 in
<b>Clearance Diameter (C) MAX</b>	3.046 in	<b>Recommended Gap</b>	0.125 in
<b>Recommended Shaft Tolerance</b>	+0.0000 in / -0.0005 in	<b>Forged Clamp Screw</b>	5/16-24
<b>Screw Material</b>	Alloy Steel	<b>Hex Wrench Size</b>	1/4 in
<b>Screw Finish</b>	Black Oxide	<b>Seating Torque</b>	325 lb-in
<b>Screw Location (R)</b>	1.125 in	<b>Number of Screws</b>	2 ea
<b>Material Specification</b>	1215 Carbon Steel Bar	<b>Temperature</b>	-40°F to 350°F (-40°C to 176°C)
<b>Finish Specification</b>	Hot Process Black Oxide, Impregnated with Naphthenic Oil, Centrifugally Dried	<b>Manufacturer</b>	Ruland Manufacturing
<b>Country of Origin</b>	USA	<b>Weight (lbs)</b>	0.606900
<b>UPC</b>	634529096154	<b>UNSPC</b>	31162811
<b>Tariff Code</b>	8483.60.8000		

**Note 1** Performance ratings are for guidance only. The user must determine suitability for a particular application.

**Prop 65**  **WARNING** This product can expose you to the chemical Ethylene Thiourea, known to the State of California to cause cancer and birth defects or other reproductive harm. For more information go to [www.P65Warnings.ca.gov](http://www.P65Warnings.ca.gov).

### Installation Instructions

1. Use the SPK-28-F two-piece shaft collar as it is received.
2. Wipe the bore clean.
3. Apply a thin coat of light oil to the shaft.
4. Place the collar onto the desired shaft location with the groove side as the work surface. Tighten the collar using a 1/4 in hex wrench until a slight resistance is felt.
5. Be sure to maintain the gap of 0.063 in between the two halves of the collar during installation.
6. Wring collar into its final position and tighten the screw to the full recommended seating torque of 325 lb-in using a 1/4 in torque wrench.

