

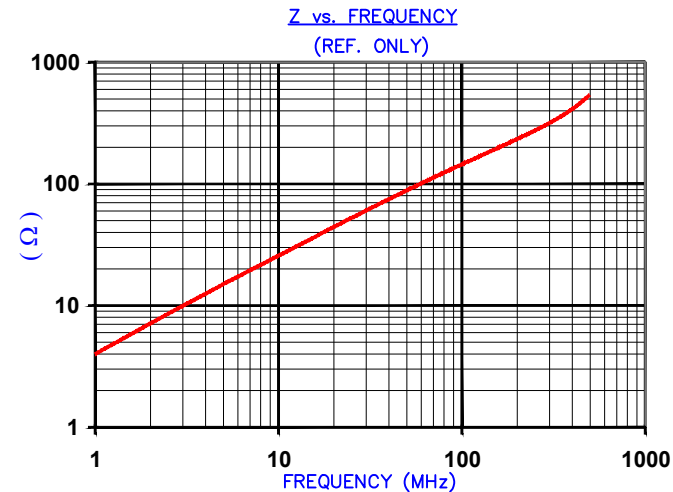
DETAIL "A"
CHAMFER
(TYPICAL)
SCALE=8:1

NOTES: UNLESS OTHERWISE SPECIFIED

- PARTS NEED TO BE CLEANED WITH NO FERRITE RESIDUE LEFT ON THE SURFACE OF THE PARTS.

THIS MAY REQUIRE SPECIAL HANDLING,
PACKAGING, WASHING, OR WIPING.

IMPEDANCE (Z)			
Frequency	25 MHz	100 MHz	300 MHz
Nominal (REF)	52 Ω	145 Ω	312 Ω
Minimum	- Ω	116 Ω	- Ω

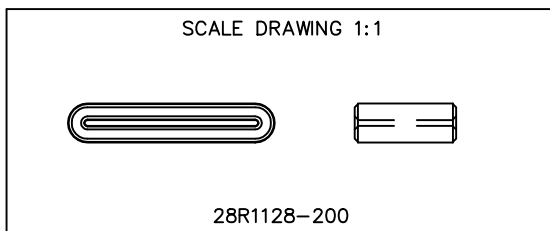


AGILENT E4991A Impedance/Material Analyzer
HP 16092A Test Fixture, REF #5883(12-8)

FERRITE CORE DIMENSIONS (SPEC):mm[Inches]

A	28.58 [1.125]	+	0.50 [.020]
B	24.00 [.945]	+	0.50 [.020]
C	14.00 [.551]	+	0.20 [.008]
D	5.38 [.212]	+	0.35 [.014]
		-	0.15 [.006]
E	0.80 [.031]	+	0.20 [.008]
		-	0.15 [.006]

WEIGHT/1000 8.76 kgs [19.32 Lbs]



DIMENSIONS ARE IN mm[INCHES].				This print is the property of Laird Tech. and is loaned in confidence subject to return upon request and with the understanding that no copies shall be made without the written consent of Laird Tech. All rights to design or invention are reserved.		Laird	
C	UPDATE LOGO, ADD NOTES	03/14/2019	Jcai	PROJECT/PART NUMBER:	28R1128-200	REV	C
B	UPDATE LOGO CHG TOLS ON D DIM	06/17/09	JRK	PART TYPE:	FERRITE RIBBON CORE	DRAWN BY:	JRK
A	ORIGINAL DRAFT	08/31/07	JRK	DATE:	08/31/07	SCALE:	2 : 1
REV	DESCRIPTION	DATE	INT	CAD #	28R1128-200-C	TOOL #	R1128
						MATERIAL:	
						Ferrite	