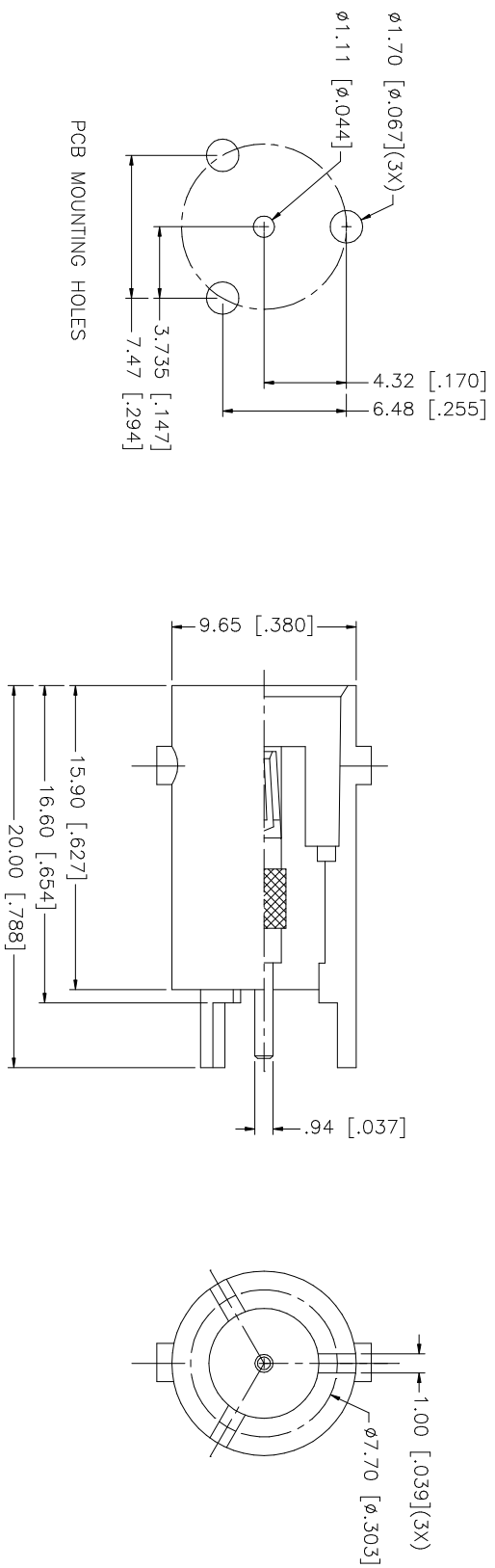


| REV. | DATE     | DESCRIPTION           |
|------|----------|-----------------------|
| A    | 01/07/04 | UPDATE DRAWING FORMAT |



| NO. | DESCRIPTION | MATERIAL     | FINISH  | QTY                     | UNLESS OTHERWISE SPECIFIED DIMENSIONS ARE IN MILLIMETERS. DIMENSIONS IN [ ] ARE IN INCHES AND FOR CUSTOMER REFERENCE ONLY. TOLERANCES FOR MILLIMETERS ARE: | APPROVALS  | DATE     | PART DESCRIPTION                                    |      |      |       |
|-----|-------------|--------------|---------|-------------------------|--|--|----------|---|------|------|-------|
| 8   |             |              |         |                         | 0.5 - 8mm $\pm$ 0.20mm   | APPROVALS<br>DRAWN G.R.S.<br>CHECKED<br>ISSUED<br>SHEET 1 OF 1 | 01/07/04 | <b>Amphenol Connex</b><br>BNC PC MOUNT RECEIPT JACK |      |      |       |
| 7   |             |              |         | B - 30mm $\pm$ 0.40mm   |  |  |          |   |      |      |       |
| 6   |             |              |         | 30 - 120mm $\pm$ 0.30mm |  |  |          |   |      |      |       |
| 5   |             |              |         |                         | UNLESS OTHERWISE SPECIFIED DIMENSIONS FOR INCHES ARE:  |  |          |   |      |      |       |
| 4   |             |              |         |                         | 0.20 - .315 = $\pm$ 0.007"   |  |          |   |      |      |       |
| 3   | CONTACT PIN | PHOS. BRONZE | GOLD    | 1                       | .315 - 1.180 = $\pm$ 0.015"  |  |          |   |      |      |       |
| 2   | INSULATOR   | TEFLON       | NATURAL | 1                       | 1.180 - 4.724 = $\pm$ 0.020"   |  |          |   |      |      |       |
| 1   | BODY        | BRASS        | NICKEL  | 1                       |  |  |          |   |      |      |       |
|     | DESCRIPTION | MATERIAL     | FINISH  | QTY                     | DO NOT SCALE DRAWING   | CAD FILE   |          | DWG. NO.  | REV. | SIZE | SCALE |
|     |             |              |         |                         |  | C:/112/112483.DWG  |          | 112483.DWG  | A    | A    | NA    |