

Quality Control Standard

出货品质标准

Valued customer 客户名称 :	Customer Product Name/No. (客户产品名称/编号):	打印机	
Model No 机种编号 :	Swatch No.: 样品编号	Date作成日: Rev. Date修订日:	2023/1/30 Rev.
Our Code No. 仕样编号 :	(Please Use Our Code No. To Order) (订货时请用此仕样编号)	D/V ROHS	

1. Conditions of Standard Operation / 工作条件

1- 1)Driving Voltage 驱动电压	: 18 V	DC Constant between motor terminals. 马达端子电压 18 V 直流恒压。
1- 2)Direction of Rotation 回转方向	: CCW	viewing from metal housing. 面对马达金属外壳时。
1- 3)Position of Motor 马达放置状态	: To be placed horizontally when measuring. 测试时水平放置。	

1- 4)Operating Temperature工作温度	: -10 °C to 60 °C	噪音测试示意图 
1- 5)Operating Humidity工作湿度	: 30%RH to 95%RH	

2. Conditions of Standard Test / 测试条件

2- 1)Testing Temperature测试温度	: 10°C to 30°C	
2- 2)Testing Humidity测试湿度	: 30%RH to 95%RH	

3. Initial Electrical Characteristics / 初期特性

3- 1) No Load Speed 无负荷转速	: 4080 ± 600 rpm	: 4080 ± 600 转/分
3- 2) No Load Current 无负荷电流	: 120 mA max.	: 最大 120 毫安培
3- 3) Stall Torque 堵转扭力	At Load	10.9 & 47.4 mNm
	在负载点	10.9 & 47.4 mNm
3- 4) Stall Current 堵转电流	: 4.2 A max.	: 最大 4.2 安培
3- 5) Mechanical Noise(vertical from housing side) 30 cm Background noise 30dB Max) 机械噪音(距离铁壳侧 30 cm, 环境噪音30dB Max)	: 46	dB Or below(RMS)JIS-A Characteristics dB 以下(RMS)JIS-A特性
3- 6) Reference Performance Curve 参考性能曲线	: As per attached Sheet	<u>RP555-ST-23105</u>
3- 7) Dimensions 外形尺寸	: As per Drawing attached	<u>WG- R555T-Y39</u>
3- 8) End play of Shaft 虚位	: 0.05 ~ 0.50 mm	: 0.05 ~ 0.50 毫米

For & on behalf of Customer

For & on behalf of Standard Motor Co., Ltd.

Jack Lee 2023/02/07



As a reminder, the specification should be signed and returned within two weeks, or it will be considered as acceptable by the customer. 如果客户两周内不签字确认并返回, 将被视为已认可此规格。

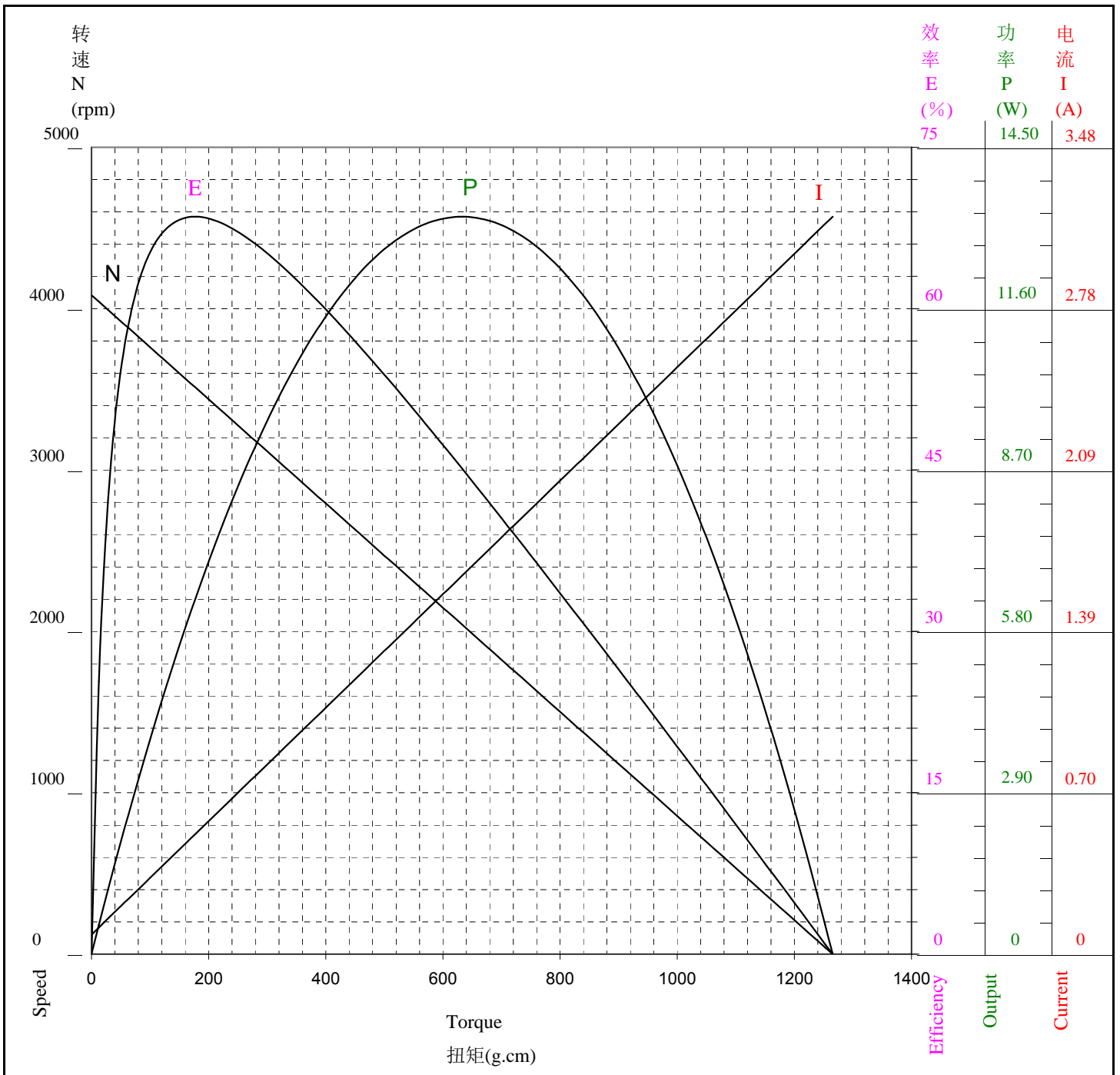
性能表只供参考
马达实际参数请以马达出货标准为主

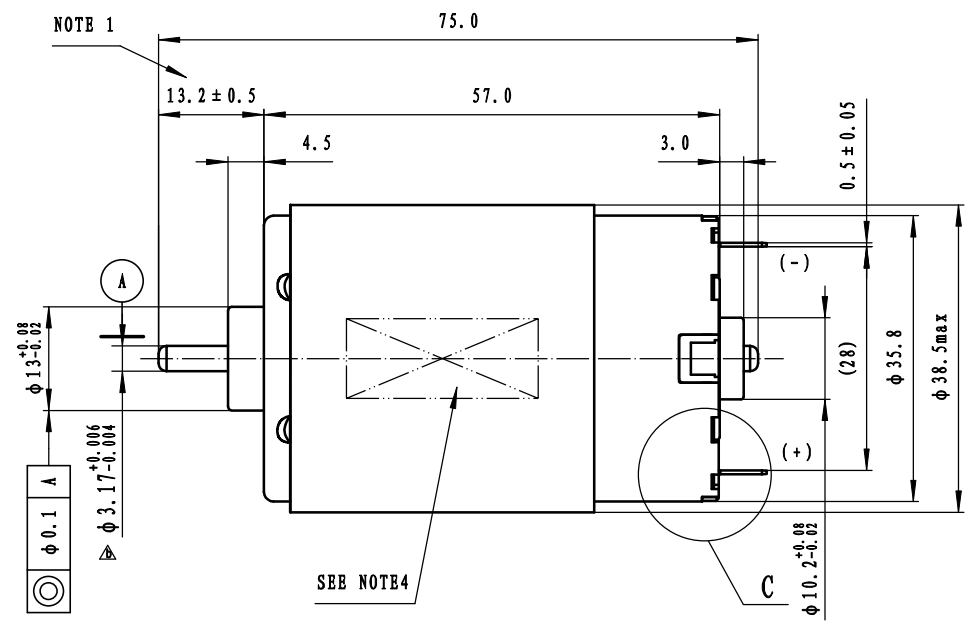
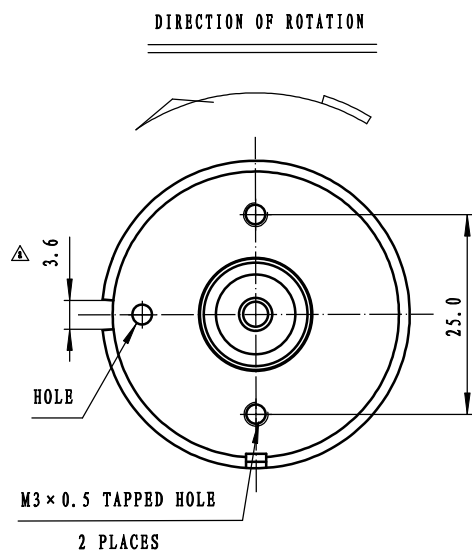


STANDARD MOTOR 標準微型摩打有限公司

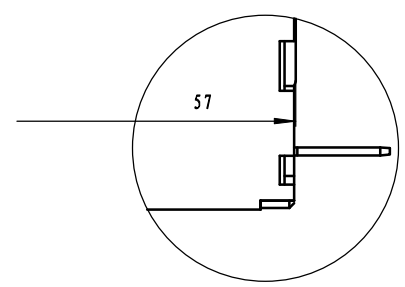
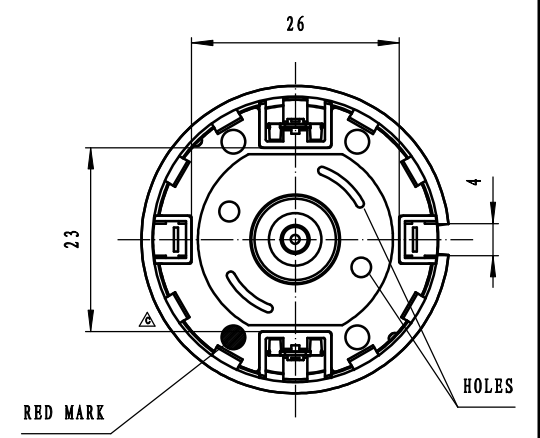
两点法: 111.2 g.cm & 483.4 g.cm

Model/Winding 型号/卷线	Voltage 电压 V	No Load 无负荷		At Maximum Efficiency 最大效率点				At Maximum Output 最大功率点				Stall 停止	
		Current 电流 A	Speed 转速 rpm	Current 电流 A	Speed 转速 rpm	Torque 扭矩 g.cm	Efficiency 效率 %	Current 电流 A	Speed 转速 rpm	Torque 扭矩 g.cm	Output 功率 W	Current 电流 A	Torque 扭矩 g.cm
RP555-ST-23105	18.0	0.084	4084	0.517	3513	176.9	68.5	1.631	2042	632.7	13.25	3.178	1265.3

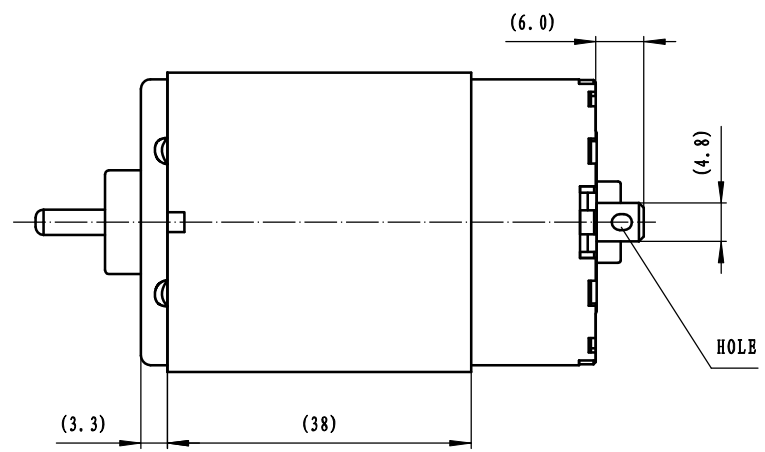




日期	标记	位置	记事	担当	确认
13.09.26	△x1	B1	增加壳筒宽度3.6mm	张照海	王增修
16.05.24	△x1	C3	马达轴外径由φ3.17±0.006→φ3.17±0.004	吴军	张照海
16.06.20	△x1	C7	马达外观图与实物不符,取消小壳板工艺孔	吴军	张照海



C
2 : 1



NOTES (备注):

1. THIS DIM APPLIES ONLY WHEN MOTOR SHAFT IS IN EXTREME LEFT POSITION
该尺寸适用于将轴压于左侧时
2. SHAFT END PLAY 0.05 ~ 0.5mm
马达虚位(轴向串动) 0.05 ~ 0.5mm
3. USABLE MACHINE SCREW LENGTH 4.0mm MAX. FROM MOTOR MOUNTING SURFACE
从大壳外端面开始, 可用螺钉长度4.0mm MAX
4. SPECIFIED CONTENT WILL BE TYPEGRAPHICALED IN CONFORMITY TO GB/TUP BOOK OF MOTOR
按马达仕様书印刷指定内容

Characteristic	CHK. BY	CHK. DATE	DWN. BY	DWN. DATE	TITLE
□ Cp _k > 1.00			吴军	13.05.06	Motor outline drawing
□ Cp _k > 1.33					DWG. No. WG-R555T-Y39
					Undeclared tolerance ± 0.3mm
					SCALE 1.5:1
					Rev. c
					A3