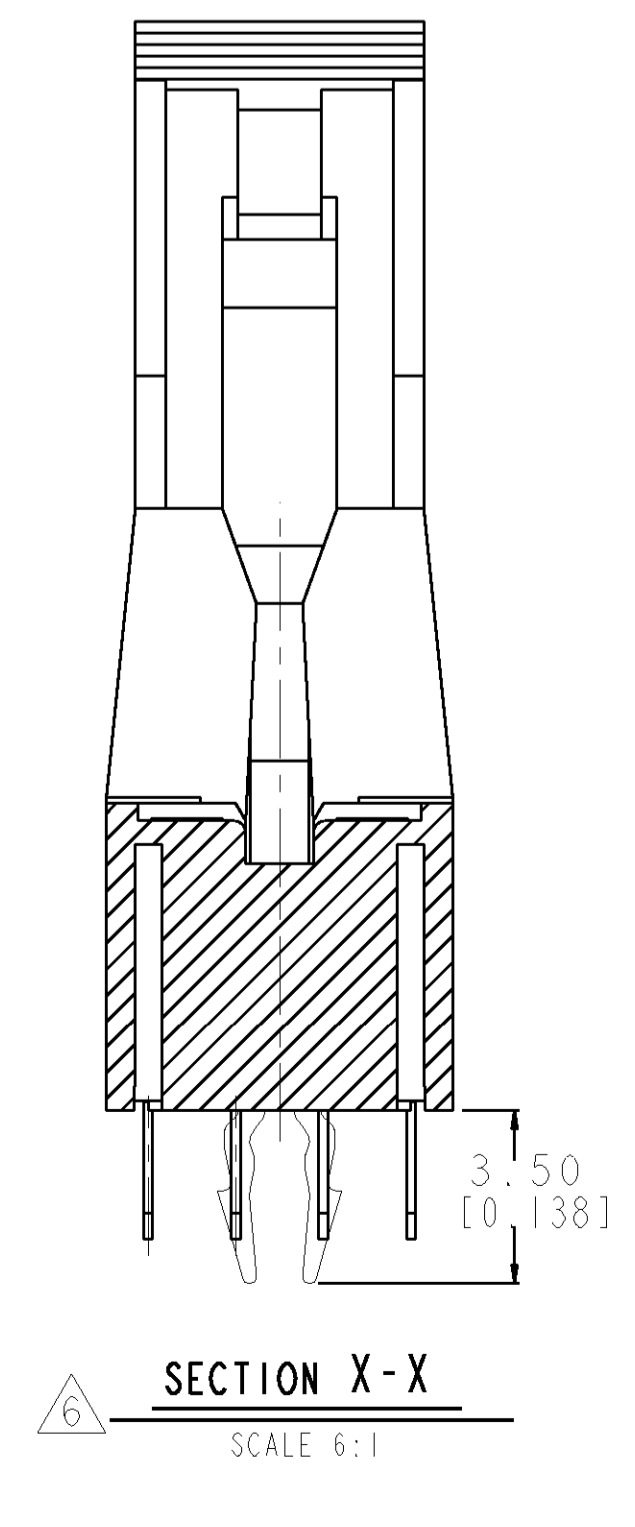
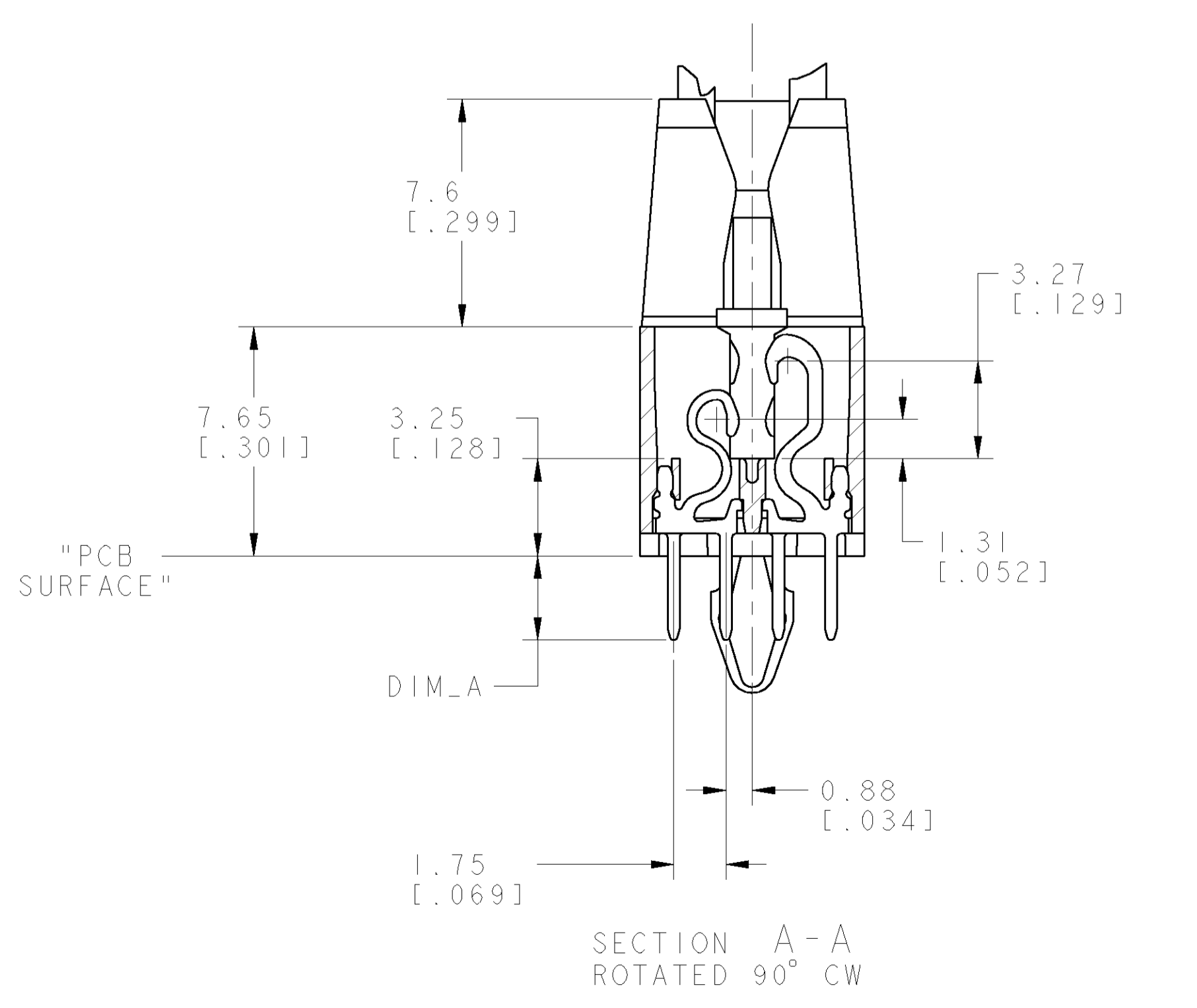
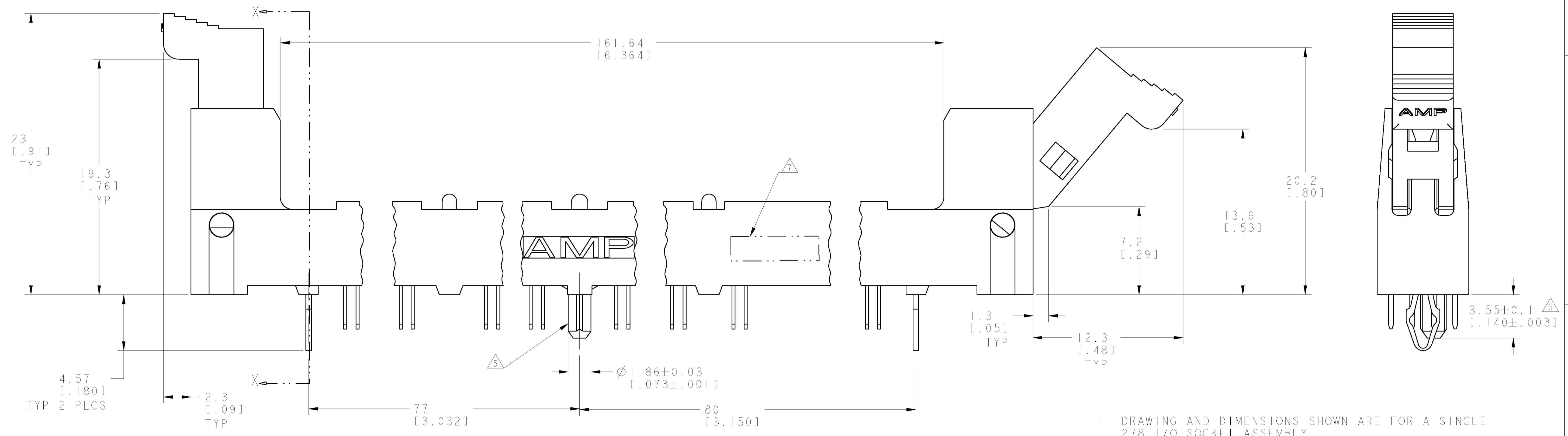
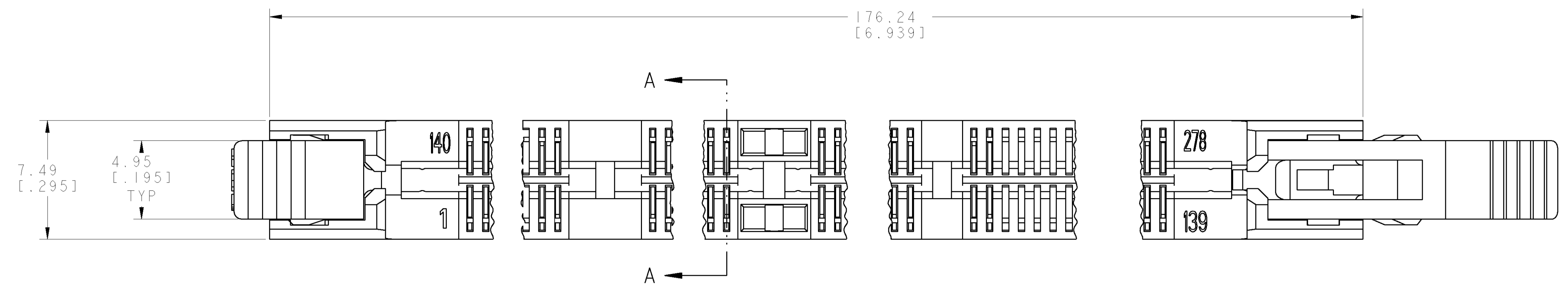


LOC	DIST	REVISIONS				
GP	0	P. LTR	DESCRIPTION	DATE	BY	APPD
		A	RELEASED PER EC 0512-0488-04	10JAN05	MY	SB
		A1	REVISED PER ECO-10-000445	11JAN10	KK	AEG



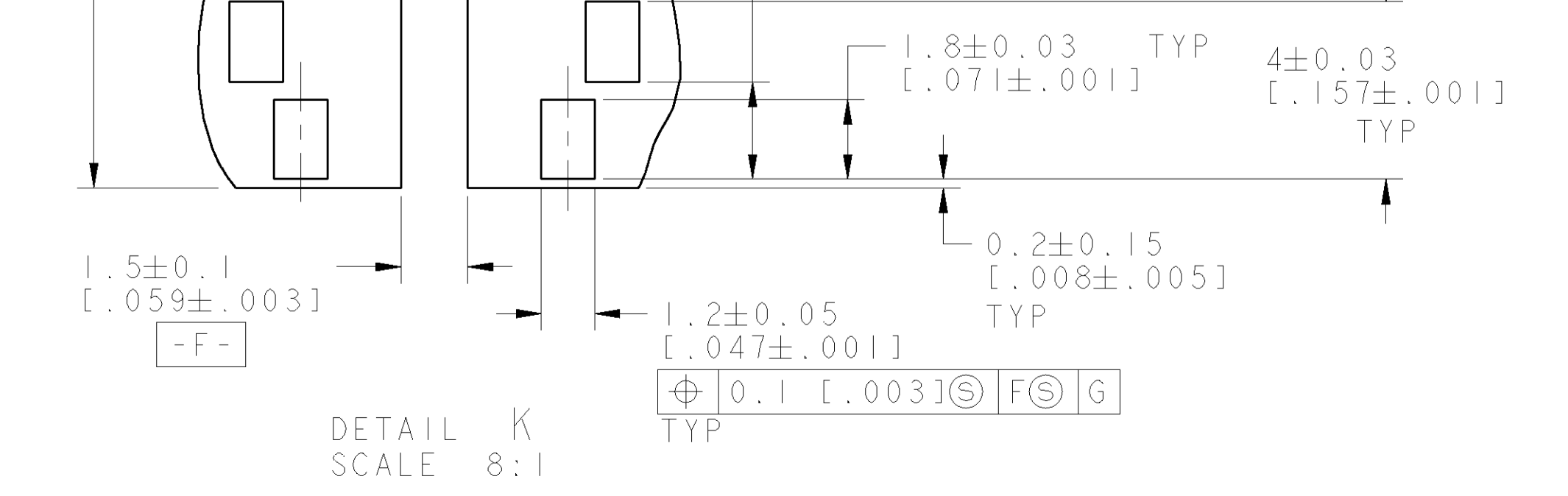
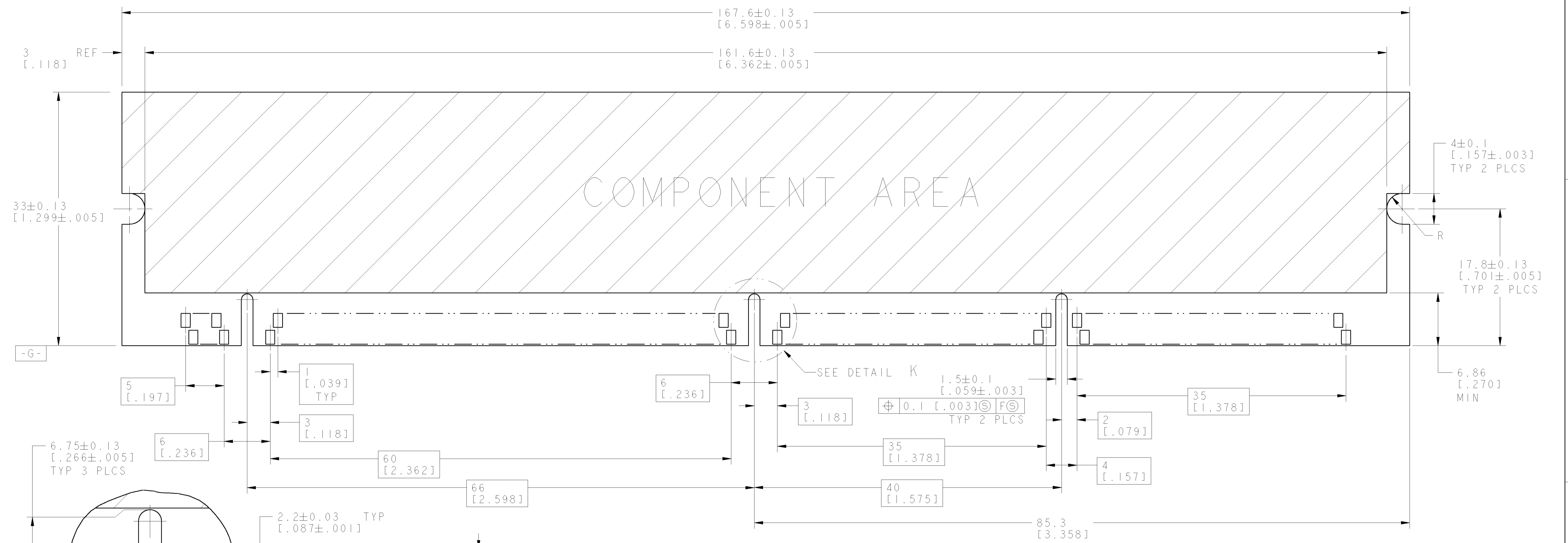
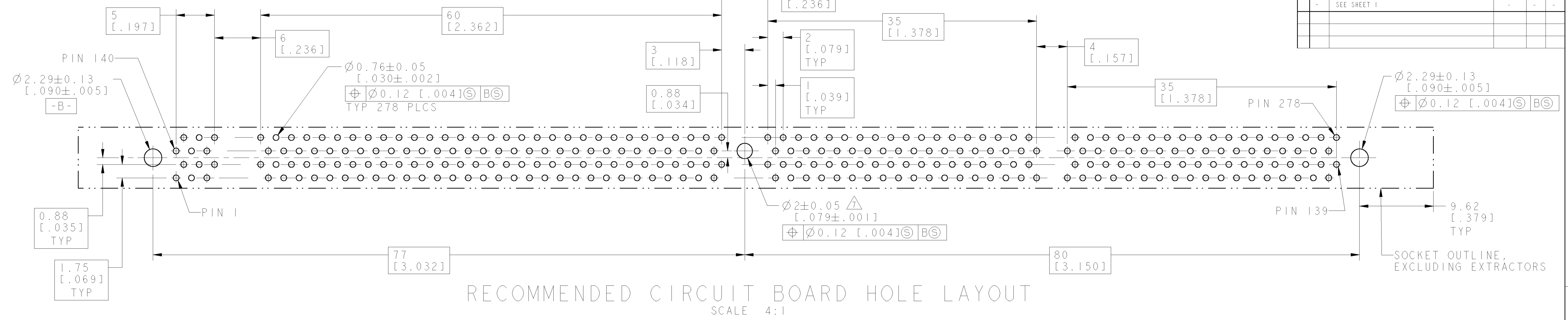
- 1 DRAWING AND DIMENSIONS SHOWN ARE FOR A SINGLE 278 I/O SOCKET ASSEMBLY.
- 2 THE POST DIAMETER REFERENCE DIMENSIONS EXCLUDE THE POSTS' FLUTING FEATURES.
- 3 CONTACT PADS SHALL BE PLATED WITH 0.0008 [.00003] MINIMUM THICK GOLD OVER 0.0038 [.00015] MINIMUM THICK NICKEL.
- 4 MATERIAL:
 HOUSING- HIGH TEMPERATURE NYLON, BLACK.
 EXTRACTORS- HIGH TEMPERATURE NYLON, NATURAL, BLACK.
 CONTACTS- PHOSPHOR BRONZE WITH 0.00076 [.000030] MIN THICK GOLD OVER 0.0038 [.000150] MIN THICK NICKEL IN CONTACT AREA AND 0.0038 [.000150] MIN THICK MATTE TIN OVER 0.00127 [.000050] MIN THICK NICKEL ON SOLDER TAIL.
 BOARDLOCKS, BRASS, AMP 100-86
- 5 5390108-4 DOES NOT HAVE CENTER POST.
- 6 BOARDLOCK DETAIL FOR 5390108-5 ONLY.
- 7 DATE CODE LOCATED APPROX. AS SHOWN.
- 8 OBSOLETE PARTS: OBSOLETE CIS STREAMLINING PER D.RENAUD/D.SINISI

8	OBSOLETE	NATURAL	2.79 [.110]	278	5390108-5
		BLACK	4.19 [.165]	278	5390108-4
		NATURAL	2.79 [.110]	278	5390108-3
		EXTRACTOR	DIM_A	POS	PART NUMBER

DIMENSIONS:		TOLERANCES UNLESS OTHERWISE SPECIFIED:		DWG		tyco	
mm [INCHES]				NO	DATE	TYCO	TYCO ELECTRONICS
0 PLC	±	±0.3 [0.013]		M. YEOMANS	10JAN05	Harrisburg, PA 17105-3608	
1 PLC	±	±0.10 [0.004]		M. YEOMANS	10JAN05		
2 PLC	±	±0.10 [0.004]		S. BURKHOLDER			
3 PLC	±	±0.10 [0.004]					
4 PLC	±	±0.10 [0.004]					
ANGLES	±						
MATERIAL							
FINISH							
CUSTOMER DRAWING				WEIGHT		SCALE	6:1
CUSTOMER DRAWING				SIZE	A	SHEET	1 OF 2
CUSTOMER DRAWING				REVISION		REV	A1

LOC	DIST	REV	DATE	BY	APPD
GP	0				

REVISIONS		DATE	BY	APPD
1	SEE SHEET 1			



DIMENSIONS: mm [INCHES]		TOLERANCES UNLESS OTHERWISE SPECIFIED:		DWN M. YEOMANS 10JAN05		APVD S. RYBKHOLDER 10JAN05		NAME SOCKET ASSEMBLY, 16 BYTE DIMM, 1mm, 278 1/0	
0 PLC	±	1 PLC	±0.3 [.013]	SIZE	CAGE CODE	DRAWING NO	RESTRICTED TO	SCALE 6:1 SHEET 2 OF 2 REV A1	
2 PLC	±0.10 [.004]	3 PLC	±0.10 [.004]	WEIGHT	A100779C=5390108				
4 PLC	±	4 PLCS	±0.010 [.0004]	CUSTOMER DRAWING					
MATERIAL		FINISH		MATERIAL		FINISH			