

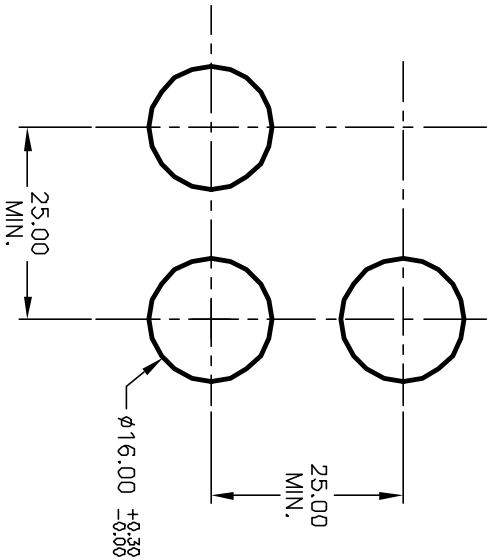
1 0 1 0 2
3 0 0 4
a-L-b (+)

PARTS LIST

ITEM	QTY.	PART NO.	PART DESCRIPTION
1	1	F040006	D16 EE R1 1
2	1	F050411	50-004-11 (Green Neon bulb)
3	1	F051211	50-012-11 (Transparent GRN lens)

SPST
CONTACT CONFIGURATION

- NOTES:
1. ALL DIMENSIONS IN MM
 2. GENERAL TOLERANCE: X.X=±0.4
X.XX=±0.25
 3. RATINGS: 5A @250V AC
8A @125V AC
 - UL, VDE, CSA, Semko, Nemko, Demko, Firmko Approved
 5. LAMP VOLTAGE: 110V AC (NEON BULB)
 6. CONTACT MATERIAL:
COPPER ALLOY w/Silver Plating



E-SWITCH®

REV.	ECN No.	DESCRIPTION	DATE	CHKD
A	12360	RELEASE FOR PRODUCTION	8/12/02	CJB

TITLE	SCALE	DATE	DR	DWG	REV
D16 EE R1 F GRN GRN	1.5:1	8/12/01	CB	XF0490P	A

THE INFORMATION CONTAINED IN THIS DOCUMENT IS PROPRIETARY TO E-SWITCH AND IS NOT TO BE COPIED OR TRANSMITTED