



**L.T.F.**

## DOB AC Line Voltage LED Boards



### Dimmable 25W Linear 599x38mm QLUXDOBAL59925W84LED DOB Series

## QLUX DOB



<b>Wattage</b>	20W
<b>Input</b>	120V AC 50/60 Hz
<b>CRI</b>	93+
<b>CCT Options</b>	2700K - 5000K
<b>Custom CCT</b>	Available
<b>Size</b>	599x38mm
<b>Dimming</b>	ELV, Triac
<b>Optional Dimming</b>	0-10V
<b>Beam Angle</b>	160°



**RoHS**



### FEATURES

- Exceeds California Title 24 requirements
- AC line voltage driver on board module; No external drivers or transformers required
- High efficacy lumen output: >94 lm/W
- Smooth dimming with ELV & Triac dimmers
- Optional 0-10V dimming
- 220-240V, 277V AC input with optional voltage converter
- LM-80 compliant LEDs
- High Color Rendering Index (CRI) 93+

- Tight binning 3 Step Mac Adam Ellipses
- Low heat generation, easy thermal management
- L70 > 60,000 Hours



### APPLICATIONS

- New or retrofit OEM fixtures
- Indoor or outdoor applications
- Architectural and commercial
- Flush mount and recessed fixtures



### AVAILABLE CONFIGURATIONS

Model Number	Suffix	CRI	CCT	Lumens
QLUXDOBAL59925W84LED	- 927	93+	2700K	2200 lm
QLUXDOBAL59925W84LED	- 930		3000K	2200 lm
QLUXDOBAL59925W84LED	- 935		3500K	2264 lm
QLUXDOBAL59925W84LED	- 940		4000K	2300 lm
QLUXDOBAL59925W84LED	- 950		5000K	2300 lm

Custom CCT available

[1] Luminous flux and efficacy are typical value, measured by an integrated sphere at 25°C, tolerance: ± 10%;

[2] Ra/CRI is measured with tolerance: ± 2;

[3] Tolerance of power: ± 1W.



**L.T.F.**

## DOB AC Line Voltage LED Boards

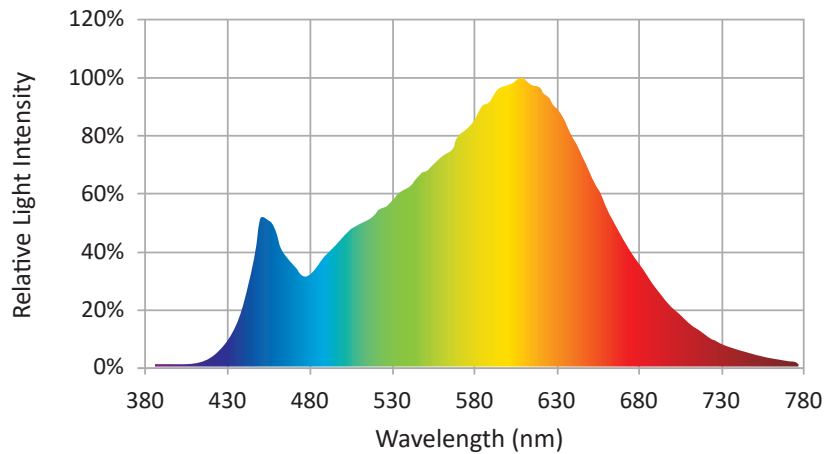


### Dimmable 25W Linear 599x38mm QLUXDOBAL59925W84LED DOB Series

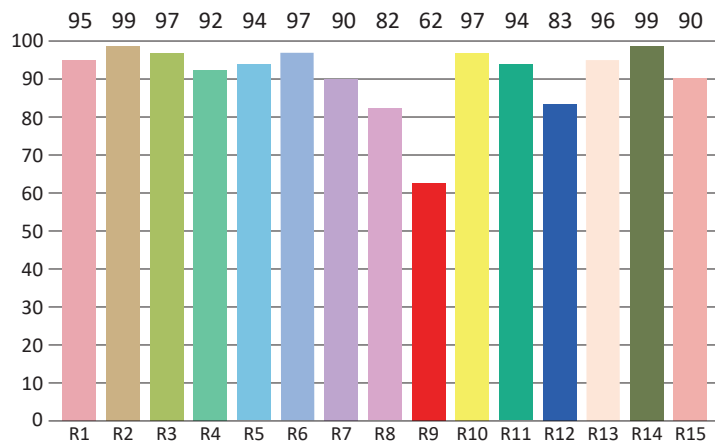
CIE Colorimetric Parameters*	
Chromaticity Coordinates	x=0.4289 y=0.3979
CCT	3047K
Peak Wavelength	620 nm
Dominant Wavelength	581 nm
Rendering Index	93.3
Color Ratio	R=43.9%, G=47.4%, B=8.7%
Half Bandwidth	155.6 nm
Color Purity	0.5051

\* Test result shown based on 3000K CCT, 93 CRI model

### SPECTRORADIOMETRIC CHARACTERISTICS



### CRI TEST RESULTS



R1=95	R2=99	R3=97	R4=92	R5=94	R6=97	R7=90	R8=82
R9=62	R10=97	R11=94	R12=83	R13=96	R14=99	R15=90	

\* Test result shown based on 3000K CCT, 93 CRI model



**L.T.F.**

## DOB AC Line Voltage LED Boards



### Dimmable 25W Linear 599x38mm QLUXDOBAL59925W84LED DOB Series

Photometric Parameters*	
<b>Luminous Flux:</b>	2264.24 lm
<b>Radiant Power:</b>	8283 mW
<b>Efficacy:</b>	≈ 93.9 lm/W

\* Test result shown based on 3000K CCT, 93 CRI model

Electric Parameters	
<b>Voltage</b>	U=120V
<b>Current</b>	I= 0.21A
<b>Power</b>	P=25W
<b>Power Factor</b>	PF≈ 0.93

## ABSOLUTE MAXIMUM RATINGS (Ta=25°C)

Parameter	Symbol	Value	Unit
Voltage	V in	132	Vac
Operating Temperature	---	-35~+50	°C
LED Solder Temperature	Ts	110	°C
Storage Temperature	Tstg	-40~+100	°C
ESD Sensitivity (HBM)	---	±4000	V
Surge	---	2500	Vac

## MECHANICAL SPECIFICATIONS

