

GTXO-253T

1.8V ~ 3.6V Ultra-tight Stability TCXO

- Ideally suited for tight stability applications including GPS
- $\pm 0.5\text{ppm}$ frequency stability option
- Supply voltage from 1.8V ~ 3.6V
- Low power consumption
- Miniature SM package



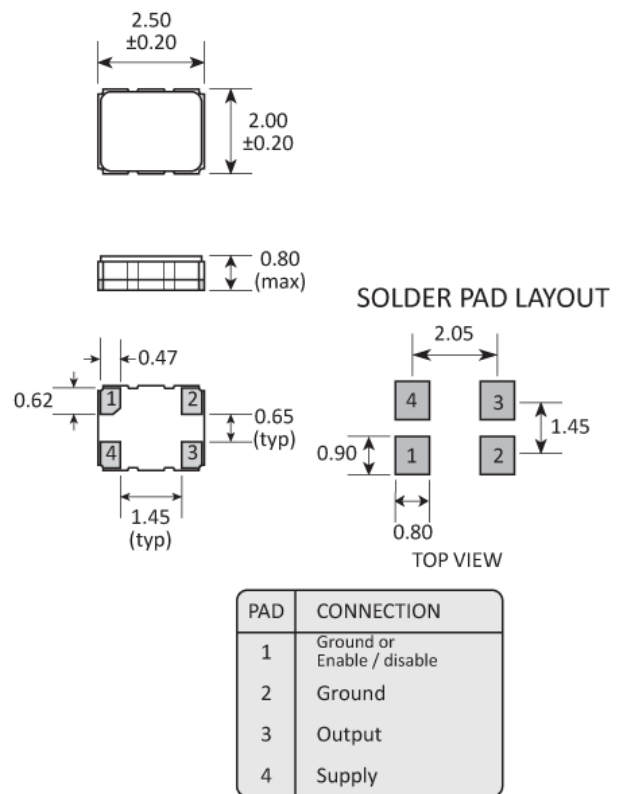
CONFIGURABLE OPTIONS

Parameter	Option Code
Frequency	
Frequency stability	
Any	
$\pm 2.5\text{ppm}$	J
$\pm 2.0\text{ppm}$	H
$\pm 1.5\text{ppm}$	G
$\pm 1.0\text{ppm}$	F
$\pm 0.5\text{ppm}$	E
Temperature range	
Any	
-10 to +60°C	C
-20 to +75°C	N
-30 to +85°C	S
-40 to +85°C	I
Enable / disable function	
Any	
None (pad 1 Ground)	
Control via pad 1	E
Supply voltage (V_{DD})	
+2.8V	

SPECIFICATIONS

Frequency range	10.0 ~ 52.0MHz
Dimensions	2.5 x 2.0 x 0.8mm
Storage temperature range	-40 to +85°C
Supply voltage stability	±0.2ppm, $V_{DD} \pm 5\%$
Load stability	±0.2ppm, $Z_L \pm 10\%$
Frequency slope	±0.05ppm/°C over -30+85°C
Ageing	±1.0ppm max first year
Supply current	1.5~2.0mA max
Output waveform	Clipped sine, 0.8V p-p, +DC offset
Test load (Z_L)	10kΩ // 10pF
Start up time	3ms max
Harmonics	-5dBc max
Phase noise	-130dBc/Hz @ 1kHz
Frequency tolerance @ 25°C	±2.0ppm max, 60mins after reflow

PACKAGE DRAWING



Dimensions in mm

ORDERING INFORMATION

To request a quotation for the GTXO-253T please use the configurable options form to choose the options you require and then submit your configured product to our team. Our expert advisers are always happy to help with your requirements and can be contacted on +44 1460 256 100 or at sales@golledge.com.

Following product selection you will be issued with a seven character Golledge part number. Your Golledge part number is the internationally accepted Golledge manufacturing part number (MPN) that should be used for all project documentation, including bills of materials (BoMs) and purchase orders.

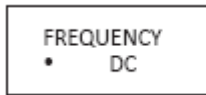
If you have any queries regarding any of our documentation our dedicated sales team will be happy to help.

ENABLE / DISABLE FUNCTION

Input (pad 1)	Output (pad 3)
'1' level	Enabled
'0' level	Disabled

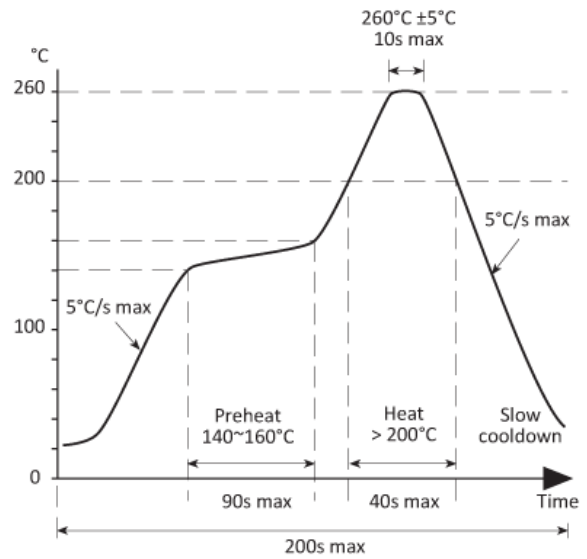
Note: Pad 1 should not be allowed to float

MARKING

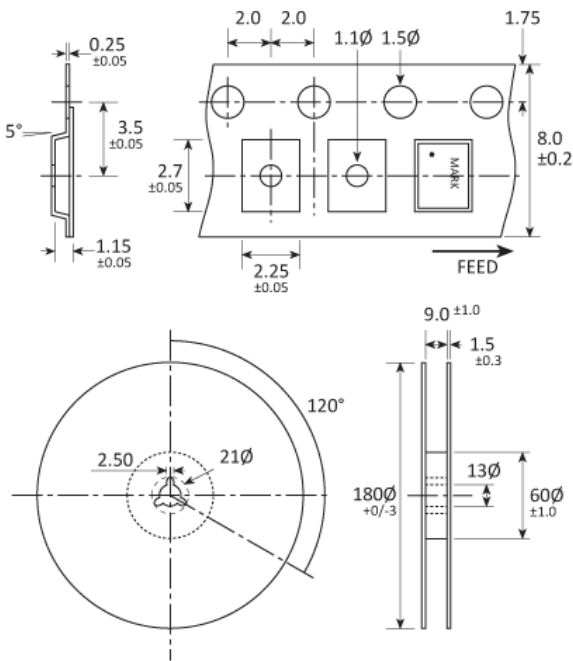


• Pin 1
 Marking type: Laser
 DC = Date code

SOLDERING PROFILE



TAPE & REEL SPECIFICATION



Dimensions in mm

HANDLING & STORAGE



Human Body Model (HBM) 1A (250V to <500V)




Moisture Sensitivity Level (MSL): 1 (or not applicable)


CONSTRUCTION


Ceramic body with gold-plated pads
Metal lid, seam sealed


COMPLIANCE


Please refer to our **DOCUMENTS** section for more information.


 Lead-free (< 0.1% by weight)

 RoHS compliant with no exemptions.

 REACH compliant.

 Free of conflict minerals.

 Free from halogens.

 Free from ozone-depleting substances.