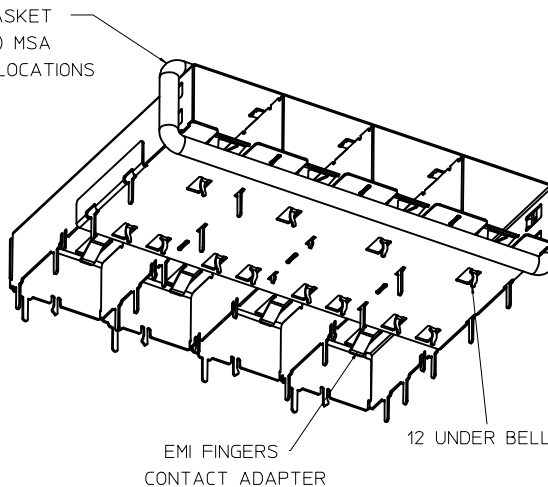
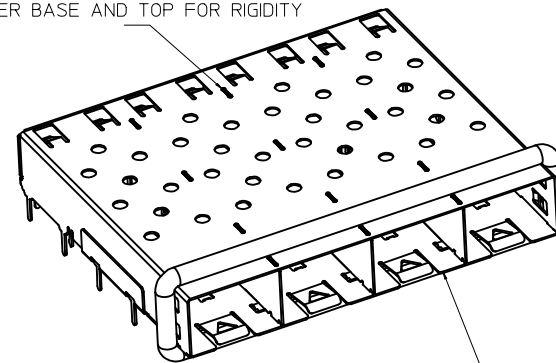


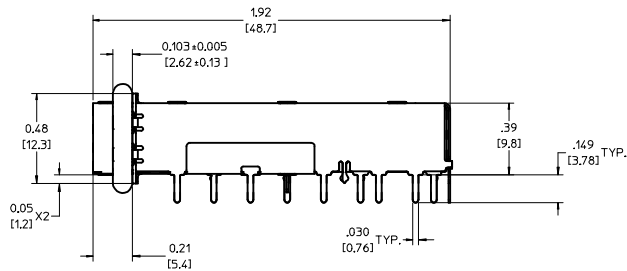
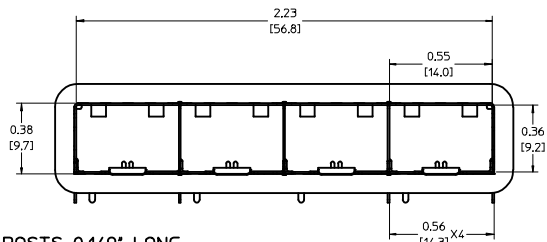
360° ELASTOMER GASKET
 COMPLIES WITH (SFP) MSA
 BOARD AND BEZEL LOCATIONS



INNER WALL TABS ARE COINED
 OVER BASE AND TOP FOR RIGIDITY



DIMENSIONS OF EACH INNER CAGE DESIGNED
 TO FUNCTION WITH SMALL FORM-FACTOR
 PLUGGABLE (SFP) TRANSCEIVER



NOTES:

1. SOLDER POSTS 0.149" LONG.

2. MATERIAL: COPPER ALLOY
 PLATING: NONE

NOTE: A NICKEL PLATED VERSION IS AVAILABLE.
 REFER TO DOCUMENT SD-74728-421.

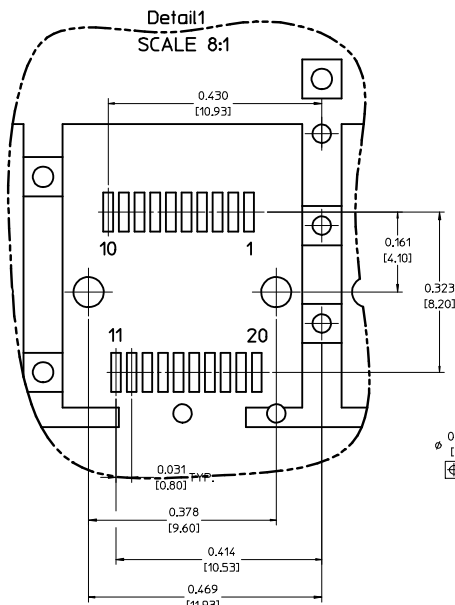
3. REFERENCE DOCUMENTS:

PRODUCT SPECIFICATION: PS-74728-000
 COSMETIC SPECIFICATIONS: WI-HP-7-2774 AND WI-HPA-7-0093

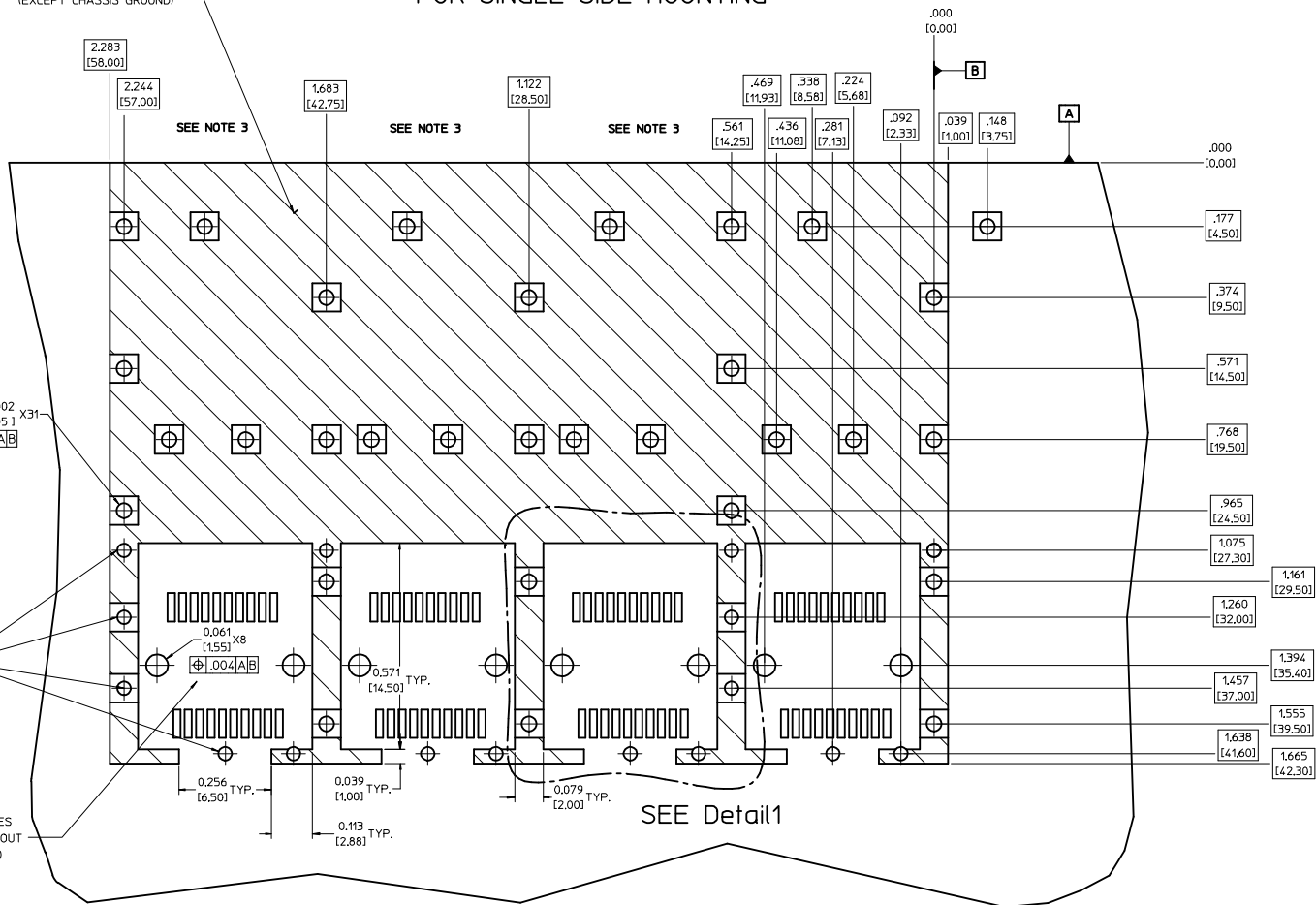
4. THIS PART MEETS THE RESTRICTION OF HAZARDOUS SUBSTANCES IN
 ELECTRICAL AND ELECTRONIC EQUIPMENT (ROHS) DIRECTIVE (2002/95/EC).

ENTER DESCRIPTION IEC NO.: USY2006-0079 DRAWN BY: KSI MONSON 2006/01/17 CHECKED BY: CHKO BRUSSELL 2006/01/20 APPROVED BY: APPR BRUSSELL 2006/01/25	QUALITY SYMBOLS	GENERAL TOLERANCES (UNLESS SPECIFIED):	DIMENSION STYLE	SCALE	DESIGN UNITS	THIRD ANGLE PROJECTION
	▽=0 ▽=0	4 PLACES ±--- ±--- 3 PLACES ±--- ±.005 2 PLACES ±0.13 ±.01 1 PLACE ±0.25 ±--- ANGULAR ± 1°	INCH IN/MM	3:1	METRIC	DRAWN BY: KSI MONSON 2003/11/01 CHECKED BY: BRUSSELL 2003/11/01 APPROVED BY: BRUSSELL 2003/11/01
	DRAFT WHERE APPLICABLE MUST REMAIN WITHIN DIMENSIONS	MATERIAL NO. 739270412	DOCUMENT NO. SD-73927-412	TITLE 1X4 SFP GANGED CAGE ASSEMBLY W/ ELASTOMER GASKET, SOLDER POST		
	SIZE D	THIS DRAWING CONTAINS INFORMATION THAT IS PROPRIETARY TO MOLEX INCORPORATED AND SHOULD NOT BE USED WITHOUT WRITTEN PERMISSION		MOLEX INCORPORATED SHEET NO. 1 OF 4		

PCB LAYOUT FOR SINGLE SIDE MOUNTING



CROSS-HATCHED AREA DENOTES
COMPONENT AND TRACE KEEP-OUT
(EXCEPT CHASSIS GROUND)



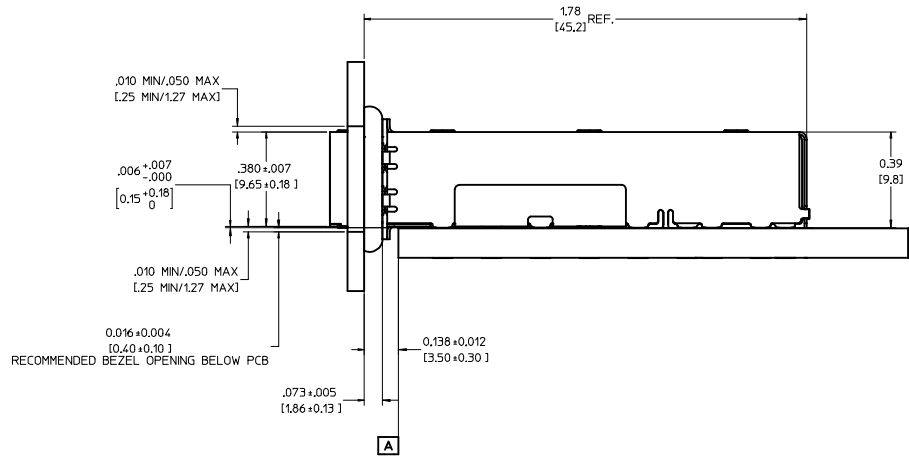
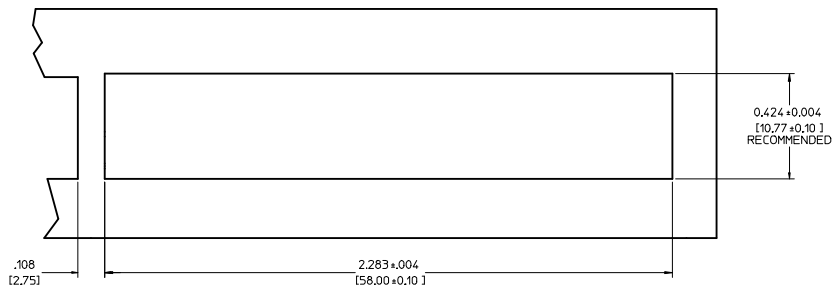
NOTES:

1. PADS AND VIAS GO TO CHASSIS GROUND. (34 PLACES).
RECOMMENDED PADS TO BE 2mm SQUARE.
2. PLATING OPTIONAL FOR THROUGH HOLES. (12 PLACES).
3. RECOMMENDED PLATING INCLUDES HASL, IMMERSION (GOLD, SILVER, OR TIN), AND OSP.
4. HOLE PATTERN REPEATS FOR EACH PORT,
SPACING BETWEEN PORTS IS 14.25mm.
5. CONNECTOR PAD LAYOUT PER SFP MSA. WILL ACCOMODATE MOLEX
CONNECTOR SERIES 74441 OR EQUIVALENT.

ENTER DESCRIPTION EC NO: US72006-0079 DRAWN BY: KSI MONSO CHYKORUSSELL APPROVED BY: BRUSSELL DATE: 2006/01/17 DATE: 2006/01/20 DATE: 2006/01/25	QUALITY SYMBOLS ▽=0 ▽=0 ANGLULAR ± 1°	GENERAL TOLERANCES (UNLESS SPECIFIED): 4 PLACES ± .--- INCH 3 PLACES ± .--- INCH 2 PLACES ± 0.13 ± .01 1 PLACE ± 0.25 ± .---	DIMENSION STYLE IN/MM SCALE 6:1 DESIGN UNITS METRIC	TITLE 1X4 SFP GANGED CAGE ASSEMBLY W/ ELASTOMER GASKET, SOLDER POST MOLEX INCORPORATED	SHEET NO. 2 OF 4	
		DRAFT WHERE APPLICABLE MUST REMAIN WITHIN DIMENSIONS	MATERIAL NO. 739270412	DOCUMENT NO. SD-73927-412		
		THIS DRAWING CONTAINS INFORMATION THAT IS PROPRIETARY TO MOLEX INCORPORATED AND SHOULD NOT BE USED WITHOUT WRITTEN PERMISSION				

20 19 18 17 16 15 14 13 12 11 10 9 8 7 6 5 4 3 2 1

BEZEL AND BOARD POSITION DIMENSIONS FOR SINGLE SIDE MOUNTING

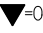
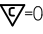
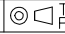


ENTER DESCRIPTION EC NO: USY2006-0079 DRAWN BY: DRANKS IMONSON 2006/01/17 CHECKED BY: CHYD BRUSSELL 2006/01/20 APPR: BRUSSELL 2006/01/25 REV DESCRIPTION	QUALITY SYMBOLS	GENERAL TOLERANCES (UNLESS SPECIFIED)	DIMENSION STYLE	SCALE	DESIGN UNITS	THIRD ANGLE PROJECTION
	▽=0 ▽=0	mm INCH 4 PLACES ± --- ± --- 3 PLACES ± --- ± .005 2 PLACES ± 0.13 ± .01 1 PLACE ± 0.25 ± --- ANGULAR ± 1°	IN/MM	4:1	METRIC	DRAWN BY: KS IMONSON 2003/11/01 CHECKED BY: BRUSSELL 2003/11/01 APPROVED BY: BRUSSELL 2003/11/01 MATERIAL NO: 739270412 DOCUMENT NO: SD-73927-412
	DRAFT WHERE APPLICABLE MUST REMAIN WITHIN DIMENSIONS		TITLE: 1X4 SFP GANGED CAGE ASSEMBLY W/ ELASTOMER GASKET, SOLDER POST MOLEX INCORPORATED		SHEET NO. 3 OF 4	
	THIS DRAWING CONTAINS INFORMATION THAT IS PROPRIETARY TO MOLEX INCORPORATED AND SHOULD NOT BE USED WITHOUT WRITTEN PERMISSION					

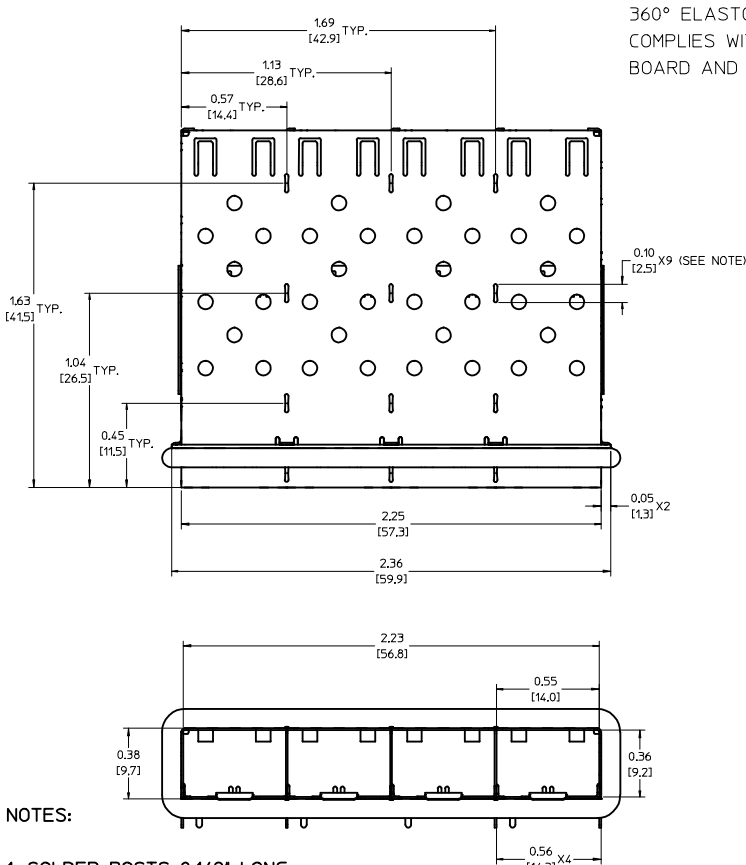
19 18 17 16 15 14 13 12 11 10 9 8 7 6 5 4 3 2 1

20 19 18 17 16 15 14 13 12 11 10 9 8 7 6 5 4 3 2 1

DATE	REV	CHANGES	COMMENTS
2003/11/11	1	PRELIMINARY DOCUMENT	N/A
2004/03/25	A	INITIAL RELEASE	N/A
2004/10/09	B	UPDATED VIEWS	DOCUMENT CHANGE ONLY
2005/10/07	C	ADDED PCB AND BEZEL DETAILS. UPDATED NOTES.	DOCUMENT CHANGE ONLY

ENTER DESCRIPTION IEC NO: USY2006-0079 DRAWN BY: KSI MONSON 2006/01/17 CHECKED BY: CHYKORUSSELL 2006/01/20 APPR: BRUSSELL 2006/01/25	QUALITY SYMBOLS  = 0  = 0	GENERAL TOLERANCES (UNLESS SPECIFIED)		DIMENSION STYLE IN/MM	SCALE 1:1	DESIGN UNITS METRIC	 THIRD ANGLE PROJECTION		
		4 PLACES ± --- ± --- 3 PLACES ± --- ± .005 2 PLACES ± 0.13 ± .01 1 PLACE ± 0.25 ± ---	mm INCH	DRAWN BY: KSI MONSON DATE: 2003/11/01 CHECKED BY: BRUSSELL DATE: 2003/11/01 APPROVED BY: BRUSSELL DATE: 2003/11/01	TITLE 1X4 SFP GANGED CAGE ASSEMBLY W/ ELASTOMER GASKET, SOLDER POST				
		ANGULAR ± 1 °		MATERIAL NO. 739270412		DOCUMENT NO. SD-73927-412		SHEET NO. 4 OF 4	
		DRAFT WHERE APPLICABLE MUST REMAIN WITHIN DIMENSIONS		THIS DRAWING CONTAINS INFORMATION THAT IS PROPRIETARY TO MOLEX INCORPORATED AND SHOULD NOT BE USED WITHOUT WRITTEN PERMISSION					

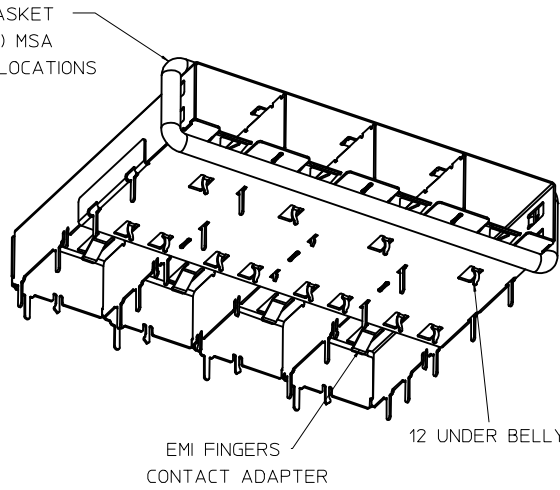
19 18 17 16 15 14 13 12 11 10 9 8 7 6 5 4 3 2 1



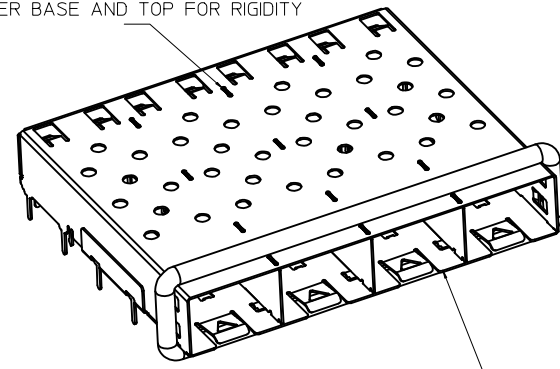
NOTES:

1. SOLDER POSTS 0.149" LONG.
2. MATERIAL: COPPER ALLOY
PLATING: NONE
- NOTE: A NICKEL PLATED VERSION IS AVAILABLE.
REFER TO DOCUMENT SD-74728-421.
3. REFERENCE DOCUMENTS:
PRODUCT SPECIFICATION: PS-74728-000
COSMETIC SPECIFICATIONS: WI-HP-7-2774 AND WI-HPA-7-0093
4. THIS PART MEETS THE RESTRICTION OF HAZARDOUS SUBSTANCES IN ELECTRICAL AND ELECTRONIC EQUIPMENT (ROHS) DIRECTIVE (2002/95/EC).

360° ELASTOMER GASKET COMPLIES WITH (SFP) MSA BOARD AND BEZEL LOCATIONS

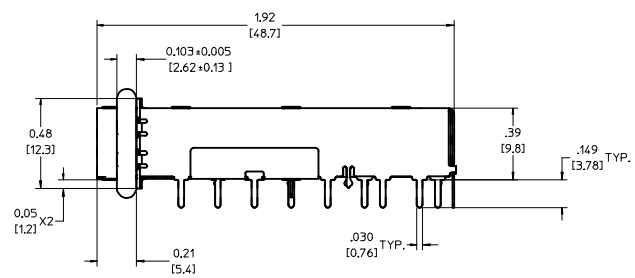


INNER WALL TABS ARE COINED OVER BASE AND TOP FOR RIGIDITY



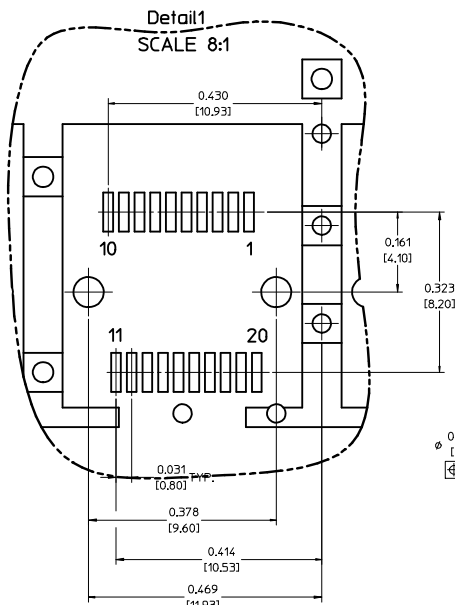
12 UNDER BELLY EMI PINS

DIMENSIONS OF EACH INNER CAGE DESIGNED TO FUNCTION WITH SMALL FORM-FACTOR PLUGGABLE (SFP) TRANSCEIVER

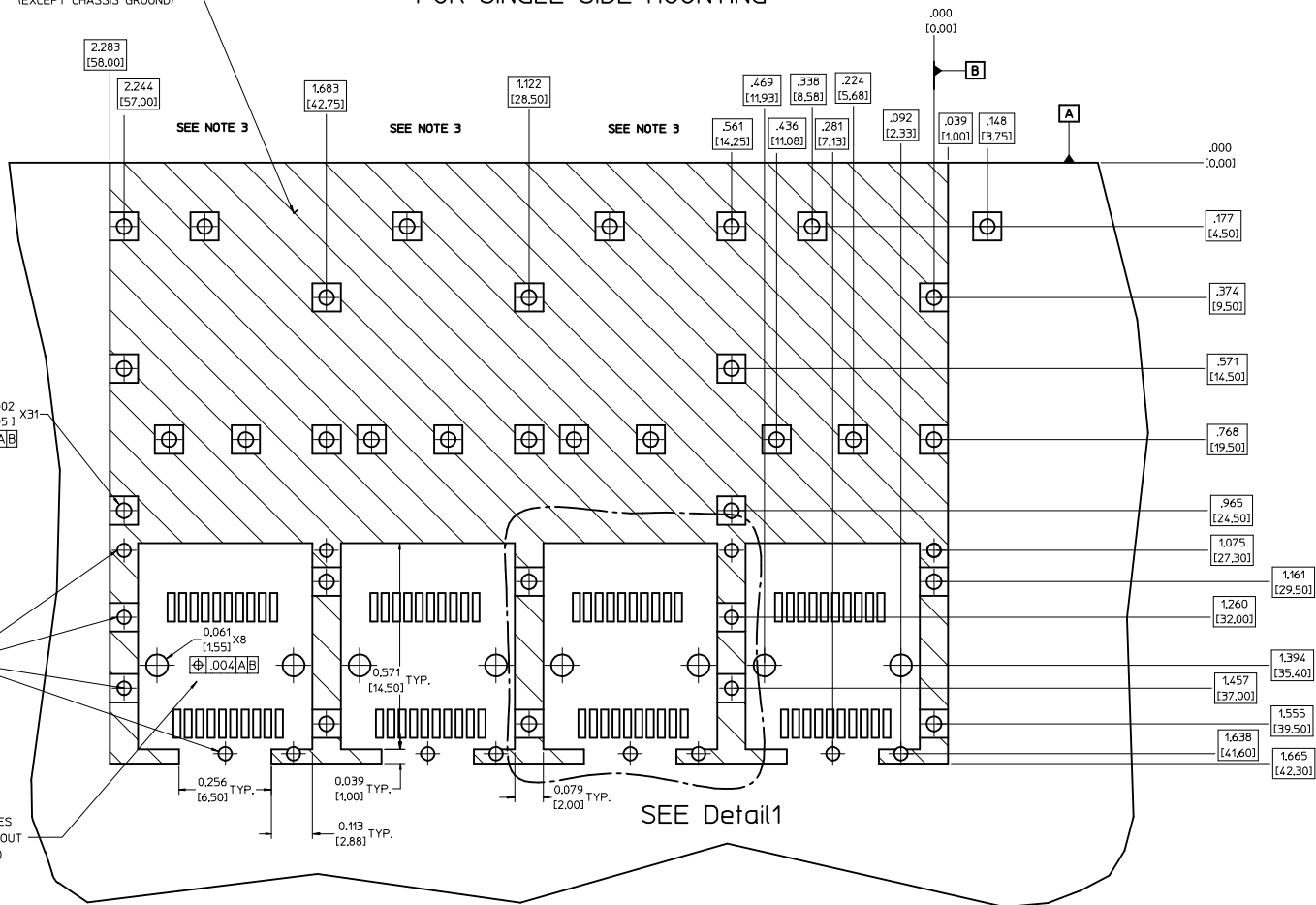


ENTER DESCRIPTION EC NO: USY2006-0079 DRAWN BY: KSI MONSON 2006/01/17 CHKD BY: BRUSSELL 2006/01/20 APPR BY: BRUSSELL 2006/01/25	QUALITY SYMBOLS ▽=0 ▽=0	GENERAL TOLERANCES (UNLESS SPECIFIED): INCH 4 PLACES ± --- ± --- 3 PLACES ± --- ± .005 2 PLACES ± 0.13 ± .01 1 PLACE ± 0.25 ± --- ANGULAR ± 1°	DIMENSION STYLE IN/MM DRAWN BY: KSI MONSON DATE: 2003/11/01 CHECKED BY: BRUSSELL DATE: 2003/11/01 APPROVED BY: BRUSSELL DATE: 2003/11/01	SCALE: 3:1 DESIGN UNITS: METRIC THIRD ANGLE PROJECTION	TITLE 1X4 SFP GANGED CAGE ASSEMBLY W/ ELASTOMER GASKET, SOLDER POST
	DRAFT WHERE APPLICABLE MUST REMAIN WITHIN DIMENSIONS		MATERIAL NO: 739270412 DOCUMENT NO: SD-73927-412	MOLEX INCORPORATED	SHEET NO. 1 OF 4
	THIS DRAWING CONTAINS INFORMATION THAT IS PROPRIETARY TO MOLEX INCORPORATED AND SHOULD NOT BE USED WITHOUT WRITTEN PERMISSION				
	SIZE D				

PCB LAYOUT FOR SINGLE SIDE MOUNTING



CROSS-HATCHED AREA DENOTES COMPONENT AND TRACE KEEP-OUT (EXCEPT CHASSIS GROUND)



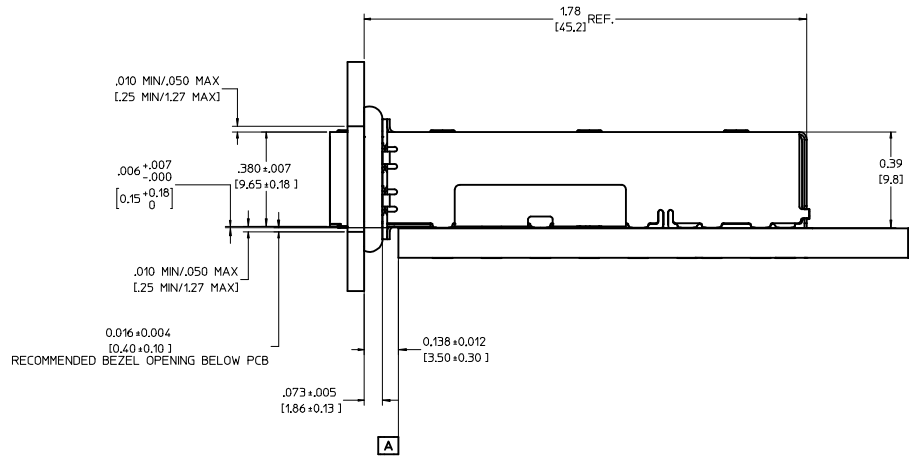
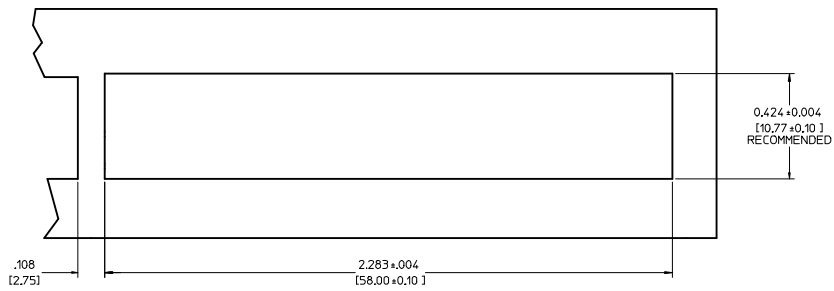
NOTES:

1. PADS AND VIAS GO TO CHASSIS GROUND. (34 PLACES).
RECOMMENDED PADS TO BE 2mm SQUARE.
2. PLATING OPTIONAL FOR THROUGH HOLES. (12 PLACES).
3. RECOMMENDED PLATING INCLUDES HASL, IMMERSION (GOLD, SILVER, OR TIN), AND OSP.
4. HOLE PATTERN REPEATS FOR EACH PORT,
SPACING BETWEEN PORTS IS 14.25mm.
5. CONNECTOR PAD LAYOUT PER SFP MSA. WILL ACCOMODATE MOLEX CONNECTOR SERIES 74441 OR EQUIVALENT.

ENTER DESCRIPTION EC NO.: US72006-0079 DRAWN BY: KSI MONSO CHYKORUSSELL APPROVED BY: BRUSSELL DATE: 2006/01/17 DATE: 2006/01/20 DATE: 2006/01/25	QUALITY SYMBOLS ▽=0 ▽=0	GENERAL TOLERANCES (UNLESS SPECIFIED): 4 PLACES ±.005 ±.005 3 PLACES ±.010 ±.005 2 PLACES ±.015 ±.010 1 PLACE ±.020 ±.010 ANGULAR ± 1°	DIMENSION STYLE IN/MM SCALE 6:1 DESIGN UNITS METRIC	THIRD ANGLE PROJECTION TITLE 1X4 SFP GANGED CAGE ASSEMBLY W/ ELASTOMER GASKET, SOLDER POST	MOLEX INCORPORATED
		DRAFT WHERE APPLICABLE MUST REMAIN WITHIN DIMENSIONS	MATERIAL NO. 739270412	DOCUMENT NO. SD-73927-412	SHEET NO. 2 OF 4

20 19 18 17 16 15 14 13 12 11 10 9 8 7 6 5 4 3 2 1

BEZEL AND BOARD POSITION DIMENSIONS FOR SINGLE SIDE MOUNTING

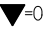
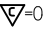
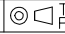



ENTER DESCRIPTION EC NO: USY2006-0079 DRAWN BY: DRANKS IMONSON 2006/01/17 CHECKED BY: CHYD BRUSSELL 2006/01/20 APPR: BRUSSELL 2006/01/25 REV DESCRIPTION	QUALITY SYMBOLS	GENERAL TOLERANCES (UNLESS SPECIFIED)	DIMENSION STYLE	SCALE	DESIGN UNITS	THIRD ANGLE PROJECTION
	=0 =0	mm INCH 4 PLACES ± --- ± --- 3 PLACES ± --- ± .005 2 PLACES ± 0.13 ± .01 1 PLACE ± 0.25 ± --- ANGULAR ± 1°	IN/MM	4:1	METRIC	DRAWN BY: KS IMONSON 2003/11/01 CHECKED BY: BRUSSELL 2003/11/01 APPROVED BY: BRUSSELL 2003/11/01 MATERIAL NO: 739270412 DOCUMENT NO: SD-73927-412
	DRAFT WHERE APPLICABLE MUST REMAIN WITHIN DIMENSIONS		MOLEX INCORPORATED		SHEET NO. 3 OF 4	
	THIS DRAWING CONTAINS INFORMATION THAT IS PROPRIETARY TO MOLEX INCORPORATED AND SHOULD NOT BE USED WITHOUT WRITTEN PERMISSION					

19 18 17 16 15 14 13 12 11 10 9 8 7 6 5 4 3 2 1

20 19 18 17 16 15 14 13 12 11 10 9 8 7 6 5 4 3 2 1

DATE	REV	CHANGES	COMMENTS
2003/11/11	1	PRELIMINARY DOCUMENT	N/A
2004/03/25	A	INITIAL RELEASE	N/A
2004/10/09	B	UPDATED VIEWS	DOCUMENT CHANGE ONLY
2005/10/07	C	ADDED PCB AND BEZEL DETAILS. UPDATED NOTES.	DOCUMENT CHANGE ONLY

ENTER DESCRIPTION IEC NO: USY2006-0079 DRAWN BY: KSI MONSON 2006/01/17 CHYKORUSSELL 2006/01/20 APPR: BRUSSELL 2006/01/25	QUALITY SYMBOLS  = 0  = 0	GENERAL TOLERANCES (UNLESS SPECIFIED)		DIMENSION STYLE IN/MM	SCALE 1:1	DESIGN UNITS METRIC	 THIRD ANGLE PROJECTION		
		4 PLACES ± --- ± --- 3 PLACES ± --- ± .005 2 PLACES ± 0.13 ± .01 1 PLACE ± 0.25 ± ---	mm INCH	DRAWN BY KSI MONSON	DATE 2003/11/01	TITLE 1X4 SFP GANGED CAGE ASSEMBLY W/ ELASTOMER GASKET, SOLDER POST			
		ANGULAR ± 1 °	DRAFT WHERE APPLICABLE MUST REMAIN WITHIN DIMENSIONS	CHECKED BY BRUSSELL	DATE 2003/11/01	APPROVED BY BRUSSELL 2003/11/01			
		MATERIAL NO. 739270412	DOCUMENT NO. SD-73927-412	 MOLEX INCORPORATED		SHEET NO. 4 OF 4			

19 18 17 16 15 14 13 12 11 10 9 8 7 6 5 4 3 2 1