

CUSTOMER PRINT

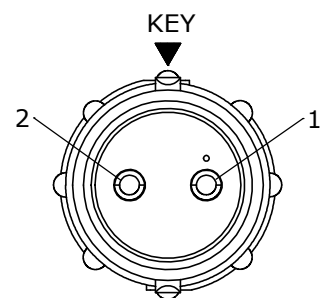
PART NUMBER: W8282-XPG-P-3XX

NOTES:

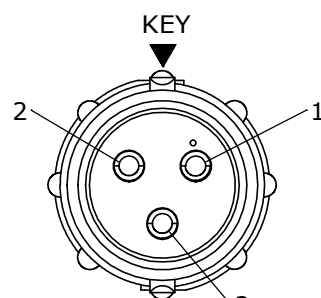
1. ALL PARTS ARE BULK PACKED
2. CONTACTS ASSEMBLED INTO CONNECTOR
3. DIMENSIONS ARE REFERENCE EXCEPT THOSE WITH A TOLERANCE

ASS'Y P/N	CABLE O.D.
W8282-XPG-P-3DC	DAISY CHAIN
W8282-XPG-P-311	.09-.14 [2.3-3.5]
W8282-XPG-P-315	.15-.17 [3.8-4.3]
W8282-XPG-P-318	.18-.20 [4.6-5.1]
W8282-XPG-P-321	.21-.23 [5.3-5.8]

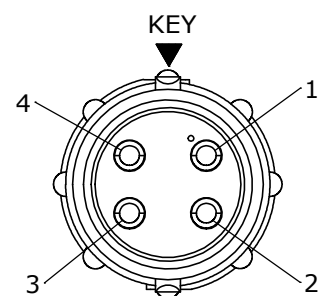
ASS'Y P/N	NO. OF CONTACTS
W8282-2PG-P-3XX	2-#20
W8282-3PG-P-3XX	3-#20
W8282-4PG-P-3XX	4-#20
W8282-5PG-P-3XX	5-#20
W8282-6PG-P-3XX	6-#20
W8282-7PG-P-3XX	7-#20
W8282-8PG-P-3XX	8-#20
W8282-XPG-P-3XX	



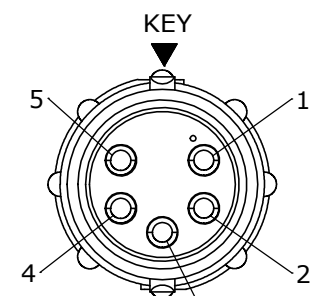
WIRE VIEW
W8282-2PG-P-3XX



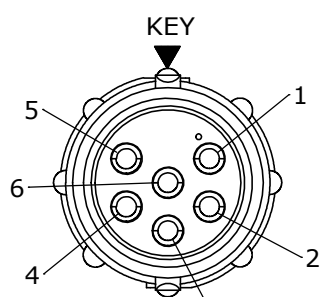
WIRE VIEW
W8282-3PG-P-3XX



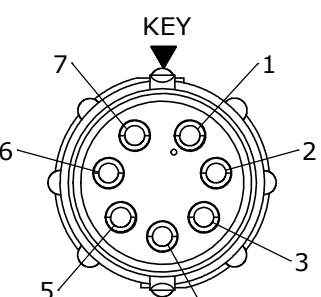
WIRE VIEW
W8282-4PG-P-3XX



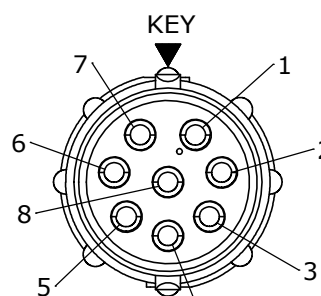
WIRE VIEW
W8282-5PG-P-3XX



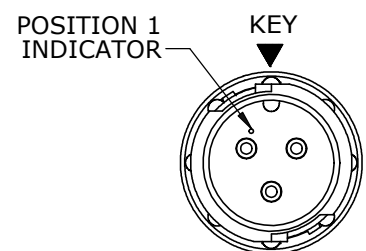
WIRE VIEW
W8282-6PG-P-3XX



WIRE VIEW
W8282-7PG-P-3XX

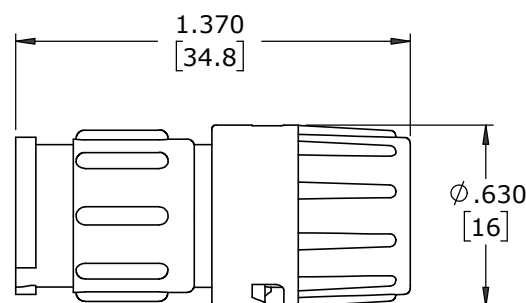


WIRE VIEW
W8282-8PG-P-3XX



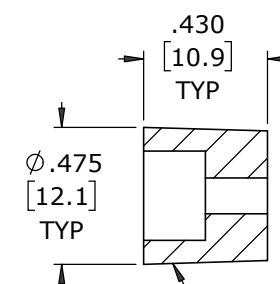
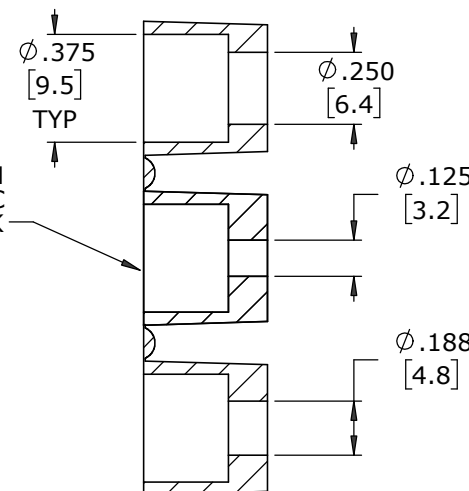
FACE VIEW
W8282-3PG-P-3XX SHOWN

INLINE CONNECTOR, MALE
MAT'L: UV PBT, BLACK

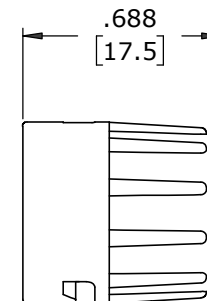


SHOWN ASSEMBLED
FOR CUSTOMER REFERENCE

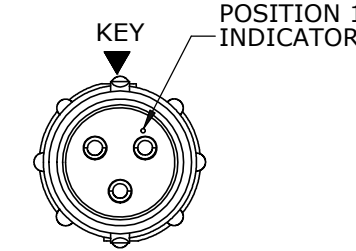
GROMMET, DAISY CHAIN
FOR W8282-XPG-P-3DC
MAT'L: RUBBER, BLACK



GROMMET
MAT'L: SANTOPRENE, BLACK
SIZE: SEE CHART



BACKSHELL
MAT'L: UV PBT, BLACK



WIRE VIEW
W8282-3PG-P-3XX SHOWN

(2-8) #20 PIN CONTACTS, SOLDER
MAT'L: GOLD PLATED COPPER ALLOY

CUSTOMER APPROVAL

THIS DOCUMENT CONTAINS CONFIDENTIAL INFORMATION PROPRIETARY TO CONXALL CORPORATION. ANY REPRODUCTION, DISCLOSURE, OR USE OF THIS DOCUMENT /INFORMATION IS EXPRESSLY PROHIBITED UNLESS AUTHORIZED IN WRITING BY CONXALL CORPORATION.

APPROVED BY: _____
DATE: _____

A	MA	07-08-20	DRAWING CREATED PER PDR 16014-10
REV.	INIT.	DATE	DESCRIPTION
	MA	07-08-20	ORIG. DRAWN BY: DATE: 07-08-20
ALL INFORMATION ILLUSTRATED IS THE PROPERTY OF "CONXALL CORPORATION". UNAUTHORIZED DUPLICATION OR DISTRIBUTION OF THIS DOCUMENT IS PROHIBITED.			<p>601 E. WILDWOOD VILLA PARK, IL 60181</p>
ALL UNITS ARE IN FEET, INCHES, FRACTION OF INCHES AND DECIMALS.			
APPROVED BY:		TITLE: IN-LINE CONNECTOR ASS'Y (2-8) #20 PIN CONTACTS, SOLDER INSTA-CLICK™ MINI-CON-X STANDARD PRODUCT	
SCALE	SIZE	SHEET	CUSTOMER:
NTS	B	1 OF 1	W8282-XPG-P-3XX
FILE:	DIRECTORY:	PART NUMBER:	REV
W8282-XPG-P-3XX	SLW	W8282-XPG-P-3XX	A

DIMENSIONS IN BRACKETS [] ARE IN MILLIMETERS UNLESS INDICATED

RoHS COMPLIANT

— CRITICAL CHARACTERISTIC FLAG PER SPEC. XXXX