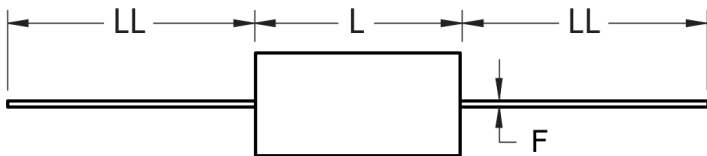
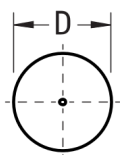


### FRONT VIEW



### SIDE VIEW



Click [here](#) for the 3D model.

#### Dimensions

D	16mm MAX
L	33mm MAX
LL	20mm MIN
F	0.8mm +/-0.05mm

#### Packaging Specifications

Packaging	T&R
Packaging Quantity	250

#### General Information

Series	A50
Dielectric	Metallized Polyester
Style	Axial
Features	Automotive Grade
RoHS	Yes
Lead	Wire Leads
Qualifications	AEC-Q200
AEC-Q200	Yes
Miscellaneous	Above 85C DC And AC Voltage Derating Is 1.25%/C. maxK0 = 20000.

#### Specifications

Capacitance	0.22 $\mu$ F
Capacitance Tolerance	5%
Voltage AC	250 VAC
Voltage DC	1000 VDC, 750 VDC (105C)
Temperature Range	-55/+105°C
Rated Temperature	85°C
Dissipation Factor	0.8% 1kHz, 1.2% 10kHz
Insulation Resistance	30 GOhms
Max dV/dt	10 V/us
Inductance	7 nH