

Feed-through terminal, Screw connection, Mounting type: Mounting rail TS 35/7.5 and TS 32, Rated cross-section: 95 mm², Width: 25 mm, Colour: Black-yellow

Business data

Packaging unit	10
Quantity unit	PC
Weight per piece (not including packaging)	179 g
Weight per piece (including packaging)	189.6 g
Unit of weight	G
Customs number	85369010
Country of origin	CZ
Product description	Feed-through terminal

1568.2

RK 95/PE BKYE

Technical data

Dimensions

Length	84 mm
Width	25 mm
Height TS 35/7.5	88.5 mm
Height TS 32	94 mm

Ratings

Rated voltage	1000 V
Rated current	232 A
Rated cross-section	95 mm ²
Rated impulse voltage	8 kV
Overvoltage category	III
Contamination degree	3
Maximum power dissipation for nominal condition	7.42 W

Technical data

Connection data

Connection principle	Screw connection
Connection position	Lateral
Connections	2
Number of terminals per level	2
Number of levels	1
Wire cross-section single-core (rigid) / stranded, min.	25 mm ²
Wire cross-section single core (rigid)/stranded, max.	95 mm ²
Wire cross-section stranded, min.	25 mm ²
Wire cross-section stranded, max.	95 mm ²
Wire cross-section stranded with wire-end ferrules, min.	25 mm ²
Wire cross-section stranded with wire-end ferrules, max.	95 mm ²
Wire cross-section AWG, min.	2
Wire cross-section AWG, max.	4/0
Stripping length	30 mm
Screw head	Inner hex (Allen)
Screw threading	M 8
Tightening torque, min.	8 Nm
Tightening torque, max.	12 Nm

Materials

Insulation housing	Polyamide 6.6
Flammability class UL 94	V-2
Working temperature, min.	-40 °C
Working temperature, max.	105 °C

Further technical data

Mounting type	Mounting rail TS 35/7.5 and TS 32
Gauge plug acc. to EN 60 947-1	B12
Banded wire up to	16,6 x 6,0 mm

Print

Colour	Black-yellow
--------	--------------

Data sheet

1568.2

RK 95/PE BKYE



Technical data

Environmental Product Compliance

REACH Conform	yes
REACH Reference date	2021-07-08
REACH Candidate Substance Note	No
RoHS Conform	yes

1568.2

RK 95/PE BKYE

Approvals

CSA approval

CSA File Number	042110_0_000
CSA approval	C22.2 No 158
CSA approval granted	yes
CSA Usegroup C: rated voltage	600 V
CSA Usegroup C: rated current	230 A
CSA wire cross-section AWG, min.	2
CSA wire cross-section AWG, max.	4/0
CSA stripping length	30 mm

CSAus approval

CSAus File Number	042110_0_000
CSAus approval	UL 1059
CSAus approval granted	yes
CSAus Usegroup C: rated voltage	600 V
CSAus Usegroup C: rated current	230 A
CSAus wire cross-section AWG, min.	2
CSAus wire cross-section AWG, max.	4/0
CSAus stripping length	30 mm

Approvals

UL Recognized

UL File Number	E95701
UL approval	UL 1059
UL Usegroup B: rated voltage	600 V
UL Usegroup B: rated current	230 A
UL Usegroup C: rated voltage	600 V
UL Usegroup C: rated current	230 A
UL wire cross-section single-core (rigid) AWG, min.	2
UL wire cross-section single-core (rigid) AWG, max.	4/0
UL wire cross-section stranded AWG, min.	2
UL wire cross-section stranded AWG, max.	4/0
UL torque	89 Lb In
UL wire material	Cu
UL factory wiring	yes
UL Recognized	yes

Standards and regulations

EAC approval	TR ZU 004/2011
EAC approval granted	yes

German Lloyd approval

GL approval	IEC 60947-7-1:2002
GL approval granted	yes
GL rated voltage	600 V
GL rated current	230 A
GL rated cross-section	95 mm ²
GL environmental category	C

Approvals

KEMA KEUR approval

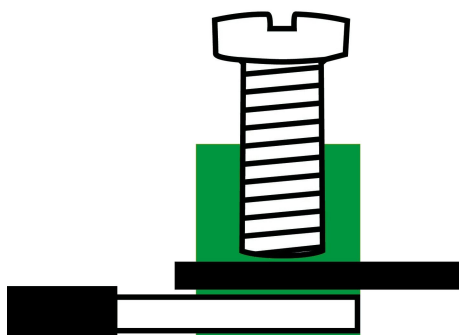
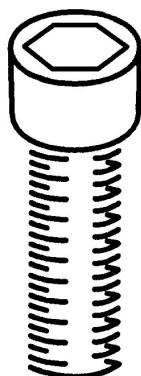
KEMA KEUR approval	EN 60947-7-1:2009
KEMA KEUR approval granted	yes
KEMA rated voltage	1000 V
KEMA rated current	232 A
KEMA rated impulse voltage	12 kV
KEMA wire cross-section single core (rigid), min.	25 mm ²
KEMA wire cross-section single-core (rigid), max.	95 mm ²
KEMA wire cross-section stranded, min.	25 mm ²
KEMA wire cross-section stranded, max.	95 mm ²
KEMA stripping length	30 mm
KEMA torque, min.	8 Nm
KEMA torque, max.	12 Nm

Media

EAC



M8





1568.2

RK 95/PE BKYE

Accessories

Cover



Cover, Length: 59 mm, Width: 15 mm,
Colour: Yellow

General order data

Product number:	Article name	GTIN (EAN)	Packaging unit
2804.0	AD 1/95/B YE	4044211055356	500 ST

Inlay profile

Inlay plate, Colour: natural



General order data

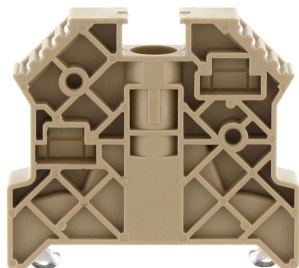
Product number:	Article name	GTIN (EAN)	Packaging unit
2274.0	EP 50	4044211050818	500 ST

1568.2

RK 95/PE BKYE

Accessories

End stop



End stop, Mounting type: Mounting rail TS 35/7.5, Width: 9.5 mm, Colour: Beige

General order data

Product number:	Article name	GTIN (EAN)	Packaging unit
2828.0	ES 35/K/ST BG	4044211055547	500 ST

Allen key socket wrench



Inner hex key with bare blade

General order data

Product number:	Article name	GTIN (EAN)	Packaging unit
2818.0	ISKS 5	4044211055448	500 ST

1568.2

RK 95/PE BKYE

Accessories

Insulated cross-connector



External insulated cross-connector, No. of poles: 2, Mounting type: Plug in, Width: 36.44 mm, Rated current: 150 A; Colour: Yellow

General order data

Product number:	Article name	GTIN (EAN)	Packaging unit
2763.2	AQI 2/50 YE	4044211054939	500 ST



External insulated cross-connector, No. of poles: 3, Mounting type: Plug in, Width: 57.04 mm, Rated current: 150 A; Colour: Yellow

General order data

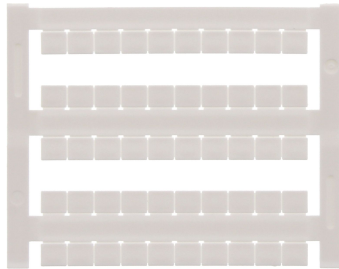
Product number:	Article name	GTIN (EAN)	Packaging unit
2764.2	AQI 3/50 YE	4044211054946	500 ST

1568.2

RK 95/PE BKYE

Accessories

Quick marking



Terminal marker / Pocket Maxicard, Length: 5 mm, Width: 6 mm, Colour: White

General order data

Product number:	Article name	GTIN (EAN)	Packaging unit
4702.7	PMC SB 6/50 WH	4044211089986	500 ST
