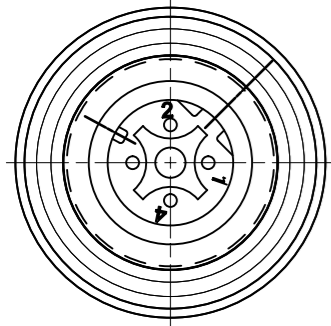


M12U 4 POLE MALE



VIEW FROM THE FRONT SIDE

PIN	WIRE COLOR
1	OG
2	BU
3	OG-WH
4	BU-WH

PART No. MATRIX

**E W W A 0 6 3 0 3 M X X X**

E=ETHERNET

HEADS:  
W=M12 4-Pole Ultra Lock  
D-Coding  
W=M12 4-Pole Ultra Lock  
D-Coding

HEADS STYLE:  
063=MALE RA / MALE RA

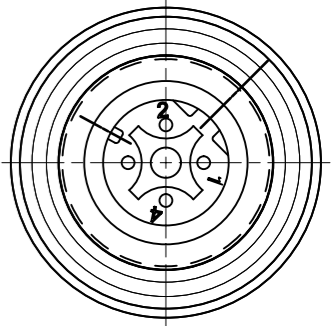
WIRING TYPE:  
A=4 Pole STRAIGHT WIRED

CABLE TYPE

UNITS:  
M = METER  
T=10x METER

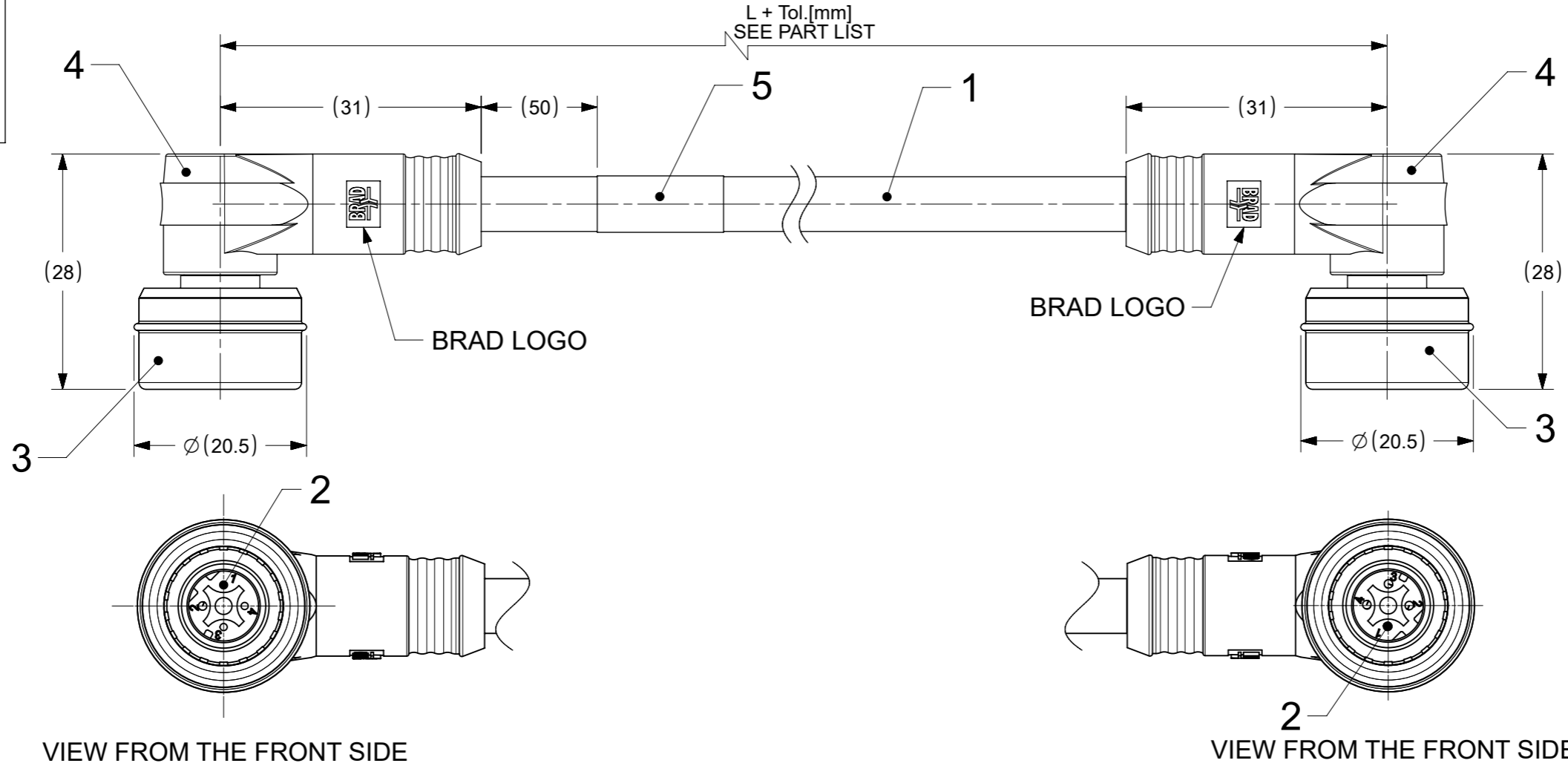
LENGTH EXAMPLES:  
005=0.5  
010=1  
150=15

M12U 4 POLE MALE



VIEW FROM THE FRONT SIDE

PIN	WIRE COLOR
1	OG
2	BU
3	OG-WH
4	BU-WH



PART LIST

MOLEX PN	ENGINEERING No	L+Tol. [mm]
1201080081	EWWA06303M006	600 +45
1201080082	EWWA06303M010	1000 +56
1201080083	EWWA06303M020	2000 +89

BOM

ITEM	QTY.	DESCRIPTION	MATERIAL	FINISH/COLOR
5	1	WRAP LABEL	VINYL	WHITE
4	-	MOULDING MATERIAL	TPU	BLACK
3	2	ULTRA M12 4P ASSEMBLY	-	-
2	8	CONTACT 10 MALE	BRASS	Au OVER Ni
1	-	ETHERNET CABLE-CAT5E	PVC	TEAL

DOCUMENT STATUS	P1	RELEASE DATE	2022/04/22	06:35:57
-----------------	----	--------------	------------	----------

NOTES :

ACC. TO CAT5e ETHERNET STD.  
MAX. VOLTAGE : 30V  
MAX. CURRENT : 1.5A  
IP RATING : IP67  
TEMPERATURE RANGE : -20°C TO +75°C

FUNCTIONAL SYMBOLS	THIS DRAWING CONTAINS INFORMATION THAT IS PROPRIETARY TO MOLEX ELECTRONIC TECHNOLOGIES, LLC AND SHOULD NOT BE USED WITHOUT WRITTEN PERMISSION	SCALE	CURRENT REV DESC:		
	mm	3:2			
DIVISIONAL SYMBOLS	GENERAL TOLERANCES (UNLESS SPECIFIED)				
	ANGULAR TOL	± 1.0°			
	4 PLACES	±			
	3 PLACES	±			
	2 PLACES	± 0.05			
EC NO: 703538		2022/03/29			
DRWN: SSM		2022/04/22			
CHK'D: RSILLER		2022/04/22			
APPR: RSILLER		2022/04/22			
INITIAL REVISION:					
DRWN: SSM		2022/03/29			
APPR: RSILLER		2022/04/22			
DRAFT WHERE APPLICABLE MUST REMAIN WITHIN DIMENSIONS		THIRD ANGLE PROJECTION	DRAWING	SERIES	MATERIAL NUMBER
			A3-SIZE	120108	SEE PART LIST
		CUSTOMER	SHEET NUMBER		
		GENERAL MARKET	1 OF 1		

**molex**

MIC 4P M/MP ULOCK 90/90 XM

PRODUCT CUSTOMER DRAWING

DOCUMENT NUMBER	DOC TYPE	DOC PART	REVISION
1201080082	PSD	000	A

6

5

4

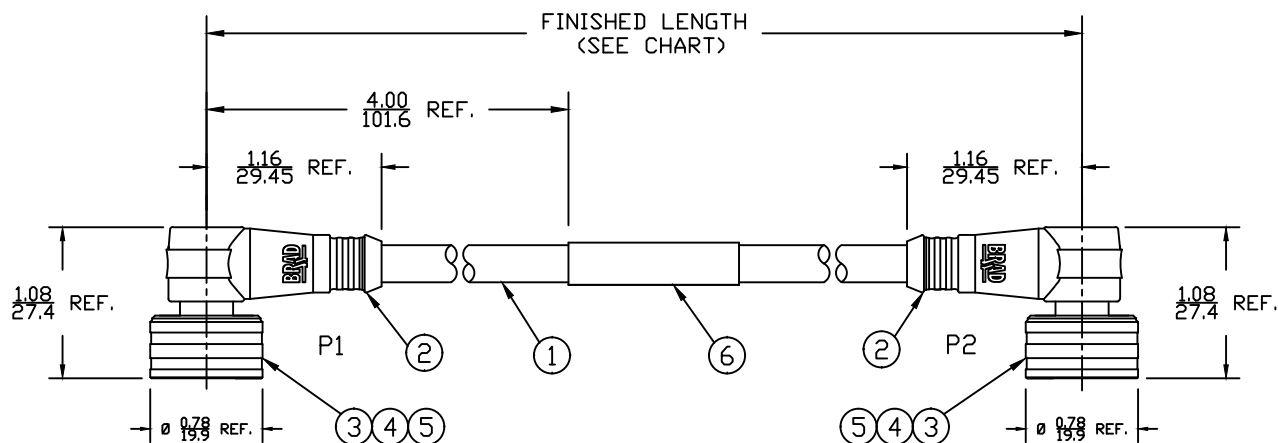
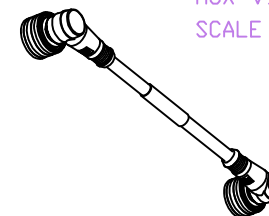
3

2

1

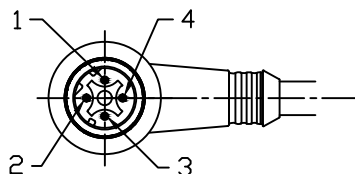
PART NUMBER	ENGINEERING NO.	LENGTH ± TOLERANCE
1201080082	EWWA06303M010	3' 3" +2.19"/-0" [ 1M +55.6/-0 mm ]
1201080084	EWWA06303M050	16' 4" +6.5"/-0" [ 5M +165.0/-0 mm ]
1201080085	EWWA06303M100	32' 10" +6.5"/-0" [ 10M +317.5/-0 mm ]

ⓑ

AUX VIEW  
SCALE 1:4

## NOTES:

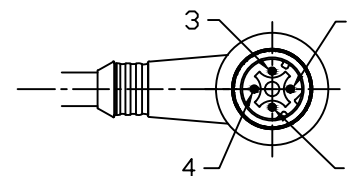
- 1) MATERIAL: SEE TABLE
- 2) FINISHES: SEE TABLE
- 3) CABLE: #24/4 UNSHIELDED PVC
- 4) ELECTRICAL DATA:  
ACCORDING TO CAT5e ETHERNET STANDARD  
MAX. VOLTAGE: 30V  
MAX. CURRENT: 1.5A
- 5) ENVIRONMENTAL:  
PROTECTION IP67  
TEMPERATURE RANGE: -20°C TO 75°C
- 6) WRAP LABEL IS MARKED WITH P/N, DATE CODE,  
VOLTAGE & AMPERAGE.
- 7) ASSEMBLY IS RoHS COMPLIANT.



MALE-FACE VIEW

P1		P2
1	ORANGE	1
2	BLUE	2
3	DRG/WHITE	3
4	BLUE/WHITE	4

WIRING DIAGRAM



MALE-FACE VIEW

6	1	LABEL	PLASTIC FILM	BLACK/YELLOW
5	2	INSERT	PUR	BLACK
4	8	PIN CONTACT	COPPER ALLOY	GOLD PLATED
3	2	M12 ULTRA-LOCK HEAD ASSY	BRASS	NICKEL
2	2	DVERMOLD	PUR	BLACK
1	1	ETHERNET CABLE-CAT5E	PVC JACKET	TEAL
ITEM	QTY.	DESCRIPTION	MATERIAL	FINISH

ADD PIN 1201080085	5/6/13
EC NO: IFC2013-1710	
DRWN: RSTONE	
CHKD: K JOZWIK	
APPR: BWOODMAN	
REV	DESCRIPTION
B	

QUALITY SYMBOLS  
 $\nabla=0$   
 $\nabla/C=0$

GENERAL TOLERANCES  
(UNLESS SPECIFIED)

	mm	INCH
4 PLACES	±---	±---
3 PLACES	±---	±.005
2 PLACES	±---	±.010
1 PLACE	±---	±.020

ANGULAR ±1/2°

DRAFT WHERE APPLICABLE  
MUST REMAIN  
WITHIN DIMENSIONS

DIMENSION STYLE  
IN/MM

DRAWN BY DATE  
VOU 2009/07/07

CHECKED BY DATE  
BWOODMAN 2009/07/31

APPROVED BY DATE  
---

SCALE  
3:4DESIGN UNITS  
INCHTHIRD ANGLE  
PROJECTION

TITLE  
M12 ULTRA-LOCK CABLE ASSY  
4P M/MP 90/90 D-CODE  
#24/4 UNSHIELDED PVC

molex MOLEX INCORPORATED

MATERIAL NO.  
SEE CHARTDOCUMENT NO.  
SD-120108-008SHEET NO.  
1 OF 1

SIZE A THIS DRAWING CONTAINS INFORMATION THAT IS PROPRIETARY TO MOLEX  
INCORPORATED AND SHOULD NOT BE USED WITHOUT WRITTEN PERMISSION

6

5

4

3

2

1