



**ANATECH ELECTRONICS INC**  
RF & Microwave Filters & Products

# 1565 MHz Ceramic Bandpass Filter

**Part Number: AM1565B1204**



## Electrical specifications

**Center Frequency:** 1565 MHz  
**Bandwidth:** 90 MHz  
**VSWR:** 2.0 : 1 min  
**Input / Output Impedance:** 50 Ohms  
**Passband:** 1520-1610 MHz  
**Passband Insertion Loss:** 1.0 dB max  
**Passband Ripple:** 0.5dB max  
**Rejection:** >25 dB @ 1265 MHz  
**Rejection 2:** >15 dB @ 1865 MHz  
**Power Handling:** 1 W

## Mechanical

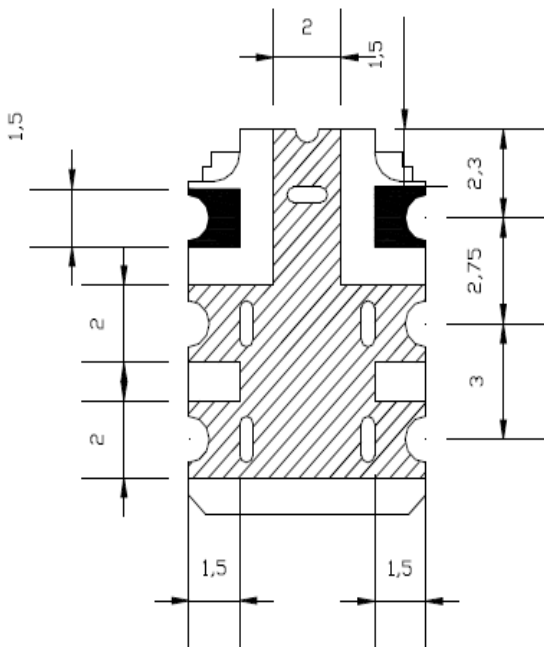
**Mounting Method:** SMT  
**Dimensions:** 10 x 7 x 3.6 mm

## Environmental

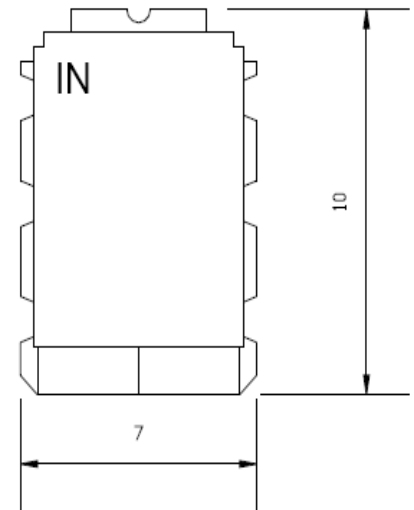
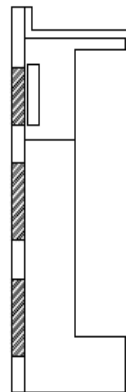
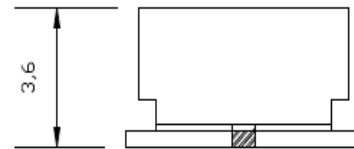
**Operating Temperature:** -30°C to +85°C  
**Storage Temperature:** -50°C to +90°C

**This product is RoHs compliant.**

## Outline Drawing:



GROUND  
 I.O PORT



TOLERANCES : +/- 0.3  
 UNIT : mm



# 1565 MHz Ceramic Bandpass Filter

## Part Number: AM1565B1204



**ANATECH ELECTRONICS INC**  
RF & Microwave Filters & Products

### Response Plot:

