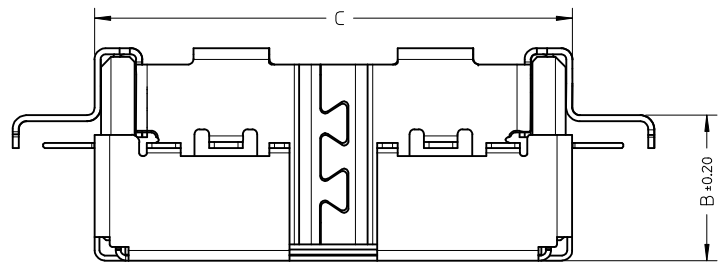
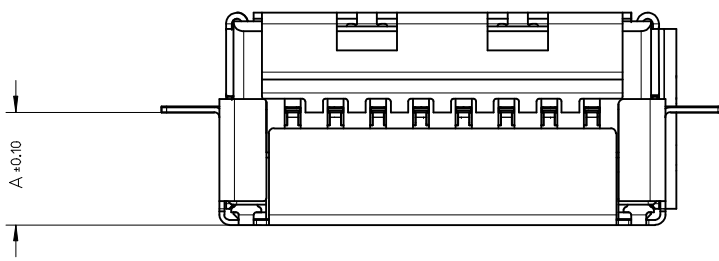


SECTION Z-Z

RECOMMEND PWB LAYOUT  
GENERAL TOLERANCE 0.05mm

RELEASED EC NO: SH2013-076 DRWN:WJHUO 2012/12/10 CHYD: APPR:AYIN 2013/01/08	QUALITY SYMBOLS DESCRIPTION	GENERAL TOLERANCES (UNLESS SPECIFIED)		DIMENSION STYLE MM ONLY		SCALE 5:1	DESIGN UNITS METRIC	THIRD ANGLE PROJECTION			
		4 PLACES ± --- ± ---	mm INCH	DRAWN BY WJHUO	DATE 2012/12/10	TITLE SMIA75++ CAMERA SOCKET THROUGH BOARD 16 PIN BOTTOM CONTACT					
		3 PLACES ± --- ± ---		CHECKED BY DATE		MATERIAL NO. SD-105168-001					
		2 PLACES ± 0.15 ± ---		APPROVED BY AYIN		DATE 2013/01/08		DOCUMENT NO. SD-105168-001			
1 PLACE ± 0.20 ± ---		DRAFT WHERE APPLICABLE MUST REMAIN WITHIN DIMENSIONS		SEE TABLE		SHEET NO. 1 OF 2					
0 PLACE ± --- ± ---		THIS DRAWING CONTAINS INFORMATION THAT IS PROPRIETARY TO MOLEX INCORPORATED AND SHOULD NOT BE USED WITHOUT WRITTEN PERMISSION									

10 9 8 7 6 5 4 3 2 1



1051680301	3.00	3.67	9.50
1051680601	2.90	3.57	9.50
1051680201	2.80	3.47	9.50
1051680501	2.70	3.37	9.50
1051680101	2.60	3.27	9.50
1051680091	2.40	3.07	9.50
1051680081	2.20	2.87	9.50
1051680071	2.00	2.69	9.90
1051680061	1.80	2.49	9.90
1051680051	1.60	2.29	9.90
1051680041	1.40	2.09	9.90
1051680031	1.20	1.89	9.90
1051680021	1.00	1.69	9.90
1051680011	0.80	1.49	9.90
1051680001	0.60	1.29	9.90
1051680401	0.50	1.29	9.90
PART NO.	DIM. A	DIM. B	DIM. C

NOTES:

- 1.MATERIA:
  - HOUSING: HIGH-TEMP THERMAL PLASTIC BLACK, UL94 V-0
  - TERMINAL: COPPER ALLOY, THICKNESS:0.10MM.
  - MAIN SHEL: COPPER ALLOY, THICKNESS:0.12MM
  - BOTTOM SHELL: COPPER ALLOY, THICKNESS:0.10MM
2. FINISH
  - TERMINAL: 2 MICROMETER MINIMUM NICKEL UNDERPLATING OVERALL, GOLD PLATING 0.3 MICROMETER MINIMUM ON CONTACT AREA, GOLD FLASH PLATING ON SOLDER AREA.
  - MAIN SHELL:2 MICROMETER MINIMUM NICKEL UNDERPLATING OVERALL, 0.8~2.8 MICROMETER BRIGHT TIN PLATING OVERALL.
  - BOTTOM SHELL :2 MICROMETER MINIMUM SOLDERABLE NICKEL UNDERPLATING OVERALL.
3. MECHANICAL CHARACTER:
  - 3.1. DURABILITY:30CYCLES
4. ELECTRICAL CHARACTER:
  - 4.1. RATED VOLTAGE: 10V DC MAX.
  - 4.2. RATED CURRENT: 0.5A MAX.
  - 4.3. LOW LEVEL CONTACT RESISTANT:60mOHM
5. PACKING:TAPE AND REEL,DETAIL SEE PK-105168-001.
6. COPLANARITY:0.08MM
7. PRODUCT SPECIFICATION: PS-105168-001
8. COMPLIANT TO RoHS DIRECTIVE 2002/95/EC AND ELV DIRECTIVE 2000/53/EC.

RELEASED EC NO: SH2013-0176 DRWN:WJHUO 2012/12/10 CHKD: APPR:AYIN 2013/01/08 REV	QUALITY SYMBOLS	GENERAL TOLERANCES (UNLESS SPECIFIED)	DIMENSION STYLE MM ONLY	SCALE 10:1	DESIGN UNITS METRIC	THIRD ANGLE PROJECTION												
		<table border="1"> <tr><th>mm</th><th>INCH</th></tr> <tr><td>4 PLACES ± ---</td><td>± ---</td></tr> <tr><td>3 PLACES ± ---</td><td>± ---</td></tr> <tr><td>2 PLACES ± 0.15</td><td>± ---</td></tr> <tr><td>1 PLACE ± 0.20</td><td>± ---</td></tr> <tr><td>0 PLACE ± ---</td><td>± ---</td></tr> </table>	mm	INCH	4 PLACES ± ---	± ---	3 PLACES ± ---	± ---	2 PLACES ± 0.15	± ---	1 PLACE ± 0.20	± ---	0 PLACE ± ---	± ---	DRAWN BY: WJHUO DATE: 2012/12/10 CHECKED BY: DATE: APPROVED BY: DATE: 2013/01/08	TITLE SMIA75++ CAMERA SOCKET THROUGH BOARD 16 PIN BOTTOM CONTACT <b>molex</b>		
	mm	INCH																
	4 PLACES ± ---	± ---																
3 PLACES ± ---	± ---																	
2 PLACES ± 0.15	± ---																	
1 PLACE ± 0.20	± ---																	
0 PLACE ± ---	± ---																	
	ANGULAR ± 3 °	MATERIAL NO.	DOCUMENT NO.		SHEET NO.													
	DRAFT WHERE APPLICABLE MUST REMAIN WITHIN DIMENSIONS	SEE TABLE	SD-105168-001		2 OF 2													
			THIS DRAWING CONTAINS INFORMATION THAT IS PROPRIETARY TO MOLEX INCORPORATED AND SHOULD NOT BE USED WITHOUT WRITTEN PERMISSION															

9 8 7 6 5 4 3 2 1