

WIRE COMBINATIONS FOR NYLON-INSUALTED CLOSED END CONNECTORS

(D1)
 MOLEX P/N: 191600012 (NC-2214), 191600130 (NC-2214BULK)
 191600070 (NC-2214T), 191600091 (NC-2214BT)
 (D1) (D1)

WIRE PREPARATION

NOTE: PRE-TWISTING NOT REQD FOR OEM APPLICATIONS
 SOLID: (OEM ONLY)
 A. STRIP LEADS TO .38(9.5)
 B. INSERT INTO CONNECTOR & CRIMP
 STRANDED:
 A. STRIP LEADS TO APROX. .75(19.1)
 B. TWIST WIRE COMBINATION EVENLY & TIGHT.
 C. TRIM STRIPPED PRE-TWISTED ZONE TO .38(9.5).
 D. INSERT INTO CONNECTOR AND CRIMP.

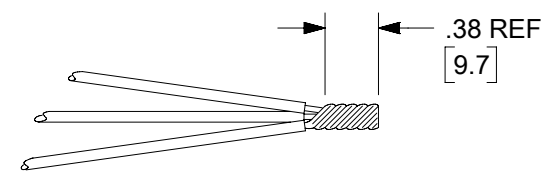
UL LISTED WIRE COMBINATIONS

STRANDED WIRE ONLY

16 AWG	18 AWG	20 AWG	22 AWG
			7
		1	6
	1		5
		2	4
	1		4
		2	3
1			3
		3	2
1			2
		4	1
	2		1
1			1
		4	
	1	3	
1		2	
	2	1	
1		1	
	3		

STRANDED WIRE ONLY

16 AWG	18 AWG	20 AWG	22 AWG
	2		
1	1		
1	1	1	
	1	2	
	2		2
	1		3
	1		1
	1	1	1
	1	2	1
	1	1	2
	1	1	3
		3	1
		2	2
		1	4
		1	5
			6
1	1	1	1



RATING 105°C 300 VOLT
 FILE: E32244
 RATING 125°C 300 VOLT
 FILE: LR 18689

APPLICATION WITH HANDTOOL:

HOLD TOOL WITH LOCATOR PLATE FACING UP.
 INSERT CLOSED END CONNECTOR IN HOLE.
 INSURE THAT SHOULDER OF CONNECTOR IS RESTING ON LOCATOR PLATE.
 CLOSE TOOL JAWS UNTIL CONNECTOR IS HELD SNUG IN PLACE.
 LOAD CONNECTOR WITH DESIRED WIRE COMBINATION.
 COMPLETE CRIMP BY CLOSING TOOL HANDLES UNTIL THEY RELEASE.

CRIMP TOOLING AVAILABLE

640010600 (RHT-7000) HANDTOOL
 640053400 (AT-2214) CRIMP HEAD OR 640050600 (AT-7000) CRIMP HEAD
 FOR 192790001 (AT-200) AIR HAND TOOL
 (D1)
 192280030 (ATP-301) AIR TAPE PRESS OR
 638853500 MINI-MAC TAPE APPLICATOR WITH
 192880242 (ATP-NC-2214) CRIMPING DIES

ADDITIONAL UL LISTED WIRE COMBINATIONS

- (3) 18 AWG SOLID
- (2) 18 AWG SOLID

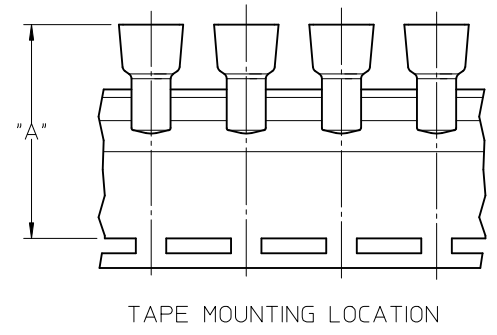
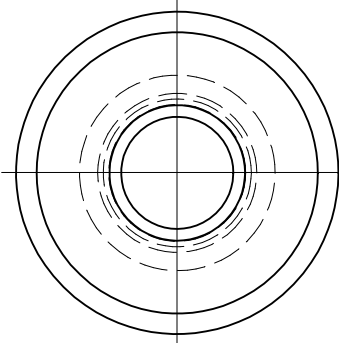
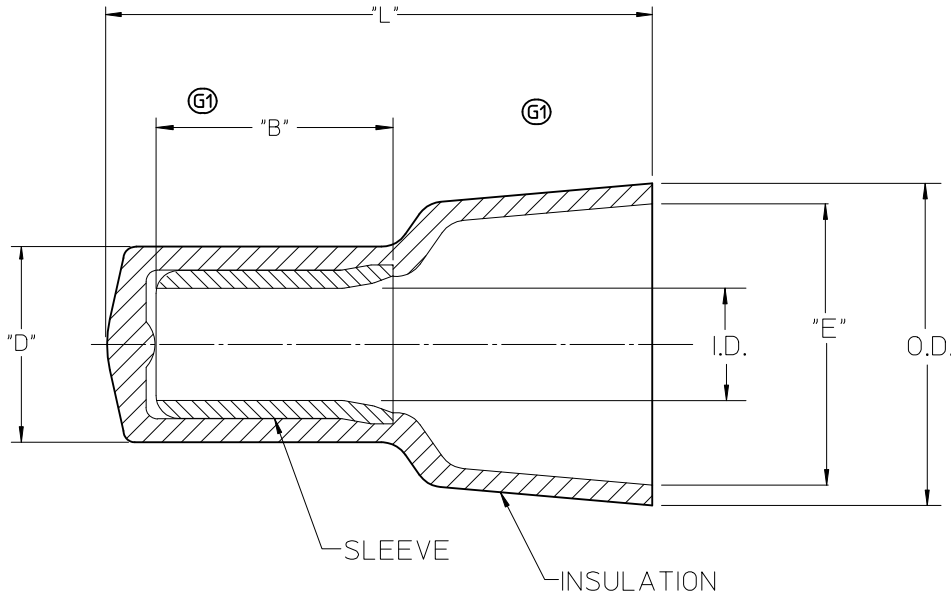
CSA CERTIFIED WIRE COMBINATIONS

- (7) 22 AWG STRANDED
- (4) 22 AWG STRANDED WITH (2) 20 AWG STRANDED
- (2) 20 AWG STRANDED WITH (1) 16 AWG STRANDED
- (2) 18 AWG STRANDED WITH (1) 20 AWG STRANDED
- (3) 18 AWG STRANDED
- (2) 18 AWG SOLID

NOTE: THIS DOCUMENT USED TO MAKE STUFFER SHEET
 PART NO: 194080109
 DOC NO'S: E-19160-009 & PK-19408-109

FUNCTIONAL SYMBOLS FA=0 FE=0 FD=0	THIS DRAWING CONTAINS INFORMATION THAT IS PROPRIETARY TO MOLEX ELECTRONIC TECHNOLOGIES, LLC AND SHOULD NOT BE USED WITHOUT WRITTEN PERMISSION										
	DIMENSION UNITS INCH/MM		SCALE NTS		CURRENT REV DESC: P/N TYPO/ ERROR: 191600070 WAS 191600071, 191600130 WAS 190600129, 191600091 WAS 191600190. CRIMP TOOLING P/N'S UPDATED.				molex		
	GENERAL TOLERANCES (UNLESS SPECIFIED)						EC NO: 704038				
	4 PLACES ±		MM		INCH		DRWN: DMYRICK 2022/04/07		CLOSED END CONNECTOR WIRE COMBINATNS NC-2214 PRODUCT SPECIFICATION		
3 PLACES ±						CHKD: JMACNEIL 2022/05/04					
2 PLACES ±						APPR: JMACNEIL 2022/05/04		PRODUCT CUSTOMER DRAWING			
1 PLACE ±						INITIAL REVISION:					
0 PLACES ±						DRWN: JHACKNEY 1999/11/03		DOCUMENT NUMBER			
ANGULAR TOL ± °						APPR: JMACNEIL 2012/06/06		PS-19160-007			
DRAFT WHERE APPLICABLE MUST REMAIN WITHIN DIMENSIONS				THIRD ANGLE PROJECTION		DRAWING		SERIES		MATERIAL NUMBER	
						B-SIZE		19160		SEE CHART	
								CUSTOMER		SHEET NUMBER	
								GENERAL MARKET		1 OF 1	

LOOSE PIECE		TAPE MOUNTED		"L" MAX.	"B" MIN (G1)	"D" MAX.	"E" MIN.	I.D. MIN.	O.D. MAX.	"A" DIM ±.02/0.5 (G1)
MATERIAL NO.	ENG. NO.	MATERIAL NO.	ENG. NO.							
191600012	NC-2214	191600070	NC-2214T	.62/15.7	.30/7.6	.19/4.8	.24/6.1	.09/2.3	.32/8.1	1.54/39.2
191600009	NC-2212	191600071	NC-2212T	.76/19.3	.30/7.6	.23/5.8	.27/6.9	.10/2.5	.36/9.1	1.63/41.4
191600002	NC-1610	191600083	NC-1610T	.90/22.8	.28/7.1	.28/7.1	.38/9.6	.15/3.8	.45/11.4	1.75/44.5
191600024	NC-8	191600028	NC-8T	1.10/27.9	.42/10.6	.36/9.1	.48/12.2	.21/5.3	.57/14.5	1.86/47.4



NOTES:

- MATERIAL: SLEEVE: TIN-PLATED COPPER
INSULATION: 6/6 NYLON,
NATURAL TRANSLUCENT
- PARTS ARE ROHS COMPLIANT.

SALES DRAWING

CORRECT TOLERANCES EC NO: WNA2010-0673 DRAWN BY: DRWINETHRODAHL 2010/05/07 CHKDR: DEROSS 04/02/23 APPR: JMAGNEIL 2010/06/23	QUALITY SYMBOLS ▽=0 ▽=0	GENERAL TOLERANCES (UNLESS SPECIFIED)		DIMENSION STYLE		SCALE	DESIGN UNITS	THIRD ANGLE PROJECTION			
				IN/MM		5:1	INCH				
				DRAWN BY DATE		TITLED		CLOSED END CONNECTORS NYLON INSULATED MOLEX INCORPORATED			
				CHECKED BY DATE		APPROVED BY DATE					
		MATERIAL NO.		DOCUMENT NO.		SHEET NO.					
		SEE CHART		SD-19160-001		1 OF 1					
		DRAFT WHERE APPLICABLE MUST REMAIN WITHIN DIMENSIONS								THIS DRAWING CONTAINS INFORMATION THAT IS PROPRIETARY TO MOLEX INCORPORATED AND SHOULD NOT BE USED WITHOUT WRITTEN PERMISSION	