

# PS-12G Series Pushbutton Switches



A  
Pushbutton

## Features/Benefits

- Latching pushbutton
- Non-shorting with lock
- 5 mm travel
- SPDT

## Typical Applications

- Automotive interior lighting
- Computer peripherals
- Appliances



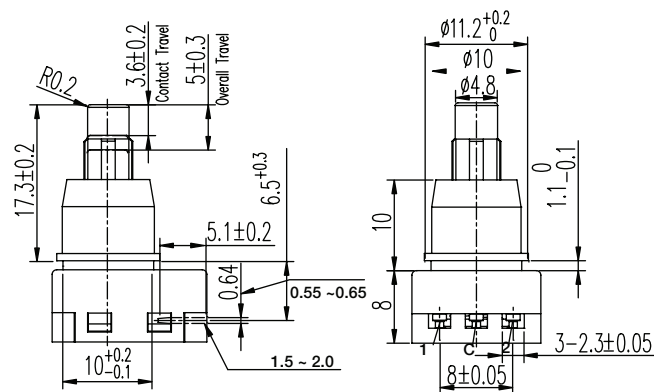
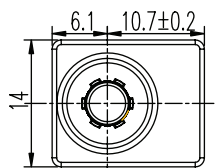
## How To Order

Part number list is shown below. For individual part details, please refer to the following pages.

Part Number (Part Description)	Product Details
PS-12G01	SPDT, non-shorting with lock, 1A @ 14 VDC, white actuator
PS-12G03	SPDT, non-shorting with lock, 2.2A @ 14.5 VDC, black actuator



PART NUMBER	PACKAGING	SCHEMATIC
<b>PS-12G01</b>	200 pieces	



## Dimensions

WIDTH X DEPTH: 14 x 16.8 mm

HEIGHT: 18 mm

## Specifications

CONTACT RATING: 1A @ 14 VDC

INITIAL CONTACT RESISTANCE: 100 m ohms max.

INSULATION RESISTANCE: 100 M ohms min.

DIELECTRIC STRENGTH: 500 V AC (50-60 Hz) between open terminals and between the frame and terminal.

OPERATING LIFE: 20,000 cycles with load

OPERATING FORCE: 400 ± 100 gf

OPERATING POSITION: 3.6 ± 0.2 mm

TOTAL TRAVEL: 5 ± 0.3 mm

OPERATING TEMPERATURE: -20°C to 70°C

## Materials

KNOB: POM (UL 94HB)

HOUSING: PBT (UL 94V-0)

COVER: PBT (UL 94V-0)

ROTOR: PBT (UL 94V-0)

SLIDER: POM (UL 94HB)

TERMINAL: Phosphor bronze, silver plated

SPRING: Stainless steel

CONTACT: Phosphor bronze, silver plated



# PS-12G Series Pushbutton Switches

Pushbutton  
A



PART NUMBER	PACKAGING	SCHEMATIC
<b>PS-12G03</b>	200 pieces	

## Dimensions

WIDTH X DEPTH: 14 x 16.8 mm

HEIGHT: 18.3 mm

## Specifications

CONTACT RATING: 2.2A @ 14.5 VDC

INITIAL CONTACT RESISTANCE: 50 m ohms max.

INSULATION RESISTANCE: 100 M ohms min.

DIELECTRIC STRENGTH: 500 V AC (50-60 Hz) between open terminals and between the frame and terminal.

OPERATING LIFE: 20,000 cycles with load

OPERATING FORCE: 650 ± 300 gf

OPERATING POSITION: 4.00 ± 0.2 mm

TOTAL TRAVEL: 4.5 ± 0.3 mm

OPERATING TEMPERATURE: -40°C to 85°C

## Materials

KNOB: POM (UL 94HB)

HOUSING: PBT & PA (UL 94V-0)

COVER: PBT (UL 94V-0)

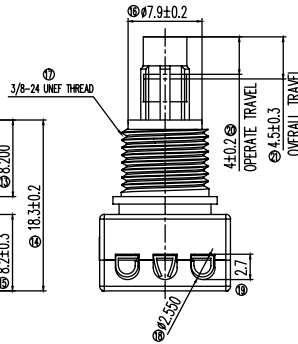
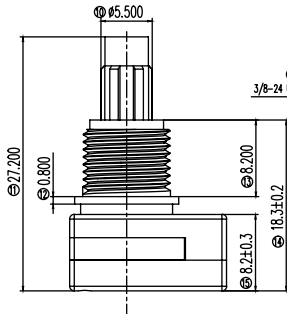
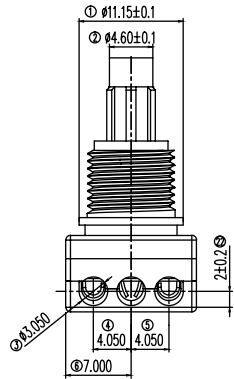
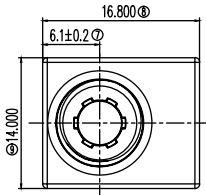
ROTOR: PBT (UL 94V-0)

SLIDER: POM (UL 94HB)

TERMINAL: Brass, silver plated

SPRING: Stainless steel

CONTACT: Phosphor bronze, silver plated



TYCO .062 Commercial Pin  
and Socket Connector  
PT# 770983-1

# PS-22 Series Subminiature Pushbutton Switches



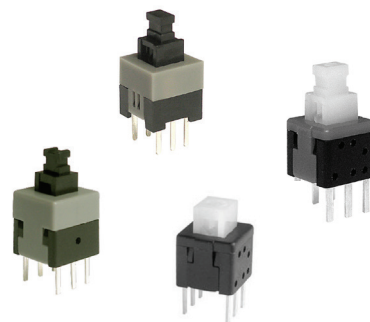
A  
Pushbutton

## Features/Benefits

- Compact miniature push switch
- Momentary or latching options
- Shorting or non-shorting
- DPDT

## Typical Applications

- Industrial
- Automotive
- Audio and visual equipment



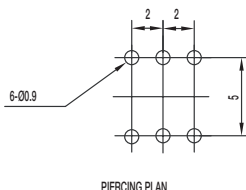
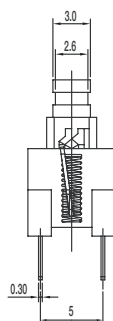
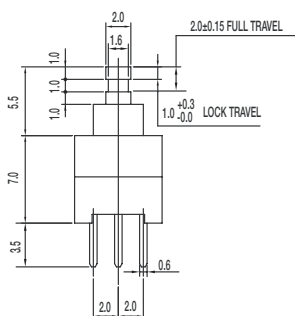
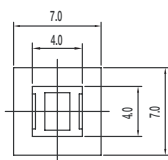
## How To Order

Part number list is shown below. For individual part details, please refer to the following pages.

Part Number (Part Description)	Product Details	Part Number (Part Description)	Product Details
PS-2203-L NS PA	DPDT, non-shorting, lock, dim: 7.0*7.0*12.5 mm	PS-2214-L NS PA	DPDT, non-shorting, lock, dim: 5.8*5.8*7.5 mm
PS-2203-F NS PA	DPDT, non-shorting, mom, dim: 7.0*7.0*12.5 mm	PS-2214-F NS PA	DPDT, non-shorting, mom, dim: 5.8*5.8*7.5 mm
PS-2206-F NS	DPDT, non-shorting, mom, dim: 8.0*8.0*12.5 mm	PS-221605-L NS	DPDT, non-shorting, lock, dim: 5.8*5.8*10.0 mm



PART NUMBER	PACKAGING	SCHEMATIC
<b>PS-2203-L NS PA</b>	1,000 pieces	
<b>PS-2203-F NS PA</b>	1,000 pieces	



## Dimensions

WIDTH X DEPTH: 7.0 x 7.0 mm

HEIGHT: 12.5 mm

## Specifications

CONTACT RATING: 0.1A @ 30 VDC

INITIAL CONTACT RESISTANCE: 30 m ohms max.

INSULATION RESISTANCE: 100 M ohms min.

DIELECTRIC STRENGTH: 500 V AC (50-60 Hz) between open terminals and between the frame and terminal.

OPERATING LIFE: 10,000 cycles with load

OPERATING FORCE:

200 ± 100 gf (1.96 ± 0.98N)

LOCK TRAVEL: 1 mm

TOTAL TRAVEL: 2 mm

OPERATING TEMPERATURE: -20°C to 70°C

## Materials

KNOB: POM Black

HOUSING: PA Black

COVER: POM Grey (latch) / White (Mom)

TERMINAL: Brass, silver plated

CONTACT CLIP: Phosphor bronze., silver plated

SPRING: Stainless steel

HOOK LOCK: Stainless steel (latch)



# PS-22 Series Subminiature Pushbutton Switches

Pushbutton  
A



PART NUMBER	PACKAGING	SCHEMATIC
<b>PS-2206-F NS</b>	1,000 pieces	

## Dimensions

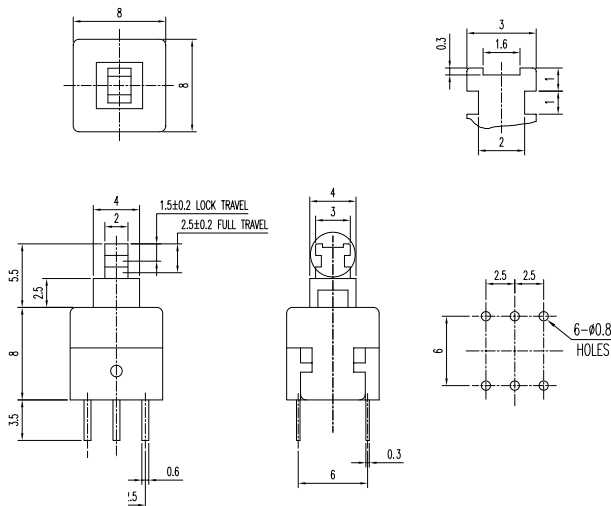
WIDTH X DEPTH: 8.0 x 8.0 mm  
HEIGHT: 13.5 mm

## Specifications

CONTACT RATING: 0.1A @ 30 VDC  
INITIAL CONTACT RESISTANCE: 70 m ohms max.  
INSULATION RESISTANCE: 100 M ohms min.  
DIELECTRIC STRENGTH: 500 V AC (50-60 Hz) between open terminals and between the frame and terminal.  
OPERATING LIFE: 10,000 cycles with load  
OPERATING FORCE:  
200 ± 100 gf (1.96 ± 0.98N)  
LOCK TRAVEL: 1.5 mm  
TOTAL TRAVEL: 2.5 mm  
OPERATING TEMPERATURE: -20°C to 70°C

## Materials

KNOB: POM Black  
HOUSING: PBT Black  
COVER: POM Grey (latch) / White (Mom)  
TERMINAL: Brass, silver plated  
CONTACT CLIP: Phosphor bronze., silver plated  
SPRING: Stainless steel  
HOOK LOCK: Stainless steel (latch)



PART NUMBER	PACKAGING	SCHEMATIC
<b>PS-2214-L NS PA</b>	1,000 pieces	
<b>PS-2214-F NS PA</b>	1,000 pieces	

## Dimensions

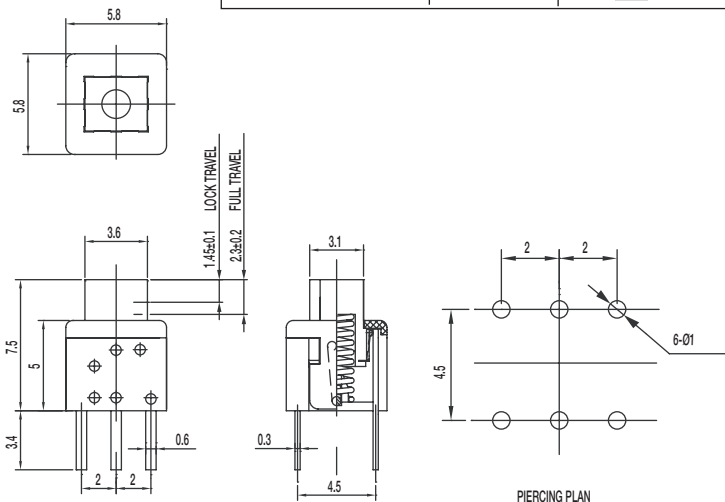
WIDTH X DEPTH: 5.8 x 5.8 mm  
HEIGHT: 7.5 mm

## Specifications

CONTACT RATING: 0.1A @ 30 VDC  
INITIAL CONTACT RESISTANCE: 80 m ohms max.  
INSULATION RESISTANCE: 100 M ohms min.  
DIELECTRIC STRENGTH: 500 V AC (50-60 Hz) between open terminals and between the frame and terminal.  
OPERATING LIFE: 10,000 cycles with load  
OPERATING FORCE:  
150 ± 50 gf (1.47 ± 0.49N)  
LOCK TRAVEL: 1.45 mm  
TOTAL TRAVEL: 2.3 mm  
OPERATING TEMPERATURE: -20°C to 70°C

## Materials

KNOB: POM Natural (latch) / PA black  
HOUSING: PA Black  
COVER: PA Black  
TERMINAL: Brass, silver plated  
CONTACT CLIP: Phosphor bronze, silver clad  
SPRING: Stainless steel  
HOOK LOCK: Stainless steel (latch)



# PS-22 Series Subminiature Pushbutton Switches



A  
Pushbutton



PART NUMBER	PACKAGING	SCHEMATIC
<b>PS-221605-L NS</b>	1,000 pieces	

## Dimensions

WIDTH X DEPTH: 5.8 x 5.8 mm

HEIGHT: 10 mm

## Specifications

CONTACT RATING: 0.1A @ 30 VDC / 2A @ 2 VDC

INITIAL CONTACT RESISTANCE: 80 m ohms max.

INSULATION RESISTANCE: 100 M ohms min.

DIELECTRIC STRENGTH: 500 V AC (50-60 Hz) between open terminals and between the frame and terminal.

OPERATING LIFE: 10,000 cycles with load

OPERATING FORCE:

150 ± 50 gf (1.47 ± 0.49N)

LOCK TRAVEL: 1.3 mm

TOTAL TRAVEL: 2.1 mm

OPERATING TEMPERATURE: -20°C to 70°C

## Materials

KNOB: POM Natural

HOUSING: PA Black

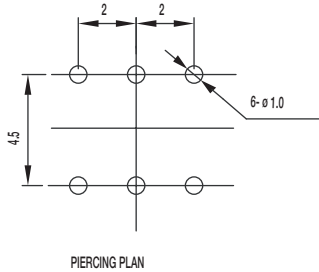
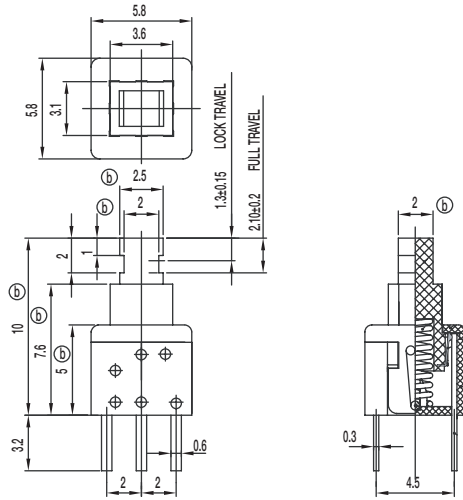
COVER: PC Grey

TERMINAL: Bras, silver plated

CONTACT CLIP: Phosphor bronze, silver clad

SPRING: Stainless steel

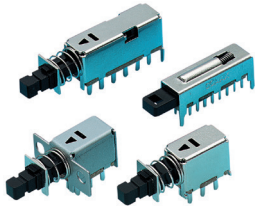
HOOK LOCK: Stainless steel (latch)





# PS Series Miniature Pushbutton Switches

Pushbutton  
A



## Features/Benefits

- Miniature size
- Momentary or latching options
- Broad range of products

## Typical Applications

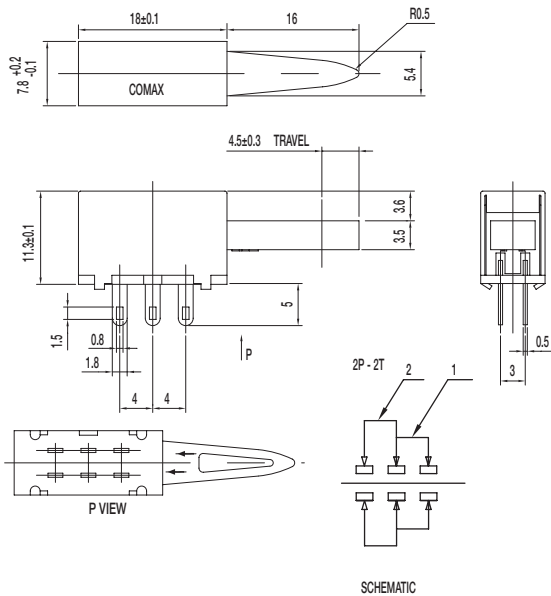
- Industrial
- Automotive
- Audio and visual equipment
- Telecommunications

## How To Order

Part number list is shown below. For individual part details, please refer to the following.

Part Number (Part Description)	Product Details
PS-22105	DPDT, non-shorting, RT angle with metal frame

## PS-22105 DPDT NON-SHORTING



## Specifications

- CONTACT RATING: 0.3A @ 30 VDC  
 INITIAL CONTACT RESISTANCE: 30 m ohms max.  
 INSULATION RESISTANCE: 100 M ohms min.  
 DIELECTRIC STRENGTH: 500 V AC (50-60 Hz) between open terminals and between the frame and terminal.  
 OPERATING LIFE: 10,000 cycles with load  
 OPERATING FORCE: 400 ± 150 gf (3.92 ± 1.47N)  
 TOTAL TRAVEL: 4.5 ± 0.3 mm  
 OPERATING TEMPERATURE: -20°C to 70°C

## Materials

- FRAME: SECC  
 KNOB: POM (UL 94HB)  
 CONTACT PLATE: Silver clad  
 SPRING: SUS  
 TERMINAL: Silver plated

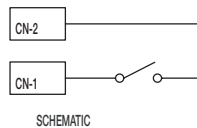
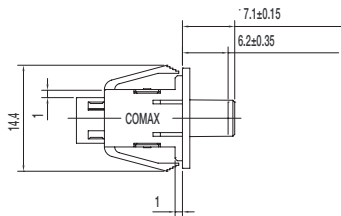
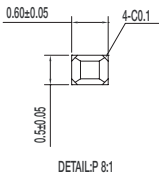
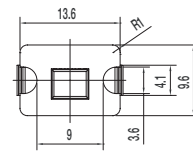
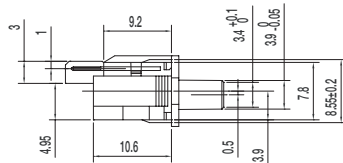
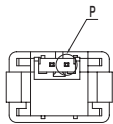
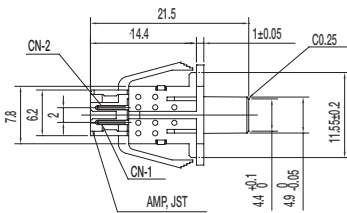


### How To Order

Part number list is shown below. For individual part details, please refer to the following pages.

Part Number (Part Description)	Product Details
PS-12C02-F NS	SPST non-shorting, mom
PS-32C02-F NS	1P3T non-shorting, mom, pitch: 7.2 mm
PS-42C02-F NS	1P4T non-shorting, mom, pitch: 7.2 mm

### PS-12C02-F NS SPST NON-SHORTING



### Specifications

- CONTACT RATING: 100  $\mu$  A @ 3 VDC min. / 10mA @ 5 VDC max
- INITIAL CONTACT RESISTANCE: 100 m ohms max.
- INSULATION RESISTANCE: 100 M ohms min.
- DIELECTRIC STRENGTH: 250 V AC (50-60 Hz) between open terminals and between the frame and terminal.
- OPERATING LIFE: 100,000 cycles with load
- OPERATING FORCE: 50  $\pm$  15 gf (0.49  $\pm$  0.147N)
- PRE-TRAVEL: 6.20  $\pm$  0.35 mm
- OPERATING TEMPERATURE: -40°C to 85°C

### Materials

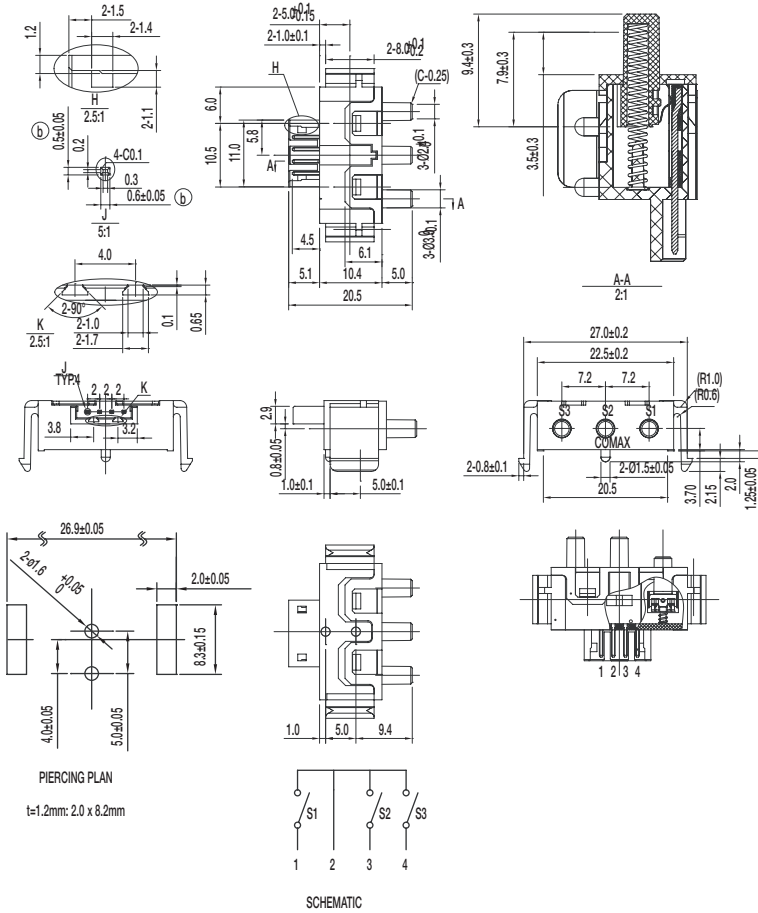
- KNOB: POM (UL 94HB)
- COVER: PA (UL 94V-0)
- HOUSING: PA (UL 94V-0)
- SPRING: SUS
- TERMINAL: Silver plated



# PS Series Miniature Pushbutton Switches

Pushbutton

## PS-32C02-F NS 1P3T NON-SHORTING



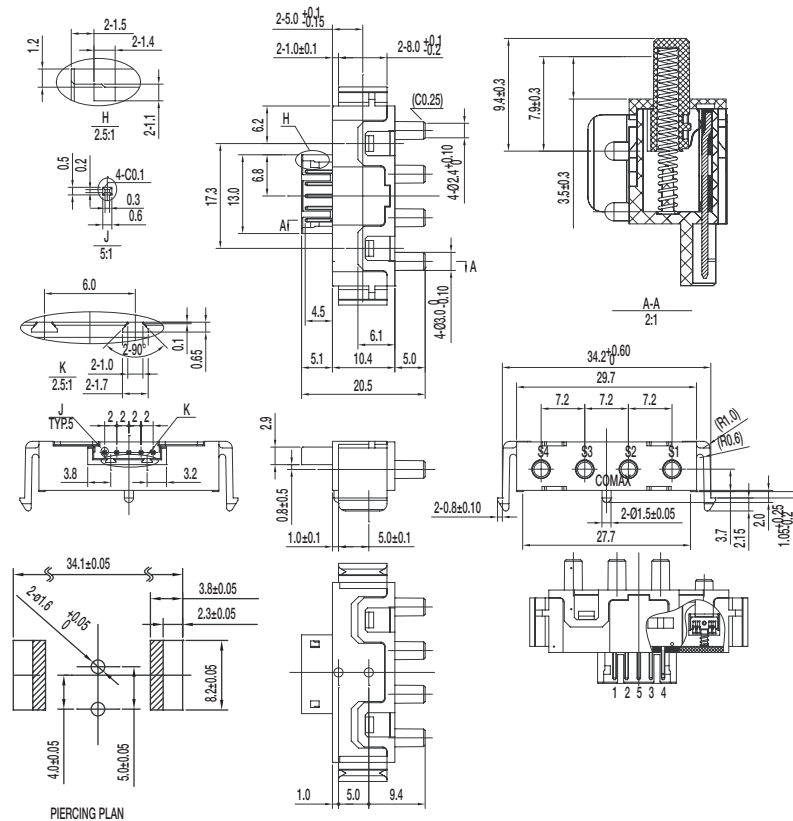
### Specifications

- CONTACT RATING: 100  $\mu$  A @ 3 VDC min. / 10mA @ 5 VDC max
- INITIAL CONTACT RESISTANCE: 100 m ohms max.
- INSULATION RESISTANCE: 100 M ohms min.
- DIELECTRIC STRENGTH: 250 V AC (50-60 Hz) between open terminals and between the frame and terminal.
- OPERATING LIFE: 100,000 cycles with load
- OPERATING FORCE: 80  $\pm$  20 gf (0.784  $\pm$  0.196N)
- PRE-TRAVEL: 1.5  $\pm$  0.3 mm
- OVER-TRAVEL: 3.5  $\pm$  0.3 mm
- TOTAL TRAVEL: 5  $\pm$  0.3 mm
- OPERATING TEMPERATURE: -20°C to 65°C

### Materials

- KNOB: POM (UL 94HB)
- COVER: PA (UL 94V-0)
- HOUSING: PA (UL 94V-0)
- SPRING: SUS
- TERMINAL: Silver plated

## PS-42C02-F NS 1P4T NON-SHORTING



### Specifications

- CONTACT RATING: 100  $\mu$  A @ 3 VDC min. / 10mA @ 5 VDC max
- INITIAL CONTACT RESISTANCE: 100 m ohms max.
- INSULATION RESISTANCE: 100 M ohms min.
- DIELECTRIC STRENGTH: 250 V AC (50-60 Hz) between open terminals and between the frame and terminal.
- OPERATING LIFE: 100,000 cycles with load
- OPERATING FORCE: 80  $\pm$  20 gf (0.784  $\pm$  0.196N)
- PRE-TRAVEL: 1.5  $\pm$  0.3 mm
- OVER-TRAVEL: 3.5  $\pm$  0.3 mm
- TOTAL TRAVEL: 5  $\pm$  0.3 mm
- OPERATING TEMPERATURE: -20°C to 65°C

### Materials

- KNOB: POM (UL 94HB)
- COVER: PA (UL 94V-0)
- HOUSING: PA (UL 94V-0)
- SPRING: SUS
- TERMINAL: Silver plated

Dimensions are shown: mm  
Specifications and dimensions subject to change