

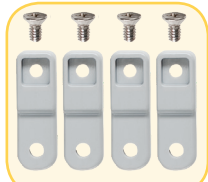


## PREMIUM POLYCARBONATE ENCLOSURE

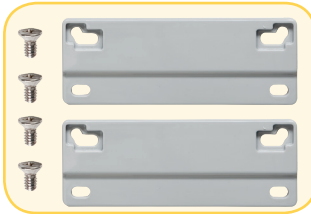
### Features and Benefits

- Standard color – light gray with a gloss finish.
- Best material – bases, opaque covers and clear covers are all made of high-impact, UV resistant polycarbonate.
- Easy ordering – one part number includes base, lid, mounting feet or flanges and all lid fastening hardware (mounting panels sold separately).
- Flexible interior mounting – features the unique and patented Integra adjustable depth “T-Rail” back panel mounting system (back panel and adjustable brackets sold separately).
- Features multiple bosses for easy installation of devices and DIN rails.
- UL-50 / c-UL Listed (files # E229365, # E207562)

Our Premium Line enclosures are the most durable, non-metallic NEMA UL rated enclosures available. From the extremely versatile mounting options inside the enclosure to having the most off-the-shelf accessories, the Integra “Made In the USA” Premium Line enclosures provide great value to any application.



Comes with feet or flanges.



| Mechanical and Thermal           | Test Spec. | Unit   | Premium Line |
|----------------------------------|------------|--------|--------------|
| Instrumented Dart Impact @ 73° F |            | in/lb. | 565          |
| Falling Ball Impact @ 73° F      | UL-746     | in/lb. | 900          |
| Deflection Temperature @ 264 psi | ASTM D648  | Deg. F | 270          |
| Modulus of Elasticity            | ASTM D790  | ksi    | 340          |
| Temperature Range                |            | Deg. F | -40 to 265   |

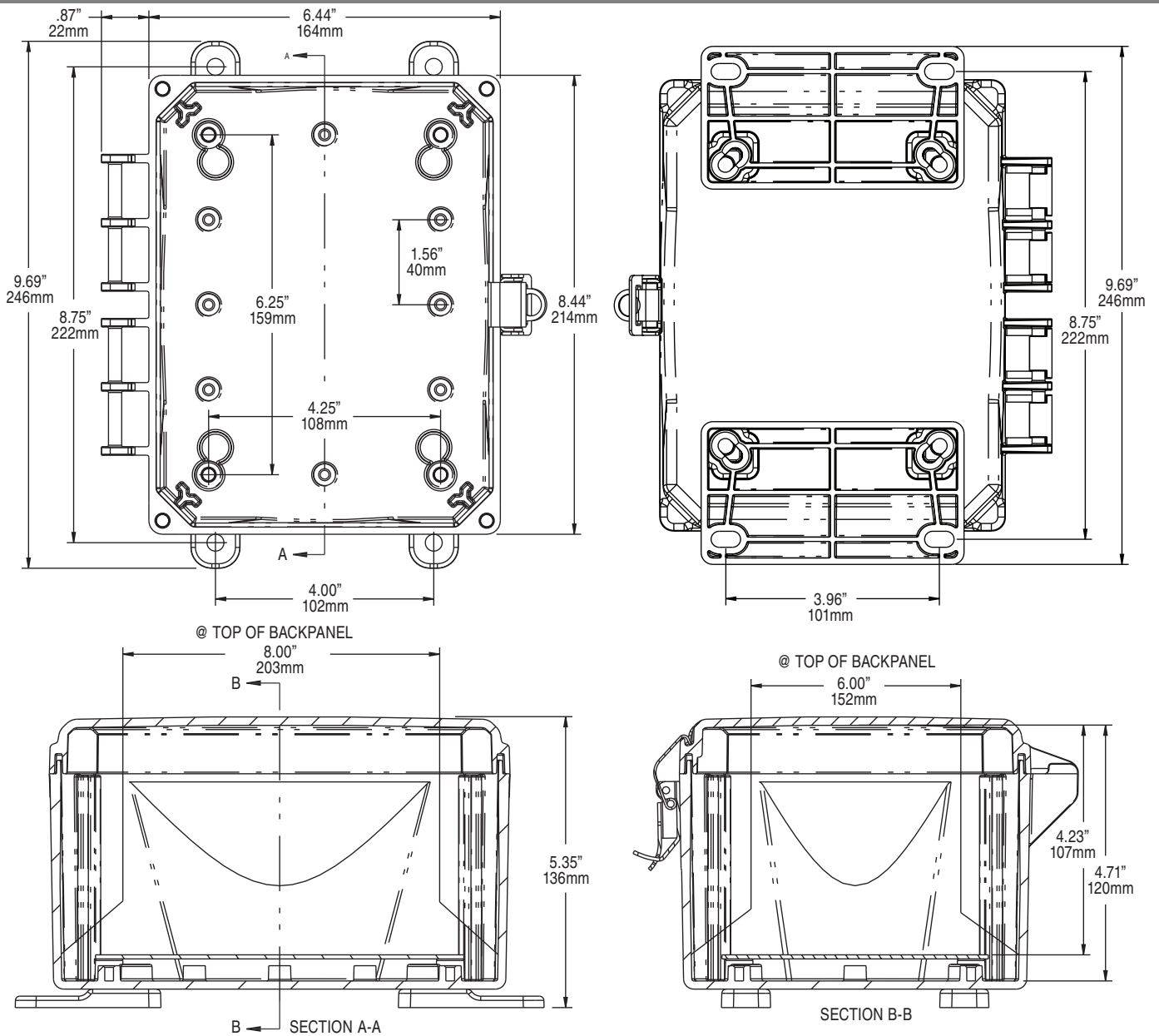
| Flammable / UV Ratings | Test Spec. | Unit | Premium Line |
|------------------------|------------|------|--------------|
| Flame Rating - UL      | UL 94      | -    | 5VA          |
| Outdoor UV Exposure    | UL         | -    | F1           |

| 8064 P/N    | 4X IP66 | 6P IP68 | Hinged Cover | Screw Cover | Opaque Cover | Clear Cover | Mounting Feet | Mounting Flange | Stainless Steel Locking Latch | Non-Metallic Locking Latch |
|-------------|---------|---------|--------------|-------------|--------------|-------------|---------------|-----------------|-------------------------------|----------------------------|
| H8064S      | ✓       | ✓       |              | ✓           | ✓            |             | ✓             |                 |                               |                            |
| H8064SC     | ✓       | ✓       |              | ✓           |              | ✓           | ✓             |                 |                               |                            |
| H8064SF     | ✓       | ✓       |              | ✓           | ✓            |             |               | ✓               |                               |                            |
| H8064SCF    | ✓       | ✓       |              | ✓           |              | ✓           |               | ✓               |                               |                            |
| H8064H      | ✓       |         | ✓            | ✓           | ✓            |             | ✓             |                 |                               |                            |
| H8064HC     | ✓       |         | ✓            | ✓           |              | ✓           | ✓             |                 |                               |                            |
| H8064HF     | ✓       |         | ✓            | ✓           | ✓            |             |               | ✓               |                               |                            |
| H8064HCF    | ✓       |         | ✓            | ✓           |              | ✓           |               | ✓               |                               |                            |
| H8064HLL    | ✓       |         | ✓            |             | ✓            |             | ✓             |                 | ✓                             |                            |
| H8064HCLL   | ✓       |         | ✓            |             |              | ✓           | ✓             |                 | ✓                             |                            |
| H8064HFLL   | ✓       |         | ✓            |             | ✓            |             |               | ✓               | ✓                             |                            |
| H8064HCFL   | ✓       |         | ✓            |             |              | ✓           |               | ✓               | ✓                             |                            |
| H8064HNL    | ✓       |         | ✓            |             | ✓            |             | ✓             |                 |                               | ✓                          |
| H8064HCNL   | ✓       |         | ✓            |             |              | ✓           | ✓             |                 |                               | ✓                          |
| H8064HFNL   | ✓       |         | ✓            |             | ✓            |             |               | ✓               |                               | ✓                          |
| H8064HCFNL  | ✓       |         | ✓            |             |              | ✓           |               | ✓               |                               | ✓                          |
| H8064H-6P   | ✓       | ✓       | ✓            | ✓           | ✓            |             | ✓             |                 |                               |                            |
| H8064HC-6P  | ✓       | ✓       | ✓            | ✓           |              | ✓           | ✓             |                 |                               |                            |
| H8064HF-6P  | ✓       | ✓       | ✓            | ✓           | ✓            |             |               | ✓               |                               |                            |
| H8064HCF-6P | ✓       | ✓       | ✓            | ✓           |              | ✓           |               | ✓               |                               |                            |

TORQUE SPECIFICATIONS - Mounting Brackets - 1/4"-20 x 0.25 SS, countersunk Phillips drive screws (torque limit = 20 in. lbs.) | Covers / Doors - Torque for corner screws is 10 in. lbs.



# 8X6X4 PREMIUM LINE



Register online to download this drawing off the Integra website at [www.integraenclosures.com](http://www.integraenclosures.com) | Your company's logo or other information on the lid. Consult factory for details.

## Accessories for 8x6x4 (For complete accessories, see pages 73-77)



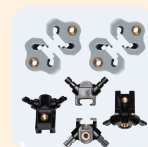
### Back Panels

**ABP86** - Aluminum panel  
**SBP86** - Steel panel  
**PVCBP86** - PVC panel



### Aluminum Swing Out Panels

**ABP-86USP/USOPK** - Complete panel kit  
**ABP-86USP** - Aluminum swing out panels only  
**USOPK** - Hardware only



### Back Panel Adjustment Kit

**BPAKG** - Gray, Set Screw  
**BPAKB** - Black, Set Screw  
**UBPAKG** - Gray, Thumb Screw  
**UBPAKB** - Black Thumb Screw



### Air Vents

**VENT 3** - Aluminum louvered  
**VENT 2** - Outdoor labyrinth



### Steel Swing Out Panels

**SBP-86USP/USOPK** - Complete panel kit  
**SBP-86USP** - Steel swing out panels only  
**USOPK** - Hardware only



### Cord Grips

IP68/NEMA 4X/6P rated  
 See page 72 for more details and part numbers.



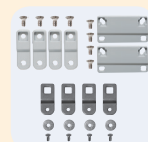
### Din Rail

**DIN 6** - 2 rails, 4 screws



### Pole Mounting Kit

**PMKG-26** - 2" pole  
**PMKG-36** - 3" pole  
**PMKG-46** - 4" pole  
**PMKG-126** - 12" pole



### Mounting Feet & Flange Kits

**MFKG** - Premium line feet  
**MFKSS** - Stainless steel feet  
**MFLK6** - 6" Flange kit