



Product Change Notification

TE Connectivity

Product Change Notification: PCN-21-120793

PCN Date: 16-NOV-21

TE would like to inform you of the following change(s) to the listed TE Connectivity Product. In case of any further questions about this change(s), please contact your TE Connectivity Sales Engineer. Affected part, drawing and/or specification numbers are listed on the attached sheet(s).

General Product Description:

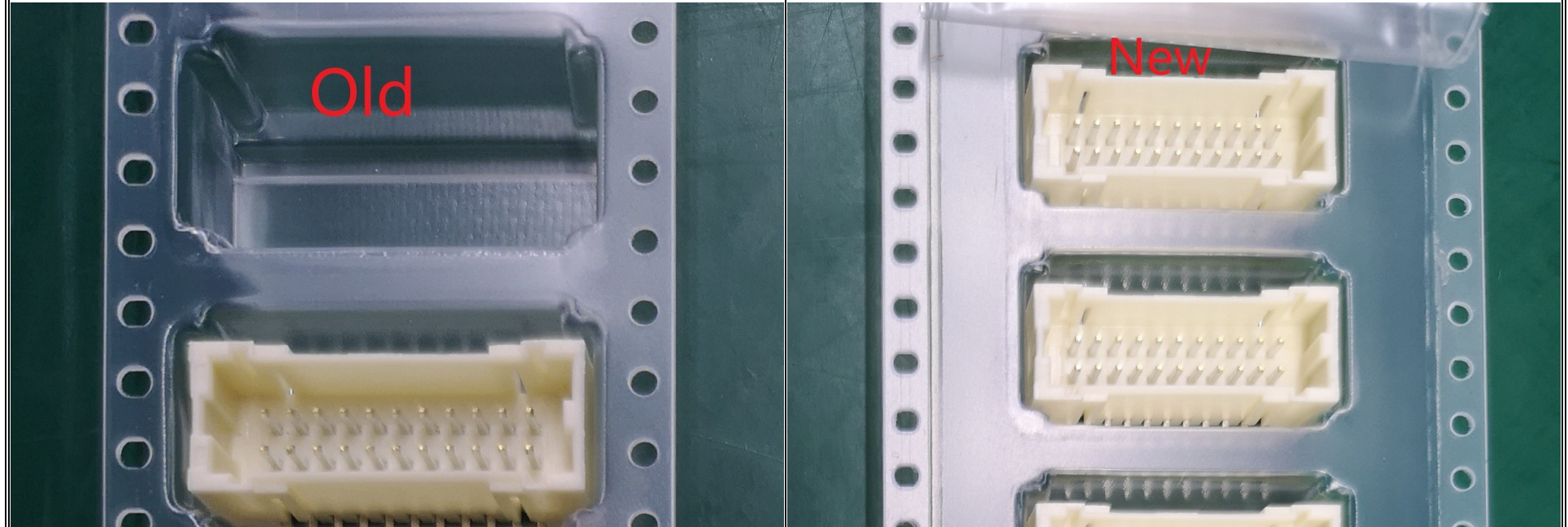
1.5mm PITCH DOUBLE ROW POST HDR SMT TYPE Before: the width of emboss is 32mm After: the width of emboss is 44mm

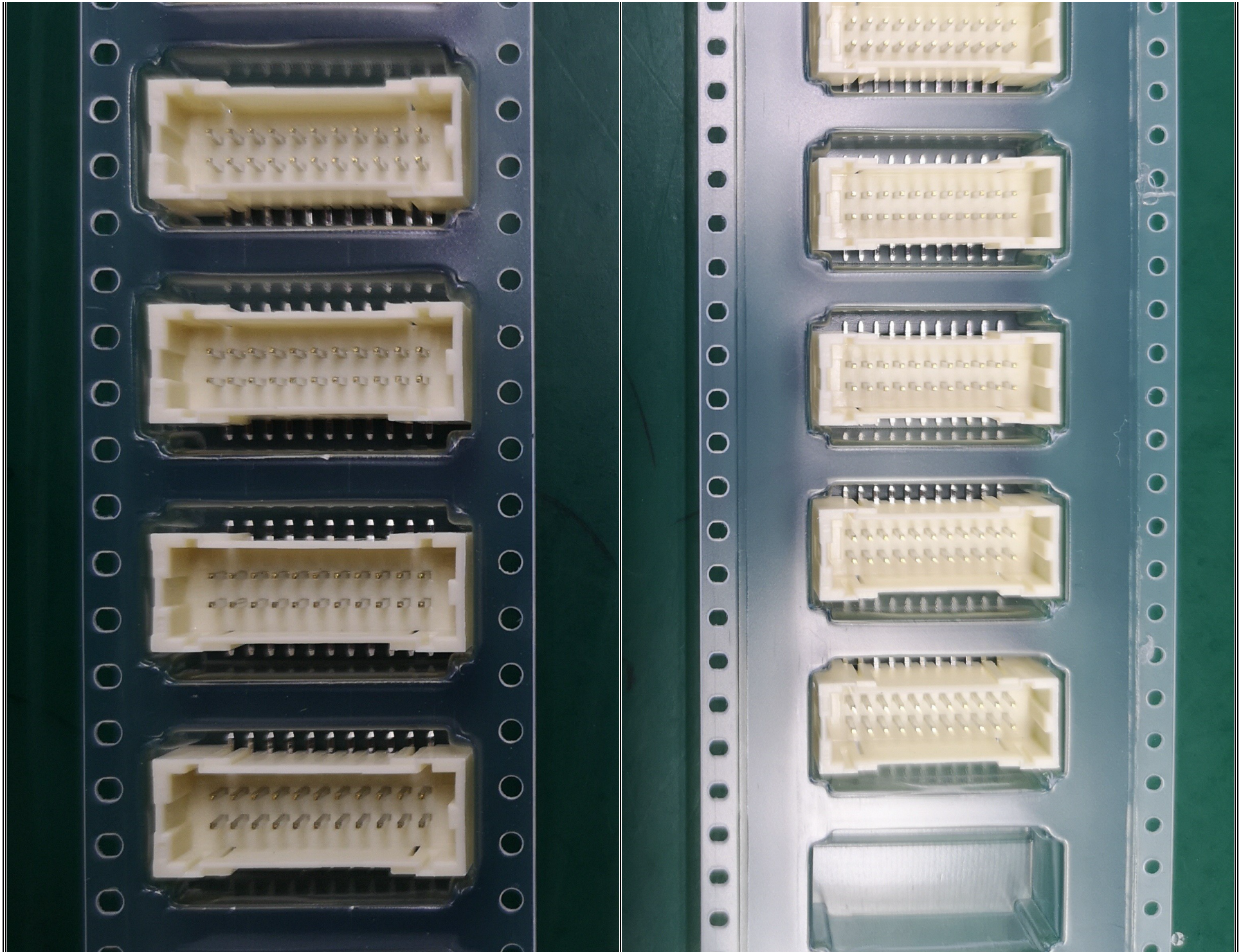
Description of Changes

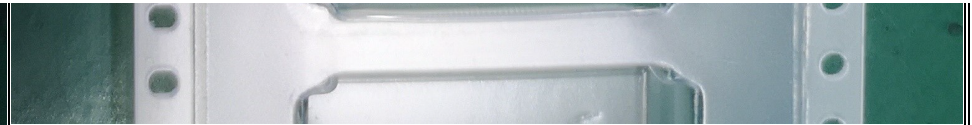
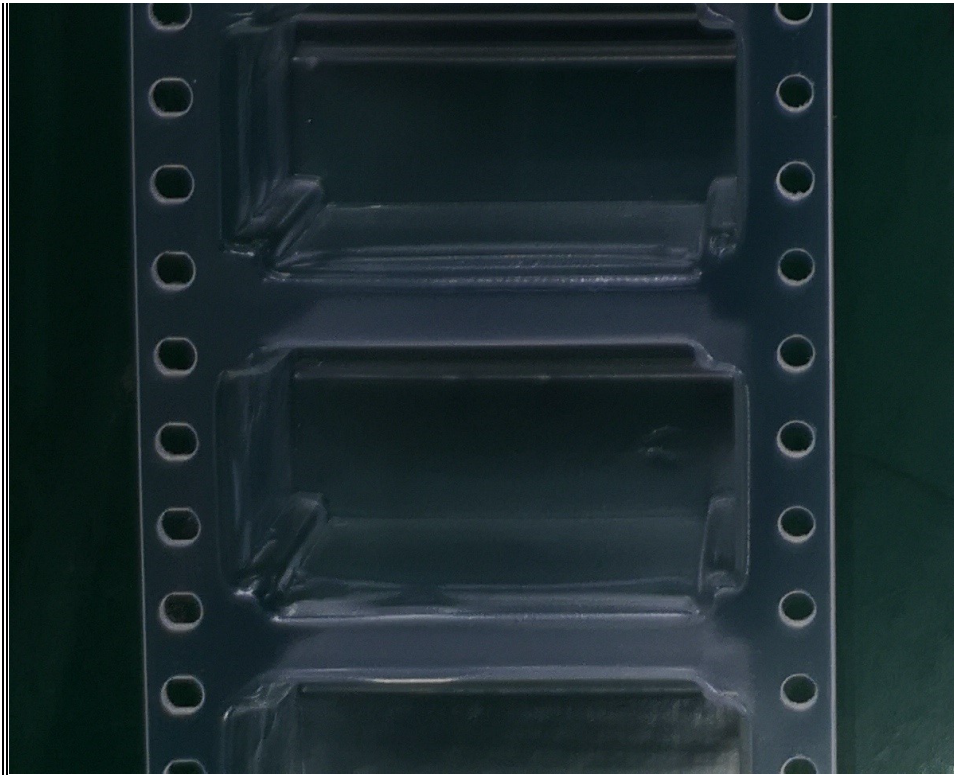
1.5mm PITCH DOUBLE ROW POST HDR SMT TYPE Before: the width of emboss is 32mm After: the width of emboss is 44mm

the width of emboss: 32mm

the width of emboss: 44mm







Other attachments:

[drop test report](#)

Reason for Changes:

PCN Attributes:

Product Category:

Headers

Change Feature:

Drawing adapted to part change

Remarks:

Kind of Change:

Drawing

Potential Customer Impact:

Revision adapted

Estimated Dates:

Last Order Date (Obsolete Parts Only):

First Ship Date of Changed Items (Changed Parts Only):

15-FEB-2022

Last Ship Date of Changed Items (Obsolete Parts Only):

Last Date for Mixed Shipments: (Changed Parts Only):

	No Mixed Shipments
Effectivity Date:	Date of First Samples:

Part Number(s) being Modified:

Part Number	Part Discontinued per PCN	Customer Drawing	Customer Part Number	Alias Part Number(s)	Substitute Part Number	Substitute Alias Part Number(s)	Description Of Difference
2-292229-2	NO						

The documents listed below are being modified. Related parts that are not explicitly listed on this PCN are not being modified or discontinued as per the PCN. The Last Order Date, Last Ship Date, First Date to Ship Changed Parts and last date for Mixed Shipments apply only to parts explicitly listed on this PCN.

Customer Drawing(s) Being Modified:

Drawing Number	Related Part Number	Customer Part Number	Current Revision	New Revision
292229	3-292229-6, 2-292229-2			

Part Number(s) being Modified:

Part Number	Part Discontinued per PCN	Customer Drawing	Customer Part Number	Alias Part Number(s)	Substitute Part Number	Substitute Alias Part Number(s)	Description Of Difference
2-292229-2	NO						

The documents listed below are being modified. Related parts that are not explicitly listed on this PCN are not being modified or discontinued as per the PCN. The Last Order Date, Last Ship Date, First Date to Ship Changed Parts and last date for Mixed Shipments apply only to parts explicitly listed on this PCN.

Customer Drawing(s) Being Modified:

Drawing Number	Related Part Number	Customer Part Number	Current Revision	New Revision
292229	2-292229-2			

Part Number(s) being Modified:

Part Number	Part Discontinued per PCN	Customer Drawing	Customer Part Number	Alias Part Number(s)	Substitute Part Number	Substitute Alias Part Number(s)	Description Of Difference
-------------	---------------------------	------------------	----------------------	----------------------	------------------------	---------------------------------	---------------------------

Part Number	Part Discontinued per PCN	Customer Drawing	Customer Part Number	Alias Part Number(s)	Substitute Part Number	Substitute Alias Part Number(s)	Description Of Difference
2-292229-2	NO						

The documents listed below are being modified. Related parts that are not explicitly listed on this PCN are not being modified or discontinued as per the PCN. The Last Order Date, Last Ship Date, First Date to Ship Changed Parts and last date for Mixed Shipments apply only to parts explicitly listed on this PCN.

Customer Drawing(s) Being Modified:

Drawing Number	Related Part Number	Customer Part Number	Current Revision	New Revision
292229	3-292229-6			

Part Number(s) being Modified:

Part Number	Part Discontinued per PCN	Customer Drawing	Customer Part Number	Alias Part Number(s)	Substitute Part Number	Substitute Alias Part Number(s)	Description Of Difference
2-292229-2	NO						

The documents listed below are being modified. Related parts that are not explicitly listed on this PCN are not being modified or discontinued as per the PCN. The Last Order Date, Last Ship Date, First Date to Ship Changed Parts and last date for Mixed Shipments apply only to parts explicitly listed on this PCN.

Customer Drawing(s) Being Modified:

Drawing Number	Related Part Number	Customer Part Number	Current Revision	New Revision
292229	2-292229-2			

Part Number(s) being Modified:

Part Number	Part Discontinued per PCN	Customer Drawing	Customer Part Number	Alias Part Number(s)	Substitute Part Number	Substitute Alias Part Number(s)	Description Of Difference
2-292229-2	NO						

<p style="text-align: center;">TEST RECORD Tyco Electronics AMP GUANGDONG LTD.</p>	Title of Test <input type="checkbox"/> Vibration <input checked="" type="checkbox"/> Free Drop Test <input type="checkbox"/> Transportation		Test Number <p style="text-align: center;">CPK-202111001</p>	
	Tester <p style="text-align: center;">Hero Cheng</p>		Date Started <p style="text-align: center;">08/Nov/2021</p>	Date Complete <p style="text-align: center;">09/Nov/2021</p>
	Checker <p style="text-align: center;">Trustin Zhang</p>			
Requester <p style="text-align: center;">QE(Billy Lee)</p>	Test Location <p style="text-align: center;">Test Lab, Tyco / AMP Guangdong Ltd</p>		Product Weight <p style="text-align: center;">3.9 kg</p>	Quantity per Box <p style="text-align: center;">1200 pcs/box</p>
Product Description <p style="text-align: center;">PN 2-292229-2, Mini CT Connector 1.5mm PITCH HDR ASS'Y</p>			Part No <p style="text-align: center;">2-292229-2</p>	No of Boxes <p style="text-align: center;">1</p>

TEST PROCEDURE:

- ISTA 1A**
10kg less than ; 760mm, 10-19kg less than ;610mm
(10 locations ; 1-corner, 2-btm edge(W), 3-btm-edge(L) , 4-edge(H), 5,6,7,8,9,10-6 panels)
- ISTA 2A**
10kg less than ; 970mm, 10-19kg less than ;810mm
(10 locations ; 1-corner, 2-btm edge(W), 3-btm-edge(L) , 4-edge(H), 5,6,7,8,9,10-6 panels)
- 109-132-2 Tyco Electronics, Test specification**
Up to 9.06kg incl. ; Assurance level -1(609mm),level-2(381mm),level-3(229mm)
(6 locations ; 1-btm, 2-btm edge(W), 3-btm-edge(L),4-btm corner, 5-btm corner,6-top)
- JIS Z 0200**
Up to 10kg incl. ; Assurance level -1(800mm),level-2(600mm),level-3(400mm)
(10 locations ; 1-corner, 2-btm edge(W), 3-btm-edge(L) , 4-edge(H), 5,6,7,8,9,10-6 panels)

CONDITIONS:

Drop height	760 mm
Temperature	26.3 degrees
Humidity	60%
Box Size	380L-380W-200H (mm)
Box Type	<input checked="" type="checkbox"/> RSC <input type="checkbox"/> FOL
Impact Surface	Concrete floor
Remarks	weather : Sunny

PRODUCT DESCRIPTION:

Pkg method: 400 pcs/reel x3 =1200 shipping box
 The detail packaging instruction is according to PS 107-107713 Rev A.
---Test result: There are no any products damaged and defect after drop test.
---The corner of shipping box impacted were distorted, but not damaged

RESULTS:

Test Result: **Passed** **Failed**

NG Ratio

0%, 0 pcs (NG) / 1200 pcs (OK) : 1 BOX