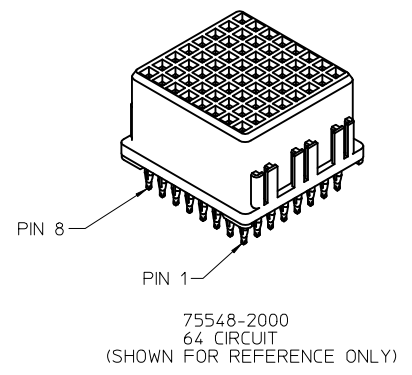
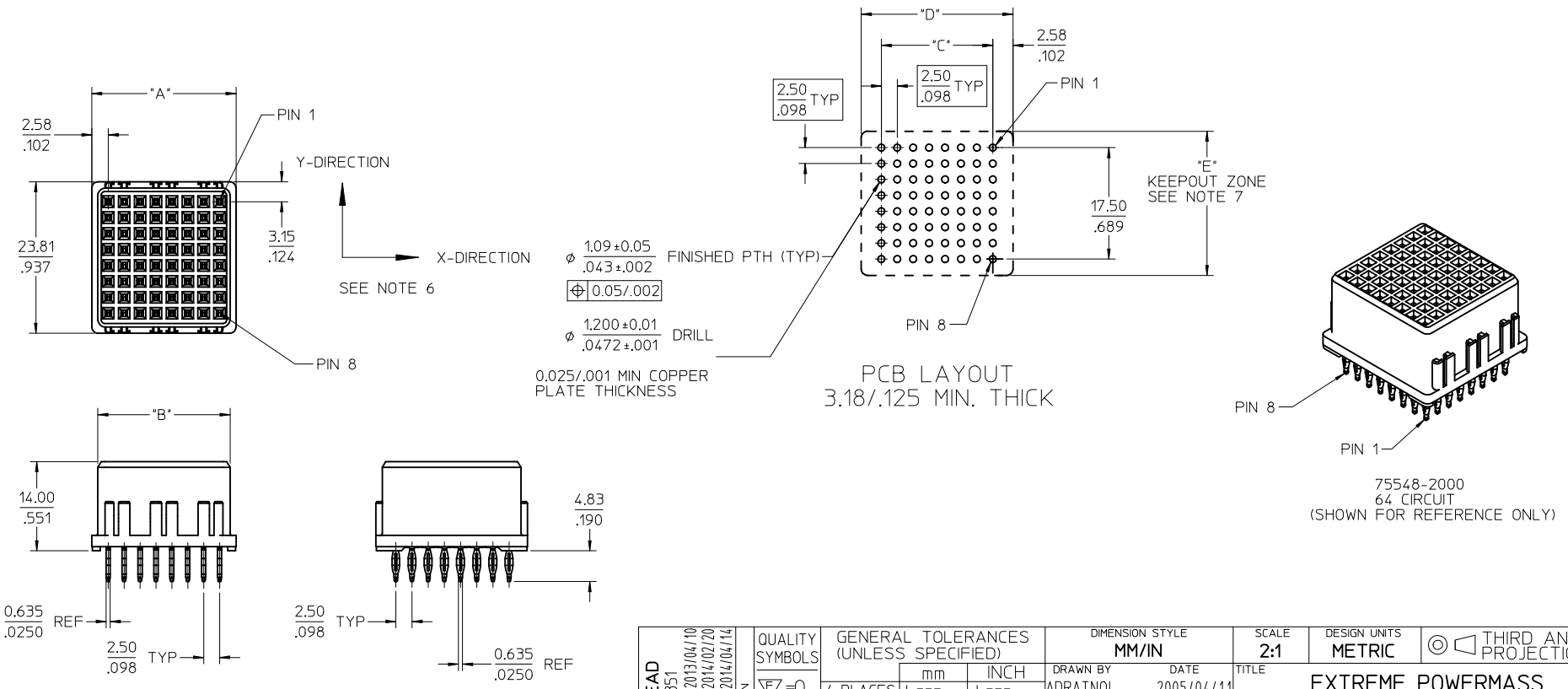


| PART NUMBER | CIRCUIT SIZE | DIM "A" | DIM "B" | DIM "C" | DIM "D" | MATING MODULE |
|-------------|--------------|------------|------------|------------|------------|---------------|
| 75548-6000 | 64 | 22.66/.892 | 20.76/.817 | 17.50/.689 | 27.50/1.08 | 75568-1000 |
| 75548-6056 | 56 | 20.16/.794 | 18.26/.719 | 15.00/.591 | 25.00/.984 | 75568-1056 |
| 75548-6048 | 48 | 17.66/.695 | 15.26/.620 | 12.50/.492 | 22.50/.885 | 75568-1048 |
| 75548-6040 | 40 | 15.16/.597 | 13.26/.522 | 10.00/.394 | 20.00/.787 | 75568-1040 |
| 75548-6032 | 32 | 12.66/.498 | 10.76/.424 | 7.50/.295 | 17.50/.689 | 75568-1032 |
| 75548-6024 | 24 | 10.16/.400 | 8.26/.325 | 5.00/.197 | 15.00/.590 | 75568-1024 |

30μ IN MIN SELECT HARD GOLD IN CONTACT AREA WITH
100μ IN MIN SELECT TIN IN TAIL AREA OVER
50μ IN MIN NICKEL OVERALL

- NOTES:
- MATERIALS:
 - HOUSING: 30% GLASS FILLED, LCP 94V-0, COLOR: BLACK
 - TERMINALS: COPPER ALLOY
 - SEE CHART FOR REFERENCE DOCUMENTS
 - AVERAGE INSERTION FORCE INTO PCB IS 8.2 Kg/18 LBS PER TAIL
 - MODULE ASSEMBLY IS RoHS COMPLIANT
 - GATHERABILITY: ±0.65/.026 X-DIRECTION
±1.30/.051 Y-DIRECTION
 - TERMINAL RETENTION INTO HOUSING 0.45 Kg/1.0 LB
 - KEEPOUT ZONE DIMENSION "E":
25.00/.984 ON PCB SURFACE
26.00/1.024 AT 3.50/1.38 ABOVE PCB SURFACE
46.00/1.811 AT 9.00/3.54 ABOVE PCB SURFACE
 - RECEPTACLE MATES WITH PLUG ASSEMBLY: 75568-5***



REFERENCE DOCUMENTS

| | |
|---------------|--|
| PS-75431-999 | PRODUCT SPECIFICATION: PERFORMANCE AND RATINGS |
| SD-75541-*** | MODULE CONFIGURATION DRAWING |
| AS-75541-0000 | APPLICATION SPECIFICATION |

| REV | DESCRIPTION |
|-----|---|
| B | REMOVE TIN/LEAD EC NO: UCP2013-4351 DRAWN:WHIPPLE 2013/04/10 CHKD:BANURA 2014/02/20 APPR:SMILLER 2014/04/14 |

| QUALITY SYMBOLS | GENERAL TOLERANCES (UNLESS SPECIFIED) |
|-----------------|--|
| ▽=0 | mm INCH |
| ▽=0 | 4 PLACES ± --- ± --- |
| ▽=0 | 3 PLACES ± --- ± .008 |
| ▽=0 | 2 PLACES ± 0.20 ± .013 |
| ▽=0 | 1 PLACE ± 0.33 ± --- |
| ▽=0 | 0 PLACE ± ± |
| | ANGULAR ±1/2° |
| | DRAFT WHERE APPLICABLE MUST REMAIN WITHIN DIMENSIONS |

| DIMENSION STYLE | | SCALE | | DESIGN UNITS | | THIRD ANGLE PROJECTION | |
|-----------------|------------|--------------|--|---|--|------------------------|--|
| MM/IN | | 2:1 | | METRIC | | THIRD ANGLE PROJECTION | |
| DRAWN BY | DATE | TITLE | | EXTREME POWERMASS SIGNAL MODULE RECEPTACLE molex DOCUMENT NO. SD-75548-100 SHEET NO. 1 OF 1 | | | |
| AD RATNOL | 2005/04/11 | CHECKED BY | | | | | |
| MDATA | 2005/04/11 | APPROVED BY | | | | | |
| APATEL | 2005/04/11 | MATERIAL NO. | | SEE CHART | | | |

THIS DRAWING CONTAINS INFORMATION THAT IS PROPRIETARY TO MOLEX INCORPORATED AND SHOULD NOT BE USED WITHOUT WRITTEN PERMISSION