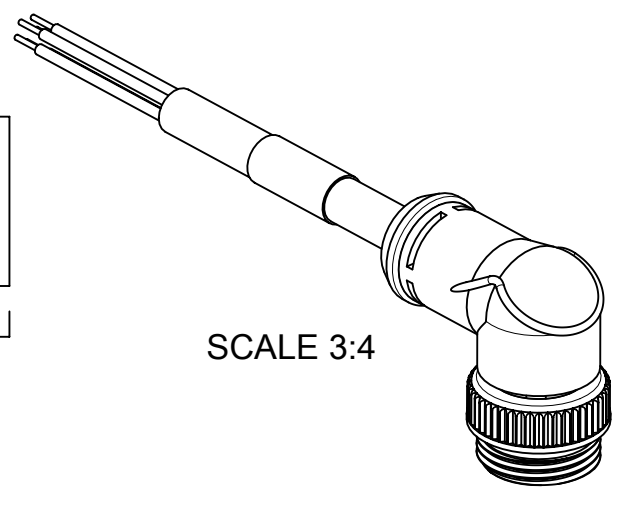
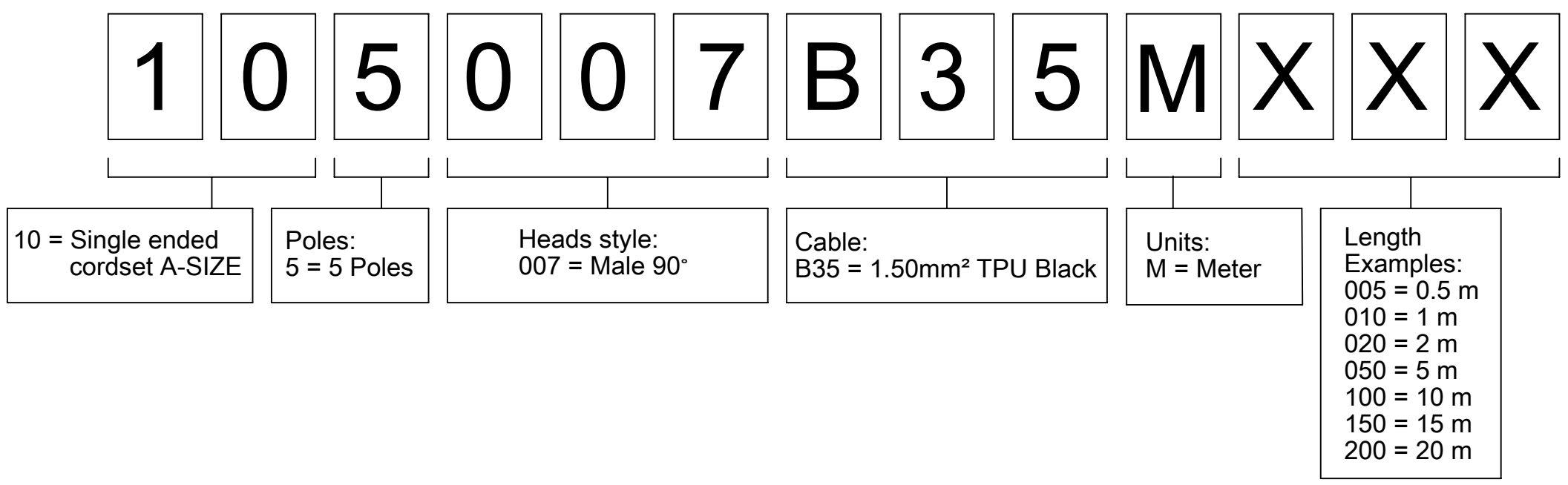


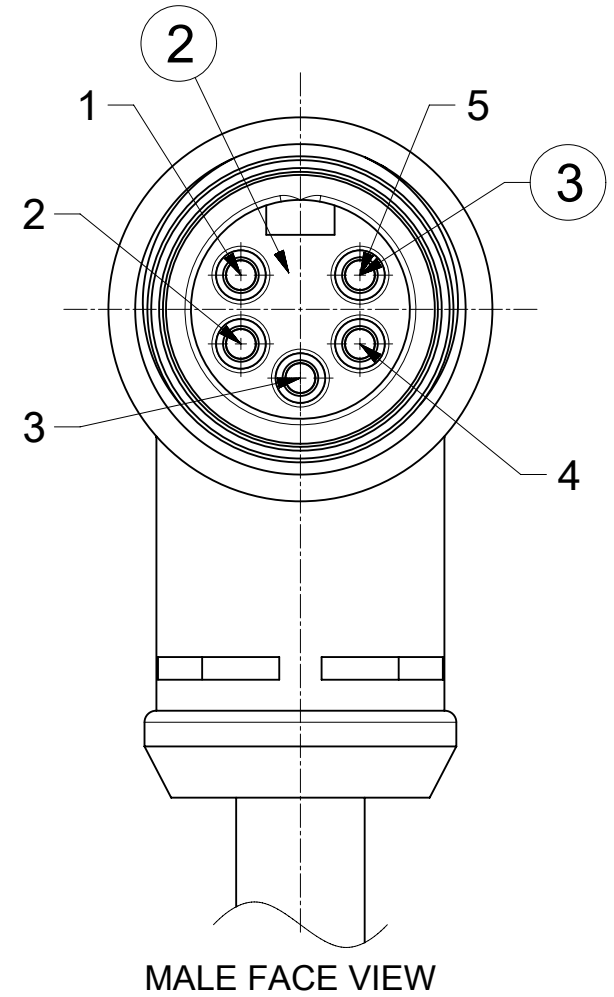
| MATERIAL NO. | ENGINEERING NO. | FINISHED LENGTH     |
|--------------|-----------------|---------------------|
| 1300068277   | 105007B35M010   | 1 M (3 FT 3.37 IN)  |
| 1300068169   | 105007B35M020   | 2 M (6 FT 6.74 IN)  |
| 1300068170   | 105007B35M050   | 5 M (16 FT 4.85 IN) |
| 1300068171   | 105007B35M100   | 10 M (32 FT 9.7 IN) |
| 1300068172   | 105007B35M200   | 20 M (65 FT 4.7 IN) |
| 1300068173   | 105007B35M300   | 30 M (98 FT 5.1 IN) |

### PART NUMBER MATRIX



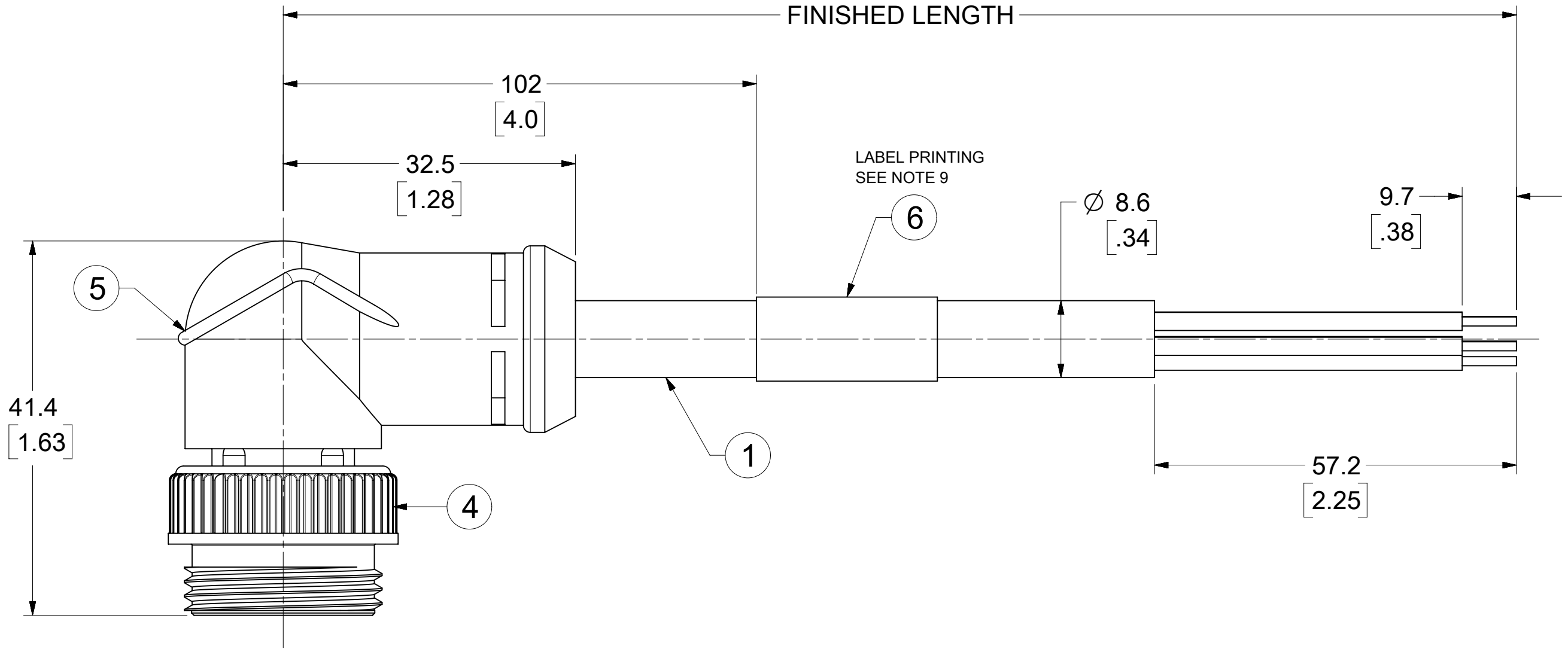
#### WIRING DIAGRAM

|   |              |
|---|--------------|
| 1 | BLACK        |
| 2 | BLUE         |
| 3 | GREEN/YELLOW |
| 4 | BROWN        |
| 5 | WHITE        |



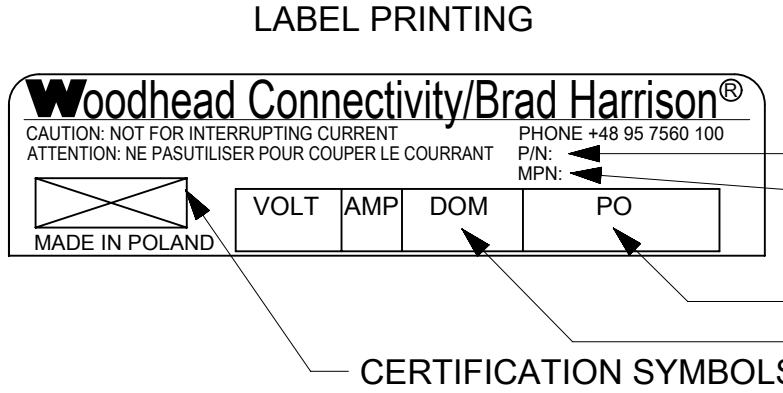
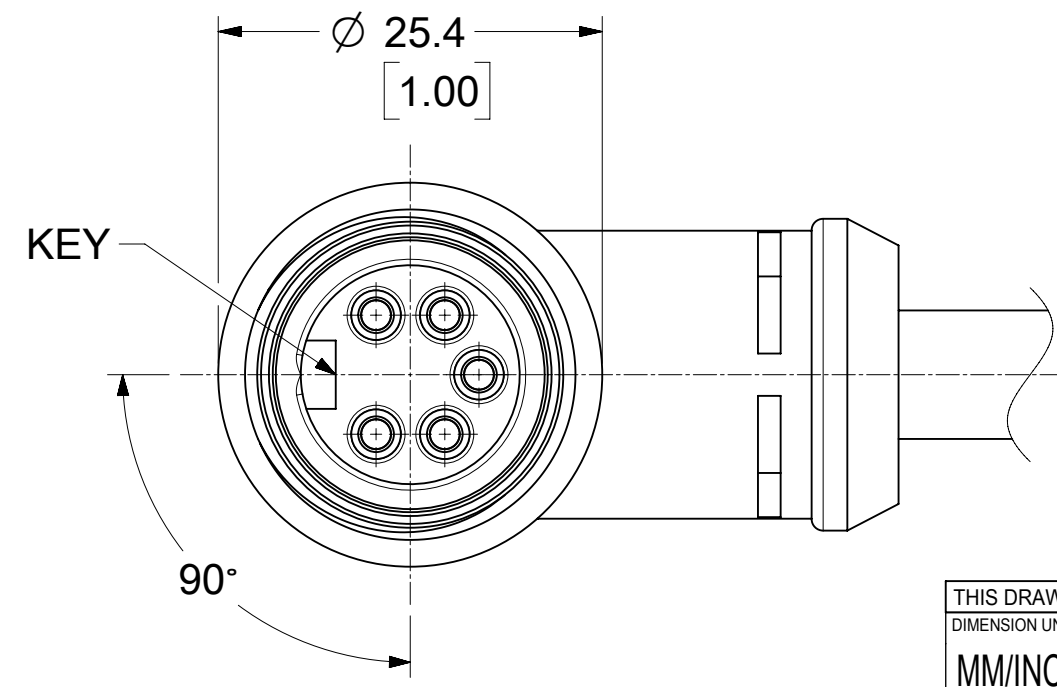
#### NOTES:

- MATERIAL: AS NOTED
- FINISH: AS NOTED
- ELECTRICAL:  
VOLTAGE RATING: 600 V  
CURRENT RATING: 10 A
- TEMPERATURE RATING:  
STATIC: -40 °C TO 90 °C  
DYNAMIC: -25 °C TO 80 °C
- PROTECTION: IP67 (WHEN MATED)
- UL CERTIFICATION: UL LISTED, FILE NO. E152210
- COUPLING THREAD: 7/8"-16UN
- ALL DIMS ARE FOR REFERENCE UNLESS TOLERANCED OR NOTED OTHERWISE
- LABEL PRINTING ACC. STANDARD LABEL INSTRUCTION



#### CABLE LENGTH TOLERANCES

|                          |                         |
|--------------------------|-------------------------|
| <.3M [1FT]:              | +19mm-0 [ +.75in-0]     |
| .3 - .9M [1 - 3FT]:      | +44.5mm-0 [+1.75in-0]   |
| .9 - 1.8M [3 - 6FT]:     | +55.6mm-0 [+2.19in-0]   |
| 1.8 - 3.7M [6 - 12FT]:   | +88.9mm-0 [+3.50in-0]   |
| 3.7 - 7.3M [12 - 24FT]:  | +165.1mm-0 [+6.50in-0]  |
| 7.3-14.6M [24 - 48FT]:   | +317.5mm-0 [+12.50in-0] |
| 14.6 - 30.5M [48-100FT]: | +622.3mm-0 [+24.50in-0] |
| OVER 30M [100FT]         | +2% OF FINISHED LENGTH  |



ENGINEERING NO.  
MOLEX PN

PO NO.  
PRODUCT. DATE

#### BILL OF MATERIAL

| ITEM | DESCRIPTION                      | MATERIAL      | FINISH           |
|------|----------------------------------|---------------|------------------|
| 6    | LABEL                            | VINYL         | BLACK/YELLOW     |
| 5    | OVERMOLD                         | TPE           | BLACK            |
| 4    | COUPLING NUT                     | ZINC DIE CAST | BLACK E-COAT     |
| 3    | PIN CONTACT                      | Cu ALLOY      | GOLD OVER NICKEL |
| 2    | MALE INSERT                      | TPE           | BLACK            |
| 1    | #16-5 CABLE, WELD SLAG RESISTANT | TPU JACKET    | GREY             |
|      |                                  | MATERIAL      | FINISH           |

THIS DRAWING CONTAINS INFORMATION THAT IS PROPRIETARY TO MOLEX ELECTRONIC TECHNOLOGIES, LLC AND SHOULD NOT BE USED WITHOUT WRITTEN PERMISSION

|                                                      |                     |                                                       |              |        |                                       |
|------------------------------------------------------|---------------------|-------------------------------------------------------|--------------|--------|---------------------------------------|
| DIMENSION UNITS<br><b>MM/INCH</b>                    | SCALE<br><b>2:1</b> | CURRENT REV DESC: NOTES UPDATED, LABEL PRINTING ADDED | <b>molex</b> |        |                                       |
| GENERAL TOLERANCES (UNLESS SPECIFIED)                |                     | EC NO: 747270                                         |              |        |                                       |
| 4 PLACES ±                                           | ±                   | DRWN: RSCHIEBER                                       | 2023/04/18   |        |                                       |
| 3 PLACES ±                                           | ±                   | CHK'D: RSILLER                                        | 2023/04/27   |        |                                       |
| 2 PLACES ±                                           | ±                   | APPR: RSILLER                                         | 2023/04/27   |        |                                       |
| 1 PLACE ±                                            | ±                   | INITIAL REVISION:                                     |              |        |                                       |
| 0 PLACES ±                                           | ±                   | DRWN: RSTONE                                          | 2019/08/20   |        |                                       |
| ANGULAR TOL ± °                                      | ± °                 | APPR: BWOODMAN                                        | 2019/08/28   |        |                                       |
| DRAFT WHERE APPLICABLE MUST REMAIN WITHIN DIMENSIONS |                     | THIRD ANGLE PROJECTION                                | DRAWING      | SERIES | DOCUMENT NUMBER                       |
|                                                      |                     |                                                       | C-SIZE       | 130006 | 1300068169                            |
|                                                      |                     |                                                       |              |        | DOC TYPE DOC PART REVISION            |
|                                                      |                     |                                                       |              |        | PSD 000 B2                            |
|                                                      |                     |                                                       |              |        | MATERIAL NUMBER CUSTOMER SHEET NUMBER |
|                                                      |                     |                                                       |              |        | SEE TABLE GENERAL MARKET 1 OF 1       |