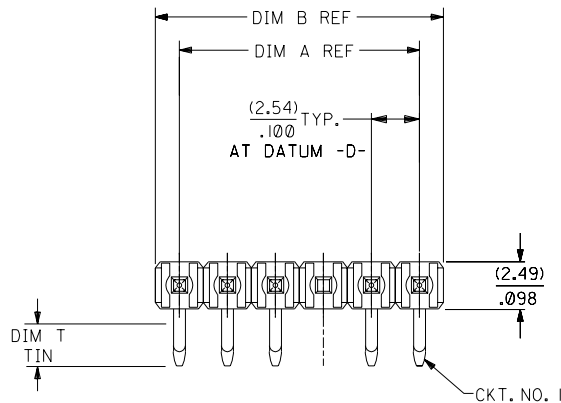
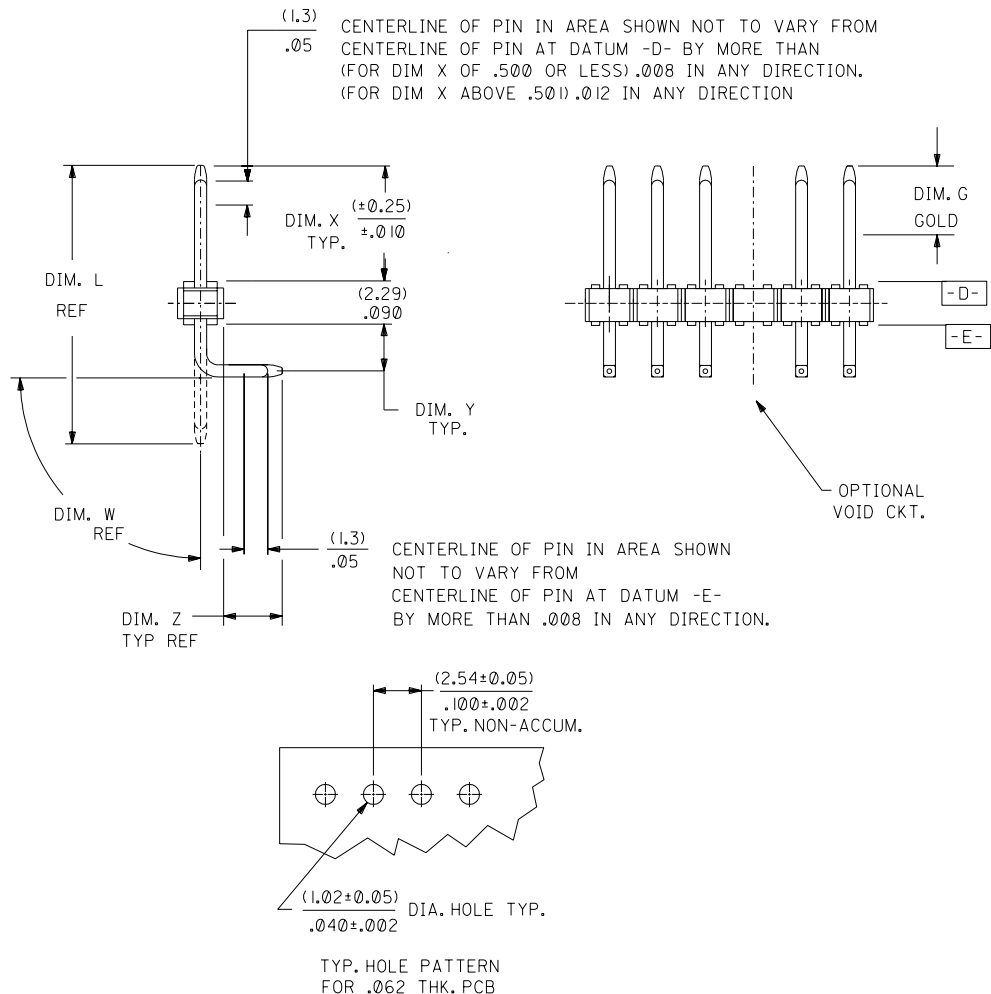


NO. OF CKTS.	DIM. A	DIM. B
2	.100 (2.54)	.200 (5.08)
3	.200 (5.08)	.300 (7.62)
4	.300 (7.62)	.400 (10.16)
5	.400 (10.16)	.500 (12.70)
6	.500 (12.70)	.600 (15.24)
7	.600 (15.24)	.700 (17.78)
8	.700 (17.78)	.800 (20.32)
9	.800 (20.32)	.900 (22.86)
10	.900 (22.86)	1.000 (25.40)
11	1.000 (25.40)	1.100 (27.94)
12	1.100 (27.94)	1.200 (30.48)
13	1.200 (30.48)	1.300 (33.02)
14	1.300 (33.02)	1.400 (35.56)
15	1.400 (35.56)	1.500 (38.10)
16	1.500 (38.10)	1.600 (40.64)
17	1.600 (40.64)	1.700 (43.18)
18	1.700 (43.18)	1.800 (45.72)
19	1.800 (45.72)	1.900 (48.26)
20	1.900 (48.26)	2.000 (50.80)
21	2.000 (50.80)	2.100 (53.34)
22	2.100 (53.34)	2.200 (55.88)
23	2.200 (55.88)	2.300 (58.42)
24	2.300 (58.42)	2.400 (60.96)
25	2.400 (60.96)	2.500 (63.50)
26	2.500 (63.50)	2.600 (66.04)
27	2.600 (66.04)	2.700 (68.58)
28	2.700 (68.58)	2.800 (71.12)
29	2.800 (71.12)	2.900 (73.66)
30	2.900 (73.66)	3.000 (76.20)
31	3.000 (76.20)	3.100 (78.74)
32	3.100 (78.74)	3.200 (81.28)
33	3.200 (81.28)	3.300 (83.82)
34	3.300 (83.82)	3.400 (86.36)
35	3.400 (86.36)	3.500 (88.90)
36	3.500 (88.90)	3.600 (91.44)



NOTES:

1. MATERIAL: 30% GLASS FILLED NYLON COLOR: BLACK
2. PIN PUSHOUT 3 LBS. MIN.
3. SOLDERABILITY PER ES-152.
4. PLATING: (159) PREPLATED BRIGHT TIN/LEAD (90/10) .000150 MIN (567) SELECT GOLD .000015 MIN SELECT TIN-LEAD .000100 MIN OVER .000050 MIN NICKEL. (569) SELECT GOLD .000030 MIN SELECT TIN-LEAD .000100 MIN OVER .000050 MIN NICKEL.
5. INDIVIDUAL CIRCUIT SIZES ARE CUT FROM 36 CIRCUIT PARTS.
6. PRODUCT SPECIFICATION: PS-10-07



T8	ADD 1057/1100 UCP2003-2520 06/03/2003 ELHAG
T7	ADD 1032/1066 UCP2003-2151 04/14/2003 ELHAG
6 A2	ADD 0963/1031 UCP2003-1747 02/13/2003 ELHAG
5 T6	ADD 0920/0968 UCP2003-1546 12/6/2002 SAMIEC
4 R	REV 0899 UCP2003-0590 10/7/2002 SAMIEC
3 T2	
2 R	
1 T8	

DIMENSIONS SHOWN (METRIC) INCH		▽ = 0 ▼ = 0		REVISE ONLY ON CAD SYSTEM	
UNLESS OTHERWISE SPECIFIED TOLERANCES: ANGULAR ± 1/2°					
		INCH		METRIC	
3 PLACES	± .010				
2 PLACES	± .014	± 0.25			
1 PLACE		± 0.36			
DRAFT WHERE APPLICABLE MUST REMAIN WITHIN DIMENSIONS					
DRWG. BY: JJS	CHK'D. BY: PATEL	SEE CHART		SDA-42377	
APP'D. BY: LENZ	SCALE: :	FILE NAME: S42377X1	SHEET NO. 1 OF 6	DATE: 09/15/88	DIV. C
THIS DRAWING CONTAINS INFORMATION THAT IS PROPRIETARY TO MOLEX INC. AND SHOULD NOT BE USED WITHOUT WRITTEN PERMISSION.					

42377

42377

	13	12	11	10	9	8	7	6	42377	4	3	2	1		
J	ENG. NO.	HEADER NO.	PIN NO.	DIM. L	DIM. X	DIM. Y	DIM. Z	DIM. W			NO OF CKTS	KINKED PINS	VOID CKTS	PACKAGING	EDPS NO IN COL
	A-42377-0422/0456	42312-0036	42663-BCA I22	.565 (14.35)	.244 (6.20)	.070 (1.78)	.135 (3.43)	90°	N/A ()	OVERALL ()	2-36	SMES-42003	NONE	40873-0041	1
	A-42377-0457/0491	42312-0036	42663-CFA I59	.685 (17.40)	.304 (7.72)	.070 (1.78)	.195 (4.95)	90°	N/A ()	OVERALL ()	2-36	SMES-42003	NONE	40873-0041	2
	A-42377-0492/0526	42312-0036	42663-ABA I59	.455 (11.56)	.149 (3.78)	.070 (1.78)	.120 (3.05)	90°	N/A ()	OVERALL ()	2-36	NO	NONE	40873-0041	3
I	A-42377-0527/0532	42312-0036	42663-BCA I59	.565 (14.35)	.244 (6.20)	.070 (1.78)	.135 (3.43)	90°	N/A ()	OVERALL ()	6-11	SMES-43499-0001	NONE	40873-0041	4
	A-42377-0658/0692	42312-0036	42663-FYA I59	1.070 (27.18)	.748 (19.00)	.070 (1.78)	.135 (3.43)	90°	N/A ()	OVERALL ()	2-36	SMES-42003	NONE	40873-0041	5
	A-42377-0693/0726	42312-0036	42663-BCA I59	.565 (14.35)	.244 (6.20)	.070 (1.78)	.135 (3.43)	90°	N/A ()	OVERALL ()	3-36	SMES-42003	2	40873-0041	6

	COLUMN NO. 1			COLUMN NO. 2			COLUMN NO. 3			COLUMN NO. 4			COLUMN NO. 5			COLUMN NO. 6		
	EDP NO.	ENG. NO.	NO OF CKTS	EDP NO.	ENG. NO.	NO OF CKTS	EDP NO.	ENG. NO.	NO OF CKTS	EDP NO.	ENG. NO.	NO OF CKTS	EDP NO.	ENG. NO.	NO OF CKTS	EDP NO.	ENG. NO.	NO OF CKTS
G	22-28-9026	A-42377-0422	2	22-28-9027	A-42377-0457	2	22-28-9028	A-42377-0492	2			2	423-77-0658	A-42377-0658	2	-	-	2
	22-28-9036	A-42377-0423	3	22-28-9037	A-42377-0458	3	22-28-9038	A-42377-0493	3			3	423-77-0659	A-42377-0659	3	423-77-0693	A-42377-0693	3
	22-28-9046	A-42377-0424	4	22-28-9047	A-42377-0459	4	22-28-9048	A-42377-0494	4			4	423-77-0660	A-42377-0660	4	423-77-0694	A-42377-0694	4
	22-28-9056	A-42377-0425	5	22-28-9057	A-42377-0460	5	22-28-9058	A-42377-0495	5			5	423-77-0661	A-42377-0661	5	423-77-0695	A-42377-0695	5
	22-28-9066	A-42377-0426	6	22-28-9067	A-42377-0461	6	22-28-9068	A-42377-0496	6	423-77-0527	A-42377-0527	6	423-77-0662	A-42377-0662	6	423-77-0696	A-42377-0696	6
	22-28-9076	A-42377-0427	7	22-28-9077	A-42377-0462	7	22-28-9078	A-42377-0497	7	423-77-0528	A-42377-0528	7	423-77-0663	A-42377-0663	7	423-77-0697	A-42377-0697	7
	22-28-9086	A-42377-0428	8	22-28-9087	A-42377-0463	8	22-28-9088	A-42377-0498	8	423-77-0529	A-42377-0529	8	423-77-0664	A-42377-0664	8	423-77-0698	A-42377-0698	8
	22-28-9096	A-42377-0429	9	22-28-9097	A-42377-0464	9	22-28-9098	A-42377-0499	9	423-77-0530	A-42377-0530	9	423-77-0665	A-42377-0665	9	423-77-0699	A-42377-0699	9
F	22-28-9106	A-42377-0430	10	22-28-9107	A-42377-0465	10	22-28-9108	A-42377-0500	10	423-77-0531	A-42377-0531	10	423-77-0666	A-42377-0666	10	423-77-0700	A-42377-0700	10
	22-28-9116	A-42377-0431	11	22-28-9117	A-42377-0466	11	22-28-9118	A-42377-0501	11	423-77-0532	A-42377-0532	11	423-77-0667	A-42377-0667	11	423-77-0701	A-42377-0701	11
	22-28-9126	A-42377-0432	12	22-28-9127	A-42377-0467	12	22-28-9128	A-42377-0502	12			12	423-77-0668	A-42377-0668	12	423-77-0702	A-42377-0702	12
	22-28-9136	A-42377-0433	13	22-28-9137	A-42377-0468	13	22-28-9138	A-42377-0503	13			13	423-77-0669	A-42377-0669	13	423-77-0703	A-42377-0703	13
	22-28-9146	A-42377-0434	14	22-28-9147	A-42377-0469	14	22-28-9148	A-42377-0504	14			14	423-77-0670	A-42377-0670	14	423-77-0704	A-42377-0704	14
	22-28-9156	A-42377-0435	15	22-28-9157	A-42377-0470	15	22-28-9158	A-42377-0505	15			15	423-77-0671	A-42377-0671	15	423-77-0705	A-42377-0705	15
	22-28-9166	A-42377-0436	16	22-28-9167	A-42377-0471	16	22-28-9168	A-42377-0506	16			16	423-77-0672	A-42377-0672	16	423-77-0706	A-42377-0706	16
E	22-28-9176	A-42377-0437	17	22-28-9177	A-42377-0472	17	22-28-9178	A-42377-0507	17			17	423-77-0673	A-42377-0673	17	423-77-0707	A-42377-0707	17
	22-28-9186	A-42377-0438	18	22-28-9187	A-42377-0473	18	22-28-9188	A-42377-0508	18			18	423-77-0674	A-42377-0674	18	423-77-0708	A-42377-0708	18
	22-28-9196	A-42377-0439	19	22-28-9197	A-42377-0474	19	22-28-9198	A-42377-0509	19			19	423-77-0675	A-42377-0675	19	423-77-0709	A-42377-0709	19
	22-28-9206	A-42377-0440	20	22-28-9207	A-42377-0475	20	22-28-9208	A-42377-0510	20			20	423-77-0676	A-42377-0676	20	423-77-0710	A-42377-0710	20
	22-28-9216	A-42377-0441	21	22-28-9217	A-42377-0476	21	22-28-9218	A-42377-0511	21			21	423-77-0677	A-42377-0677	21	423-77-0711	A-42377-0711	21
	22-28-9226	A-42377-0442	22	22-28-9227	A-42377-0477	22	22-28-9228	A-42377-0512	22			22	423-77-0678	A-42377-0678	22	423-77-0712	A-42377-0712	22
D	22-28-9236	A-42377-0443	23	22-28-9237	A-42377-0478	23	22-28-9238	A-42377-0513	23			23	423-77-0679	A-42377-0679	23	423-77-0713	A-42377-0713	23
	22-28-9246	A-42377-0444	24	22-28-9247	A-42377-0479	24	22-28-9248	A-42377-0514	24			24	423-77-0680	A-42377-0680	24	423-77-0714	A-42377-0714	24
	22-28-9256	A-42377-0445	25	22-28-9257	A-42377-0480	25	22-28-9258	A-42377-0515	25			25	423-77-0681	A-42377-0681	25	423-77-0715	A-42377-0715	25
	22-28-9266	A-42377-0446	26	22-28-9267	A-42377-0481	26	22-28-9268	A-42377-0516	26			26	423-77-0682	A-42377-0682	26	423-77-0716	A-42377-0716	26
	22-28-9276	A-42377-0447	27	22-28-9277	A-42377-0482	27	22-28-9278	A-42377-0517	27			27	423-77-0683	A-42377-0683	27	423-77-0717	A-42377-0717	27
	22-28-9286	A-42377-0448	28	22-28-9287	A-42377-0483	28	22-28-9288	A-42377-0518	28			28	423-77-0684	A-42377-0684	28	423-77-0718	A-42377-0718	28
	22-28-9296	A-42377-0449	29	22-28-9297	A-42377-0484	29	22-28-9298	A-42377-0519	29			29	423-77-0685	A-42377-0685	29	423-77-0719	A-42377-0719	29
C	22-28-9306	A-42377-0450	30	22-28-9307	A-42377-0485	30	22-28-9308	A-42377-0520	30			30	423-77-0686	A-42377-0686	30	423-77-0720	A-42377-0720	30
	22-28-9316	A-42377-0451	31	22-28-9317	A-42377-0486	31	22-28-9318	A-42377-0521	31			31	423-77-0687	A-42377-0687	31	423-77-0721	A-42377-0721	31
	22-28-9326	A-42377-0452	32	22-28-9327	A-42377-0487	32	22-28-9328	A-42377-0522	32			32	423-77-0688	A-42377-0688	32	423-77-0722	A-42377-0722	32
	22-28-9336	A-42377-0453	33	22-28-9337	A-42377-0488	33	22-28-9338	A-42377-0523	33			33	423-77-0689	A-42377-0689	33	423-77-0723	A-42377-0723	33
	22-28-9346	A-42377-0454	34	22-28-9347	A-42377-0489	34	22-28-9348	A-42377-0524	34			34	423-77-0690	A-42377-0690	34	423-77-0724	A-42377-0724	34
	22-28-9356	A-42377-0455	35	22-28-9357	A-42377-0490	35	22-28-9358	A-42377-0525	35			35	423-77-0691	A-42377-0691	35	423-77-0725	A-42377-0725	35
B	22-28-9366	A-42377-0456	36	22-28-9367	A-42377-0491	36	22-28-9368	A-42377-0526	36			36	423-77-0692	A-42377-0692	36	423-77-0726	A-42377-0726	36

R	SEE SHEET I	K4	SEE SHEET I	DIMENSIONS SHOWN METRIC INCH UNLESS OTHERWISE SPECIFIED TOLERANCES ANGLES IN °/P/P INCH METRIC 3 PLACE ± .005 --- 2 PLACE ± .01 ± 0.13 1 PLACE --- ± 0.25 DRAFT WHERE APPLICABLE MUST REMAIN WITHIN DIMENSIONS DRG. BY: SAMIEC DWG. BY: PATEL APP'D. BY: LENZ SCALE:	DIMENSIONS SHOWN METRIC INCH UNLESS OTHERWISE SPECIFIED TOLERANCES ANGLES IN °/P/P INCH METRIC 3 PLACE ± .005 --- 2 PLACE ± .01 ± 0.13 1 PLACE --- ± 0.25 DRAFT WHERE APPLICABLE MUST REMAIN WITHIN DIMENSIONS DRG. BY: SAMIEC DWG. BY: PATEL APP'D. BY: LENZ SCALE:	DIMENSIONS SHOWN METRIC INCH UNLESS OTHERWISE SPECIFIED TOLERANCES ANGLES IN °/P/P INCH METRIC 3 PLACE ± .005 --- 2 PLACE ± .01 ± 0.13 1 PLACE --- ± 0.25 DRAFT WHERE APPLICABLE MUST REMAIN WITHIN DIMENSIONS DRG. BY: SAMIEC DWG. BY: PATEL APP'D. BY: LENZ SCALE:	DIMENSIONS SHOWN METRIC INCH UNLESS OTHERWISE SPECIFIED TOLERANCES ANGLES IN °/P/P INCH METRIC 3 PLACE ± .005 --- 2 PLACE ± .01 ± 0.13 1 PLACE --- ± 0.25 DRAFT WHERE APPLICABLE MUST REMAIN WITHIN DIMENSIONS DRG. BY: SAMIEC DWG. BY: PATEL APP'D. BY: LENZ SCALE:	DIMENSIONS SHOWN METRIC INCH UNLESS OTHERWISE SPECIFIED TOLERANCES ANGLES IN °/P/P INCH METRIC 3 PLACE ± .005 --- 2 PLACE ± .01 ± 0.13 1 PLACE --- ± 0.25 DRAFT WHERE APPLICABLE MUST REMAIN WITHIN DIMENSIONS DRG. BY: SAMIEC DWG. BY: PATEL APP'D. BY: LENZ SCALE:	DIMENSIONS SHOWN METRIC INCH UNLESS OTHERWISE SPECIFIED TOLERANCES ANGLES IN °/P/P INCH METRIC 3 PLACE ± .005 --- 2 PLACE ± .01 ± 0.13 1 PLACE --- ± 0.25 DRAFT WHERE APPLICABLE MUST REMAIN WITHIN DIMENSIONS DRG. BY: SAMIEC DWG. BY: PATEL APP'D. BY: LENZ SCALE:	DIMENSIONS SHOWN METRIC INCH UNLESS OTHERWISE SPECIFIED TOLERANCES ANGLES IN °/P/P INCH METRIC 3 PLACE ± .005 --- 2 PLACE ± .01 ± 0.13 1 PLACE --- ± 0.25 DRAFT WHERE APPLICABLE MUST REMAIN WITHIN DIMENSIONS DRG. BY: SAMIEC DWG. BY: PATEL APP'D. BY: LENZ SCALE:	DIMENSIONS SHOWN METRIC INCH UNLESS OTHERWISE SPECIFIED TOLERANCES ANGLES IN °/P/P INCH METRIC 3 PLACE ± .005 --- 2 PLACE ± .01 ± 0.13 1 PLACE --- ± 0.25 DRAFT WHERE APPLICABLE MUST REMAIN WITHIN DIMENSIONS DRG. BY: SAMIEC DWG. BY: PATEL APP'D. BY: LENZ SCALE:	DIMENSIONS SHOWN METRIC INCH UNLESS OTHERWISE SPECIFIED TOLERANCES ANGLES IN °/P/P INCH METRIC 3 PLACE ± .005 --- 2 PLACE ± .01 ± 0.13 1 PLACE --- ± 0.25 DRAFT WHERE APPLICABLE MUST REMAIN WITHIN DIMENSIONS DRG. BY: SAMIEC DWG. BY: PATEL APP'D. BY: LENZ SCALE:	DIMENSIONS SHOWN METRIC INCH UNLESS OTHERWISE SPECIFIED TOLERANCES ANGLES IN °/P/P INCH METRIC 3 PLACE ± .005 --- 2 PLACE ± .01 ± 0.13 1 PLACE --- ± 0.25 DRAFT WHERE APPLICABLE MUST REMAIN WITHIN DIMENSIONS DRG. BY: SAMIEC DWG. BY: PATEL APP'D. BY: LENZ SCALE:	DIMENSIONS SHOWN METRIC INCH UNLESS OTHERWISE SPECIFIED TOLERANCES ANGLES IN °/P/P INCH METRIC 3 PLACE ± .005 --- 2 PLACE ± .01 ± 0.13 1 PLACE --- ± 0.25 DRAFT WHERE APPLICABLE MUST REMAIN WITHIN DIMENSIONS DRG. BY: SAMIEC DWG. BY: PATEL APP'D. BY: LENZ SCALE:	DIMENSIONS SHOWN METRIC INCH UNLESS OTHERWISE SPECIFIED TOLERANCES ANGLES IN °/P/P INCH METRIC 3 PLACE ± .005 --- 2 PLACE ± .01 ± 0.13 1 PLACE --- ± 0.25 DRAFT WHERE APPLICABLE MUST REMAIN WITHIN DIMENSIONS DRG. BY: SAMIEC DWG. BY: PATEL APP'D. BY: LENZ SCALE:	DIMENSIONS SHOWN METRIC INCH UNLESS OTHERWISE SPECIFIED TOLERANCES ANGLES IN °/P/P INCH METRIC 3 PLACE ± .005 --- 2 PLACE ± .01 ± 0.13 1 PLACE --- ± 0.25 DRAFT WHERE APPLICABLE MUST REMAIN WITHIN DIMENSIONS DRG. BY: SAMIEC DWG. BY: PATEL APP'D. BY: LENZ SCALE:	DIMENSIONS SHOWN METRIC INCH UNLESS OTHERWISE SPECIFIED TOLERANCES ANGLES IN °/P/P INCH METRIC 3 PLACE ± .005 ---
---	-------------	----	-------------	--	--	--	--	--	--	--	--	--	--	--	--	--	---