

Contact Information

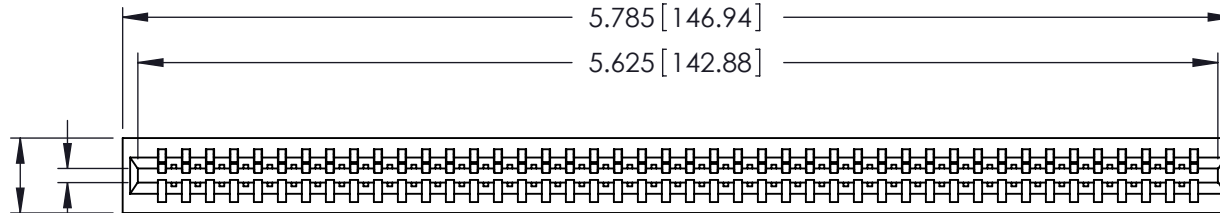
**520-P.C. Tail, Regular Point - Tail LG.=.175(4.45)
 .125" (3.18mm) Contact Spacing x .250" (6.35mm) Row Spacing**

THIS IS A C.A.D. GENERATED DRAWING
 DO NOT MAKE MANUAL REVISIONS TO MASTER.



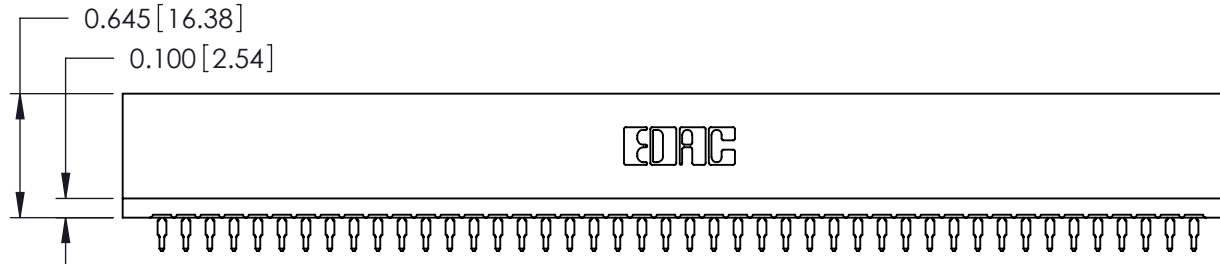
ISSUE NUMBER

ORIGINAL ①



Card Slot Accepts
 .054 (1.37) to .070 (1.78)
 Thick P.C. Board

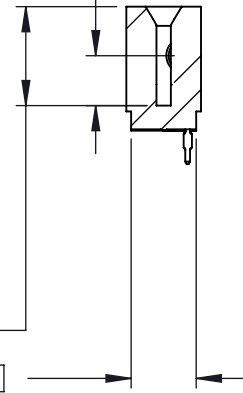
0.390 [9.91]




0.260 [6.60] Point of Contact

0.515 [13.08] Card Slot

0.340 [8.64]



| | | | |
|---|--|---|----------------|
| 746 Series Ultra-Mate Card Edge Connector - Press Fit | | ACAD REFERENCE NO. | 746-ENG MASTER |
| | | DRAWN: | J.LEE |
| Part Number: 746-044-520-101 | | CHECKED: | DATE: |
| | | SCALE: | SHEET 1 OF 1 |
|  EDAC INC TORONTO, ONTARIO CANADA YOUR CONNECTION TO QUALITY & SERVICE | | THESE DRAWINGS AND SPECIFICATIONS ARE THE PROPERTY OF EDAC INC. AND SHALL NOT BE REPRODUCED, OR COPIED OR USED AS THE BASIS FOR THE MANUFACTURE OR SALE OF APPARATUS WITHOUT WRITTEN PERMISSION. | |
| | | DRAWING NUMBER | 746-ENG MASTER |