

4

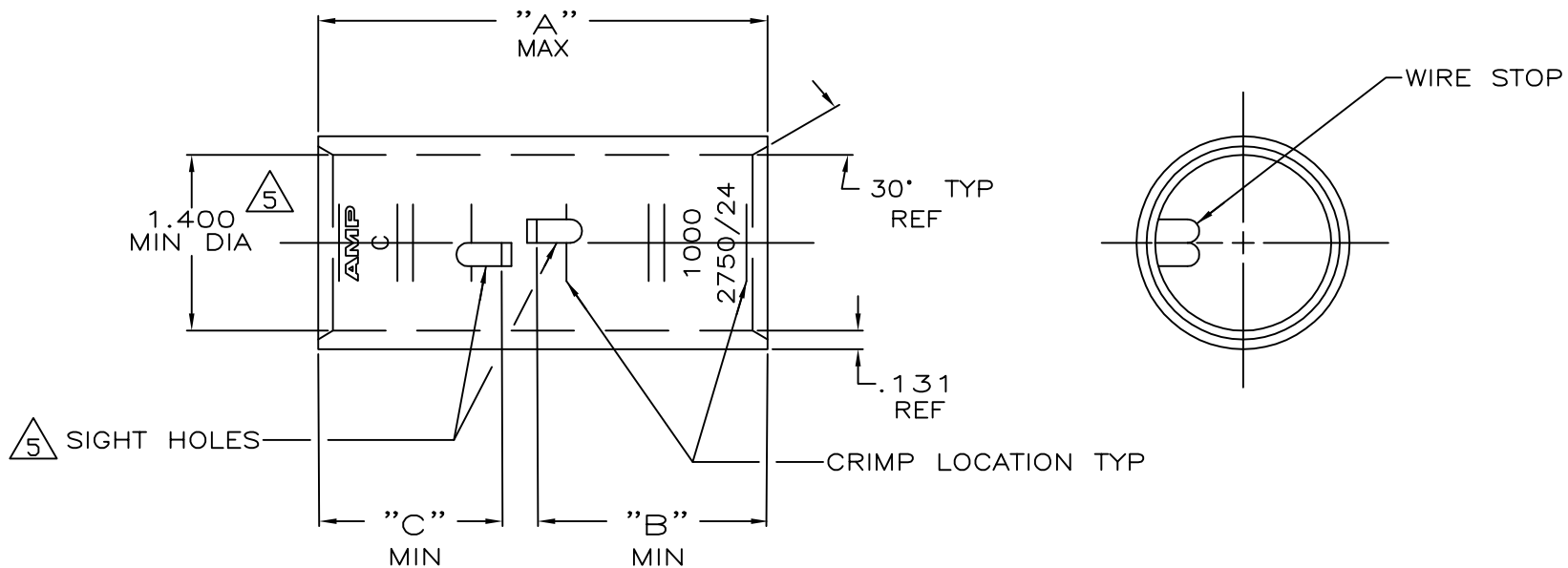
3

2

1

THIS DRAWING IS UNPUBLISHED. RELEASED FOR PUBLICATION
 © COPYRIGHT - By - ALL RIGHTS RESERVED.

| | | | | | | | |
|-----|------|-----------|-----|---------------|-----------|-----|------|
| LOC | DIST | REVISIONS | | | | | |
| G | 86 | P | LTR | DESCRIPTION | DATE | DWN | APVD |
| | | S | | ECR-13-000998 | 11FEB2013 | PK | HS |



1 TIN PL .000150 MIN THK
 MIL-T 10727

2 WIRE RANGE: 950 - 1125 MCM

3 PART NO: 324471; .665 LB.
 PART NO: 1-324471-0; .665 LB.
 PART NO: 2-324471-1; .743 LB.

4 PREPRODUCTION - FASR REQ.

5 .045 MAX BURR ALLOWED INSIDE THE WIRE
 BARREL ID IN AREA OF SIGHT HOLE.

| | | | | | |
|------|------|------|---------|-----------|--------------|
| 1.46 | 1.83 | 3.64 | △ | COPPER | △ 2-324471-1 |
| 1.46 | 1.46 | 3.27 | CLEANED | ASTM-B-75 | 1-324471-0 |
| | | | △ | ANNEALED | 324471 |
| "C" | "B" | "A" | FINISH | MATERIAL | PART No |

THIS DRAWING IS A CONTROLLED DOCUMENT.

| | | |
|------------------|-----------------------|-----------|
| DWN | DK SCHRUM | 4/24/89 |
| CHK | MS FEHER | 4/24/89 |
| APVD | WJ VOCKROTH | 11/8/89 |
| PRODUCT SPEC | NAME | |
| APPLICATION SPEC | SPLICE, BUTT, AMPOWER | |
| WEIGHT | WIRE SIZE: 1000 MCM | |
| FINISH | SIZE | CAGE CODE |
| SEE TABLE | A3 | 00779 |
| SEE TABLE | DRAWING NO | |
| | C=324471 | |
| CUSTOMER DRAWING | RESTRICTED TO | |
| | SCALE | 1:1 |
| | SHEET | 1 OF 1 |
| | REV | S |