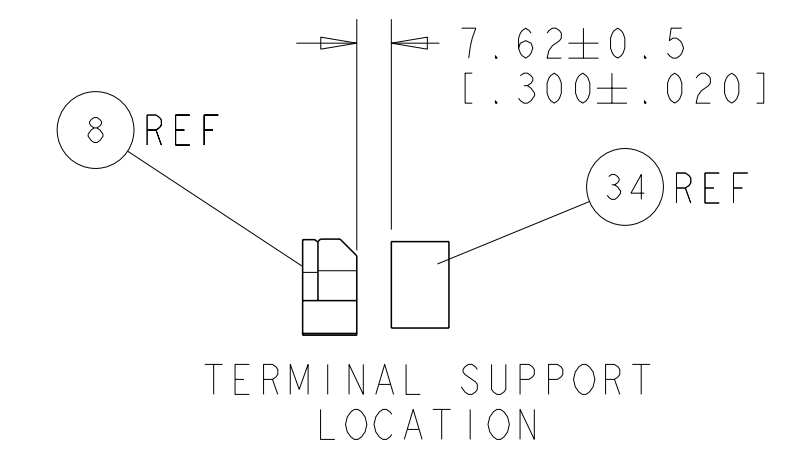
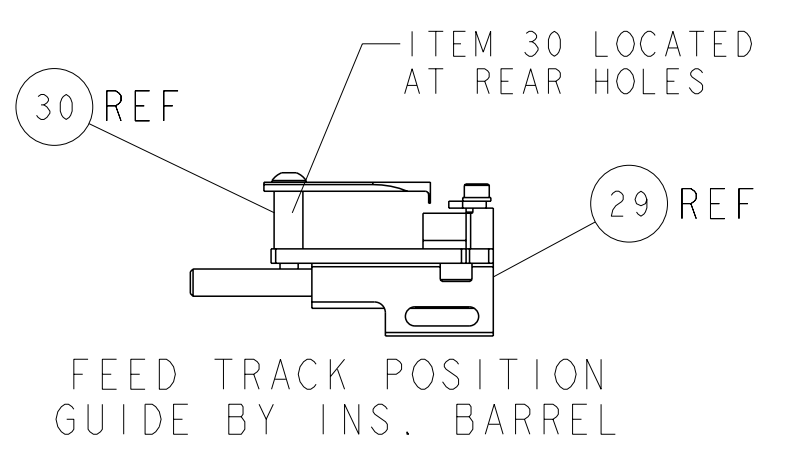
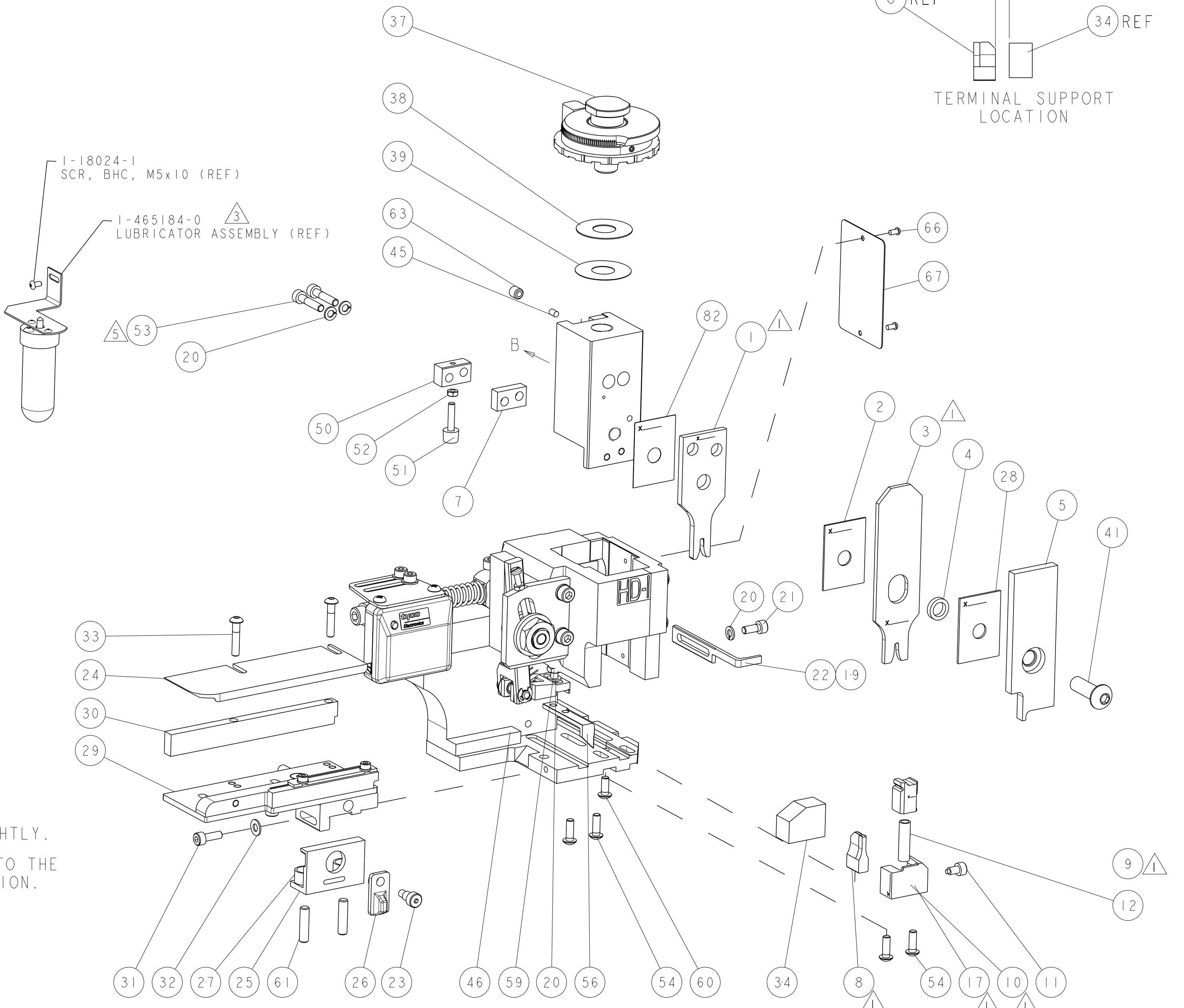
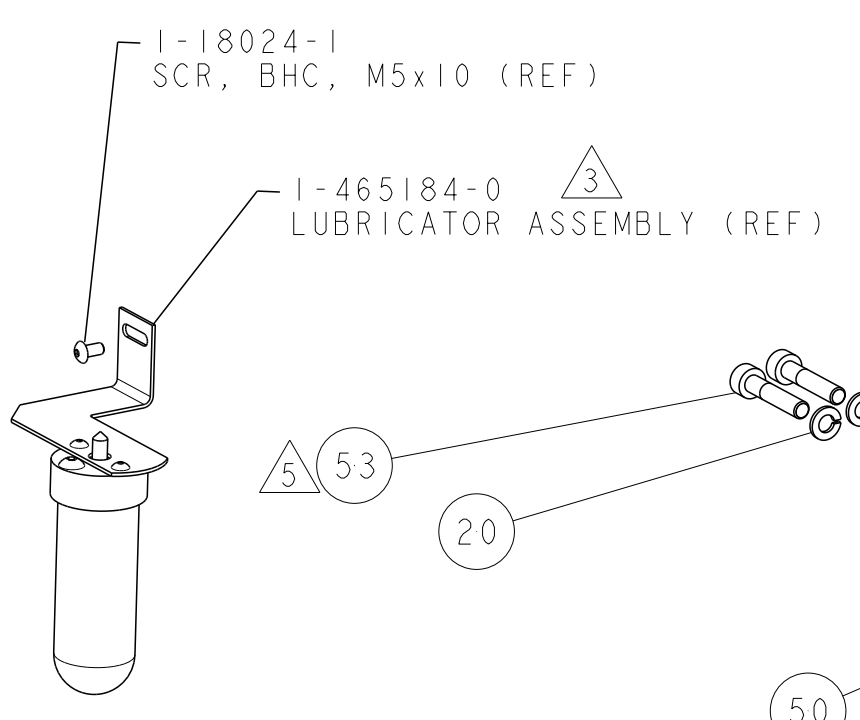


PART NUMBER	REV	TERMINATOR	FEED TYPE	DESCRIPTION
1530075-1	B	LEADMAKER	MECH POST FEED	CUTS CARRIER
1530075-2	B	BENCH	MECH PRE FEED	CUTS CARRIER
1530075-6	B	LEADMAKER	MECH POST FEED	CONTINUOUS CARRIER
7-1530075-1	B	LEADMAKER	MECH POST FEED	-1 AND SPARE PARTS
7-1530075-2	B	BENCH	MECH PRE FEED	-2 AND SPARE PARTS
7-1530075-6	B	LEADMAKER	MECH POST FEED	-6 AND SPARE PARTS
7-1530075-7	B	-	-	SPARE PARTS KIT

CRIMP DATA	MOLEX TERMINAL	NONE CRIMP SPECS
TERMINAL NAME: TERMINAL		
CRIMP	SIZE	TYPE
WIRE	2.03 (.080 IN)	F
INSUL	2.54 (.100 IN)	OV
WIRE STRIP LENGTH		RANGE
2.00-3.00 (.078-.118 IN)		18 AWG
APPL INSTRUCTIONS		
408-8322 & 408-8490		
TERMINAL APPL SPEC	NONE	FEED
-	-	9.65 [.380 IN]
TERMINALS APPLIED		
1949887	MLX 33088-0009	-
-	-	-
-	-	-
-	-	-
-	-	-
WIRE SIZE	CRIMP HEIGHT	REF SETTING
18 AWG	1.27 ±0.05 [.050 ±.002 IN]	C-7

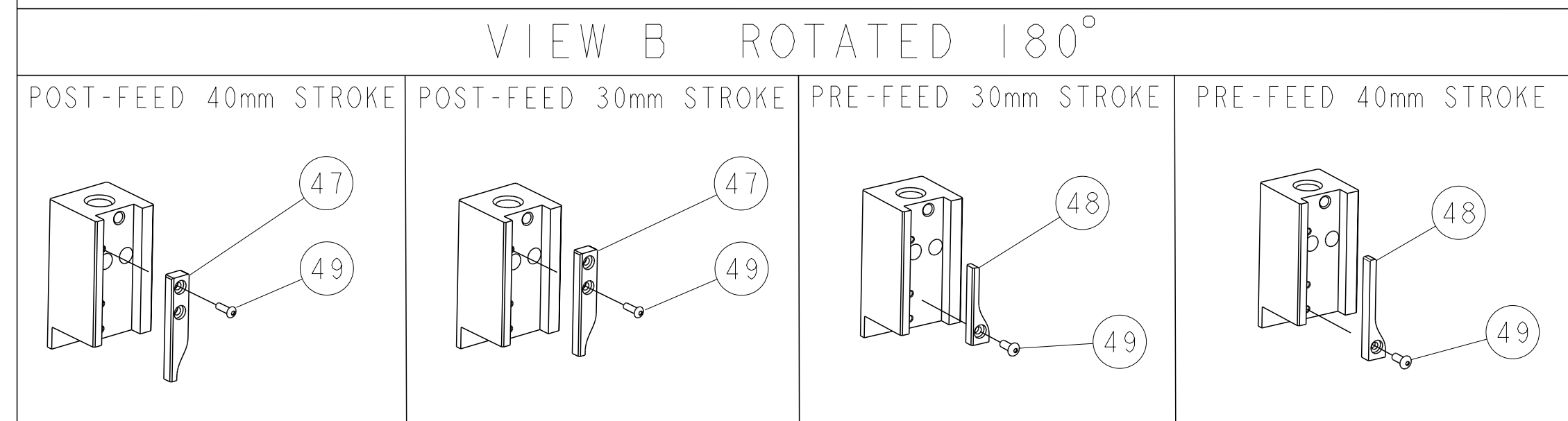


LOC	DIST	REV	DATE	BY	APPD
A	66	RELEASED	24MAR2009	DWW	GB
B		ECR-11-002739	08FEB2011	MY	GB

REV	DATE	DESCRIPTION	ITEM NO
-	-	-	73
-	-	-	72
-	-	-	71
-	-	-	70
-	-	-	69
-	-	-	68
-	-	-	67
-	-	-	66
-	-	-	65
-	-	-	64
-	-	-	63
-	-	-	62
-	-	-	61
-	-	-	60
-	-	-	59
-	-	-	58
-	-	-	57
-	-	-	56
-	-	-	55
-	-	-	54
-	-	-	53
-	-	-	52
-	-	-	51
-	-	-	50
-	-	-	49
-	-	-	48
-	-	-	47
-	-	-	46
-	-	-	45
-	-	-	44
-	-	-	43
-	-	-	42
-	-	-	41
-	-	-	40
-	-	-	39
-	-	-	38
-	-	-	37
-	-	-	36
-	-	-	35
-	-	-	34
-	-	-	33
-	-	-	32
-	-	-	31
-	-	-	30
-	-	-	29
-	-	-	28
-	-	-	27
-	-	-	26
-	-	-	25
-	-	-	24
-	-	-	23
-	-	-	22
-	-	-	21
-	-	-	20
-	-	-	19
-	-	-	18
-	-	-	17
-	-	-	16
-	-	-	15
-	-	-	14
-	-	-	13
-	-	-	12
-	-	-	11
-	-	-	10
-	-	-	9
-	-	-	8
-	-	-	7
-	-	-	6
-	-	-	5
-	-	-	4
-	-	-	3
-	-	-	2
-	-	-	1
-	-	-	0

- RECOMMENDED SPARE PARTS.
- GREASE RAM, CAM, CAM FOLLOWER AND FEED ROD LIGHTLY.
- CERTAIN TERMINALS REQUIRE LUBRICATION. REFER TO THE APPLICATOR INSTRUCTION SHEET FOR MORE INFORMATION.
- LUBRICATE DAILY PER THE APPLICATOR INSTRUCTION SHEET SUPPLIED WITH THE APPLICATOR.
- CUT TO LENGTH AT ASSEMBLY.

*** WARNING**
ON INSTALLATION, SET WIRE DISC TO LARGEST WIRE SIZE SETTING. USE OF SETTINGS BELOW MIN. REQUIRED CRIMP HEIGHT SETTING WILL CAUSE DAMAGE TO CRIMP TOOLING.



REV	DATE	DESCRIPTION	ITEM NO
-	-	-	84
-	-	-	83
-	-	-	82
-	-	-	81
-	-	-	80
-	-	-	79
-	-	-	78
-	-	-	77
-	-	-	76
-	-	-	75
-	-	-	74
-	-	-	73
-	-	-	72
-	-	-	71
-	-	-	70
-	-	-	69
-	-	-	68
-	-	-	67
-	-	-	66
-	-	-	65
-	-	-	64
-	-	-	63
-	-	-	62
-	-	-	61
-	-	-	60
-	-	-	59
-	-	-	58
-	-	-	57
-	-	-	56
-	-	-	55
-	-	-	54
-	-	-	53
-	-	-	52
-	-	-	51
-	-	-	50
-	-	-	49
-	-	-	48
-	-	-	47
-	-	-	46
-	-	-	45
-	-	-	44
-	-	-	43
-	-	-	42
-	-	-	41
-	-	-	40
-	-	-	39
-	-	-	38
-	-	-	37
-	-	-	36
-	-	-	35
-	-	-	34
-	-	-	33
-	-	-	32
-	-	-	31
-	-	-	30
-	-	-	29
-	-	-	28
-	-	-	27
-	-	-	26
-	-	-	25
-	-	-	24
-	-	-	23
-	-	-	22
-	-	-	21
-	-	-	20
-	-	-	19
-	-	-	18
-	-	-	17
-	-	-	16
-	-	-	15
-	-	-	14
-	-	-	13
-	-	-	12
-	-	-	11
-	-	-	10
-	-	-	9
-	-	-	8
-	-	-	7
-	-	-	6
-	-	-	5
-	-	-	4
-	-	-	3
-	-	-	2
-	-	-	1
-	-	-	0

THIS IS A PRELIMINARY DRAWING. IT IS SUBJECT TO CHANGE WITHOUT NOTICE. THE USER SHALL BE RESPONSIBLE FOR VERIFYING THE DIMENSIONS AND TOLERANCES OF THE PARTS BEFORE USE.

TYCO ELECTRONICS
Tyco Electronics
Harrisburg, PA 17105-3608

FINE ADJUST SIDE FEED HDI APPLICATOR

DATE: 9FEB2009
BY: G. BALLEW
APPD: J. ELBIN

SIZE: A | CAGE CODE: 00779 | DRAWING NO: 1530075 | SHEET: 1 OF 1