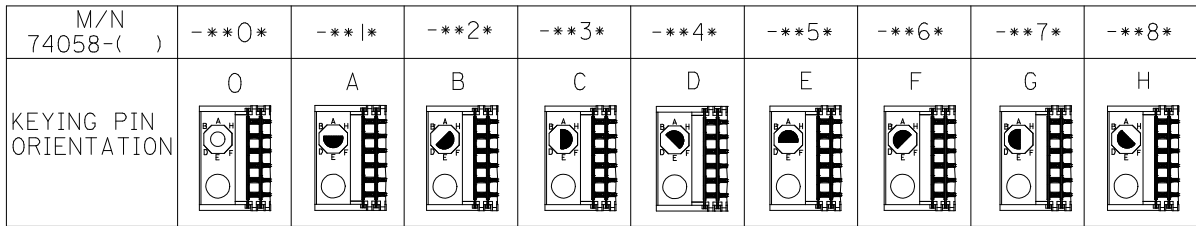


**NOTES:**

1. MATERIALS:  
HOUSING - LIQUID CRYSTAL POLYMER (LCP),  
GLASS-FILLED, UL 94V-0, COLOR: BLACK  
SIGNAL PIN & SHIELD - COPPER ALLOY
2. FINISHES:  
CONTACT AREA: SELECTIVE GOLD (Au)  
PCB TAILS: SELECTIVE MATTE TIN (Sn)  
NICKEL (Ni) OVERALL.
3. THIS PART CONFORMS TO MOLEX PRODUCT SPECIFICATION PS-74031-999
4. FOR MIXED CONTACT LENGTHS CONSULT MOLEX FOR AVAILABILITY
5. FOR SPECIFIC MATERIAL NUMBERS & MATING INFORMATION REFER TO SHEET 2
6. PACKAGE PER PK-74058-003
7. MARK PART WITH PART NUMBER & DATE CODE APPROXIMATELY WHERE SHOWN
8. MAPS (MOLEX ADVANCED PLATING SYSTEM).

THE PRIMARY CARTON WITH A LABEL STATING "ELV AND RoHS COMPLAINT" IS LEAD FREE. CARTONS WITHOUT THIS LABEL MAY CONTAIN LEAD.

<b>LEAD FREE CONVERSION</b> EC NO: UCP2013-0687 DRAWINGS: 2012/08/21 CHKD: MWOLF 2012/11/26 APPR: SMILLER 2012/12/14 REV: M	QUALITY SYMBOLS ▽=0 ▽=0 ▽=0	GENERAL TOLERANCES (UNLESS SPECIFIED) <table border="1"> <thead> <tr> <th></th> <th>mm</th> <th>INCH</th> </tr> </thead> <tbody> <tr> <td>4 PLACES</td> <td>± .005</td> <td>± .0004</td> </tr> <tr> <td>3 PLACES</td> <td>± .008</td> <td>± .0003</td> </tr> <tr> <td>2 PLACES</td> <td>± .015</td> <td>± .0002</td> </tr> <tr> <td>1 PLACE</td> <td>± .030</td> <td>± .0012</td> </tr> <tr> <td>0 PLACE</td> <td>± .050</td> <td>± .0020</td> </tr> </tbody> </table>		mm	INCH	4 PLACES	± .005	± .0004	3 PLACES	± .008	± .0003	2 PLACES	± .015	± .0002	1 PLACE	± .030	± .0012	0 PLACE	± .050	± .0020	DIMENSION STYLE <b>MM ONLY</b> DRAWN BY: JMELTON DATE: 2010/05/19 CHECKED BY: SDANNELLEY DATE: 2010/05/19 APPROVED BY: SMILLER DATE: 2010/07/14	SCALE: 2.5:1 DESIGN UNITS: METRIC THIRD ANGLE PROJECTION	TITLE: <b>VHDM 6 ROW          SIGNAL END BACKPLANE          SALES ASSEMBLY</b> <b>molex</b>	MATERIAL NO. <b>SEE SHEET 2</b>	DOCUMENT NO. <b>SD-74058-002</b>	SHEET NO. <b>1 OF 2</b>
		mm	INCH																							
	4 PLACES	± .005	± .0004																							
	3 PLACES	± .008	± .0003																							
2 PLACES	± .015	± .0002																								
1 PLACE	± .030	± .0012																								
0 PLACE	± .050	± .0020																								
ANGLAR ±1/2° DRAFT WHERE APPLICABLE MUST REMAIN WITHIN DIMENSIONS		SIZE: C		THIS DRAWING CONTAINS INFORMATION THAT IS PROPRIETARY TO MOLEX INCORPORATED AND SHOULD NOT BE USED WITHOUT WRITTEN PERMISSION																						



74058 \* \* \* \*

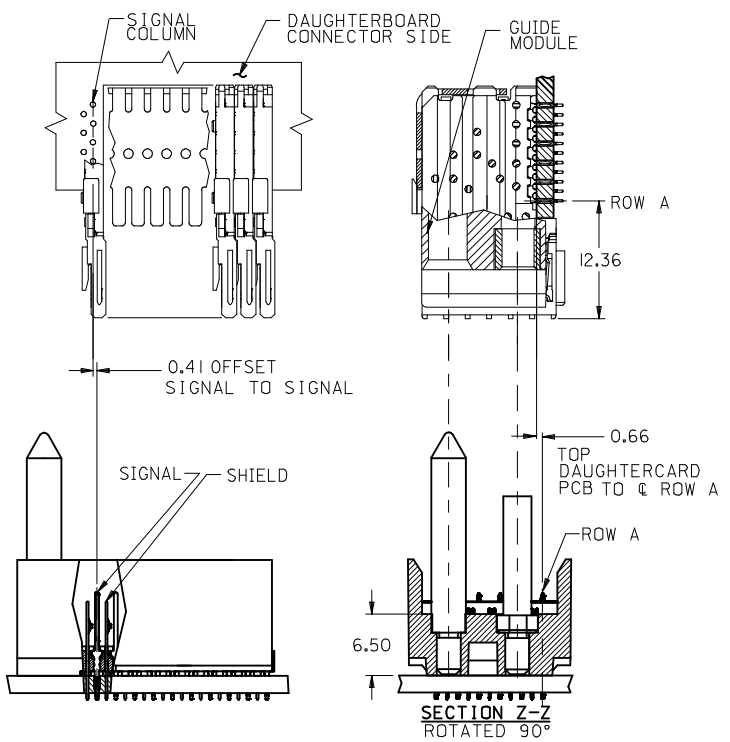
CONTACT LOAD (PIN LENGTH)

1	=	4.75
2	=	4.25
3	=	3.75
4	=	3.25
5	=	2.75
6	=	2.25
7	=	1.75
8	=	1.25
9	=	0.75
10	=	0.25

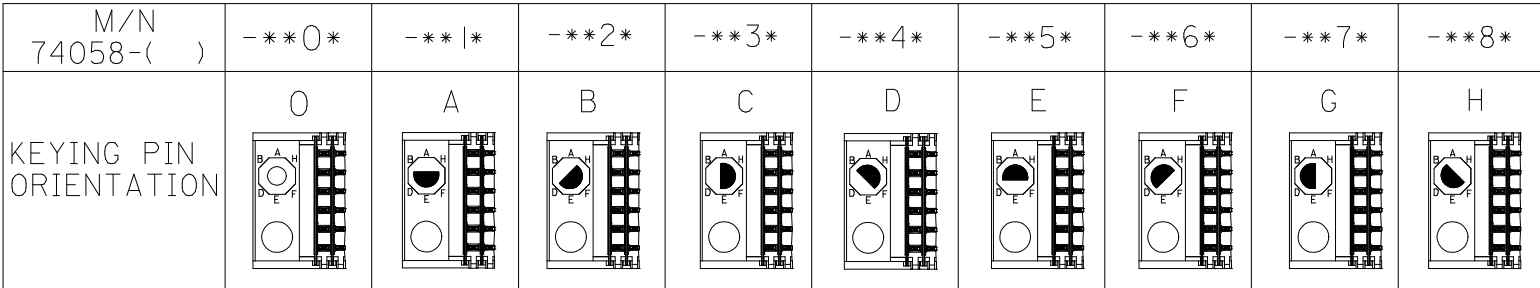
NUMBER OF COLUMNS/PLATING

10	=	10 COLUMN MATTE TIN (FORMERLY TIN/LEAD)
25	=	25 COLUMN MATTE TIN (FORMERLY TIN/LEAD)
60	=	10 COLUMN MATTE TIN (MAPS)
75	=	25 COLUMN MATTE TIN (MAPS)
90	=	10 COLUMN MATTE TIN
85	=	25 COLUMN MATTE TIN

PART NUMBER	COLUMN	NUMBER OF SIGNAL PIN	NUMBER OF SHIELD	A	B	M	GOLD THICKNESS MICROMETER	TIN THICKNESS MICROMETER
74058-60*1							0.25 MAPS	0.76-1.52
74058-x0*1	10	60	10	27.00	18.00	4.75	0.76	
74058-x0*6							1.27	
74058-75*1							0.25 MAPS	
74058-x5*1	25	150	25	57.00	48.00	6.25	0.76	
74058-x5*6							1.27	
74058-60*2							0.25 MAPS	
74058-x0*2	10	60	10	27.00	18.00	4.25	0.76	
74058-x0*7							1.27	
74058-75*2							0.25 MAPS	
74058-x5*2	25	150	25	57.00	48.00	5.15	0.76	
74058-x5*7							1.27	
74058-60*3							0.25 MAPS	
74058-x0*3	10	60	10	27.00	18.00	4.75	0.76	
74058-x0*8							1.27	
74058-75*3							0.25 MAPS	
74058-x5*3	25	150	25	57.00	48.00	6.25	0.76	
74058-x5*8							1.27	
74058-60*4							0.25 MAPS	
74058-x0*4	10	60	10	27.00	18.00	5.15	0.76	
74058-x0*9							1.27	
74058-75*4							0.25 MAPS	
74058-x5*4	25	150	25	57.00	48.00	6.25	0.76	
74058-x5*9							1.27	
74058-x5*9							1.27	



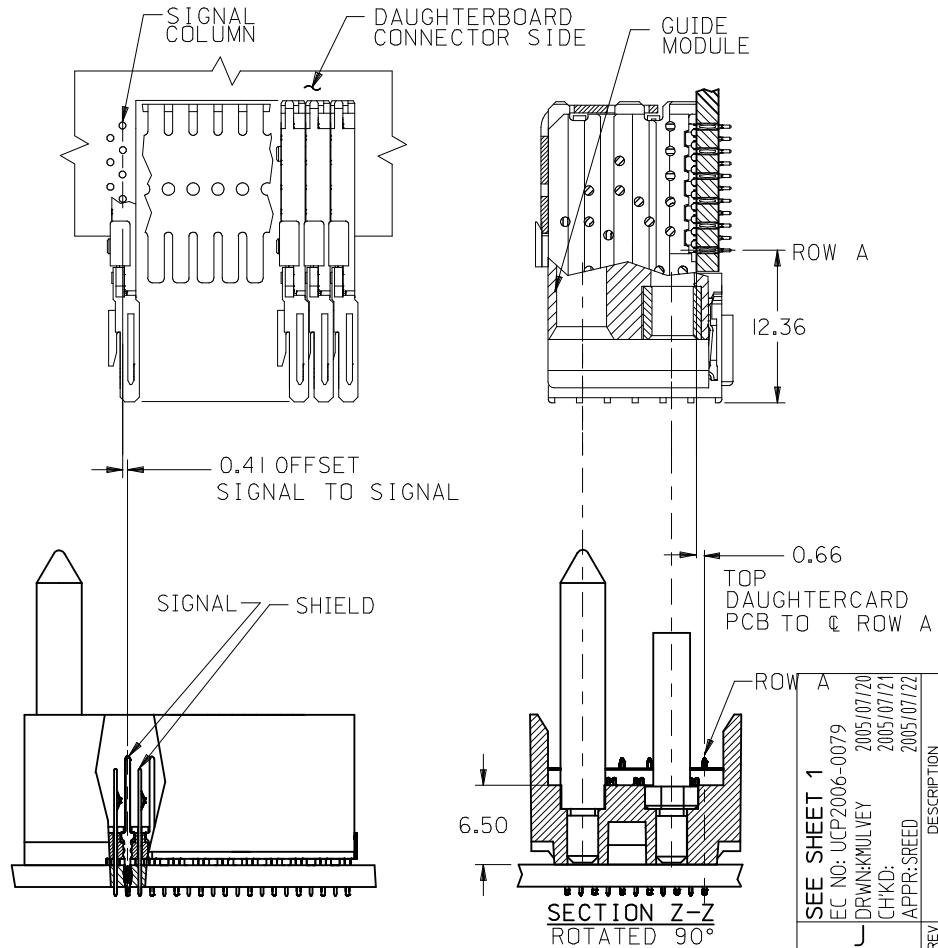
SEE SHEET 1 EC NO: UCP2013-0687 DRWINGS 2012/08/21 CHKD:HWOLFE 2012/11/26 APPR:SMILLER 2012/12/14	QUALITY SYMBOLS	GENERAL TOLERANCES (UNLESS SPECIFIED)	DIMENSION STYLE MM ONLY	SCALE 2.5:1	DESIGN UNITS METRIC	THIRD ANGLE PROJECTION
	▽=0	mm INCH	DRAWN BY DATE JMELTON 2010/05/19	TITLE VHDM 6 ROW SIGNAL END BACKPLANE SALES ASSEMBLY		
	▽=0	4 PLACES ± --- ± ---	CHECKED BY DATE SDANNELLEY 2010/05/19	molex		
	▽=0	3 PLACES ± --- ± ---	APPROVED BY DATE SMILLER 2010/07/14	MATERIAL NO.	DOCUMENT NO.	SHEET NO.
	▽=0	2 PLACES ± --- ± ---	ANGULAR ±1/2°	SEE TABLE	SD-74058-002	2 OF 2
M	REV	DRAFT WHERE APPLICABLE MUST REMAIN WITHIN DIMENSIONS	THIS DRAWING CONTAINS INFORMATION THAT IS PROPRIETARY TO MOLEX INCORPORATED AND SHOULD NOT BE USED WITHOUT WRITTEN PERMISSION			



**74058 \* \* \* \***

NUMBER OF COLUMNS/PLATING  
 10 = 10 COLUMN TIN/LEAD  
 25 = 25 COLUMN TIN/LEAD  
 90 = 10 COLUMN MATTE TIN  
 85 = 25 COLUMN MATTE TIN

CONTACT LOAD (PIN LENGTH)  
 1 & 6 = 4.75  
 2 & 7 = 6.25  
 3 & 8 = 4.25  
 4 & 9 = 5.15



PART NUMBER	COLUMN	NUMBER OF SIGNAL PIN	NUMBER OF SHIELD	A	B	M	Au (um) THICKNESS	Sn (um) THICKNESS
74058-*0*1	10	60	10	27.00	18.00	4.75	0.76	0.76-1.52
74058-*0*6							1.27	
74058-*5*1	25	150	25	57.00	48.00		0.76	
74058-*5*6							1.27	
74058-*0*2	10	60	10	27.00	18.00	6.25	0.76	
74058-*0*7							1.27	
74058-*5*2	25	150	25	57.00	48.00		0.76	
74058-*5*7							1.27	
74058-*0*3	10	60	10	27.00	18.00	4.25	0.76	
74058-*0*8							1.27	
74058-*5*3	25	150	25	57.00	48.00		0.76	
74058-*5*8							1.27	
74058-*0*4	10	60	10	27.00	18.00	5.15	0.76	
74058-*0*9							1.27	
74058-*5*4	25	150	25	57.00	48.00		0.76	
74058-*5*9							1.27	

SEE SHEET 1  
 EC NO: UCP2006-0079  
 DRW:MKMULVEY 2005/07/20  
 CHKD: 2005/07/21  
 APPR: SREED 2005/07/22

QUALITY SYMBOLS  
 ▽=0  
 ▽=0

GENERAL TOLERANCES (UNLESS SPECIFIED)

	mm	INCH
4 PLACES	± .005	± .0004
3 PLACES	± .005	± .0004
2 PLACES	± .005	± .0004
1 PLACE	± .005	± .0004
ANGULAR ±1/2°		

DRAFT WHERE APPLICABLE  
 MUST REMAIN WITHIN DIMENSIONS

DIMENSION STYLE  
**MM ONLY**

DRAWN BY DATE  
 MWANG 1998/11/09

CHECKED BY DATE  
 JLAURX 1998/11/09

APPROVED BY DATE  
 CBIXLER 1998/11/09

MATERIAL NO.

SCALE  
**2.5:1**

DESIGN UNITS  
**METRIC**

THIRD ANGLE PROJECTION

**VHDM 6 ROW  
 SIGNAL END BACKPLANE  
 SALES ASSEMBLY**

**molex MOLEX INCORPORATED**

DOCUMENT NO.  
**SD-74058-002**

SHEET NO.  
**2 OF 2**

THIS DRAWING CONTAINS INFORMATION THAT IS PROPRIETARY TO MOLEX INCORPORATED AND SHOULD NOT BE USED WITHOUT WRITTEN PERMISSION