

MAX17536EVKITB# Evaluation Kit

Evaluates: MAX17536 5V Output-Voltage Application

General Description

The MAX17536 5V output evaluation kit (EV kit) provides a proven design to evaluate this high-voltage, high-efficiency, synchronous step-down DC-DC converter. The EV kit is preset for a 5V output at load currents up to 4A and features a 450kHz switching frequency for optimum efficiency and component size. The EV kit features adjustable input, undervoltage lockout, adjustable soft-start, open-drain $\overline{\text{RESET}}$ signal, and external frequency synchronization.

Features

- Operates from a 6.5V to 60V Input Supply
- 5V Output Voltage
- Up to 4A Output Current
- 450kHz Switching Frequency
- Enable/UVLO Input, Resistor-Programmable UVLO Threshold
- Adjustable Soft-Start Time
- MODE Pin to Select Among PWM, PFM, or DCM Modes
- Open-Drain $\overline{\text{RESET}}$ Output
- External Frequency Synchronization
- Overcurrent and Overtemperature Protection
- Proven PCB Layout
- Fully Assembled and Tested

[Ordering Information](#) appears at end of data sheet.

Quick Start

Recommended Equipment

- MAX17536EVKITB#
- 6.5V to 60V, 10A DC input power supply
- Load capable of sinking 4A
- Digital voltmeter (DVM)

Procedure

The EV kit is fully assembled and tested. Follow the steps below to verify board operation. **Caution: Do not turn on power supply until all connections are completed.**

- 1) Set the power supply at a voltage between 6V and 60V. Disable the power supply.
- 2) Connect the positive terminal of the power supply to the VIN PCB pad and the negative terminal to the nearest PGND PCB pad. Connect the positive terminal of the 4A load to the VOUT PCB pad and the negative terminal to the nearest PGND PCB pad.
- 3) Connect the DVM across the VOUT PCB pad and the nearest PGND PCB pad.
- 4) Verify that shunt is installed across pins 1-2 on jumper JU1 (see [Table 1](#) for details).
- 5) Select the shunt position on JU2 according to the intended mode of operation (see [Table 2](#) for details).
- 6) Turn on the DC power supply.
- 7) Enable the load.
- 8) Verify that the DVM displays 5V.

Detailed Description

The MAX17536 EV kit provides a proven design to evaluate the high-voltage, high-efficiency, synchronous step-down DC-DC converter. The EV kit is preset for a 5V output from a 6.5V to 60V input at load currents up to 4A and features a 450kHz switching frequency for optimum efficiency and component size.

The EV kit includes an EN/UVLO PCB pad and JU1 to enable the output at a desired input voltage. The SYNC PCB pad allows an external clock to synchronize the device. JU2 allows the selection of a particular mode of operation based on light-load performance requirements. An additional $\overline{\text{RESET}}$ PCB pad is available for monitoring when the converter output is in regulation.

Soft-Start Input (SS)

The device utilizes an adjustable soft-start function to limit inrush current during startup. The soft-start time is adjusted by the value of the external capacitor from SS to GND (C7). The selected output capacitance (C_{SEL}) and the output voltage (V_{OUT}) determine the minimum value of C7, as shown by the following equation:

$$C7 \geq 28 \times 10^{-6} \times C_{\text{SEL}} \times V_{\text{OUT}}$$

The soft-start time (t_{SS}) is related to C7 by the following equation:

$$t_{\text{SS}} = C7 / (5.55 \times 10^{-6})$$

For example, to program a 2.2ms soft-start time, C7 should be 12nF.

Regulator Enable/Undervoltage-Lockout Level (EN/UVLO)

The device offers an adjustable-input, undervoltage-lockout level. For normal operation, a shunt should be installed across pins 1-2 on JU1. To disable the output, install a shunt across pins 2-3 on JU1 and the EN/UVLO pin is pulled to GND. See [Table 1](#) for JU1 settings.

Set the voltage at which the device turns on with the resistive voltage-divider R1/R2 connected from V_{IN} to SGND. Connect the center node of the divider to EN/UVLO. Choose R1 to be 3.32M Ω and then calculate R2 as follows:

$$R2 = \frac{R1 \times 1.215}{V_{\text{INU}} - 1.215}$$

where V_{INU} is the voltage at which the device is required to turn on.

Mode/SYNC Selection (MODE)

The device's MODE pin can be used to select among the PWM, PFM, or DCM modes of operation. The logic state of the MODE pin is latched when the V_{CC} and EN/UVLO voltages exceed the respective UVLO rising thresholds and all internal voltages are ready to allow LX switching. State changes on the MODE pin are ignored during normal operation. Refer to the MAX17536IC data sheet for more information on the PWM, PFM, and DCM modes of operation.

[Table 2](#) lists JU2 jumper settings that can be used to configure the desired mode of operation. The internal oscillator of the device can be synchronized to an external clock signal on the SYNC pin. The external synchronization clock frequency must be between $1.1f_{\text{SW}}$ and $1.4f_{\text{SW}}$, where f_{SW} is the frequency of operation set by R5. The minimum external clock high pulse width should be greater than 50ns, while the minimum external clock low pulse width should be greater than 160ns.

Table 1. Regulator Enable (EN/UVLO) Description (JU1)

SHUNT POSITION	EN/UVLO PIN	MAX17536_OUTPUT
1-2*	Connected to VIN	Enabled
Not installed	Connected to the center node of resistor-divider R1 and R2	Enabled, UVLO level set through the R1 and R2 resistors
2-3	Connected to SGND	Disabled

*Default position.

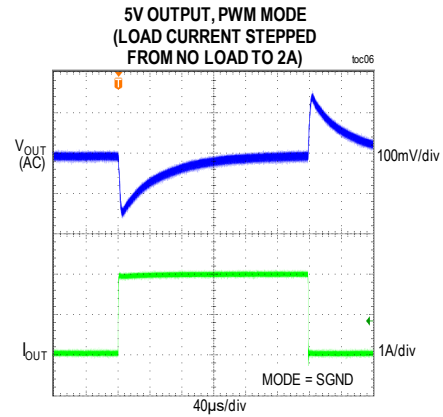
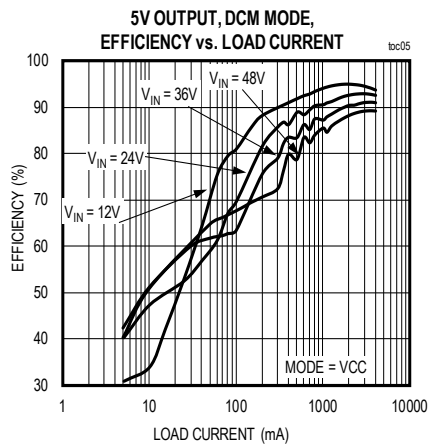
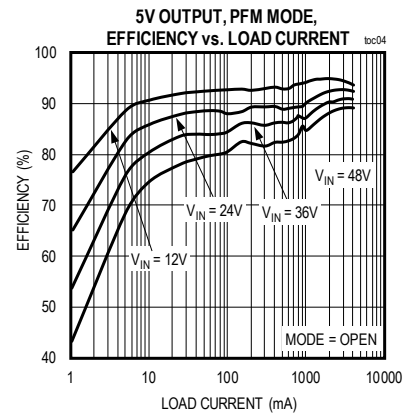
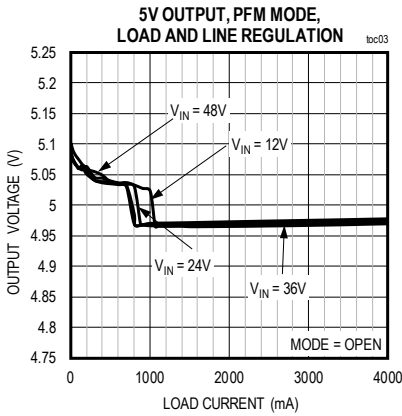
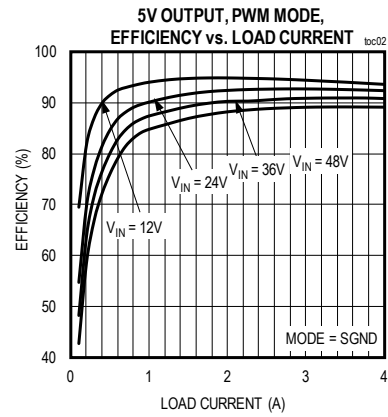
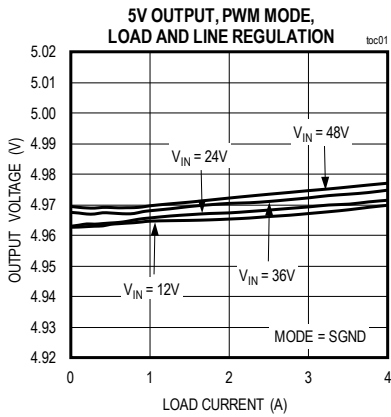
Table 2. MODE Description (JU2)

SHUNT POSITION	MODE PIN	MAX17536_MODE
Not installed*	Unconnected	PFM mode of operation
1-2	Connected to SGND	PWM mode of operation
2-3	Connected to VCC	DCM mode of operation

*Default position.

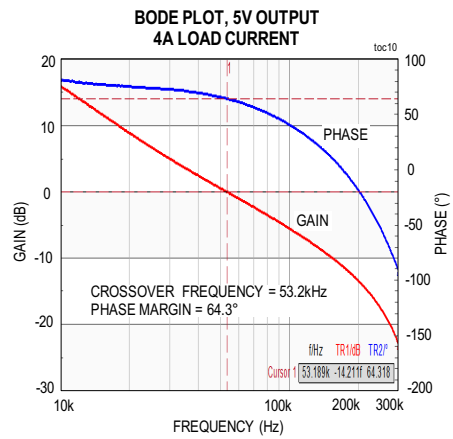
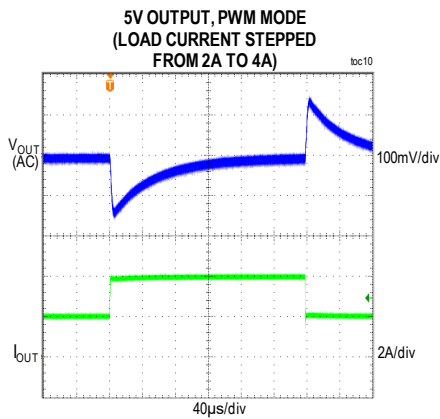
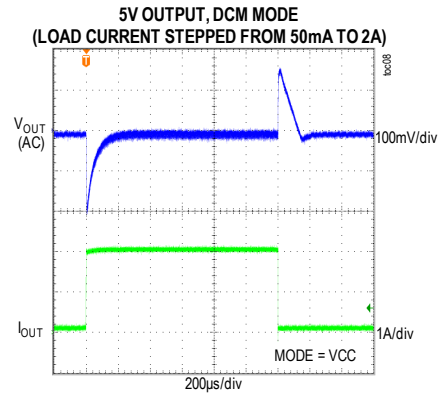
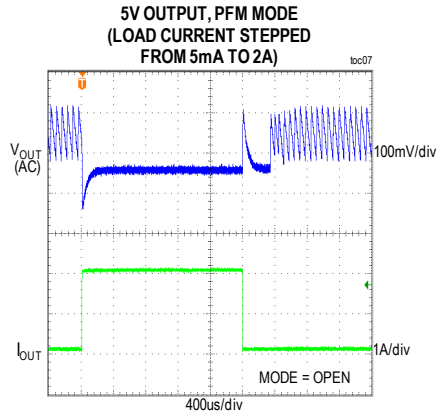
EV Kit Performance Report

(Input voltage = 24V, unless otherwise noted.)



EV Kit Performance Report (continued)

(Input voltage = 24V, unless otherwise noted.)



MAX17536EVKITB# Evaluation Kit

Evaluates: MAX17536
5V Output-Voltage Application

Component Suppliers

SUPPLIER	WEBSITE
Coilcraft, Inc.	www.coilcraft.com
TDK Corp.	www.tdk.com
Murata Americas	www.murata.com
Panasonic Corp.	www.panasonic.com
Vishay	www.vishay.com

Note: Indicate that you are using the MAX17536 when contacting these component suppliers.

Ordering Information

PART	TYPE
MAX17536EVKITB#	EV Kit

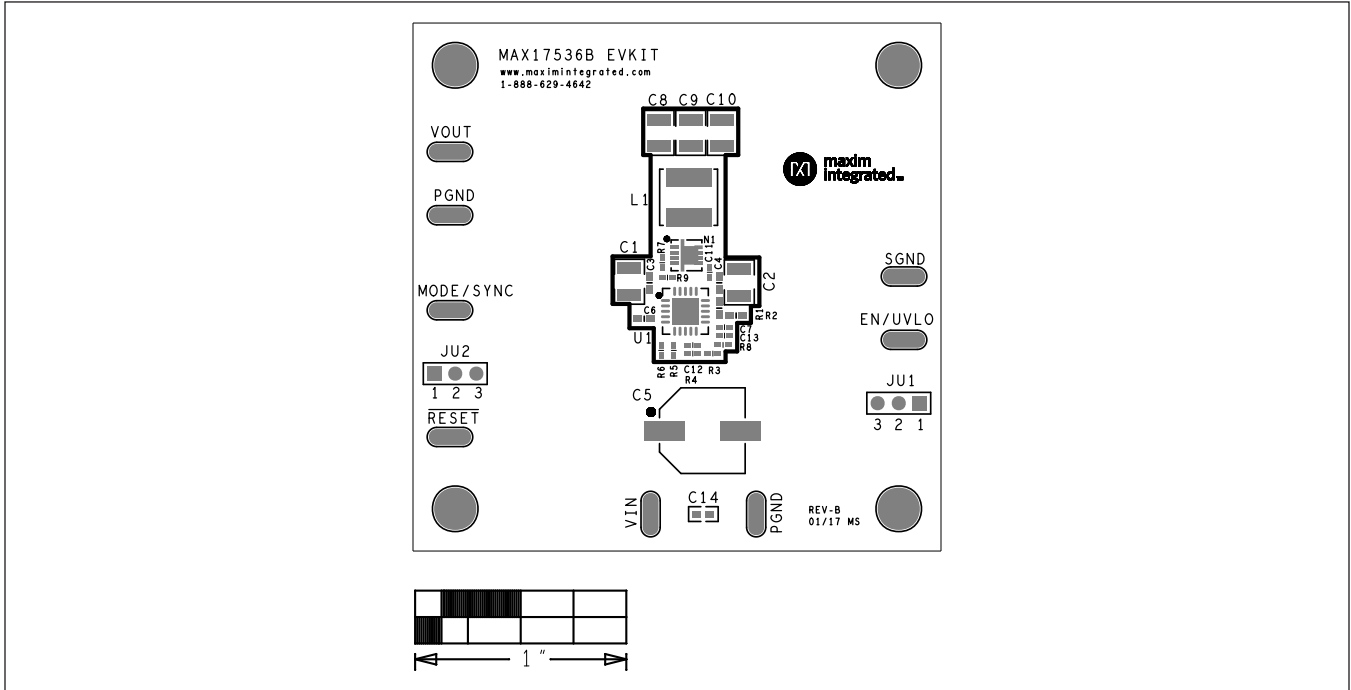
#Denotes RoHS compliant.

MAX17536 5V Output EV Kit Bill of Materials

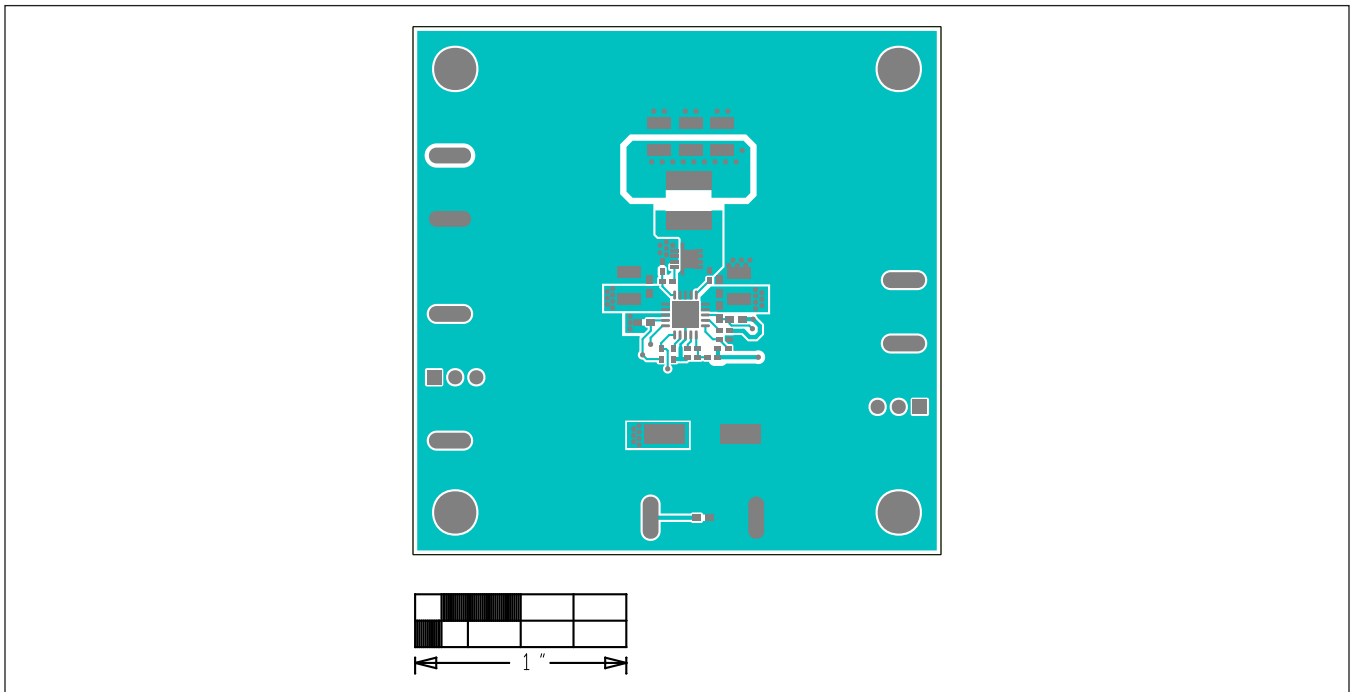
Serial No.	Description	Quantity	Designator	Part Number
1	2.2µF ±10%, 100V X7R ceramic capacitor (1210)	2	C1, C2	MURATA GRM32ER72A225KA35
2	0.1µF ±10%, 100V X7R ceramic capacitor (0603)	3	C3, C4, C13	MURATA GRM188R72A104KA35
3	47µF 80V aluminum electrolytic (D=10mm)	1	C5	PANASONIC EEEFK1K470P
4	2.2µF ±10%, 10V X7R ceramic capacitor (0603)	1	C6	MURATA GRM188R71A225K
5	22000pF ±10%, 50V X7R ceramic capacitor (0402)	1	C7	MURATA GRM155R71H223K
6	47µF ±10%, 10V X7R ceramic capacitor (1210)	1	C8	MURATA GRM32ER71A476K
7	22µF ±10%, 10V X7R ceramic capacitor (1210)	1	C9, C10	MURATA GRM32ER71A226K
8	0.1µF ±10%, 50V X7R ceramic capacitor (0402)	1	C11, C13	MURATA GRM155R71H104KE14
11	3-pin header (36-pin header 0.1" centers)	2	JU1, JU2	Sullins: PTC36SAAN
12	4.7µH Inductor (6.36mm x 6.56mm x 6.1mm)	1	L1	Coilcraft XAL6060-472
13	MOSFET (80V, 30A)	1	N1	VISHAY SILICONIX: SIS468DN-T1-GE3
14	3.32M ohm ±1%, resistor (0603)	1	R1	
15	604k ohm ±1%, resistor (0603)	1	R2	
16	196k ohm ±1%, resistor (0402)	1	R3	
17	43.2k ohm ±1%, resistor (0402)	1	R4	
18	Not installed, OPEN (0402)	0	R5	
19	10k ohm ±1%, resistor (0402)	1	R6	
20	Not installed, OPEN (0402)	0	R7	
21	4.7 ohm ±1%, resistor (0402)	1	R8, R9	
22	Buck Converter MAX17536ATP+	1	U1	MAX17536ATP+
23	Shunt	2	See Jumper Table	SULLINS STC02SYAN

JUMPER TABLE	
JUMPER	SHUNT POSITION
JU1	1-2
JU2	1

MAX17536 5V Output EV Kit PCB Layout

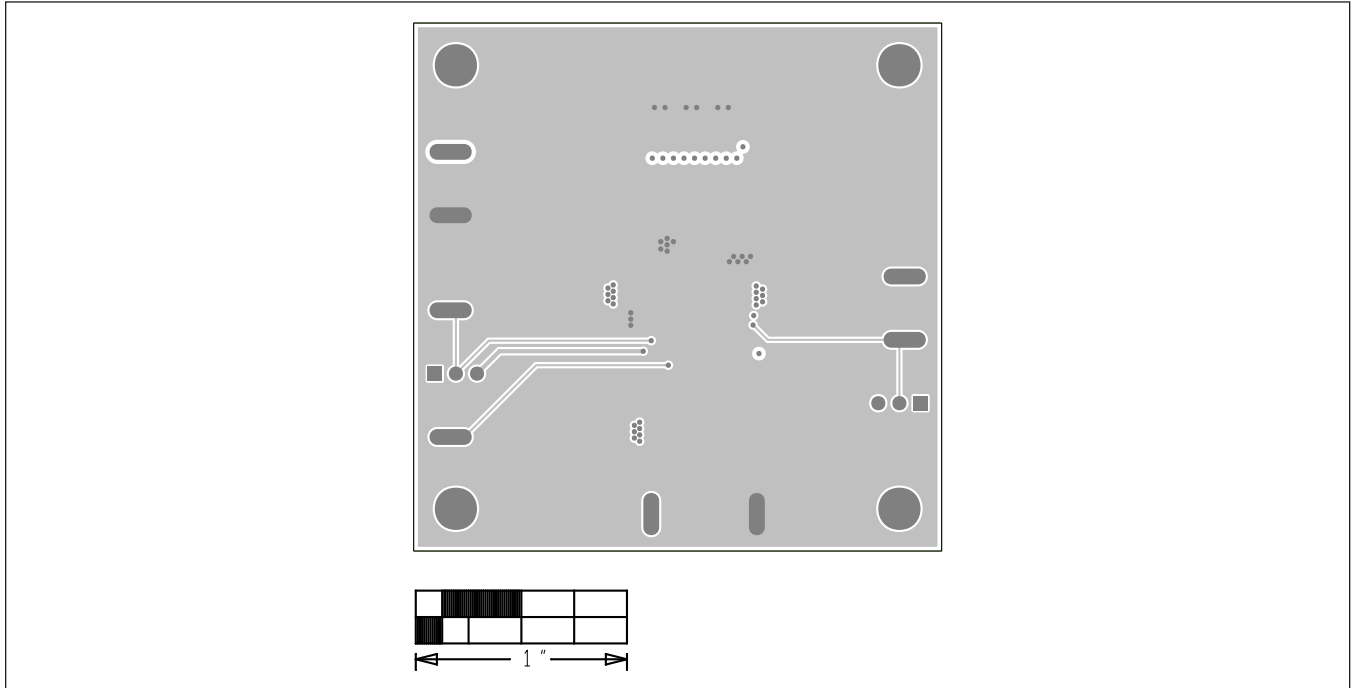


MAX17536 5V Output EV Kit PCB Layout—Top Silkscreen

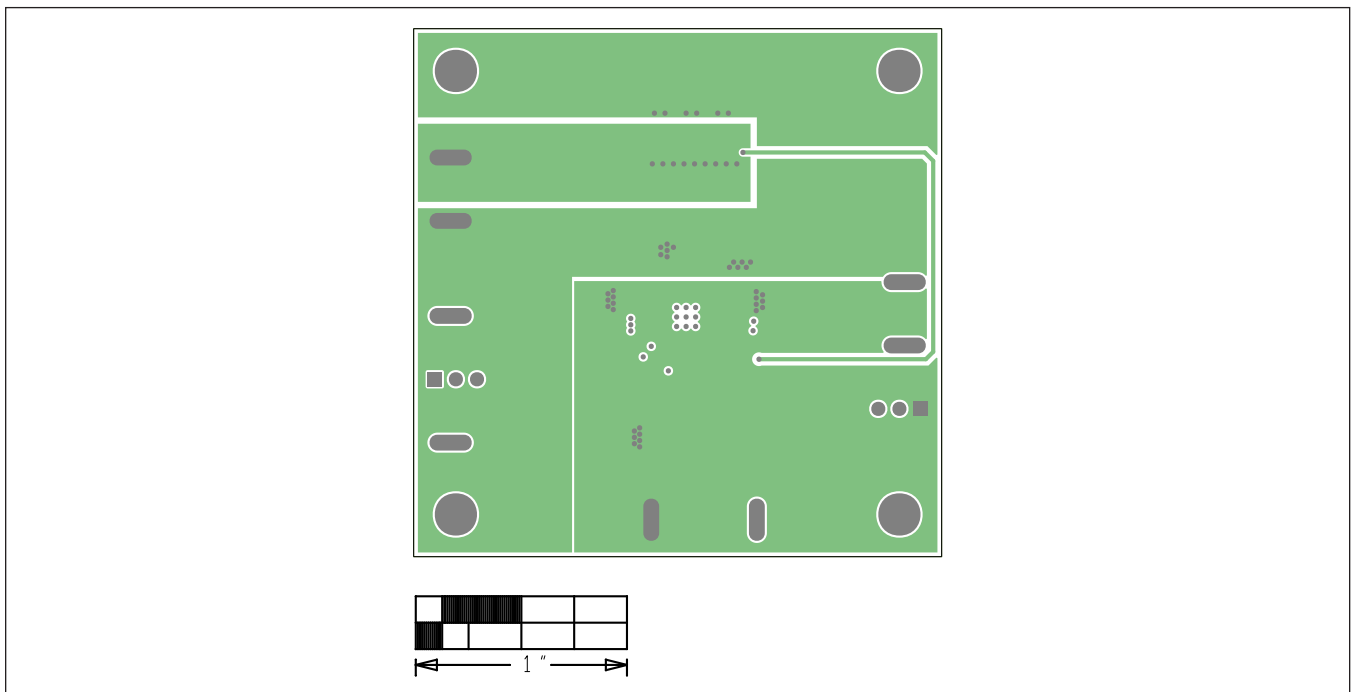


MAX17536 5V Output EV Kit PCB Layout—Top Layer

MAX17536 5V Output EV Kit PCB Layout (continued)

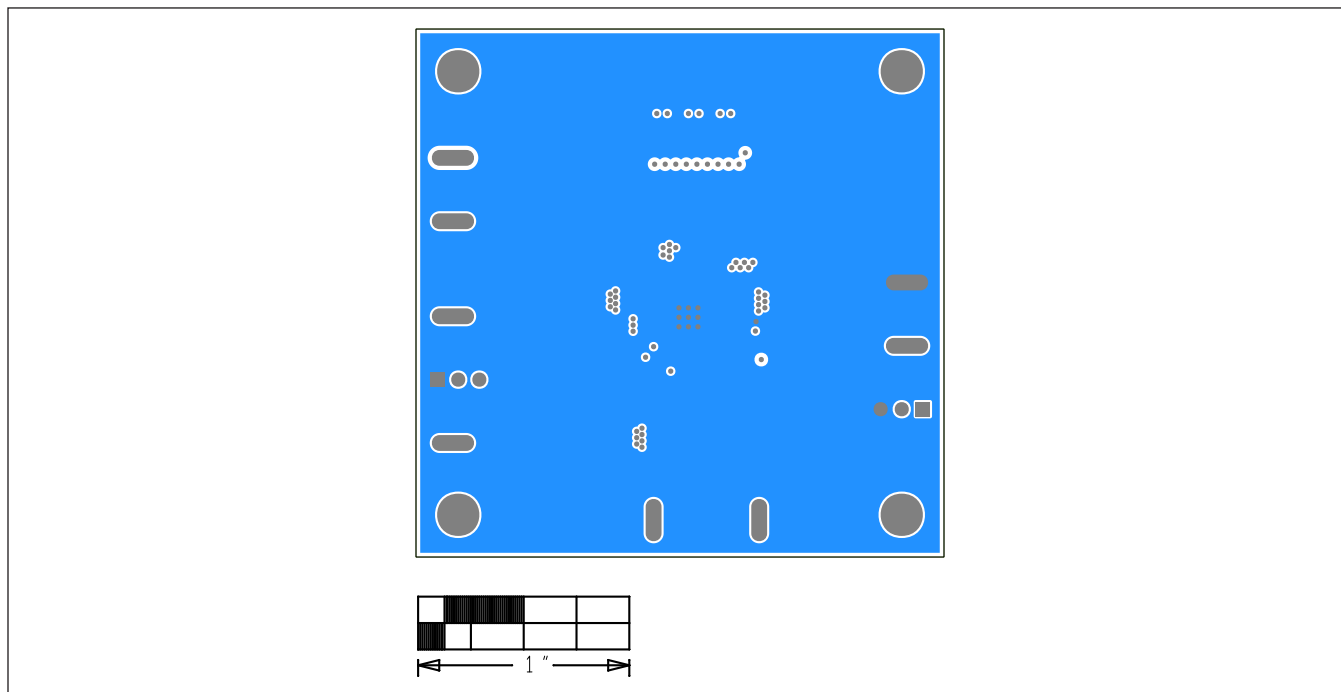


MAX17536 5V Output EV Kit PCB Layout—Layer 2 Ground



MAX17536 5V Output EV Kit PCB Layout—Layer 3 Power

MAX17536 5V Output EV Kit PCB Layout (continued)



MAX17536 5V Output EV Kit PCB Layout—Bottom Layer

Revision History

REVISION NUMBER	REVISION DATE	DESCRIPTION	PAGES CHANGED
0	6/15	Initial release	—
1	8/17	Updated <i>Quick Start</i> , <i>Detailed Description</i> , and <i>Soft-Start Input (SS)</i> section. Updated Table 2 and <i>Component Suppliers</i> table. Replaced <i>Bill of Materials</i> , <i>Schematic</i> , and <i>PCB Layout</i> diagrams.	1–2, 5–9
2	4/18	Updated the title, <i>Quick Start</i> section, Table 2, and Jumper table. Replaced TOC10 and numbered TOC01-TOC09.	1–10

For pricing, delivery, and ordering information, please contact Maxim Direct at 1-888-629-4642, or visit Maxim Integrated's website at www.maximintegrated.com.

Maxim Integrated cannot assume responsibility for use of any circuitry other than circuitry entirely embodied in a Maxim Integrated product. No circuit patent licenses are implied. Maxim Integrated reserves the right to change the circuitry and specifications without notice at any time.