

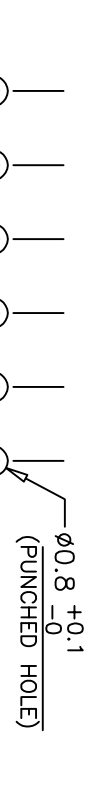
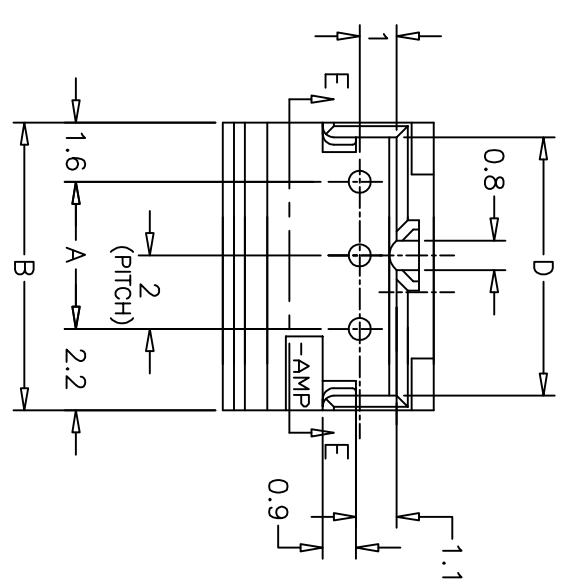
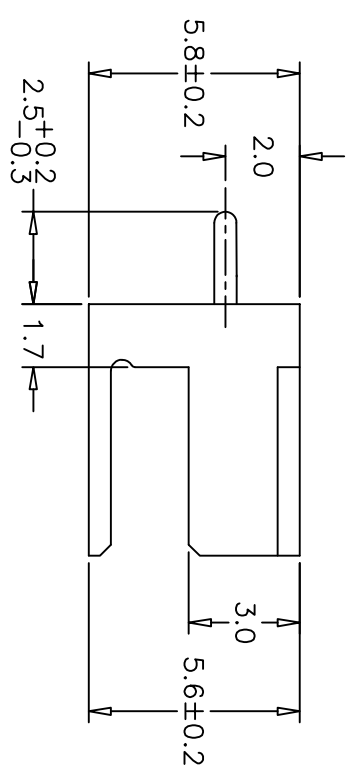
THIS DRAWING IS UNPUBLISHED.
 © COPYRIGHT - BY TYCO ELECTRONICS CORPORATION. ALL RIGHTS RESERVED.

RELEASED FOR PUBLICATION

LOC DIST
 ES 00

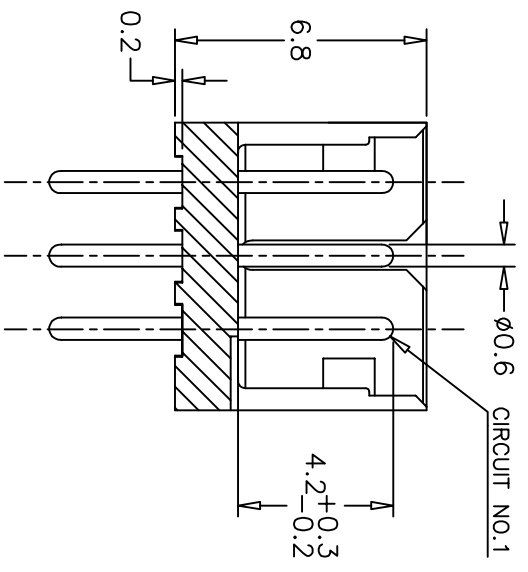
REVISIONS

P	LTR	DESCRIPTION	DATE	DMN	APVD
A1		REVISED BY ECR-13-016196	10FEB14	T.Q	W.H



PITCH
 NOT ACCUMULATED TOLERANCE

RECOMMENDABLE P.C. BOARD LAYOUT
 (PCB THK : 0.8-1.6)



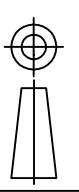
NOTES:
 1 MATERIAL : HOUSING-66 NYLON (UL94V-0)
 POST -TIN BRASS
 2 THIS PRODUCT IS SHORT TINE OF P/N 292132
 3 APPLICABLE RECEPTACLE : P/N 173977

COLOR	P/N	POS.	A	B	C	D
BLUE	2-292135-3	3	4	7.8	—	7.0
NATURAL (WHITE)	1-292135-2	12	22	25.8	—	25.0
	292135-3	3	4	7.8	—	7.0

THIS DRAWING IS A CONTROLLED DOCUMENT.

DIMENSIONS: MM
 TOLERANCES UNLESS OTHERWISE SPECIFIED:

TOLERANCES UNLESS OTHERWISE SPECIFIED:
 10>* : ±0.2
 30>* >10 : ±0.25
 100>* >30 : ±0.3
 ANGEL : ±3°



TOLERANCES UNLESS OTHERWISE SPECIFIED:
 0 PLC : ±
 1 PLC : ±
 2 PLC : ±
 3 PLC : ±
 4 PLC : ±
 ANGLES : ±

DMN S.XU 31JAN03
 CHK S.YAO 31JAN03
 APVD T.SASAKI 31JAN03
 PRODUCT SPEC 108-60016
 APPLICATION SPEC

NAME
 POST HEADER ASS'y (BOX-V TYPE) SHORT TINE
 AMP CT CONNECTOR 2mm PITCH

SIZE A3
 CAGE CODE 00779
 DRAWING NO. 292135
 WEIGHT
 CUSTOMER DRAWING

SCALE 5:1
 SHEET 1 OF 1
 REV A1