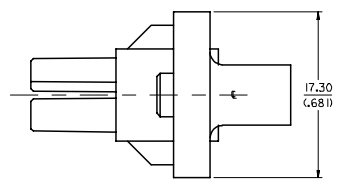
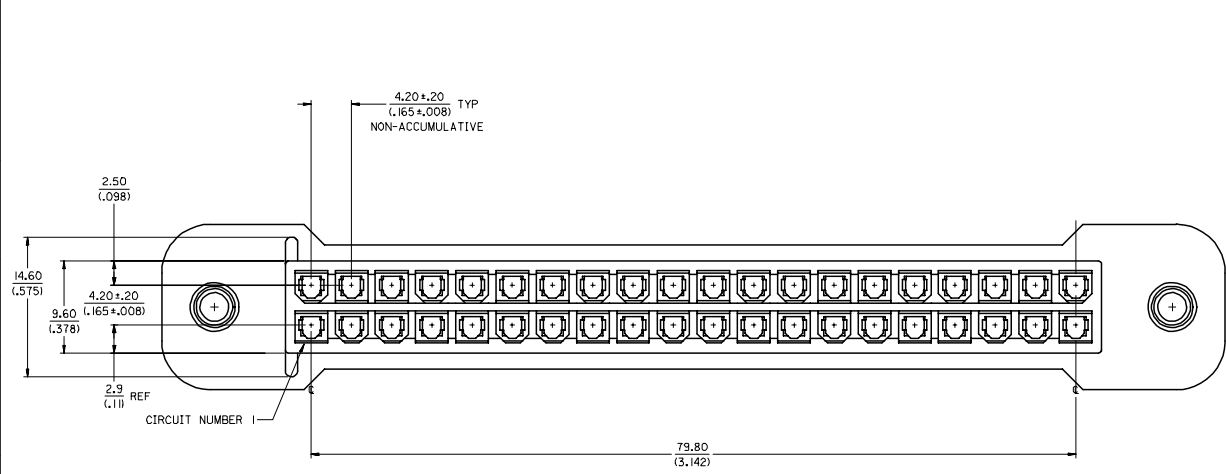


20 19 18 17 16 15 14 13 12 11 10 9 8 7 6 5 4 3 2 1



- NOTES:**
1. MATERIAL:
NYLON 46, GLASS-FILLED, UL94V-0,
COLOR - BLACK
 2. FINISH NONE
 3. PRODUCT SPECIFICATION: PS-43759-0001
 4. PART IS FOR USE WITH 5556, 44476 AND 45750 SERIES TERMINALS.
 5. THIS CONNECTOR ALLOWS FOR .050/(1.27) MAX. MISALIGNMENT IN ANY DIRECTION.
 6. A MAXIMUM TOLERANCE OF .050/(1.27) ALLOWS FOR 2 POINTS OF ELECTRICAL CONTACT. A MAXIMUM TOLERANCE OF .020/(.51) ALLOWS FOR 4 POINTS OF CONTACT.
 7. PART MATES WITH MINI-FIT B.M.I. HEADER #43973.
 8. CONNECTOR ASSEMBLIES ARE NOT TO BE MATED OR UNMATED WHILE CIRCUITS ARE LIVE.
 9. PANEL SHOULD BE PUNCHED IN THE DIRECTION OF CONNECTOR INSERTION.
 10. PART BOW SPECIFICATION MEASURED AT DATUM [-A-] = .15/(.006) PER INCH MAXIMUM. BOW DIRECTION DEFINED BY FIGURE 1.

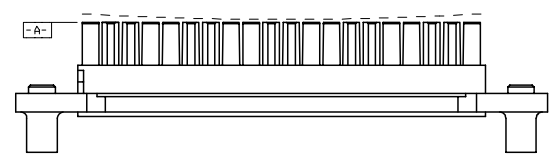
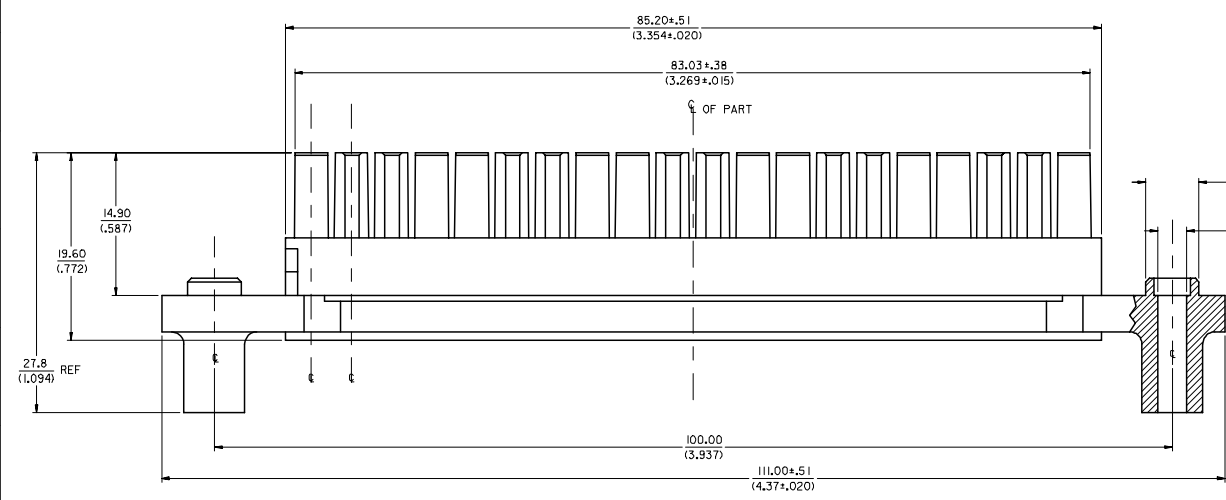
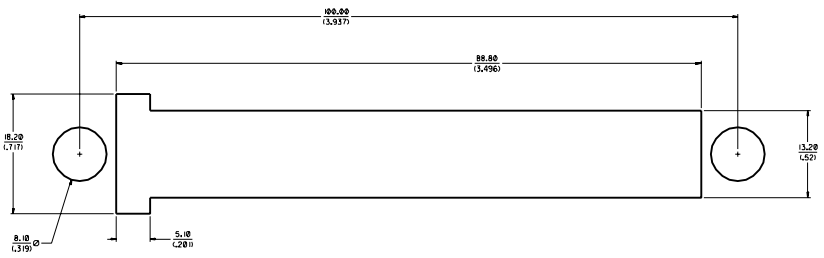


FIGURE 1

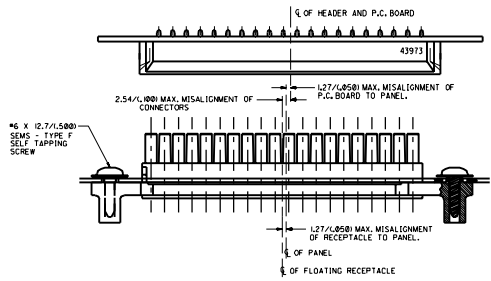
2	A
1	A4
SHEET REV	

REV NOTES 3 & 4 EC NO: UCP2006-2160 DRAWN: ADMANIL 2006/03/28 CHKD: BOPULAR 2006/03/22 APPR: JCOMERCI 2006/03/23	QUALITY SYMBOLS	GENERAL TOLERANCES (UNLESS SPECIFIED)	DIMENSION STYLE	SCALE	DESIGN UNITS	THIRD ANGLE PROJECTION																		
	$\nabla=0$ $\nabla=0$	<table border="1"> <tr> <th></th> <th>mm</th> <th>INCH</th> </tr> <tr> <td>4 PLACES</td> <td>± .15</td> <td>± .005</td> </tr> <tr> <td>3 PLACES</td> <td>± .10</td> <td>± .004</td> </tr> <tr> <td>2 PLACES</td> <td>± 0.38</td> <td>± .015</td> </tr> <tr> <td>1 PLACE</td> <td>± .50</td> <td>± .020</td> </tr> <tr> <td colspan="3">ANGULAR ± 1/2°</td> </tr> </table>		mm	INCH	4 PLACES	± .15	± .005	3 PLACES	± .10	± .004	2 PLACES	± 0.38	± .015	1 PLACE	± .50	± .020	ANGULAR ± 1/2°			MM/IN	4:1	METRIC	
		mm	INCH																					
	4 PLACES	± .15	± .005																					
3 PLACES	± .10	± .004																						
2 PLACES	± 0.38	± .015																						
1 PLACE	± .50	± .020																						
ANGULAR ± 1/2°																								
DESCRIPTION	DRAFT WHERE APPLICABLE MUST REMAIN WITHIN DIMENSIONS	<table border="1"> <tr> <td>DRAWN BY</td> <td>PEARSON</td> <td>DATE</td> <td>1998/01/14</td> </tr> <tr> <td>CHECKED BY</td> <td>MUELLER</td> <td>DATE</td> <td>1998/01/14</td> </tr> <tr> <td>APPROVED BY</td> <td>EDGLEY</td> <td>DATE</td> <td>1998/01/14</td> </tr> </table>	DRAWN BY	PEARSON	DATE	1998/01/14	CHECKED BY	MUELLER	DATE	1998/01/14	APPROVED BY	EDGLEY	DATE	1998/01/14	TITLE PANEL MOUNT RECEPTACLE 40 CKT BLIND MATE MINI-FIT SERIES									
DRAWN BY	PEARSON	DATE	1998/01/14																					
CHECKED BY	MUELLER	DATE	1998/01/14																					
APPROVED BY	EDGLEY	DATE	1998/01/14																					
REV	A4	MATERIAL NO. 439740002	DOCUMENT NO. SD-43974-002	MOLEX INCORPORATED																				
		SIZE D	THIS DRAWING CONTAINS INFORMATION THAT IS PROPRIETARY TO MOLEX INCORPORATED AND SHOULD NOT BE USED WITHOUT WRITTEN PERMISSION																					
				SHEET NO. 1 OF 2																				

19 18 17 16 15 14 13 12 11 10 9 8 7 6 5 4 3 2 1



RECOMMENDED PANEL CUT-OUT FOR 1.27/0.38/0.650±.012 THICK PANEL
(SEE NOTE 9)



ALIGNMENT TOLERANCES FOR 1.27/0.650 MAX. BOARD-TO-PANEL MISALIGNMENT
IN 1.27/0.650 RECEPTACLE FLOAT

SEE SHEET 1 FOR: DIM. CHG. APPLS.	QUALITY SYMBOLS	GENERAL TOLERANCES UNLESS SPECIFIED	SCALE	DESIGN UNITS	THIRD ANGLE PROJECTION	DIMENSIONS:			SHT	REV
	MAJOR	mm	1:1	MM	ISO	mm	INCH	FRAC	ONLY	REVISE ON CAD ONLY
CRITICAL	4 PLACES ±0.15	2.---	PEARSON	01/13/98	TITLE: PANEL-MOUNT RECEPTACLE					
	3 PLACES ±0.15	2.---	0.15	01/13/98	40-CIRCUIT BLIND MATE					
	2 PLACES ±0.38	2.---	0.38	01/13/98	MINI-FIT SERIES					
	1 PLACE ±0.38	2.---	0.38	01/13/98	MOLEX INCORPORATED					
REV	ANGULAR: 1/2°	2.---	1/2°	01/13/98	CAD FILENAME	MATERIAL NO.	DRAWING NO.	SHEET NO.		
					S4397404.DCN	439740002	SD-43974-002	2		
	DRAFT WHEN APPLICABLE MUST REMAIN WITHIN DIMENSIONS									
	THIS DRAWING CONTAINS INFORMATION THAT IS PROPRIETARY TO MOLEX INCORPORATED AND SHOULD NOT BE USED WITHOUT WRITTEN PERMISSION.									