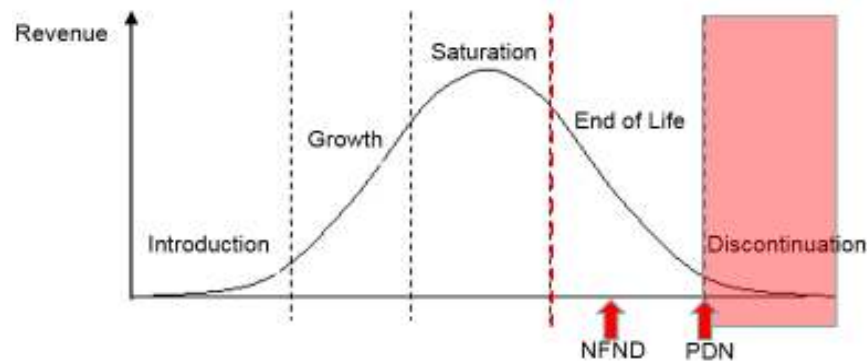


Light is OSRAM

Product Discontinuation (acc. JEDEC J-STD-048) OS-PD-2018-074

01-Oct-2018

Last order:	30-Sept-2019
Last delivery:	31-Mar-2020
Reason:	Introduction of next chip generation into LT PWSG with adjusted voltage range.



Please direct your feedback to your local Sales office.

DISCONTINUED				NEW (REPLACEMENT)			
Device	Ordering Code	Function	Brand	Device	Datasheet Ordering Code	Function	Brand
LT PWSG-AABB-36-46-20-R18-Z	Q65111A9178	LED	PointLED	LT PWSG-BACA-36-N626-20-S	Q65112A7313	LED	PointLED
LT PWSG-AABB-36-46-20-R18F-Z	Q65111A9370	LED	PointLED	LT PWSG-BACA-36-N626-20-S	Q65112A7313	LED	PointLED
LT PWSG-ABBB-36-45-20-R18-XX	Q65112A1859	LED	PointLED	LT PWSG-BACA-36-N626-20-S	Q65112A7313	LED	PointLED

Products Affected by Product Discontinuation Notification

Number: OS-PD-2018-074

Name: Product Discontinuation due to Introduction of next chip generation into LT PWSG with adjusted voltage range

Release Date: 10/1/2018

Last Order: 9/30/2019

Last Delivery: 3/31/2020

DISCONTINUED

NEW (REPLACEMENT)

<i>Product</i>	<i>QNumber</i>	<i>QNumber Description</i>	<i>Part Number</i>	<i>Product</i>	<i>QNumber</i>	<i>QNumber Description</i>	<i>Part Number</i>
LT PWSG	Q65111A9178	LT PWSG-AABB-36-46-20-R18-Z	LT PWSG-AABB-36-46	LT PWSG	Q65112A7313	LT PWSG-BACA-36-N626-20-S	
LT PWSG	Q65111A9370	LT PWSG-AABB-36-46-20-R18F-Z	LT PWSG-AABB-36-46-F	LT PWSG	Q65112A7313	LT PWSG-BACA-36-N626-20-S	
LT PWSG	Q65112A1859	LT PWSG-ABBB-36-45-20-R18-XX	LT PWSG-ABBB-36-45-XX	LT PWSG	Q65112A7313	LT PWSG-BACA-36-N626-20-S	