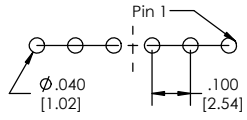
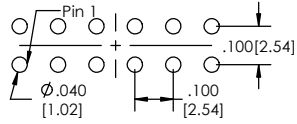


Recommend P.C. Board Layout
SCALE 4:1

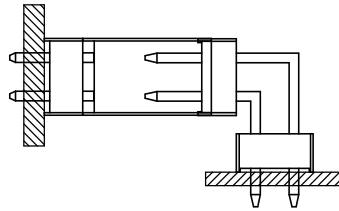


SINGLE ROW

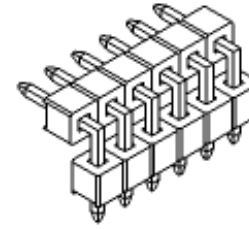


DOUBLE ROW

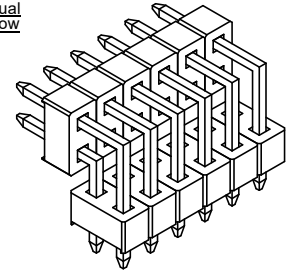
APPLICATION



Single Row



Dual Row



BSTCR-1 XX - X - XXX - XX - XXX - XX - XXX - XX - XXX - XX - XXX - LF
(A) (B) (C) (D) (E) (F) (G) (H) (I) (J)

- A. Pins Per Row - 1 through 40
- B. Row Specification - S= Single Row, D= Double Row
- C. Desired Tail Length - Please specify tail length, e.g. .137[3.50]= 137
- D. Pin Options - See Pin Options below
- E. Desired Post Height - Please Specify - If Post is not specified the Post(P) = Overall Length(L) - Board Space(B) - Tail(T) - .140[3.56]
- F. Plating Options - See Plating Options below
- G. Desired Board Space - Please Specify required space, e.g. .100[2.54]= 100, .200[5.33] Min.
- H. Lock Tight "LT" (Optional) - Leave blank if not needed, -LT= With
- I. Polarized Position - Leave blank if not needed - If required, specify empty pin position, e.g. 012 for Pin 12
- J. Lead Free

Mates with:
BCSS,
BSSH,
BSSH.C,
BSSQ,
BSSQ.C,
BSSQ.M,
LBSS,
LSMBC,
LSWSS,
SMBC,
SSHQ,
SSHQ.R,
SSHR,
SSHS,
SSHS.M.

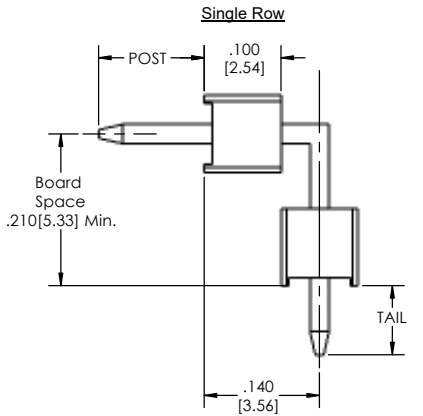
| Plating options | |
|-----------------|---|
| G | -10µ Gold on Contact Area/ Flash on Tail |
| T | -Matte Tin all Over |
| GT | -10µ Gold on Contact Area/ Matte Tin on Tail |
| H | -30µ Gold on Contact Area/ Matte Tin on Tail |
| F | -Gold Flash over Entire Pin |
| FT | - Gold Flash on Contact Area/ Matte Tin on Tail |

| Pin Options | |
|----------------|------------|
| Overall Length | |
| .630 | 16.00mm 16 |
| .730 | 18.54mm 20 |
| .830 | 21.08mm 22 |
| .930 | 23.62mm 24 |
| 1.030 | 26.16mm 26 |
| 1.130 | 28.70mm 28 |
| 1.230 | 31.24mm 30 |
| 1.330 | 33.78mm 32 |
| 1.430 | 36.32mm 34 |
| 1.530 | 38.86mm 36 |

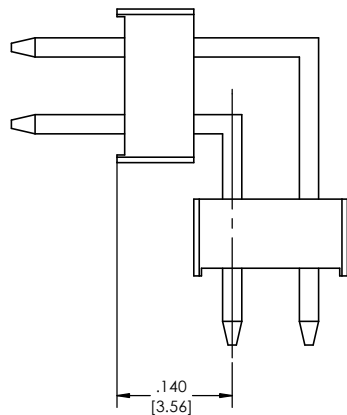
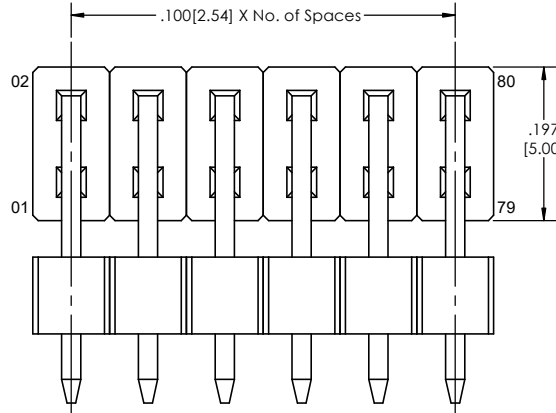
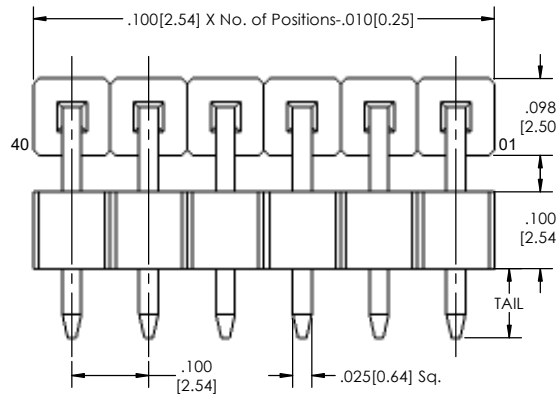
Specifications:
Current Rating: 3.0 Ampere
Insulation Resistance: 1000M Ohms Min.
Dielectric Withstanding: 600V AC
Contact Resistance: 20M Ohms Max.
Operation Temperature: -40°C to +105°C
Max. Process Temperature
Peak: 260°C up to 20 secs.
Process: 230°C up to 60 secs.
Wave: 260°C up to 6 secs.
Manual Solder: 350°C up to 5 secs.

Materials:
Contact Material: Phosphor Bronze
Insulator Material: Nylon 6T
Plating: Au or Sn over 50µ" (1.27) Ni

Tails may be clipped to achieve specific dimensions.
Products cut to specific sizes are uncancelable/ nonreturnable.
Parts are subject to change without notice.



Double Row



PROPRIETARY AND CONFIDENTIAL
THE INFORMATION CONTAINED IN THIS DRAWING IS THE SOLE PROPERTY OF Major League Electronics. ANY REPRODUCTION IN PART OR AS A WHOLE WITHOUT THE WRITTEN PERMISSION OF Major League Electronics IS PROHIBITED.

| | | | | | |
|-----------------------------|--|-------------------------------|------|--------------------------|----------|
| UNLESS OTHERWISE SPECIFIED: | | NAME | DATE | | |
| DIMENSIONS ARE IN INCHES | | DRAWN | EW | | 09/15/15 |
| TOLERANCES ARE: | | CHECKED | GWE | | 09/15/15 |
| ONE DECIMALS ±.100 | | ENG APPR. | | | |
| TWO DECIMAL ±.010 | | MFG APPR. | | | |
| THREE DECIMAL ±.005 | | ADDRESS: | | 2533 Centennial Blvd. | |
| FOUR DECIMAL ±.002 | | MATERIAL: | | Jeffersonville, IN 47130 | |
| NEXT ASSY USED ON | | FINISH: | | Phone: 812-670-4174 | |
| APPLICATION | | DO NOT SCALE DRAWING | | Fax: 812-670-4175 | |
| | | E-Mail: mle@mlelectronics.com | | TITLE: BSTCR-1 SERIES | |
| | | | | SIZE DWG. NO. C | |
| | | | | REV E | |
| | | | | SCALE 8:1 | |
| | | | | SHEET 1 OF 1 | |